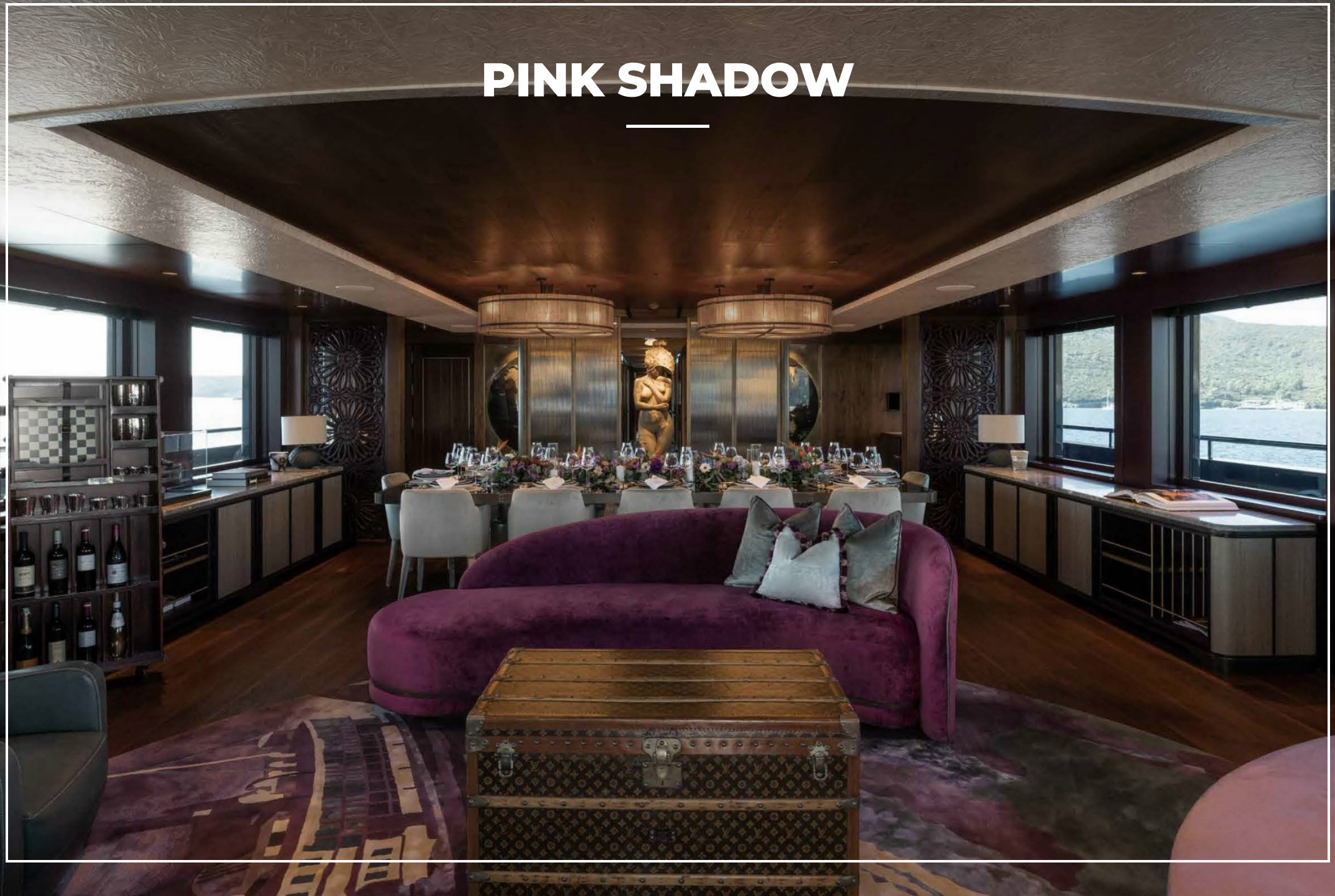


# PINK SHADOW



PINK SHADOW

# OVERVIEW.

**Designed to explore off beaten track for extended periods, PINK SHADOW gives you an unparalleled opportunity to cruise like never before. Her bold purposeful exterior design and her ice-class hull belie an interior transports you away to a bygone golden era of adventurers.**

PINK SHADOW has a collection of boutique lounges and deck areas. The sundeck hosts the exquisite Amazonas bar and lounge, complete with a formidable large stainless-steel crocodile sculpture. Ahead of this lovely lounge, you can enjoy time on the bridge for an exclusive on board perspective. On the aft deck, there is bench seating around a long dining table, ideal for social breakfasts or long BBQ lunches. A few steps aft lead you to the raised jacuzzi and sunpad area to the rear. Above is the private crow's nest observation platform.

The upper deck has two relaxing lounges to choose from. Aft, is the sumptuous Fitzcarraldo Lounge, plush velvet sofa and armchair seating lead to the fabulous formal dining area. Here, 12 guests can dine in style and luxury before stepping out to an al fresco bar area, the helipad, and vast aft deck space. From the Fitzcarraldo Lounge, you can stroll forward to the Habana Lounge (a cigar lounge with a games table and a humidor). The forward bow terrace is accessed from here, and you can sit and look ahead to your destination or simply take in your surroundings.

On the main deck is the Tahiti Plage. A welcoming beach bar setting with a jacuzzi infinity pool, bar, and lounge area. Vast fold-down sea terraces expand this informal lounge area creating the very best place on board to enjoy cocktails or relax with unrivalled panoramic views from either side of the central bar.

The Tahiti Plage is a convivial space that leads to the six fabulous guest suites (three doubles suites, three twin/double convertible suites) all have a different theme and feel, so all of your guests' needs will be catered for. Ahead is the full-beam master suite featuring rich furnishing for a warm cosy feel. As well as a private lounge and en suite bathroom, the space has an enclosed day bed.

When you're not exploring the various areas on board PINK SHADOW, there are plenty of toys to entertain you and your guests for days on end. Sea-Doos, SeaBobs, a Fliteboard and an e-surf board complement a huge collection of towable inflatables, boards and skis.

## Key features

---

**Wheelchair friendly**

---

**Beach club at sea level**

---

**Helipad**

---

**Two Rupert Marine RIB chase tenders of 9.2m and 9m**

---

**Elevator serving all decks**

---

**Jacuzzi on the sun deck and on the main deck aft**

---

**Zero speed stabilisers to reduce any rolling motion while at anchor**

---

PINK SHADOW

# SPECIFICATION.



Length  
**58.3m (191.2ft)**



Built  
**2023, Damen, The Netherlands**



Interior designer  
**Design Unlimited**



Beam  
**11m (36.1ft)**



Draft  
**3.6m (11.8ft)**



Gross tonnage  
**1,091**



Cruising speed  
**13 knots**



Maximum speed  
**16 knots**



Fuel consumption at cruising speed  
**315 litres per hour**



Engines  
**2 x 2,029hp MTU**



Guests  
**12**



No. of guest cabins  
**6 (3 x double, 3 x double/twin)**



Crew  
**15**

[View yacht on website](#)

[Watch yacht video](#)

PINK SHADOW

# TENDERS & TOYS



2 × Tenders



2 × Deck jacuzzis



2 × Waverunners



4 × SeaBobs



2 × eFoil



1 × Jetsurf



3 × Kayaks



Surfboard



Wakeboard



Waterskis



Anti-jellyfish pool



Aquapark



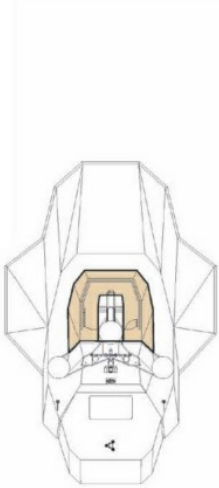
Waterslide



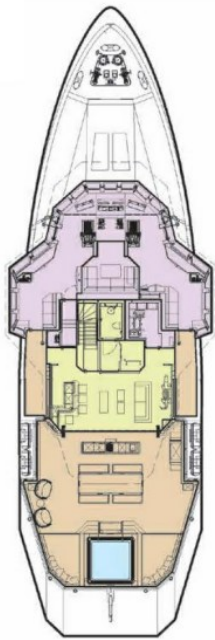
Inflatable tows

# YACHT LAYOUT

OBSERVATION PLATFORM



SUN DECK



UPPER DECK



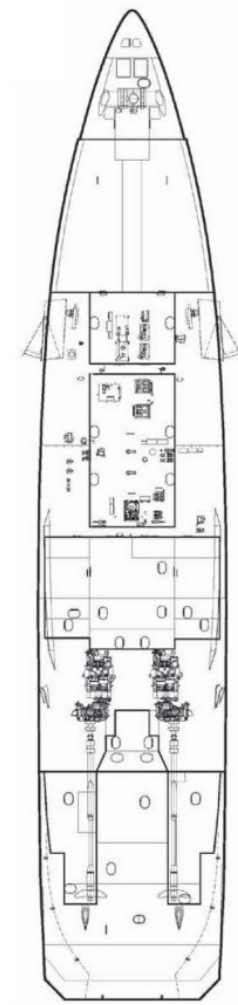
MAIN DECK



LOWER DECK



TANK DECK



## KEY

- Deck
- Guest Areas
- Master Cabin
- Guest Cabins
- Sun Deck
- Crew Areas

# BURGESS

# WORLD CLASS. WORLD WIDE.

|                                   |                                   |                                    |                                 |                                   |   |                                      |   |
|-----------------------------------|-----------------------------------|------------------------------------|---------------------------------|-----------------------------------|---|--------------------------------------|---|
| <b>London</b><br>+44 20 7766 4300 | <b>Monaco</b><br>+377 97 97 81 21 | <b>New York</b><br>+1 212 223 0410 | <b>Miami</b><br>+1 305 672 0150 | <b>Singapore</b><br>+65 9665 8990 | <b>Beverly Hills</b><br>+1 310 424 5112 | <b>Palma</b><br>+34 971 495 413      | <b>Athens</b><br>+30 210 967 1661         |
| <b>Dubai</b><br>+971 4 425 5874   | <b>Phuket</b><br>+66 7623 9739    | <b>Hong Kong</b><br>+852 6496 2094 | <b>Tokyo</b><br>+81 46 738 8612 | <b>Sydney</b><br>+61 499 945 557  | <b>Mumbai</b><br>+91 98211 67253        | <b>Shanghai</b><br>+86 187 0898 6800 | <b>Rio de Janeiro</b><br>+55 21 2553-3238 |
| <b>Aspen</b><br>+1 970 710 2294   |                                   |                                    |                                 |                                   |   |                                      |   |

Advertising of these vessel(s) in printed publications, on the internet or in any other medium is not permitted without prior written permission from Burgess. All particulars are given in good faith and are believed correct but they cannot be guaranteed.

Last updated: 13 February 2025