

PERLE BLEUE



PERLE BLEUE

SPECIFICATION.



Asking price
EUR 10,500,000



Built
2007 (refitted 2013), Royal Hakvoort Shipyard,
The Netherlands



Length
38m (124.7ft)



Beam
8.2m (27ft)



Draft
2.4m (7.9ft)



Gross tonnage
349



Cruising speed
10 knots



Maximum speed
13 knots



Range
3,500 nm



Flag
Marshall Islands



Lying
West Mediterranean



Class
Lloyds 100A1 SSC G6 Yacht + LMC UMS



Exterior designer
Diana Yacht Design B.V.



Interior designer
Donald Starkey



Construction
Hull - Steel, Superstructure - Aluminium, Deck -
Teak



Crew
7



Guests
12



Cabins
5 (3 x double, 2 x double/twin, 2 x additional
berths)



Engines
2 x 650hp Caterpillar



Propulsion
Twin screw diesel yacht

[View yacht on website](#)

[Watch yacht video](#)



PERLE BLEUE

Main deck lounge



Master office



Master cabin



Master bathroom en suite



PERLE BLEUE

Double cabin



Double cabin



Convertible cabin



Sky lounge



PERLE BLEUE

Sun deck



Sun deck teppanyaki bar



Bridge deck aft seating area



Main deck aft dining area



PERLE BLEUE

Aerial



Watertoys



BURGESS

Discover the difference.
burgessyachts.com



OVERVIEW.

The 38m (124.7ft) custom yacht PERLE BLEUE has a steel hull and aluminium superstructure built to Lloyd's classification and MCA compliance by celebrated Dutch shipyard Royal Hakvoort and delivered in 2007. With exteriors by Diana Yacht Design and 349GT of Donald Starkey interiors, she won Best Displacement Yacht under 50m at the 2008 Showboats awards.

Following a 2013 refit, PERLE BLEUE was also a finalist in the 2014 World Superyacht Awards in the Best Refitted/Rebuilt Yacht category. Works saw the addition of a fifth guest cabin, a 10-seat sit-up wet bar with Teppanyaki grill on the sun deck and an al fresco bridge deck lounge.

A spacious sun deck features a jacuzzi and huge lounging areas, plenty of sunpads and a forward observation sofa, as well as the 10-guests bar and a dayhead.

The bridge deck has open-air dining for 12 guests and a buffet bar beneath the overhang, as well as a large sun lounge aft. Walkaround sidedecks helps guests appreciate their surroundings and lead forward to a Portuguese bridge lounge, which also serves as an informal dining area and cocktail lounge.

There is another 12-guest al fresco dining option with twin buffet bars on the main deck aft. Sidedecks lead to steps up to the Portuguese bridge lounge and to starboard aft there is access to the swim platform and tender garage.

The main saloon has a feature artworks on the forward bulkhead and large picture windows, with sofas and armchairs in a lounge aft. There are two card tables forward in a space that could serve as a formal dining area, alongside an Clavinova electric keyboard. Stairs lead up to the sky lounge, down to the guest accommodation and there is a dayhead off the lobby.

Huge windows in the sky lounge fill the space with natural light. A mix of sofa and armchair seating aft serves as a lounge, there is a card table, dayhead and a very large TV on the forward bulkhead turns the space into a media lounge.

PERLE BLEUE welcomes up to 12 guests in five spacious cabins, all en suite. The full-beam, main deck owner's suite has a private study, walk-in wardrobe and an en suite with bath and shower room. The four remaining guest suites, on the lower deck, comprise two double cabins and two convertible cabins, each with pullman berths.

Twin 650hp Caterpillar diesel engines give her a top speed of 13 knots and a range of 3,500nm at her cruising speed of 10 knots. Zero speed stabilisers ensure comfort on arrival. As a popular charter yacht with Burgess, she has been relentlessly maintained and upgraded, and comes with a wide selection of watertoys.

Key features

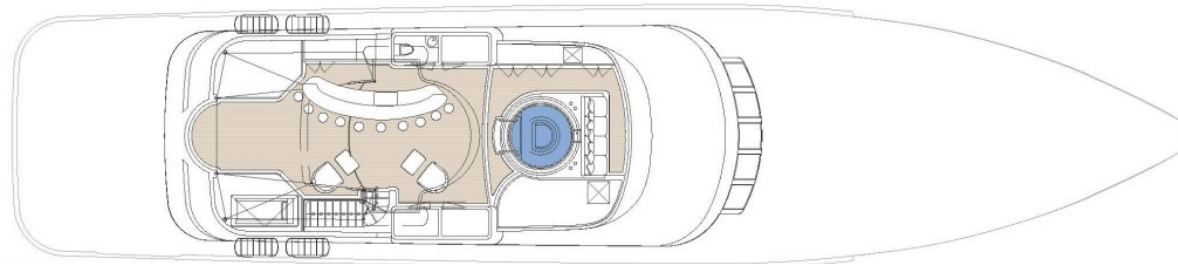
Northern European custom-built yacht that has been meticulously maintained

Accommodation for up to 12 guests in five cabins

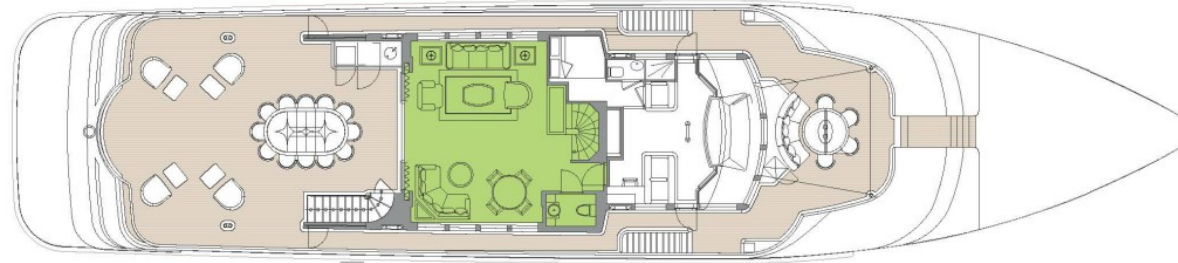
Tender garage

Proven successful charter platform

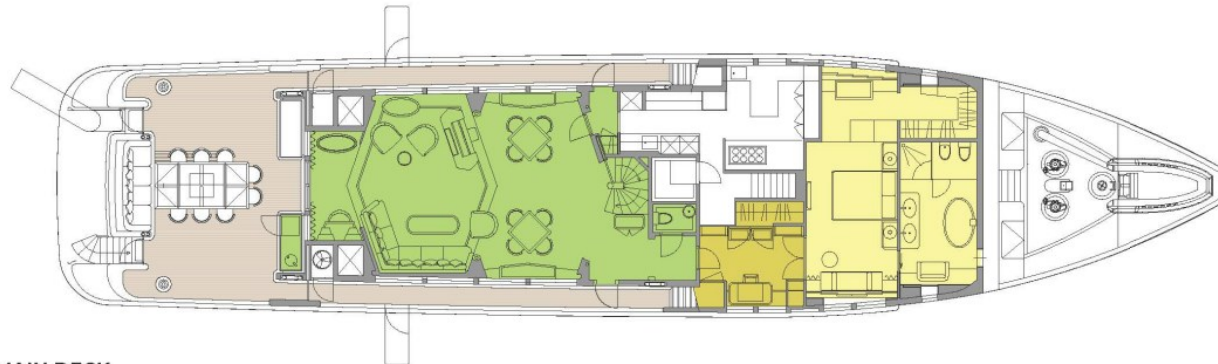
Winner of the "Best Displacement Yacht Under 50m" at the Showboats Awards



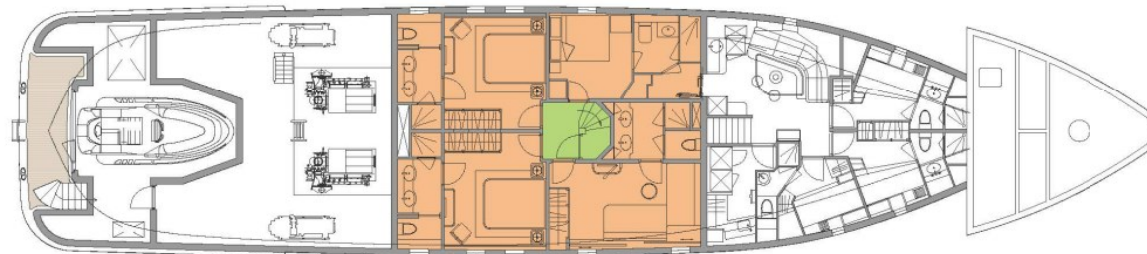
SUN DECK



BRIDGE DECK



MAIN DECK



LOWER DECK

■ GUEST AREAS ■ MASTER SUITE ■ GUEST CABINS ■ MASTER SUITE OFFICE ■ JACUZZI

BURGESS

WORLD CLASS.
WORLD WIDE.

London +44 20 7766 4300	Monaco +377 97 97 81 21	New York +1 212 223 0410	Miami +1 305 672 0150	Singapore +65 9665 8990	Beverly Hills +1 310 424 5112	Palma +34 971 495 413	Athens +30 210 967 1661
Dubai +971 4 425 5874	Phuket +66 7623 9739	Hong Kong +852 6496 2094	Tokyo +81 46 738 8612	Sydney +61 499 945 557	Mumbai +91 98211 67253	Shanghai +86 187 0898 6800	

Advertising of these vessel(s) in printed publications, on the internet or in any other medium is not permitted without prior written permission from Burgess. All particulars are given in good faith and are believed correct but they cannot be guaranteed.

Last updated: 23 April 2024