





















PELORUS



PELORUS

SPÉCIFICATIONS.

	Prix demandé EUR 185 000 000		Designer extérieur Tim Heywood
	Chantier 2003 (refitted 2017), Lurssen-Werft, Germany		Designer d'intérieur Terence Disdale
	Longueur 115m		Construction Hull - Steel, Superstructure - Steel
	Largeur 18,3m		Équipage 46
	Tirant d'eau 4,7m		Invités 24
	Tonnage brut 5 403		Cabines 12 (9 × double, 3 × double/twin)
	Vitesse de croisière 18 knots		Moteurs 2 × 5 300hp Wartsila
	Vitesse maximale 20 knots		Propulsion Twin screw diesel yacht
	Autonomie 6 000 nm	Note Not available for sale to US residents while in US waters. Voir le yacht sur le site Regarder la vidéo du yacht	
	Pavillon Cayman Islands		
	Position Europe		
	Classe DNV-GL Lloyd's Register		



PELORUS

PELORUS



PELORUS



Main salon



Main salon



PELORUS

Dining area



Dining area



Stairwell



Staircase



PELORUS

Owner's cabin



Owner's cabin



Owner's cabin en suite



Owner's study



PELORUS

Owner's study



Owner's study



Owner's study



VIP cabin



PELORUS

VIP suite



Guest cabin en suite



Double cabin



Double cabin



BURGESS

Discover the difference.
burgessyachts.com



PELORUS

Double cabin



Guest cabin en suite



Double cabin



Double cabin



BURGESS

Discover the difference.
burgessyachts.com



PELORUS

Double cabin



Double twin cabin



Double twin cabin



Double twin cabin



BURGESS

Discover the difference.
burgessyachts.com



PELORUS

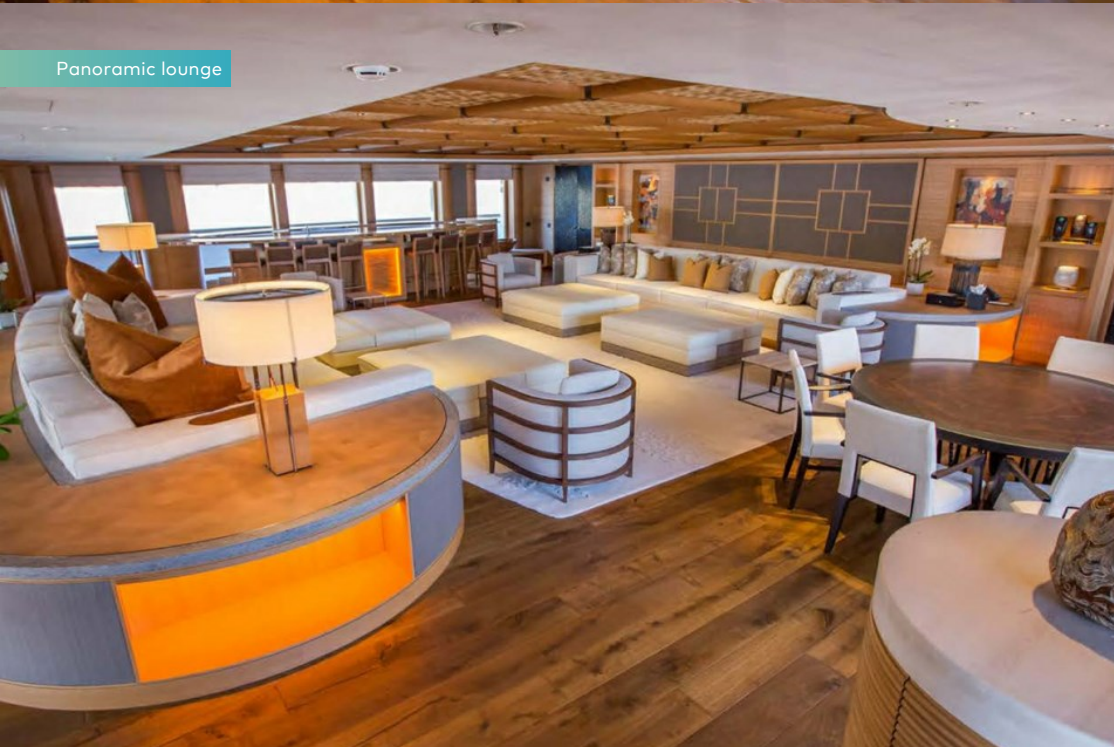
Double cabin



Guest cabin en suite



Panoramic lounge



Panoramic lounge



BURGESS

Discover the difference.
burgessyachts.com



PELORUS

Panoramic lounge - dance floor



Cinema



Beauty salon



Massage room



PELORUS

Spa



Steam room



Gym



Bridge



BURGESS

Discover the difference.
burgessyachts.com



PELORUS

Upper deck aft



Upper deck aft



Aerial view



Aerial view



BURGESS

Discover the difference.
burgessyachts.com



PELORUS

PELORUS



Limo tender



BURGESS

Discover the difference.
burgessyachts.com



PELORUS

APERÇU.

The iconic PELORUS is an apex superyacht of unquestionable pedigree. She is a 115m (377.3ft) motor yacht of 5,403GT, with a steel hull and aluminium superstructure custom-built to DNV-GL classification and delivered by Lurssen in 2003. She was designed by two of the world's most celebrated yacht designers with sweeping exterior styling by Tim Heywood and beachside villa interiors by Terence Disdale. Since her delivery, she has had two significant refits the first at Blohm+Voss in 2008, when her second helipad was added, and the second at Kusch Yachts in 2017 during her 15-year survey.

Exterior features include a sun deck with a large pool with counter-current jets and a jacuzzi, bar and open-air dining. There are no fewer than five balconies and sea terraces across main and lower decks, two of which serve the dining room and main saloon and another spectacularly opens up a lower deck guest cabin. There are helipads on the foredeck and forward on the owner's deck where a companionway leads to a private terrace.

An elevator serves all guest decks from the lower to sun deck for multi-generational access. The upper deck is designed for entertainment. A huge alfresco space aft has open-air dining and lounges beneath the overhang and plenty of versatile deck space aft, as well as walkaround side decks for promenading.

Inside is a panoramic sky lounge with a huge bar and generous lounge and huge screen. The space has nightclub lighting and sound systems and rug rolls away to reveal an illuminated dancefloor. Forward is a tiered cinema with world-class audio visual system.

The lower deck aft is devoted to wellness. There is a large, fully equipped gym with its own sea terrace, massage room, treatment room, hair salon, steam room, plunge pool, hydrotherapy spa and relaxation room.

As well as a private terraces forward and aft, the dedicated owner's deck has a bedroom suite with 200-degree views, a huge bathroom and dressing room, as well as a vast lounge and study aft and a butler's cabin. There are VIP and guest suites on the upper deck, two guest suites on the main deck and a further three guest suites complete accommodation for 24 guests in 12 cabins. She also sleeps up to 46 crew including seven engineers to ensure reliability and five personal staff for seven-star service.

Her custom tenders, including 11.2m (36.7ft) limo and 8.5m (27.9ft) sport, both by Vikal, are stowed on the main deck aft and launched on horizontal davits through shell doors. She also has storage for her additional tenders, as well as a huge selection of toys and scuba diving equipment. Twin 5,300hp Wartsila diesel engines give her a top speed of 20 knots, she cruises comfortably at 18 knots and has a transoceanic maximum range of 6,000nm at her passage speed of 16 knots. Two sets of Quantum zero speed stabilisers ensure comfort on arrival.

Principales caractéristiques

Iconic pedigree yacht delivered by Northern-European shipyard Lurssen

Elegant exterior design by Tim Heywood

Beautiful interior design by Terence Disdale

Flexible accommodation for 24 guests, 10 staff and 46 crew members

Fantastic storage capacity for large tenders and toys

Two helipads

Elevator

Large swimming pool and jacuzzi on sun deck

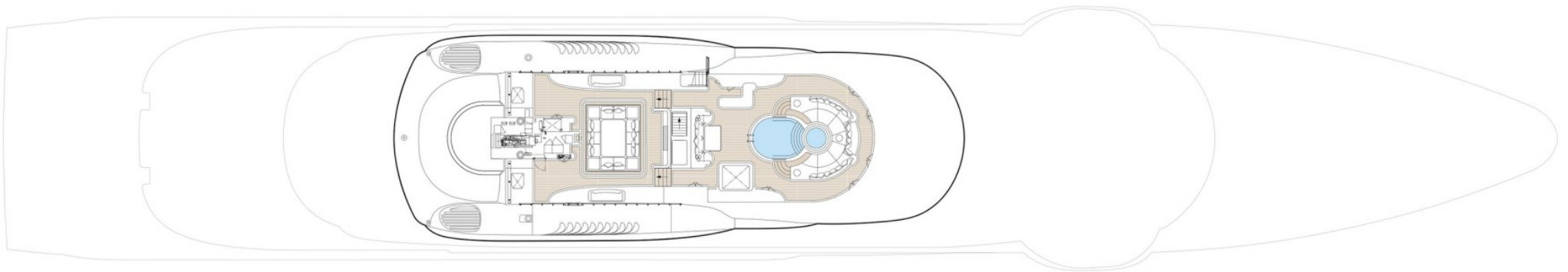
Large wellness area with sea terrace, including gym, massage room, spa and plunge pool

Range of 6,000 nm at cruising speed

Annexes

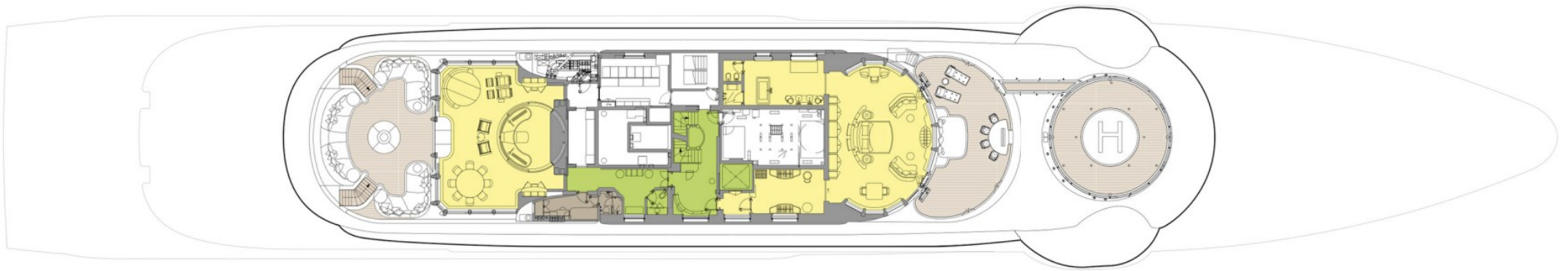
11.2m Vikal limo tender, 8.5m Vikal sports tender, 10m RIB X-tender, 9m Hinkley, 6.2m Pascoe work boat, 6.5 Pascoe work boat & 3.6m Zodiac RIB

SUN DECK



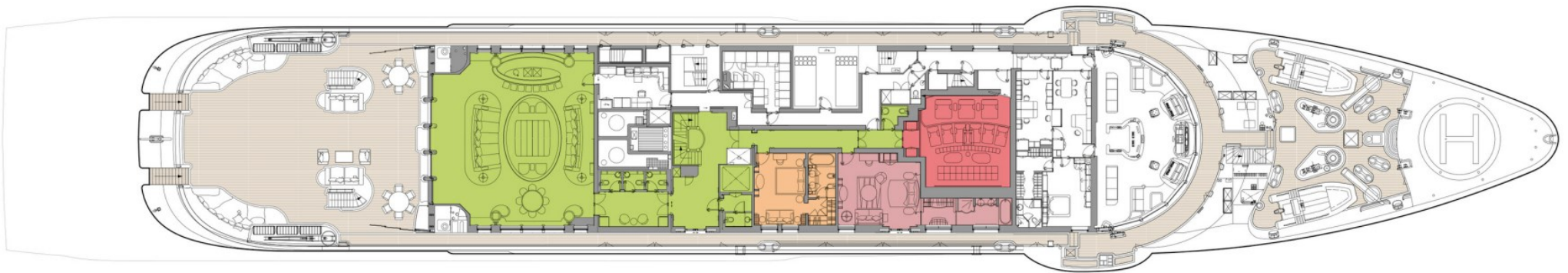
■ GUEST AREAS ■ MASTER SUITE ■ VIP SUITE ■ GUEST CABINS ■ CINEMA ■ GYM ■ MASSAGE SUITE ■ BEAUTY SALON ■ SPA ■ HAMMAM ■ POOL ■ STAFF CABINS ■ BUTLER'S CABIN

TOP DECK



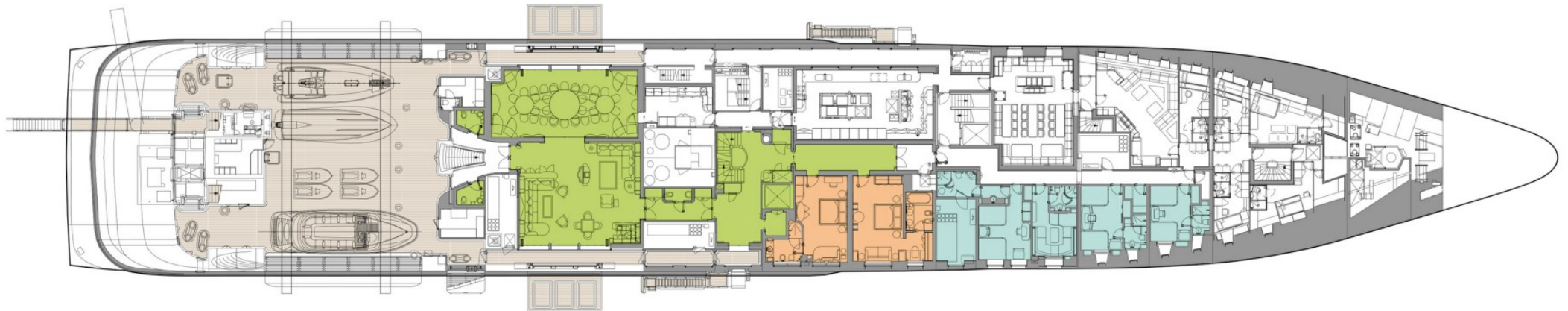
 GUEST AREAS  MASTER SUITE  VIP SUITE  GUEST CABINS  CINEMA  GYM  MASSAGE SUITE  BEAUTY SALON  SPA  HAMMAM  POOL  STAFF CABINS  BUTLER'S CABIN

UPPER DECK



■ GUEST AREAS ■ MASTER SUITE ■ VIP SUITE ■ GUEST CABINS ■ CINEMA ■ GYM ■ MASSAGE SUITE ■ BEAUTY SALON ■ SPA ■ HAMMAM ■ POOL ■ STAFF CABINS ■ BUTLER'S CABIN

MAIN DECK



GUEST AREAS MASTER SUITE VIP SUITE GUEST CABINS CINEMA GYM MASSAGE SUITE BEAUTY SALON SPA HAMMAM POOL STAFF CABINS BUTLER'S CABIN

LOWER DECK



GUEST AREAS MASTER SUITE VIP SUITE GUEST CABINS CINEMA GYM MASSAGE SUITE BEAUTY SALON SPA HAMMAM POOL STAFF CABINS BUTLER'S CABIN

BOTTOM DECK



GUEST AREAS MASTER SUITE VIP SUITE GUEST CABINS CINEMA GYM MASSAGE SUITE BEAUTY SALON SPA HAMMAM POOL STAFF CABINS BUTLER'S CABIN

BURGESS

WORLD CLASS. WORLD WIDE.

London	Monaco	New York	Miami	Singapore	Beverly Hills	Palma	Athens
+44 20 7766 4300	+377 97 97 81 21	+1 212 223 0410	+1 305 672 0150	+65 9665 8990	+1 310 424 5112	+34 971 495 413	+30 210 967 1661
Dubai	Phuket	Hong Kong	Tokyo	Sydney	Mumbai	Shanghai	
+971 4 425 5874	+66 7623 9739	+852 6496 2094	+81 46 738 8612	+61 499 945 557	+91 98211 67253	+86 187 0898 6800	

La publicité de ce(s) navire(s) dans des publications imprimées, sur Internet ou sur tout autre support n'est pas autorisée sans l'autorisation écrite préalable de Burgess.
Toutes les informations sont données de bonne foi et sont considérées comme exactes, mais elles ne peuvent être garanties.

Dernière mise à jour : 16 avril 2024