





















PELORUS



PELORUS

SPECIFICATION.

 Asking price EUR 185,000,000	 Exterior designer Tim Heywood
 Built 2003 (refitted 2017), Lurssen-Werft, Germany	 Interior designer Terence Disdale
 Length 115m (377.3ft)	 Construction Hull - Steel, Superstructure - Steel
 Beam 18.3m (60ft)	 Crew 46
 Draft 4.7m (15.4ft)	 Guests 24
 Gross tonnage 5,403	 Cabins 12 (9 × double, 3 × double/twin)
 Cruising speed 18 knots	 Engines 2 × 5,300hp Wartsila
 Maximum speed 20 knots	 Propulsion Twin screw diesel yacht
 Range 6,000 nm	
 Flag Cayman Islands	
 Lying Europe	
 Class DNV-GL Lloyd's Register	

Note

Not available for sale to US residents while in US waters.

[View yacht on website](#)

[Watch yacht video](#)



BURGESS

Discover the difference.
burgessyachts.com



PELORUS

PELORUS



PELORUS



Main salon



Main salon



PELORUS

Dining area



Dining area



Stairwell



Staircase



PELORUS

Owner's cabin



Owner's cabin



Owner's cabin en suite



Owner's study



PELORUS

Owner's study



Owner's study



Owner's study



VIP cabin



BURGESS

Discover the difference.
burgessyachts.com



PELORUS

VIP suite



Guest cabin en suite



Double cabin



Double cabin



BURGESS

Discover the difference.
burgessyachts.com



PELORUS

Double cabin



Guest cabin en suite



Double cabin



Double cabin



BURGESS

Discover the difference.
burgessyachts.com



PELORUS

Double cabin



Double twin cabin



Double twin cabin



Double twin cabin



BURGESS

Discover the difference.
burgessyachts.com



PELORUS

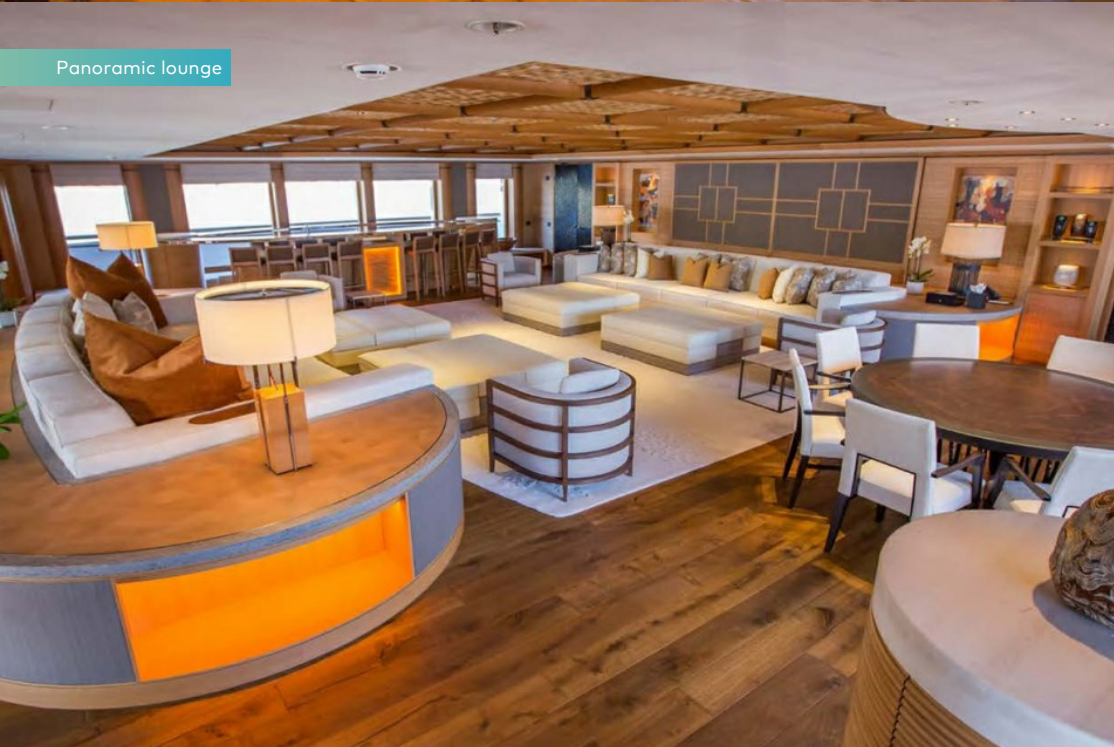
Double cabin



Guest cabin en suite



Panoramic lounge



Panoramic lounge



PELORUS

Panoramic lounge - dance floor



Cinema



Beauty salon



Massage room



PELORUS

Spa



Steam room



Gym



Bridge



BURGESS

Discover the difference.
burgessyachts.com



PELORUS

Upper deck aft



Upper deck aft



Aerial view



Aerial view



BURGESS

Discover the difference.
burgessyachts.com



PELORUS

PELORUS



Limo tender



BURGESS

Discover the difference.
burgessyachts.com



OVERVIEW.

The iconic PELORUS is an apex superyacht of unquestionable pedigree. She is a 115m (377.3ft) motor yacht of 5,403GT, with a steel hull and aluminium superstructure custom-built to DNV-GL classification and delivered by Lurssen in 2003. She was designed by two of the world's most celebrated yacht designers with sweeping exterior styling by Tim Heywood and beachside villa interiors by Terence Disdale. Since her delivery, she has had two significant refits the first at Blohm+Voss in 2008, when her second helipad was added, and the second at Kusch Yachts in 2017 during her 15-year survey.

Exterior features include a sun deck with a large pool with counter-current jets and a jacuzzi, bar and open-air dining. There are no fewer than five balconies and sea terraces across main and lower decks, two of which serve the dining room and main saloon and another spectacularly opens up a lower deck guest cabin. There are helipads on the foredeck and forward on the owner's deck where a companionway leads to a private terrace.

An elevator serves all guest decks from the lower to sun deck for multi-generational access. The upper deck is designed for entertainment. A huge alfresco space aft has open-air dining and lounges beneath the overhang and plenty of versatile deck space aft, as well as walkaround sidedecks for promenading.

Inside is a panoramic sky lounge with a huge bar and generous lounge and huge screen. The space has nightclub lighting and sound systems and rug rolls away to reveal an illuminated dancefloor. Forward is a tiered cinema with world-class audio visual system.

The lower deck aft is devoted to wellness. There is a large, fully equipped gym with its own sea terrace, massage room, treatment room, hair salon, steam room, plunge pool, hydrotherapy spa and relaxation room.

As well as a private terraces forward and aft, the dedicated owner's deck has a bedroom suite with 200-degree views, a huge bathroom and dressing room, as well as a vast lounge and study aft and a butler's cabin. There are VIP and guest suites on the upper deck, two guest suites on the main deck and a further three guest suites complete accommodation for 24 guests in 12 cabins. She also sleeps up to 46 crew including seven engineers to ensure reliability and five personal staff for seven-star service.

Her custom tenders, including 11.2m (36.7ft) limo and 8.5m (27.9ft) sport, both by Vikal, are stowed on the main deck aft and launched on horizontal davits through shell doors. She also has storage for her additional tenders, as well as a huge selection of toys and scuba diving equipment. Twin 5,300hp Wartsila diesel engines give her a top speed of 20 knots, she cruises comfortably at 18 knots and has a transoceanic maximum range of 6,000nm at her passage speed of 16 knots. Two sets of Quantum zero speed stabilisers ensure comfort on arrival.

Key features

Iconic pedigree yacht delivered by Northern-European shipyard Lurssen

Elegant exterior design by Tim Heywood

Beautiful interior design by Terence Disdale

Flexible accommodation for 24 guests, 10 staff and 46 crew members

Fantastic storage capacity for large tenders and toys

Two helipads

Elevator

Large swimming pool and jacuzzi on sun deck

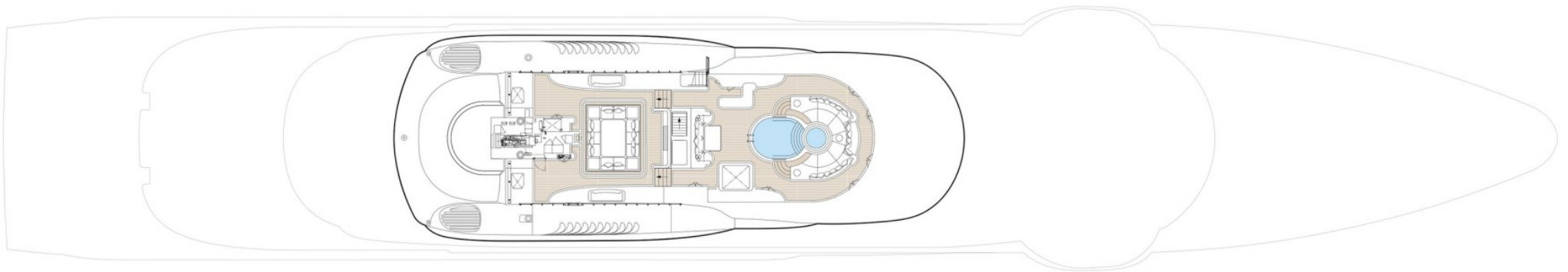
Large wellness area with sea terrace, including gym, massage room, spa and plunge pool

Range of 6,000 nm at cruising speed

Tenders

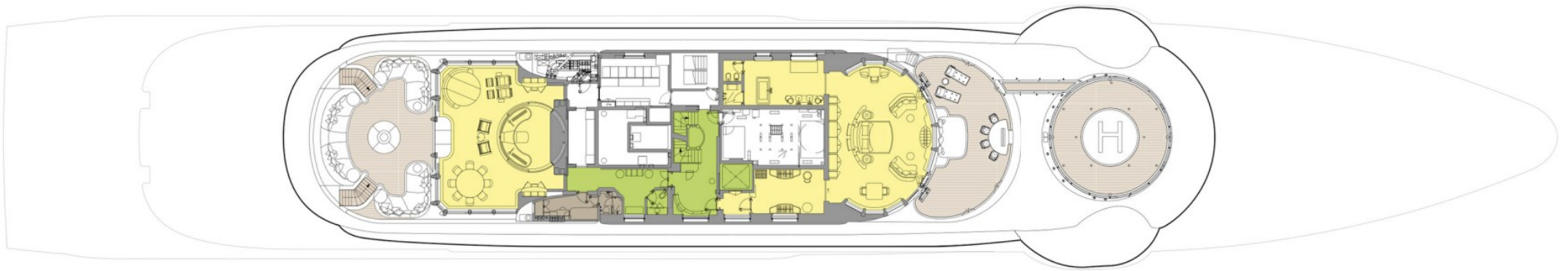
11.2m Vikal limo tender, 8.5m Vikal sports tender, 10m RIB X-tender, 9m Hinkley, 6.2m Pascoe work boat, 6.5 Pascoe work boat & 3.6m Zodiac RIB

SUN DECK



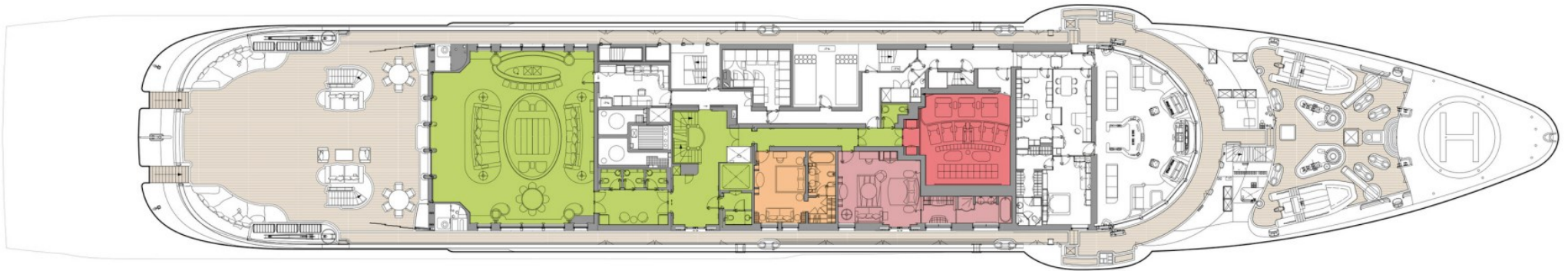
GUEST AREAS MASTER SUITE VIP SUITE GUEST CABINS CINEMA GYM MASSAGE SUITE BEAUTY SALON SPA HAMMAM POOL STAFF CABINS BUTLER'S CABIN

TOP DECK



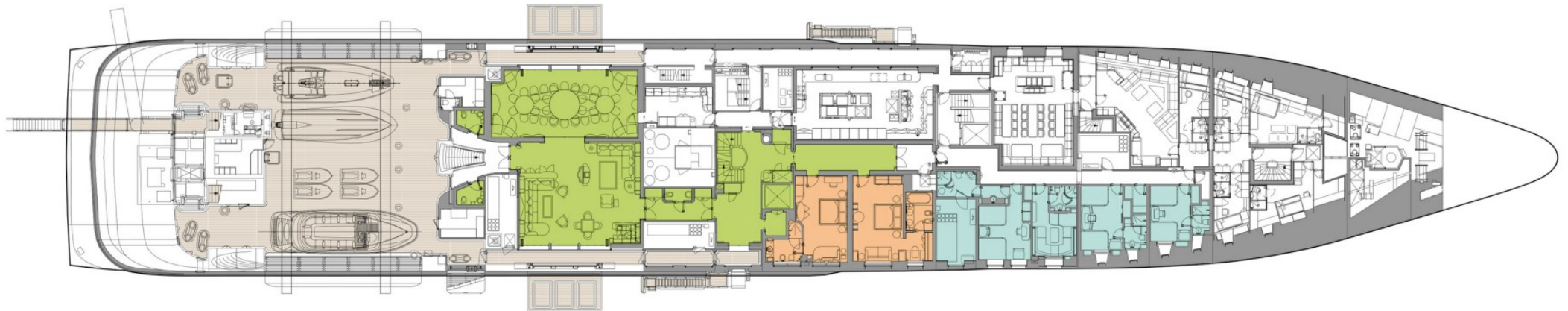
 GUEST AREAS  MASTER SUITE  VIP SUITE  GUEST CABINS  CINEMA  GYM  MASSAGE SUITE  BEAUTY SALON  SPA  HAMMAM  POOL  STAFF CABINS  BUTLER'S CABIN

UPPER DECK



■ GUEST AREAS ■ MASTER SUITE ■ VIP SUITE ■ GUEST CABINS ■ CINEMA ■ GYM ■ MASSAGE SUITE ■ BEAUTY SALON ■ SPA ■ HAMMAM ■ POOL ■ STAFF CABINS ■ BUTLER'S CABIN

MAIN DECK



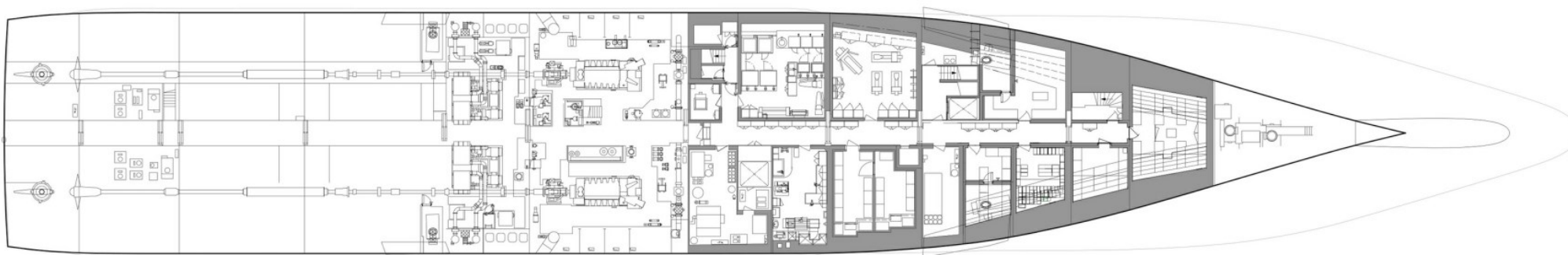
GUEST AREAS MASTER SUITE VIP SUITE GUEST CABINS CINEMA GYM MASSAGE SUITE BEAUTY SALON SPA HAMMAM POOL STAFF CABINS BUTLER'S CABIN

LOWER DECK



GUEST AREAS MASTER SUITE VIP SUITE GUEST CABINS CINEMA GYM MASSAGE SUITE BEAUTY SALON SPA HAMMAM POOL STAFF CABINS BUTLER'S CABIN

BOTTOM DECK



GUEST AREAS MASTER SUITE VIP SUITE GUEST CABINS CINEMA GYM MASSAGE SUITE BEAUTY SALON SPA HAMMAM POOL STAFF CABINS BUTLER'S CABIN

BURGESS

WORLD CLASS. WORLD WIDE.

London +44 20 7766 4300	Monaco +377 97 97 81 21	New York +1 212 223 0410	Miami +1 305 672 0150	Singapore +65 9665 8990	Beverly Hills +1 310 424 5112	Palma +34 971 495 413	Athens +30 210 967 1661
Dubai +971 4 425 5874	Phuket +66 7623 9739	Hong Kong +852 6496 2094	Tokyo +81 46 738 8612	Sydney +61 499 945 557	Mumbai +91 98211 67253	Shanghai +86 187 0898 6800	

Advertising of these vessel(s) in printed publications, on the internet or in any other medium is not permitted without prior written permission from Burgess. All particulars are given in good faith and are believed correct but they cannot be guaranteed.

Last updated: 16 April 2024