

PEARL



PEARL

APERÇU.

Fans of award winning design will love this yacht as the interiors are a work of genuinely sophisticated contemporary art. Dutch studio Omega Architects has played with contrast in a spectacular way, contrasting black and white leather, black marble and backlit white onyx, glossy bookmatched makassar wood and focussing on circular forms in the social areas. The effect is incredibly impressive.

She's also a very successful charter yacht with an abundance of outside space, plenty of toys and a crew that always gets five star feedback. Up on the sun deck she has a climate controlled gym for workouts with a view. Once you've worked up a sweat you can freshen up with a shower, walk aft and take a dip in the jacuzzi and admire the views then relax on the sunpads forward. If it gets too hot, there's always the day bed in the shade.

Guests can take the steps aft down to the bridge deck aft for a shaded al fresco lunch or to bask in the sun lounge. At night a large TV flips down from above the table and the sun lounge transforms into an outdoor cinema for movies under the stars. Steps forward lead down to the Portuguese bridge, the perfect place for a sundowner, and there's a foredeck terrace with plenty of space for sun lounging, exercise equipment or entertainment. Guests can enjoy snacks in the main deck aft lounge before heading down to the swim platform to play with all the watertoys.

MYSKY welcomes up to 12 guests in five spectacular cabins: a full beam main deck master with its own study and private balcony, plus two double cabins and two twin cabins on the lower deck, with an additional berth in each twin cabin.

Principales caractéristiques

Regularly maintained

A fully equipped gym

Outdoor cinema screen

Jacuzzi on the sun deck

Zero speed stabilisers to reduce any rolling motion while at anchor

PEARL

At anchor



Sun deck forward



Sun deck jacuzzi



Upper deck aft



PEARL

Main deck aft



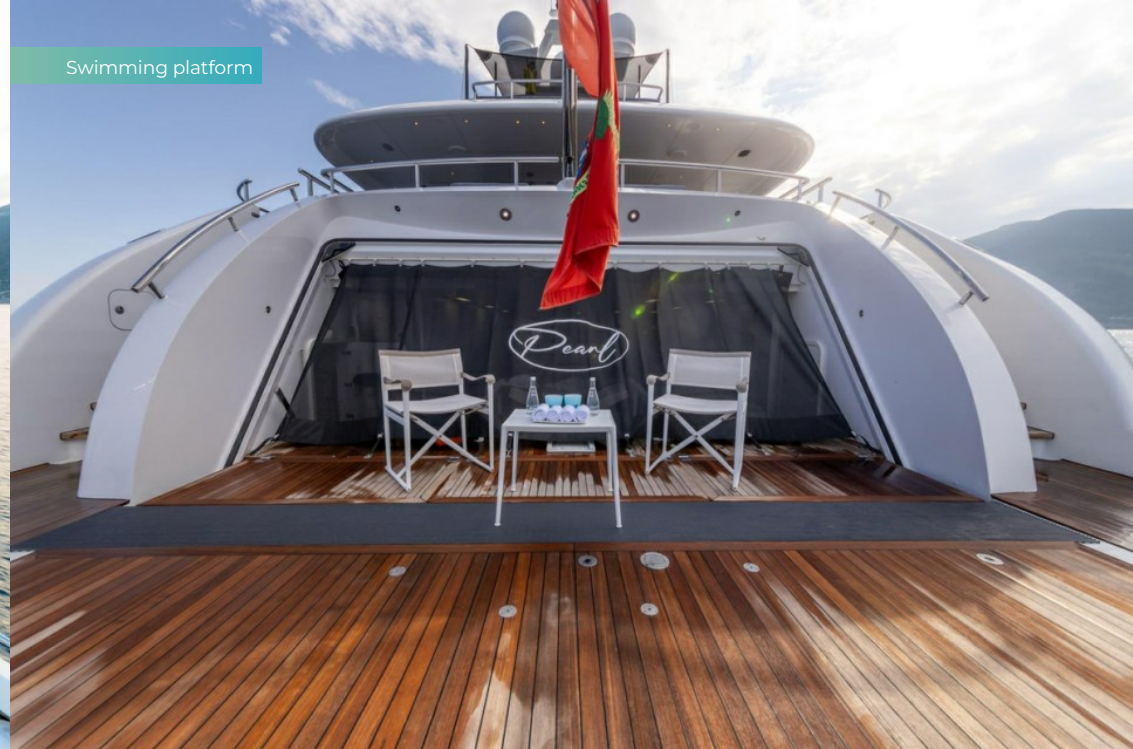
Foredeck



Foredeck



Swimming platform



PEARL

Sky lounge



Sky lounge



Master cabin



Master cabin desk area



PEARL

Master cabin balcony



Master cabin en suite



Master cabin en suite



Double cabin



PEARL

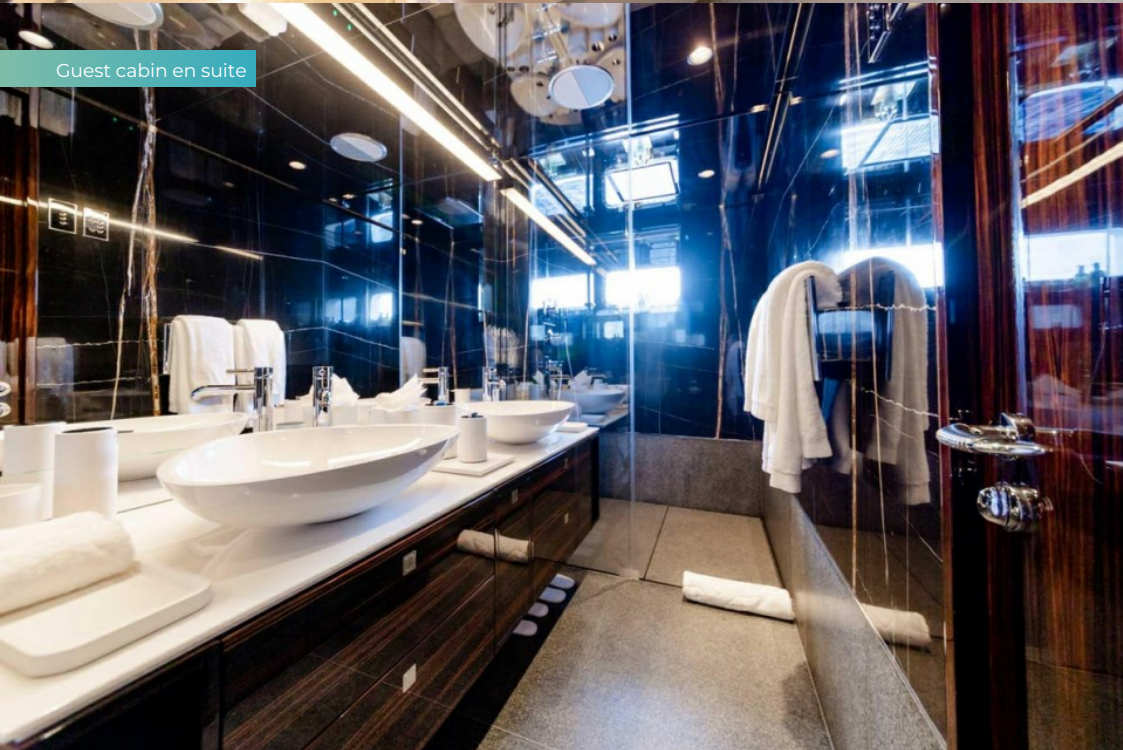
Double cabin



Twin cabin



Guest cabin en suite



Sun deck gym



PEARL

Outdoor cinema



Watertoys



Watersports



At anchor at night



BURGESS

Discover the difference.
burgessyachts.com



PEARL

At anchor



BURGESS

Discover the difference.
burgessyachts.com



PEARL

SPECIFICATIONS.



Longueur
51,1m



Chantier
2014 (refitted 2023), Heesen, The Netherlands



Designer d'intérieur
Erick Van Egeraart



Largeur
9,6m



Tirant d'eau
2,8m



Tonnage brut
648



Vitesse de croisière
12 knots



Vitesse maximale
15 knots



Consommation de carburant en vitesse de croisière
280 litres par heure



Moteurs
2 x 1 850hp MTU



Invités
12



Nb de cabines invités
5 (3 x double, 2 x twin, 2 x additional berths)



Équipage
11

[Voir le yacht sur le site](#)
[Regarder la vidéo du yacht](#)



PEARL

ANNEXES & JEUX NAUTIQUES



1 x Tender



1 x Deck jacuzzi



2 x Waverunners



2 x SeaBobs



2 x Kayaks



4 x Stand up paddleboards



Wakeboard



Waterskis



Inflatable tows



Scuba diving equipment



Snorkelling gear

PEARL

REMISE EN FORME & BIEN-ETRE



Boxing equipment



Free weights



Treadmill

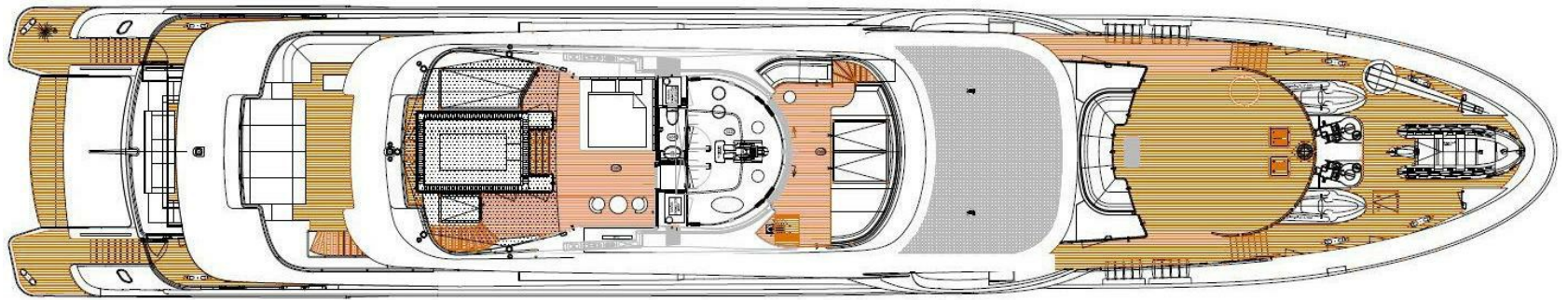


Yoga mats



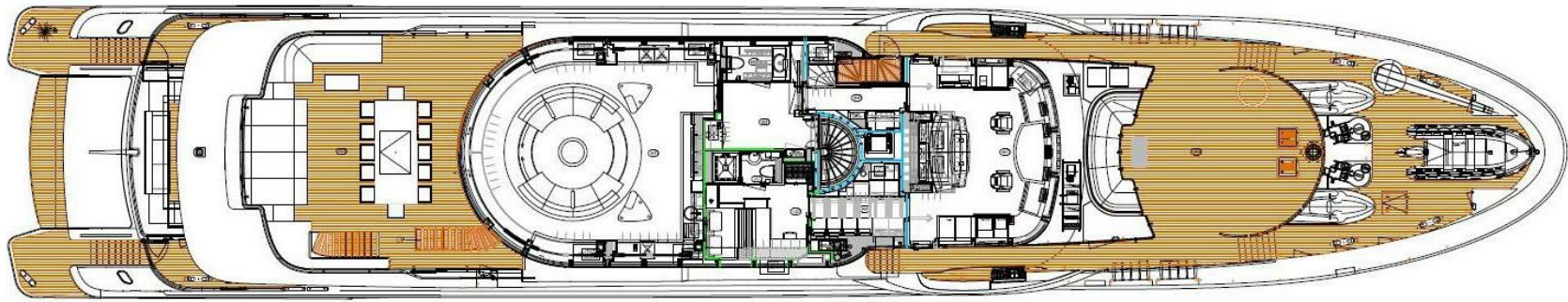
PEARL

Sun deck



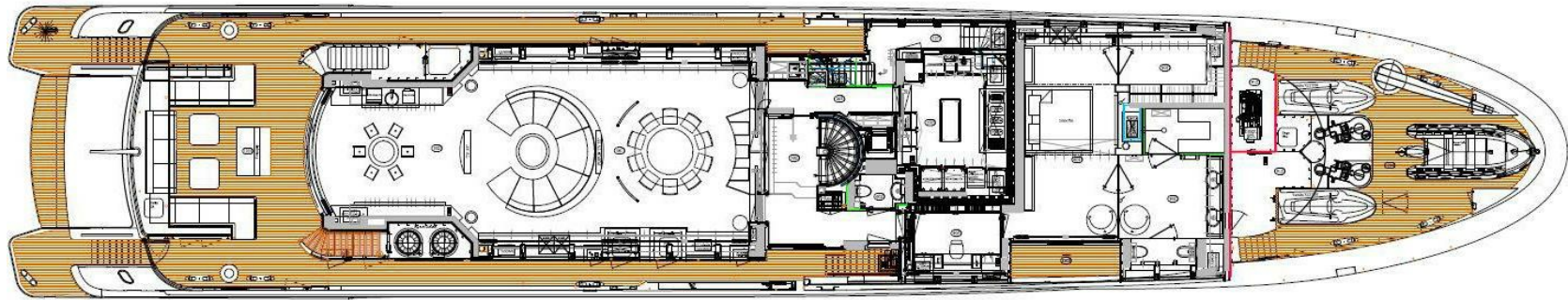
PEARL

Upper deck



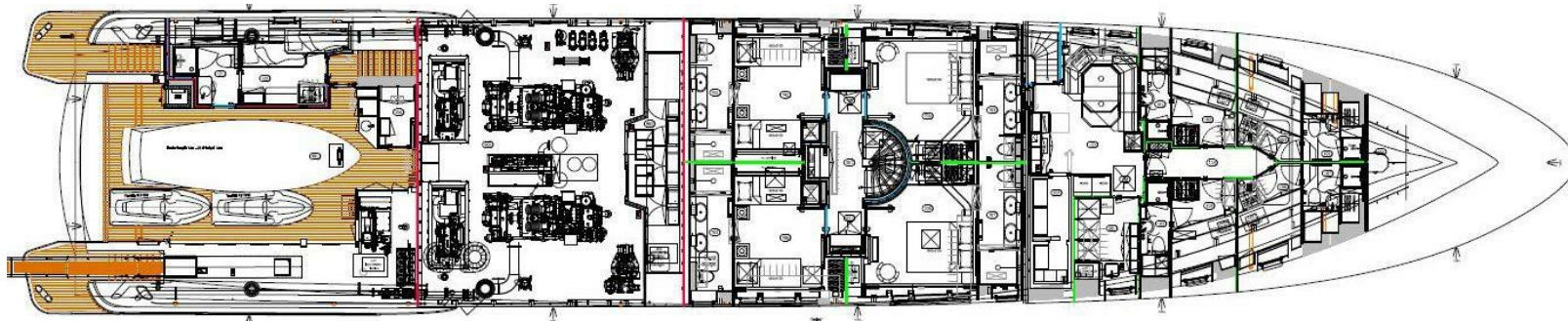
PEARL

Main deck



PEARL

Lower deck



BURGESS

WORLD CLASS.
WORLD WIDE.

London +44 20 7766 4300	Monaco +377 97 97 81 21	New York +1 212 223 0410	Miami +1 305 672 0150	Singapore +65 9665 8990	Beverly Hills +1 310 424 5112	Palma +34 971 495 413	Athens +30 210 967 1661
Dubai +971 4 425 5874	Phuket +66 7623 9739	Hong Kong +852 6496 2094	Tokyo +81 46 738 8612	Sydney +61 499 945 557	Mumbai +91 98211 67253	Shanghai +86 187 0898 6800	Rio de Janeiro +55 21 2553-3238

La publicité de ce(s) navire(s) dans des publications imprimées, sur Internet ou sur tout autre support n'est pas autorisée sans l'autorisation écrite préalable de Burgess.
Toutes les informations sont données de bonne foi et sont considérées comme exactes, mais elles ne peuvent être garanties.

Dernière mise à jour : 10 décembre 2024