

# PEARL

---



PEARL

# OVERVIEW.

**Fans of award winning design will love this yacht as the interiors are a work of genuinely sophisticated contemporary art. Dutch studio Omega Architects has played with contrast in a spectacular way, contrasting black and white leather, black marble and backlit white onyx, glossy bookmatched makassar wood and focussing on circular forms in the social areas. The effect is incredibly impressive.**

She's also a very successful charter yacht with an abundance of outside space, plenty of toys and a crew that always gets five star feedback. Up on the sun deck she has a climate controlled gym for workouts with a view. Once you've worked up a sweat you can freshen up with a shower, walk aft and take a dip in the jacuzzi and admire the views then relax on the sunpads forward. If it gets too hot, there's always the day bed in the shade.

Guests can take the steps aft down to the bridge deck aft for a shaded al fresco lunch or to bask in the sun lounge. At night a large TV flips down from above the table and the sun lounge transforms into an outdoor cinema for movies under the stars. Steps forward lead down to the Portuguese bridge, the perfect place for a sundowner, and there's a foredeck terrace with plenty of space for sun lounging, exercise equipment or entertainment. Guests can enjoy snacks in the main deck aft lounge before heading down to the swim platform to play with all the watertoys.

MYSKY welcomes up to 12 guests in five spectacular cabins: a full beam main deck master with its own study and private balcony, plus two double cabins and two twin cabins on the lower deck, with an additional berth in each twin cabin.

## Key features

---

**Regularly maintained**

---

**A fully equipped gym**

---

**Outdoor cinema screen**

---

**Jacuzzi on the sun deck**

---

**Zero speed stabilisers to reduce any rolling motion while at anchor**

---

PEARL

At anchor



Sun deck forward



Sun deck jacuzzi



Upper deck aft



PEARL

Main deck aft



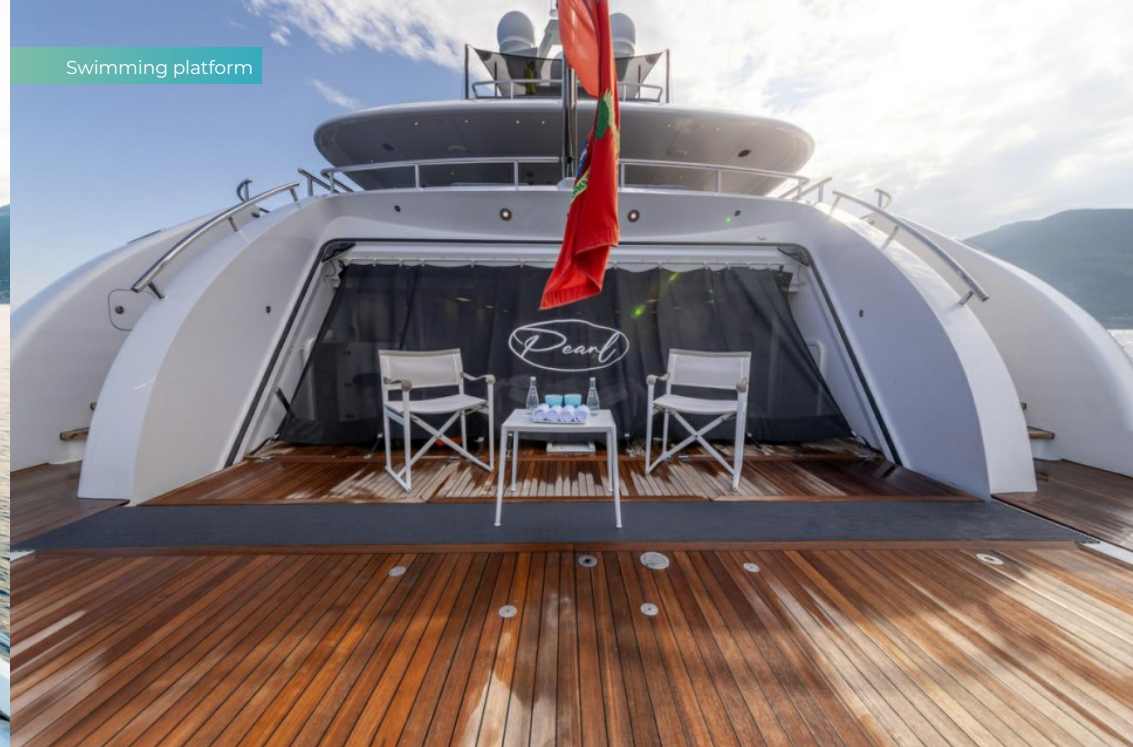
Foredeck



Foredeck



Swimming platform



PEARL

Sky lounge



Sky lounge



Master cabin



Master cabin desk area



PEARL

Master cabin balcony



Master cabin en suite



Master cabin en suite



Double cabin



PEARL

Double cabin



Twin cabin



Guest cabin en suite



Sun deck gym



PEARL

Outdoor cinema



Watertoys



Watersports



At anchor at night



BURGESS

Discover the difference.  
burgessyachts.com





PEARL

At anchor



BURGESS

Discover the difference.  
burgessyachts.com



PEARL

# SPECIFICATION.



Length  
**51.1m (167.6ft)**



Built  
**2014 (refitted 2023), Heesen, The Netherlands**



Interior designer  
**Erick Van Egeraart**



Beam  
**9.6m (31.5ft)**



Draft  
**2.8m (9.2ft)**



Gross tonnage  
**648**



Cruising speed  
**12 knots**



Maximum speed  
**15 knots**



Fuel consumption at cruising speed  
**280 litres per hour**



Engines  
**2 x 1,850hp MTU**



Guests  
**12**



No. of guest cabins  
**5 (3 x double, 2 x twin, 2 x additional berths)**



Crew  
**11**

[View yacht on website](#)

[Watch yacht video](#)



PEARL

# TENDERS & TOYS



1 x Tender



1 x Deck jacuzzi



2 x Waverunners



2 x SeaBobs



2 x Kayaks



4 x Stand up paddleboards



Wakeboard



Waterskis



Inflatable tows



Scuba diving equipment



Snorkelling gear

PEARL

# FITNESS & WELLNESS



Boxing equipment



Free weights



Treadmill

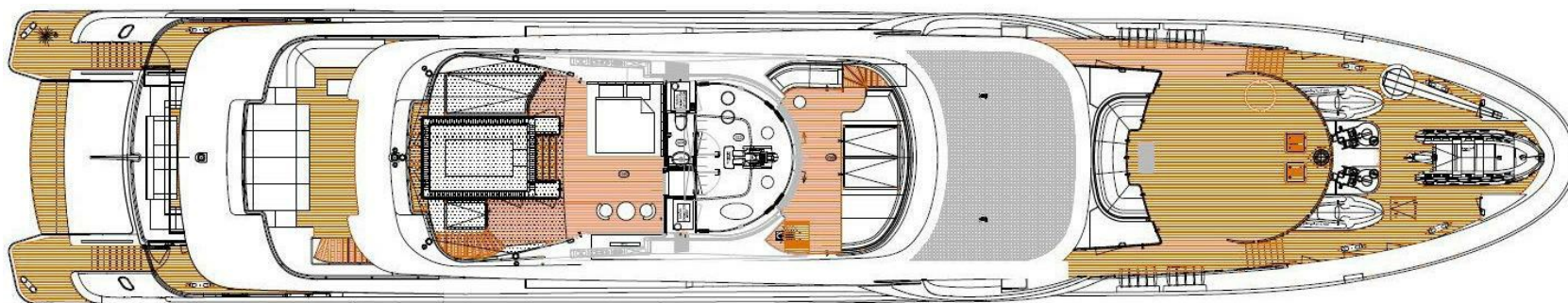


Yoga mats



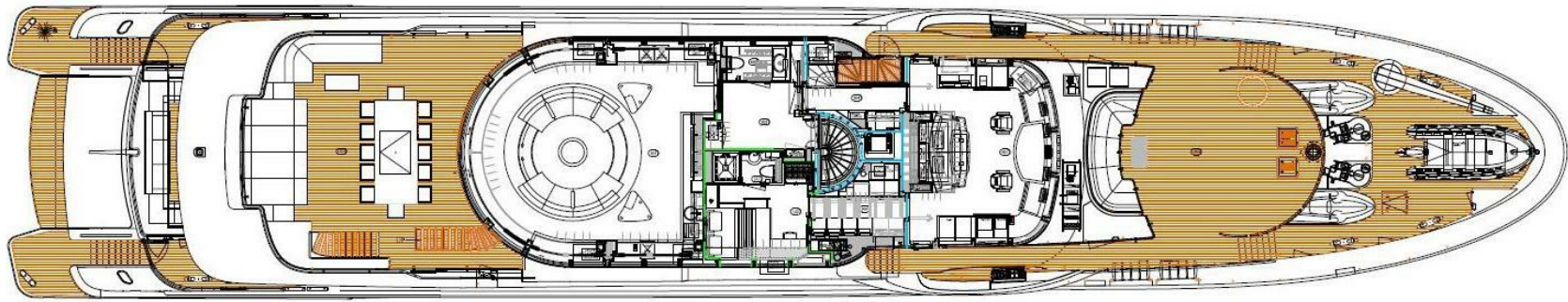
PEARL

Sun deck



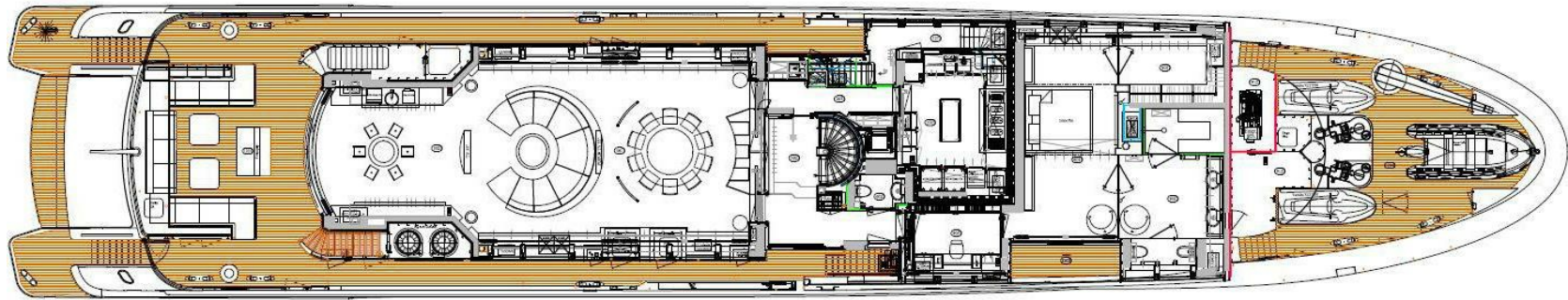
# PEARL

Upper deck



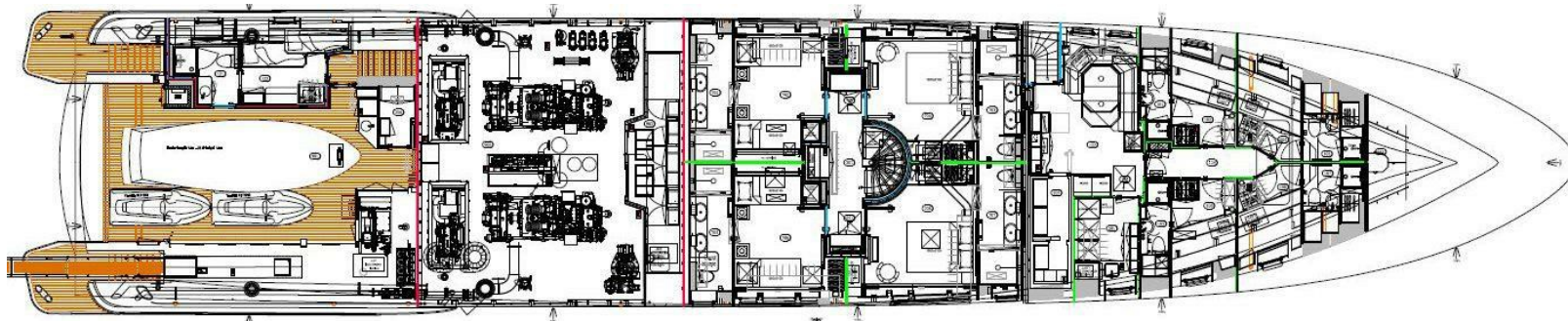
PEARL

Main deck



# PEARL

Lower deck





# BURGESS

# WORLD CLASS. WORLD WIDE.

<b>London</b> +44 20 7766 4300	<b>Monaco</b> +377 97 97 81 21	<b>New York</b> +1 212 223 0410	<b>Miami</b> +1 305 672 0150	<b>Singapore</b> +65 9665 8990	<b>Beverly Hills</b> +1 310 424 5112	<b>Palma</b> +34 971 495 413	<b>Athens</b> +30 210 967 1661
<b>Dubai</b> +971 4 425 5874	<b>Phuket</b> +66 7623 9739	<b>Hong Kong</b> +852 6496 2094	<b>Tokyo</b> +81 46 738 8612	<b>Sydney</b> +61 499 945 557	<b>Mumbai</b> +91 98211 67253	<b>Shanghai</b> +86 187 0898 6800	<b>Rio de Janeiro</b> +55 21 2553-3238

---

Advertising of these vessel(s) in printed publications, on the internet or in any other medium is not permitted without prior written permission from Burgess. All particulars are given in good faith and are believed correct but they cannot be guaranteed.

Last updated: 10 December 2024