

# PEARL

---





PEARL

# SPECIFICATION.



Asking price  
**EUR 11,500,000**



Built  
**2024, Kingship Marine, China**



Length  
**43.9m (144ft)**



Beam  
**8.9m (29.4ft)**



Draft  
**2.7m (8.9ft)**



Gross tonnage  
**499**



Cruising speed  
**13.5 knots**



Maximum speed  
**16 knots**



Range  
**3,500 nm**



Lying  
**Under construction**



Class  
**RINA C+ HULL MACH, Ych Unrestricted Navigation, EFP Compliance LY2**



Exterior designer  
**Horacio Bozzo Design**



Interior designer  
**77D**



Construction  
**Hull - Steel, Superstructure - Aluminium, Deck - Teak**



Crew  
**9**



Guests  
**10**



Cabins  
**5 (3 × double, 2 × twin)**



Engines  
**2 × 1,450hp Caterpillar**

## Note

Not available for sale to US residents while in US waters.

[View yacht on website](#)





PEARL



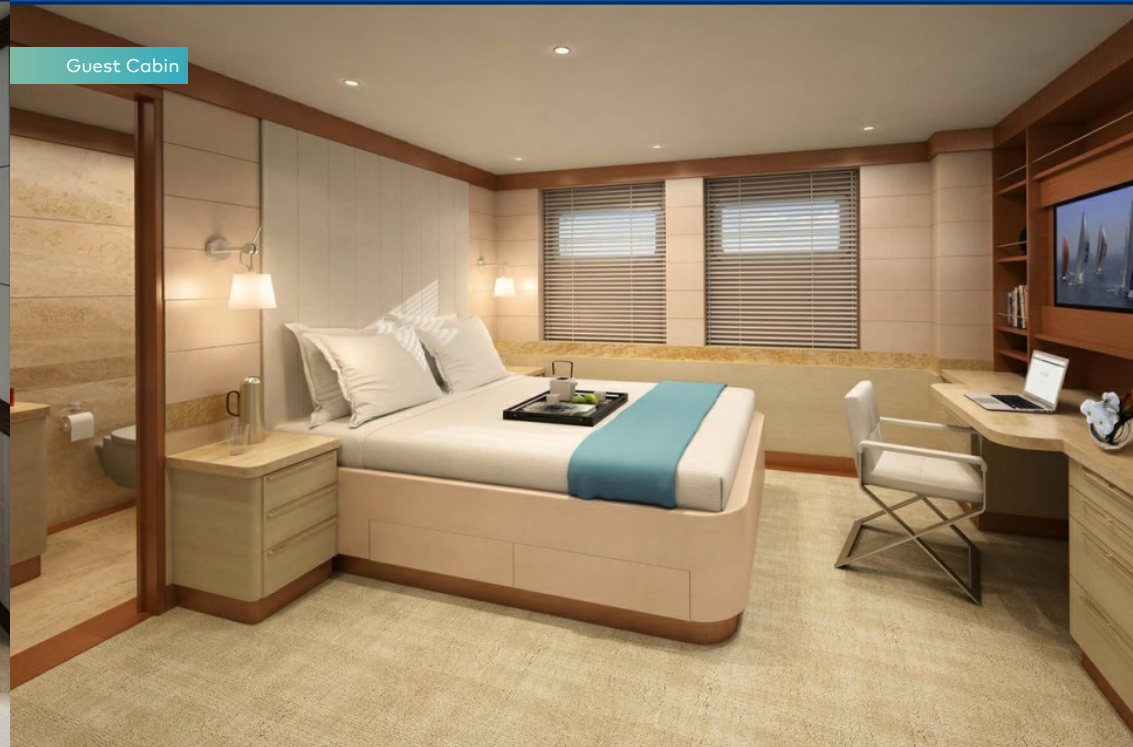
Main Saloon



Master Cabin



Guest Cabin





## PEARL

Bridge Deck Saloon



Exterior area



Exterior area



Exterior area





PEARL

Exterior area



# OVERVIEW.

PEARL is a 43.9m (144ft) explorer yacht with a steel hull and aluminium superstructure. Naval architecture and exterior design are by Horacio Bozzo's Axis Group Yacht Design studio and interiors are by Singapore's Seventy Seven Design. Currently under construction to RINA classification, this 499GT yacht is due for delivery by the Kingship yard in China late in 2021.

Outside spaces include a generous sun deck with a jacuzzi forward nestling among sunpads. There is dining for 10 guests and seating under the hardtop, sun lounging aft and an abundance of versatile deck space for exercise, relaxation and entertainment.

On the upper deck aft is a sun lounge and a fully equipped sit up bar while forward there is another sun lounge and a large area of sunpads. There is a shaded open air dining for 10 guests on the main deck aft with a sun lounge aft and steps either side lead down to the swim platform and tender garage for a Castoldi Jet Tender 21 and a selection of watertoys.

The upper deck sky lounge has seating facing a large TV screen for movie nights and a fully equipped sit up bar. Full height sliding glass doors port and starboard deliver generous natural light and open the space up onto the side decks and another opens onto the upper deck aft.

The main saloon has seating centrally around coffee tables with banquette seating port and starboard and full height sliding glass doors open onto the main deck aft. Forward is a formal dining area for 10-12 guests.

Forward on the main deck is the full beam owner's suite with a private study, walk in wardrobe and his and hers bathrooms with shower. Below large picture windows to starboard is a seating area with a coffee table for private breakfasts and there is a day bed to port. On the lower deck two double cabins and two twin cabins complete family friendly accommodation for 10 guests.

Twin 1,450hp Caterpillar diesel engines give her a top speed of 16 knots, a cruising speed of 13.5 knots and she has a range of 3,500nm at 10 knots. Zero speed stabilisers ensure comfort at anchor.

## Key features

---

**Twin C32 ACERT Caterpillar engines producing a maximum speed of 16 knots and a cruising speed of 13.5 knots**

---

**Built to RINA and MCA LY2**

---

**Sub 500GT**

---

**Large open deck spaces on the sun deck, bridge and main decks forward and aft**

---

**Striking contemporary profile**

---

**Available for delivery in 2022**

---

## Tenders

---

To be decided

# BURGESS

# WORLD CLASS. WORLD WIDE.

London +44 20 7766 4300	Monaco +377 97 97 81 21	New York +1 212 223 0410	Miami +1 305 672 0150	Singapore +65 9665 8990	Beverly Hills +1 310 424 5112	Palma +34 971 495 413	Athens +30 210 967 1661
	Dubai +971 4 425 5874	Phuket +66 7623 9739	Hong Kong +852 6496 2094	Tokyo +81 46 738 8612	Sydney +61 499 945 557	Mumbai +91 98211 67253	

Advertising of these vessel(s) in printed publications, on the internet or in any other medium is not permitted without prior written permission from Burgess. All particulars are given in good faith and are believed correct but they cannot be guaranteed.

Last updated: 01 March 2024