

PARSIFAL III

PARSIFAL III

APERÇU.

Built for an experienced yacht owner, the stylish sailing yacht 53.8m (176.5ft) PARSIFAL III, from the renowned Perini Navi shipyard, has an exquisite Remi Tessier-designed interior. On launch in 2005 she won no fewer than five prestigious sailing superyacht awards and has become one of the most popular sailing yachts for charter. PARSIFAL III is highly recommended for anyone looking for a combination of excellent performance with superb levels of comfort.

As a charter guest you could begin your day with a sunrise yoga session on the large foredeck or have an early morning swim in the ocean before taking breakfast on the main deck aft. Here a large curved sofa and loose seating surround an oval dining table shaded by the overhang of the flybridge deck. After breakfast, some of the guests may choose to relax in the many lounging areas while others might want to take advantage of the calm waters and jump in to learn a new watersport. An extensive toybox has something for all ages to enjoy. However you choose to spend the morning, coming together for an al fresco lunch, perhaps prepared on the Teppanyaki grill, is the perfect opportunity to regroup and catch up with your friends and family.

Numerous entertainment options will keep the entire family entertained throughout the afternoon. Relax in the jacuzzi or on the sumptuous sunloungers, or enjoy some relaxation time in the main lounge, perhaps with a movie, all while PARSIFAL III sails on to your next port of call; if the winds are in your favour you could even be moving along under full sail at exhilarating speeds of up to 18 knots.

With the sun setting on the horizon, enjoy more time on deck taking in the view with a cocktail, followed by dinner either in the formal dining room or al fresco on the main deck aft. When it's time to retire, PARSIFAL III's vast master suite is located aft and benefits from direct access to an extra-large swimming platform – perfect for a private early morning swim. Amidship there are two further doubles and two twins with additional pullman berths. As with all of the interior guest areas, the décor is streamlined and minimalistic, with polished dark ebony and wenge woods contrasting with fine furnishings of cream leather, glass and stainless steel. A stunning retreat, your guests will feel cosseted in luxury as they fall into a deep slumber ready for another day of fun.

Principales caractéristiques

Winner of the Best Sailing Yacht of the Year, Best Interior Design - Sail Yacht and Best Sailing Yacht Interior at the World Superyacht Awards 2006

Recently refitted

Regularly maintained

Exercise equipment

Hydraulic swim platform

Flexible cabin configurations

Jacuzzi on the flybridge

PARSIFAL III

Aerial view



Flybridge



Flybridge jacuzzi



Hydraulic swim platform



PARSIFAL III

Main deck aft



Main deck aft dining area



Main deck lounge



Main deck lounge



PARSIFAL III

Main deck dining area



Main deck dining area



Lower deck master cabin



Lower deck twin cabin



PARSIFAL III

Aerial view



Watersports



PARSIFAL III SPÉCIFICATIONS.



Longueur
53,8m



Chantier
2005 (refitted 2021), Perini Navi, Italy



Designer d'intérieur
Rémi Tessier



Largeur
10,7m



Tirant d'eau min / max
-/4,5m



Déplacement
448 tonnes



Vitesse de croisière
10 knots



Vitesse maximale
14 knots



Consommation de carburant en vitesse de croisière
100 litres par heure



Moteurs
1 x 1 500hp Caterpillar



Invités
12



Nb de cabines invités
6 (4 x double, 2 x twin, 2 x additional berths)



Équipage
9

[Voir le yacht sur le site](#)



Annexes & jeux nautiques



2 x Tenders



2 x Sailing dinghies



1 x Deck jacuzzi



2 x SeaBobs



2 x Stand up paddleboards



Wakeboard



Windsurfer



Waterskis



Inflatable tows



Fishing gear

Remise en forme & bien-être



Free weights



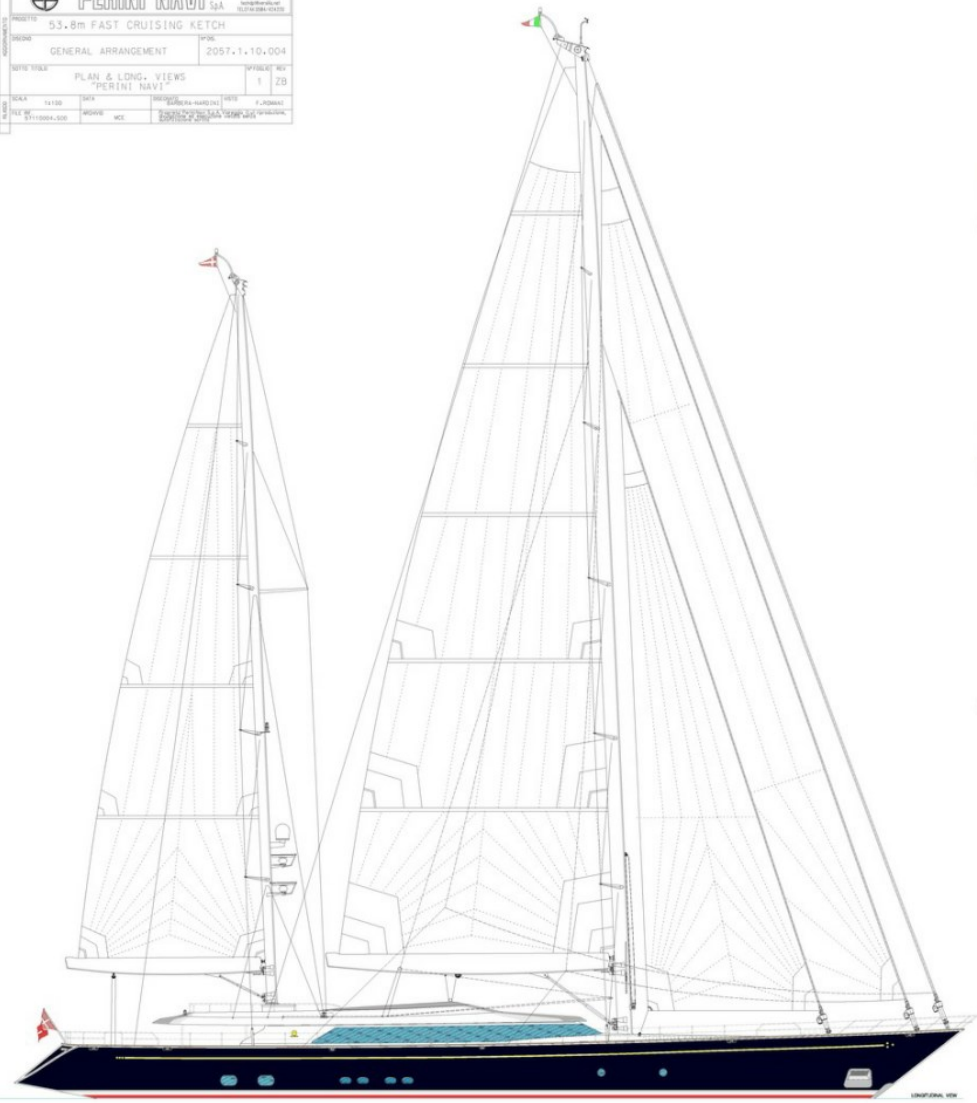
Jump ropes



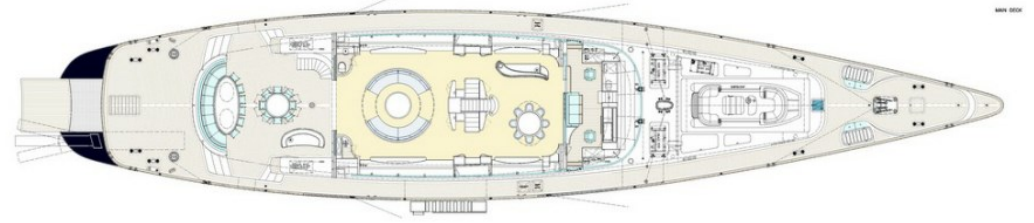
Yoga mats



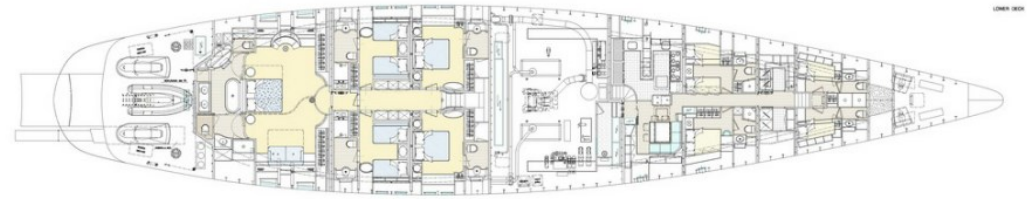
 PERINI NAVI 52A		TELEFONO: 02.7600111 TELEFAX: 02.7600112 TELEGRAM: 310004-500
MODELLO: 53.8m FAST CRUISING KETCH	ANNO: 2007.1.10.004	
GENERAL ARRANGEMENT		
METRO SCALE: PLAN & LONG. VIEWS "PERINI NAVI"	SPALLETTI: 1/2B	
SCALE: 1:100	DATA:	PROGETTISTA: MARCO DI GIACOMO
REF. N°: 8110004-500	MODULO: MCE	DIRETTORE GENERALE: P. FERRARI



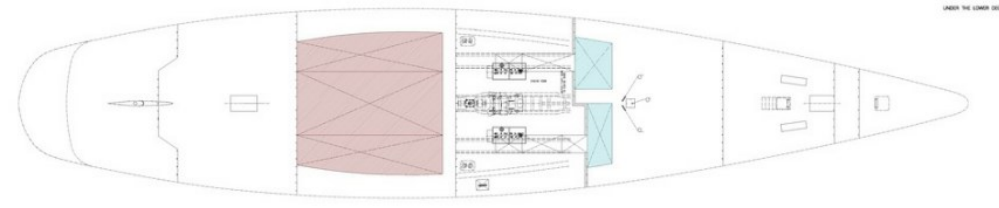
FLYING BRIDGE



MAIN DECK



LOWER DECK



LOWER LOWER DECK

BURGESS

WORLD CLASS. WORLD WIDE.

London +44 20 7766 4300	Monaco +377 97 97 81 21	New York +1 212 223 0410	Miami +1 305 672 0150	Singapore +65 9665 8990	Beverly Hills +1 310 424 5112	Palma +34 971 495 413	Athens +30 210 967 1661
	Dubai +971 4 425 5874	Phuket +66 7623 9739	Hong Kong +852 6496 2094	Tokyo +81 46 738 8612	Sydney +61 499 945 557	Mumbai +91 98211 67253	

La publicité de ce(s) navire(s) dans des publications imprimées, sur Internet ou sur tout autre support n'est pas autorisée sans l'autorisation écrite préalable de Burgess.
Toutes les informations sont données de bonne foi et sont considérées comme exactes, mais elles ne peuvent être garanties.

Dernière mise à jour : 28 mars 2024