

# PANAKEIA



# OVERVIEW.

**PANAKEIA provides you and your guests with an exceptional amount of space and internal volume. Her ingenious design allocates the widest sections of the yacht to your enjoyment and offers you features seldom found together on a vessel of this size. All of this comes with the added advantage of sub 46m/150ft cost efficiency, making her an outstanding choice of yacht for your next charter.**

The full beam layout has allowed many areas of PANAKEIA to flourish. Like the forward master suite, furnished with a huge walk-in wardrobe and full-beam en suite bathroom. There's also an elevator to take guests effortlessly from the guest suites on the lower deck, via the lobby, to the beautiful sky lounge. The expansive sky lounge gives the impression of relaxing on a much larger yacht. It's here you unwind in the plush sofas and perhaps watch a movie with a drink from the marble-topped bar. Dinner can be served around the glorious dining table at the rear of the lounge. Wraparound floor-to-ceiling glass doors can be enclosed to create an intimate dining area. Alternatively, they can open to the sky lounge, the upper aft deck, or both.

Expansive living space aside, her interior design is breathtaking. Its mix of high-gloss Macassar ebony, matt zebrawood, and leather creates a modern stylish interior full of contemporary flair. The theme is carried from the communal areas to each of the lavish suites. PANAKEIA has five guest suites consisting of the master suite, three double berth suites, and one twin-berth suite; this offers a versatile accommodation arrangement. After a wonderful night's sleep, you can look forward to the day ahead. Will you spend it in the recessed beach club with sea-level seating, allowing you to take in views at water level or will you head for the bar on the sun deck? Will you relax on the foredeck sunpads or take advantage of all the on-the-water activities available on this fantastic yacht?

It's not just the inside that takes advantage of her shrewd design. From the main deck upwards, PANAKEIA has three full-width decks, climaxing in the amazing sun deck. Here, you and your party can enjoy al fresco dining at its finest. You can also enjoy drinks at the bar or the raised jacuzzi. In the cockpit and on the upper deck there are also beautiful al fresco lounge areas to enjoy. And wherever you are on PANAKEIA, you'll be having a delightful time.

## Key features

---

**Beach club at sea level**

---

**12m chase tender with dedicated captain**

---

**An elevator serving 3 decks, from the lower deck to the bridge deck**

---

**Jacuzzi on the sun deck**

---

**Zero speed stabilisers to reduce any rolling motion while at anchor**

---



# PANAKEIA

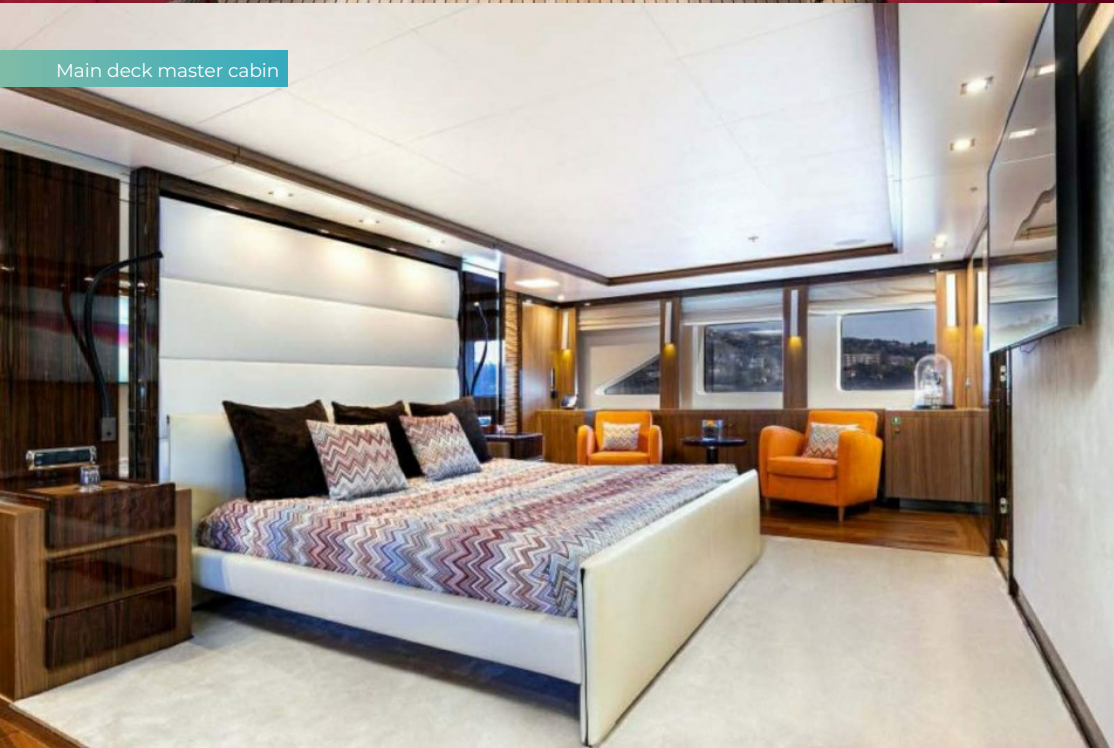
Aerial view



Beach club



Main deck master cabin



BURGESS

Discover the difference.  
burgessyachts.com





PANAKEIA

# SPECIFICATION.



Length  
**45.5m (149.2ft)**



Built  
**2008 (refitted 2018), Astondoa/MCIES, Spain**



Interior designer  
**Cristiano Gatto Design**



Beam  
**8.6m (28.2ft)**



Draft  
**2.3m (7.5ft)**



Gross tonnage  
**496**



Cruising speed  
**12 knots**



Maximum speed  
**16 knots**



Fuel consumption at cruising speed  
**150 litres per hour**



Engines  
**2 x 2,040hp MTU**



Guests  
**10**



No. of guest cabins  
**5 (4 x double, 1 x twin)**



Crew  
**9**

[View yacht on website](#)



BURGESS

Discover the difference.  
burgessyachts.com



PANAKEIA

# TENDERS & TOYS



1 × Towed tender



1 × Tender



1 × Deck jacuzzi



Waterslide



Trampoline



3 × Waverunners



1 × SeaBob



1 × Underwater scooter



Wakeboard



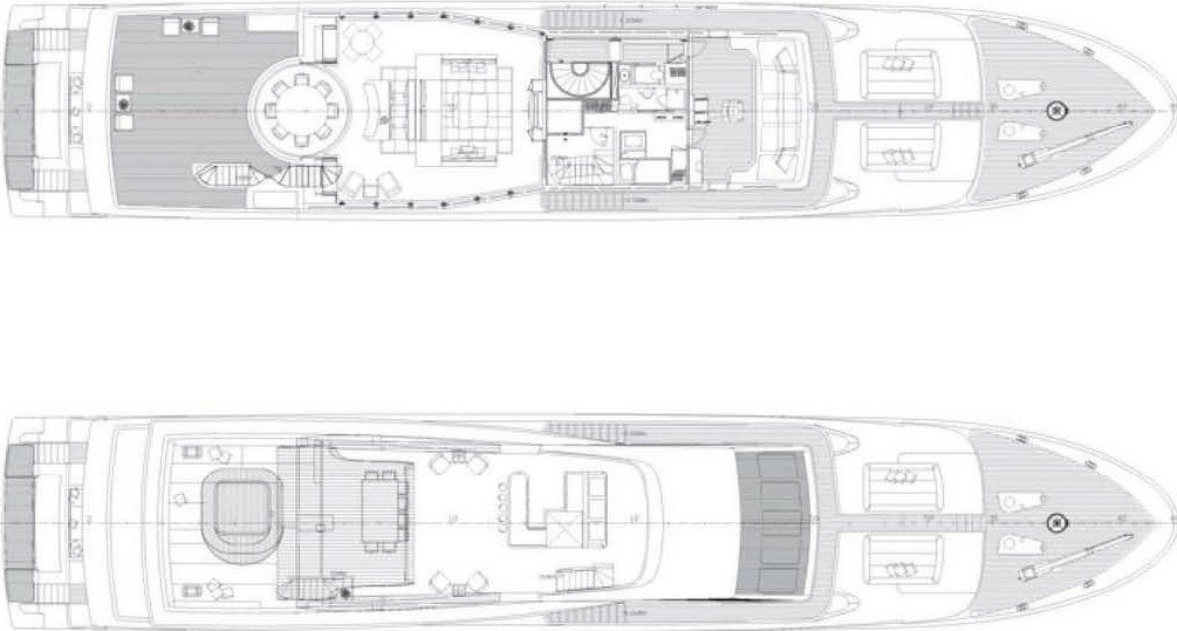
Inflatable toys

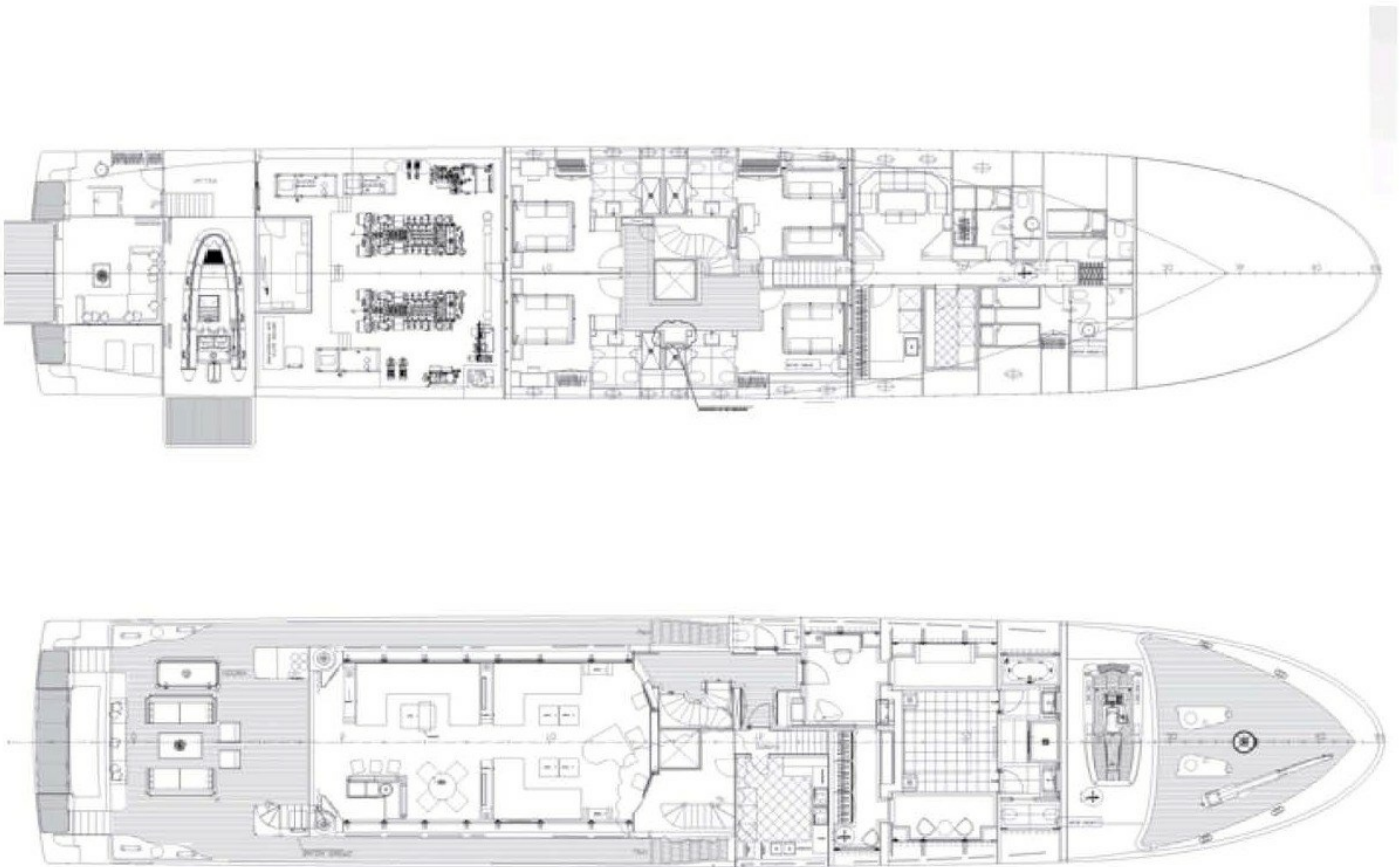


Scuba diving equipment



Snorkelling gear





# BURGESS

# WORLD CLASS. WORLD WIDE.

<b>London</b> +44 20 7766 4300	<b>Monaco</b> +377 97 97 81 21	<b>New York</b> +1 212 223 0410	<b>Miami</b> +1 305 672 0150	<b>Singapore</b> +65 9665 8990	<b>Beverly Hills</b> +1 310 424 5112	<b>Palma</b> +34 971 495 413	<b>Athens</b> +30 210 967 1661
<b>Dubai</b> +971 4 425 5874	<b>Phuket</b> +66 7623 9739	<b>Hong Kong</b> +852 6496 2094	<b>Tokyo</b> +81 46 738 8612	<b>Sydney</b> +61 499 945 557	<b>Mumbai</b> +91 98211 67253	<b>Shanghai</b> +86 187 0898 6800	<b>Rio de Janeiro</b> +55 21 2553-3238

Advertising of these vessel(s) in printed publications, on the internet or in any other medium is not permitted without prior written permission from Burgess. All particulars are given in good faith and are believed correct but they cannot be guaranteed.

Last updated: 10 December 2024