

PANAKEIA



PANAKEIA

APERÇU.

PANAKEIA provides you and your guests with an exceptional amount of space and internal volume. Her ingenious design allocates the widest sections of the yacht to your enjoyment and offers you features seldom found together on a vessel of this size. All of this comes with the added advantage of sub 46m/150ft cost efficiency, making her an outstanding choice of yacht for your next charter.

The full beam layout has allowed many areas of PANAKEIA to flourish. Like the forward master suite, furnished with a huge walk-in wardrobe and full-beam en suite bathroom. There's also an elevator to take guests effortlessly from the guest suites on the lower deck, via the lobby, to the beautiful sky lounge. The expansive sky lounge gives the impression of relaxing on a much larger yacht. It's here you unwind in the plush sofas and perhaps watch a movie with a drink from the marble-topped bar. Dinner can be served around the glorious dining table at the rear of the lounge. Wraparound floor-to-ceiling glass doors can be enclosed to create an intimate dining area. Alternatively, they can open to the sky lounge, the upper aft deck, or both.

Expansive living space aside, her interior design is breathtaking. Its mix of high-gloss Macassar ebony, matt zebrawood, and leather creates a modern stylish interior full of contemporary flair. The theme is carried from the communal areas to each of the lavish suites. PANAKEIA has five guest suites consisting of the master suite, three double berth suites, and one twin-berth suite; this offers a versatile accommodation arrangement. After a wonderful night's sleep, you can look forward to the day ahead. Will you spend it in the recessed beach club with sea-level seating, allowing you to take in views at water level or will you head for the bar on the sun deck? Will you relax on the foredeck sunpads or take advantage of all the on-the-water activities available on this fantastic yacht?

It's not just the inside that takes advantage of her shrewd design. From the main deck upwards, PANAKEIA has three full-width decks, climaxing in the amazing sun deck. Here, you and your party can enjoy al fresco dining at its finest. You can also enjoy drinks at the bar or the raised jacuzzi. In the cockpit and on the upper deck there are also beautiful al fresco lounge areas to enjoy. And wherever you are on PANAKEIA, you'll be having a delightful time.

Principales caractéristiques

Beach club at sea level

12m chase tender with dedicated captain

An elevator serving 3 decks, from the lower deck to the bridge deck

Jacuzzi on the sun deck

Zero speed stabilisers to reduce any rolling motion while at anchor

PANAKEIA

Aerial view



Beach club



Main deck master cabin



BURGESS

Discover the difference.
burgessyachts.com



PANAKEIA SPÉCIFICATIONS.



Longueur
45,5m



Chantier
2008 (refitted 2018), Astondoa/MCIES, Spain



Designer d'intérieur
Cristiano Gatto Design



Largeur
8,6m



Tirant d'eau
2,3m



Tonnage brut
499



Vitesse de croisière
12 knots



Vitesse maximale
16 knots



Consommation de carburant en vitesse de croisière
80 litres par heure



Moteurs
2 x 2 040hp MTU



Invités
10



Nb de cabines invités
5 (4 x double, 1 x twin)



Équipage
10

[Voir le yacht sur le site](#)



Annexes & jeux nautiques



1 x Towed tender



1 x Tender



1 x Deck jacuzzi



Waterslide



Trampoline



3 x Waverunners



1 x SeaBob



1 x Underwater scooter



Wakeboard



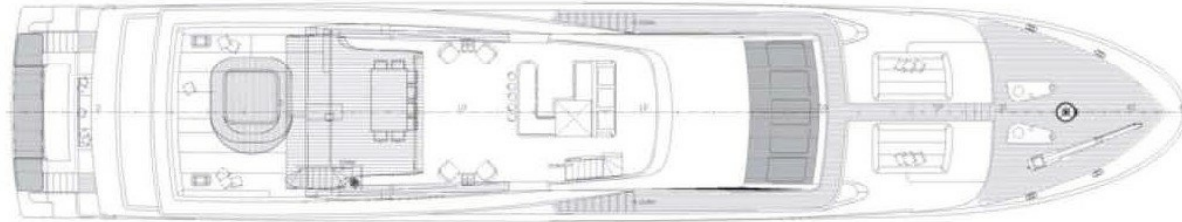
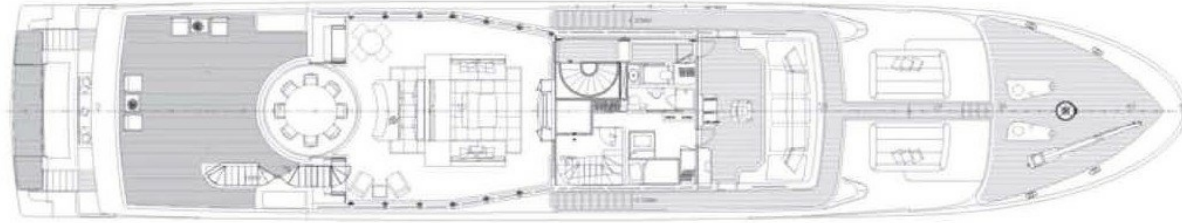
Inflatable toys

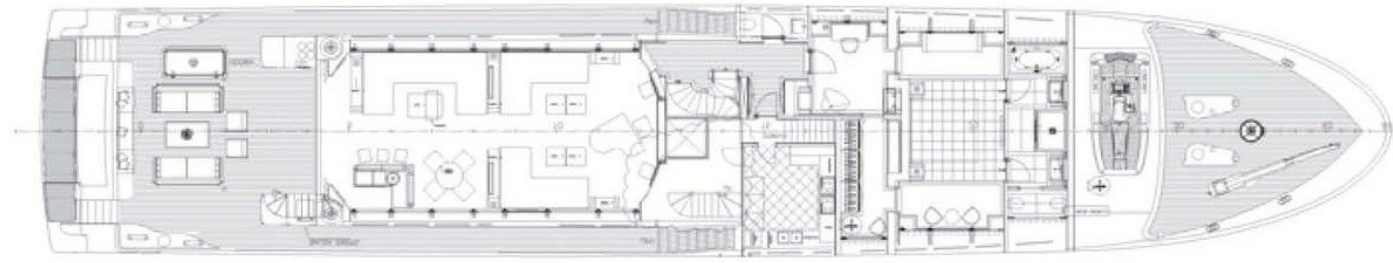


Scuba diving equipment



Snorkelling gear





BURGESS

WORLD CLASS. WORLD WIDE.

London +44 20 7766 4300	Monaco +377 97 97 81 21	New York +1 212 223 0410	Miami +1 305 672 0150	Singapore +65 9665 8990	Beverly Hills +1 310 424 5112	Palma +34 971 495 413	Athens +30 210 967 1661
	Dubai +971 4 425 5874	Phuket +66 7623 9739	Hong Kong +852 6496 2094	Tokyo +81 46 738 8612	Sydney +61 499 945 557	Mumbai +91 98211 67253	

La publicité de ce(s) navire(s) dans des publications imprimées, sur Internet ou sur tout autre support n'est pas autorisée sans l'autorisation écrite préalable de Burgess.
Toutes les informations sont données de bonne foi et sont considérées comme exactes, mais elles ne peuvent être garanties.

Dernière mise à jour : 01 mars 2024