

O'PTASIA



O'PTASIA SPÉCIFICATIONS.



Prix demandé
EUR 89 999 000



Chantier
2018, Golden Yachts, Greece



Longueur
85m



Largeur
13,8m



Tirant d'eau
3,6m



Tonnage brut
2 350



Vitesse de croisière
17 knots



Vitesse maximale
18 knots



Autonomie
10 015 nm



Pavillon
Malta



Position
East Mediterranean



Classe
Bureau Veritas



Designer extérieur
Studio Vafiadis



Designer d'intérieur
Giorgio Vafiadis



Construction
Hull - Steel, Superstructure - Aluminium, Deck - Teak



Équipage
30



Invités
23



Cabines
10 (8 x double, 2 x twin, 3 x additional berths)



Moteurs
2 x 3 386hp Caterpillar



Propulsion
Twin screw diesel yacht

[Voir le yacht sur le site](#)

[Regarder la vidéo du yacht](#)



O'PTASIA

At anchor



Aerial view



Main deck lounge



Main deck lounge



O'PTASIA

Main deck lounge



Main deck dining



Foyer



Upper deck forward owner's cabin



O'PTASIA

Upper deck forward owner's cabin



Owner's office



Owner's en suite bathroom



Main deck VIP suite



O'PTASIA

VIP en suite bathroom



Upper deck port double guest cabin



Upper deck starboard twin cabin with pullman



Main deck port double guest cabin



O'PTASIA

Main deck starboard double guest cabin



Guest en suite bathroom



Upper deck lounge



Upper deck lounge



O'PTASIA

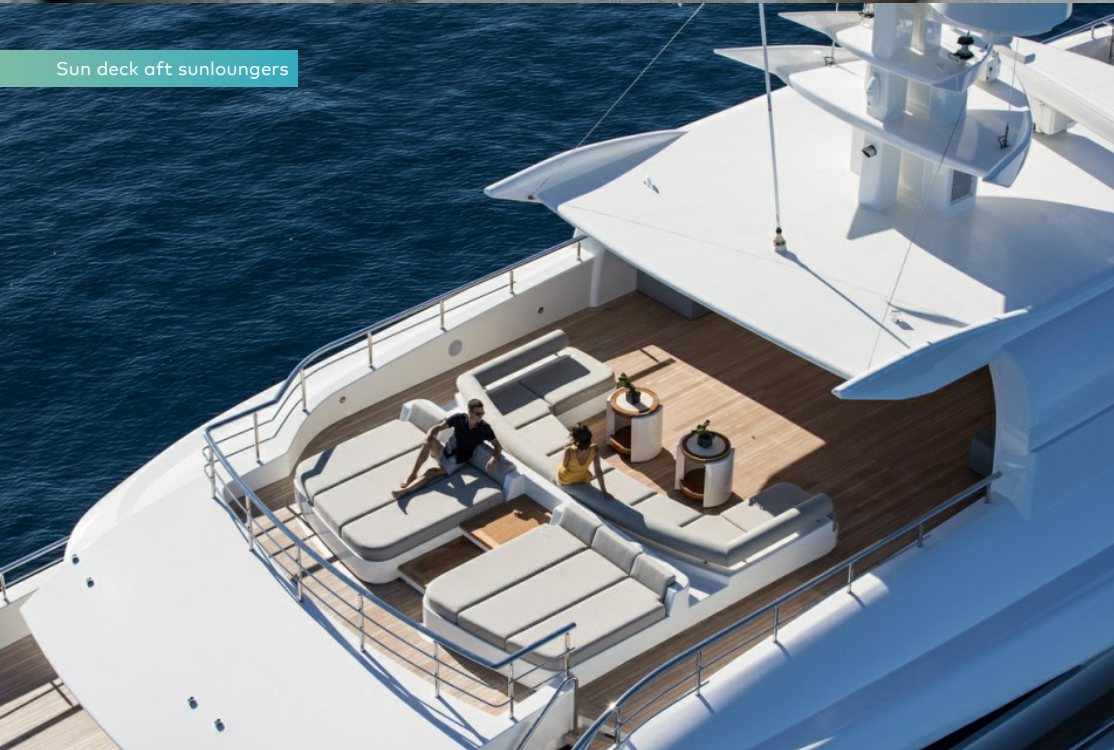
Upper deck lounge



Bridge deck gym



Sun deck aft sunloungers



Sun deck



O'PTASIA

Bridge deck aft pool and sun pads



Bridge deck aft pool



Bridge deck forward helipad



Upper deck aft lounge



O'PTASIA

Upper deck aft dining area



Upper deck aft dining area



Main deck aft seating area



Beach club



O'PTASIA

Beach club



Lower deck steam room



Beach club hydraulic ladder



Tender garage



BURGESS

Discover the difference.
burgessyachts.com



O'PTASIA

Limo tender



Limo tender



Aerial view



At anchor



BURGESS

Discover the difference.
burgessyachts.com



O'PTASIA

APERÇU.

Measuring in at a magnificent 85m (278.8ft) in length and with 2,342 gross tons of volume, O'PTASIA is one of the largest and most advanced yachts built by the Greek shipyard, Golden Yachts. Working hand in hand with Italian-based designer Giorgio Vafiadis of Studio Vafiadis, the owner, who runs a successful yacht charter fleet as well as having varied interests in commercial shipping, has created a yacht designed for active living and pure, unadulterated comfort.

Sophisticated styling plus a host of entertainment options both on and off the water make her ideal for large family gatherings or impressive entertainment. Extensive deck spaces play host to a wide range of amenities including an enormous beach club and spa/wellness centre on the lower deck, a large pool flanked by sunpads and a fully equipped gym on the bridge deck, multiple alfresco dining options, and sunbathing areas on all aft decks. A touch and go helipad is located on the foredeck for convenient access and can be converted to an observation platform or games area.

Styled as contemporary with Art Deco influences, O'PTASIA's interior features a blend of dark woods, paired with a light colour palette that evokes a sense of calm. The large, open plan main saloon hosts two seating areas and a separate dining area forward, while the upper deck saloon features a comfortable lounging area and bar.

Accommodating up to 23 guests in 10 cabins, O'PTASIA's master suite is located on the upper deck forward and offers 180-degree views from the master cabin. The upper deck also hosts two double cabins and a twin cabin. The full-beam VIP suite is located forward on the main deck with a private lounge area and his and hers walk-in wardrobes. Four more double cabins (two of which are convertible to twin cabins) and one twin cabin can also be found on this deck. A guest elevator provides access between the lower deck to the bridge deck, as does the magnificent staircase, thus allowing guests to move about with ease.

Powered by twin 3,386hp Caterpillar diesel engines, O'PTASIA has a top speed of 20 knots, a cruising speed of 16 knots and a maximum range of 10,015nm. Her zero speed stabiliser system ensures a smooth cruising experience, both underway and at anchor.

Principales caractéristiques

Designed, specified and constructed by a highly experienced multiple large yacht owner and team

Pool and outdoor cinema

Equipped with a helipad for a touch and go helicopter

Large beach club including a steam room, massage room, bar, and hydraulic ladder

Elevator serves lower to bridge decks

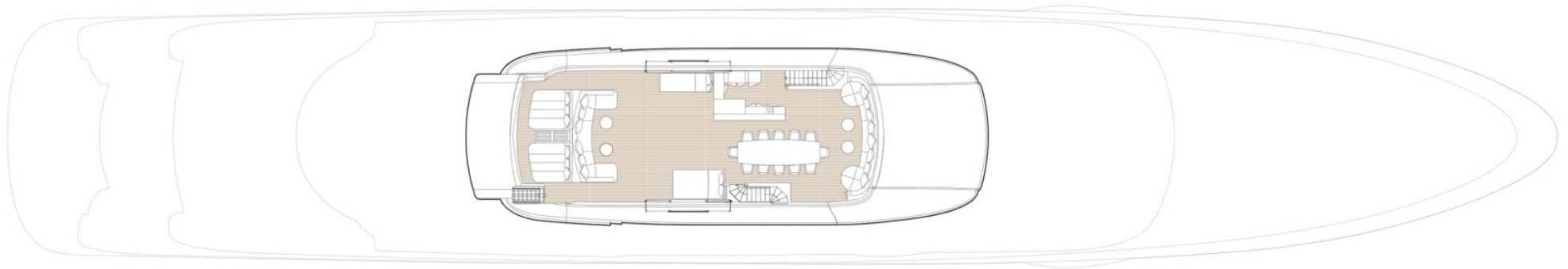
Enviably reputation on the charter market with many repeat guests

Winner of the International Superyacht Society award in the Power 65m+ category at the 29th annual Design & Leadership Award Gala 2019

Annexes

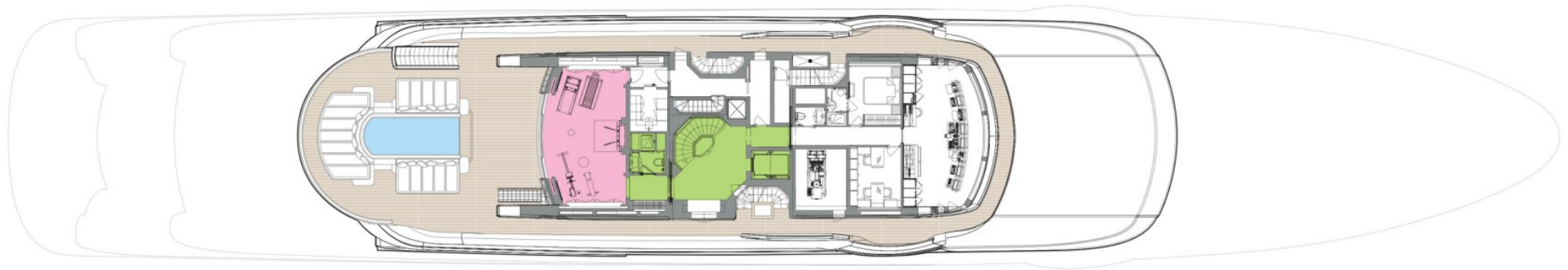
1 x custom Limo tender, LOA 9.75m, with 2 x Volvo Penta D3, 440HP engines. 1 x Chris Craft launch 27, LOA 8.13m, with Mercury V8 6.2L, 1 x Novurania catamaran 20, LOA 6m with Yamaha diesel outboard engine 115hp, 1 x Avon 4.40m tender with Yamaha outboard engine 60HP, 1 x Zodiac SOLAS 450 rescue boat with Yamaha outboard engine F25g SOLAS

FLYBRIDGE



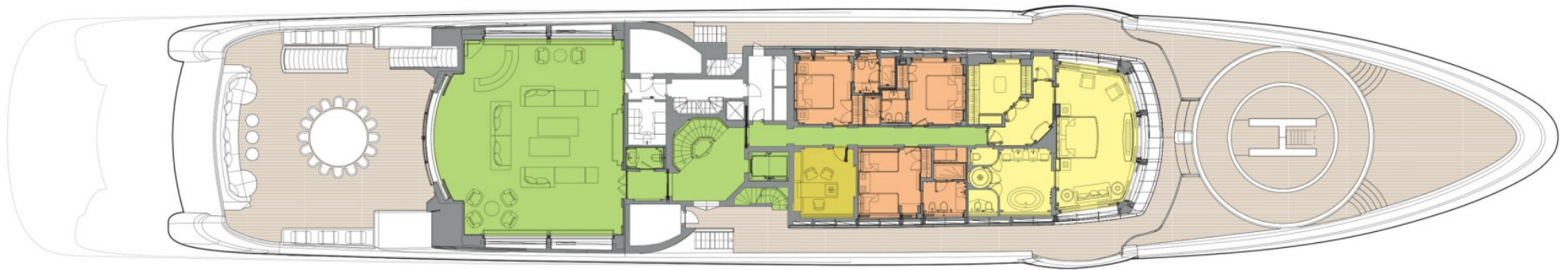
- GUEST AREAS
- OWNER'S SUITE
- VIP SUITE
- GUEST CABINS
- OWNER'S OFFICE
- HOSPITAL
- GYM
- MASSAGE SUITE
- HAMMAM
- POOL

BRIDGE DECK



- GUEST AREAS
- OWNER'S SUITE
- VIP SUITE
- GUEST CABINS
- OWNER'S OFFICE
- HOSPITAL
- GYM
- MASSAGE SUITE
- HAMMAM
- POOL

UPPER DECK



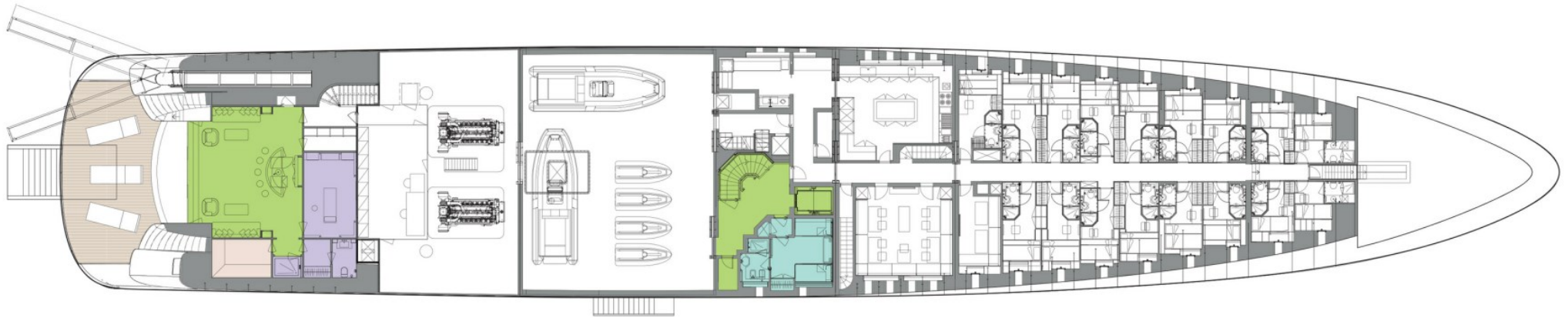
- GUEST AREAS
- OWNER'S SUITE
- VIP SUITE
- GUEST CABINS
- OWNER'S OFFICE
- HOSPITAL
- GYM
- MASSAGE SUITE
- HAMMAM
- POOL

MAIN DECK



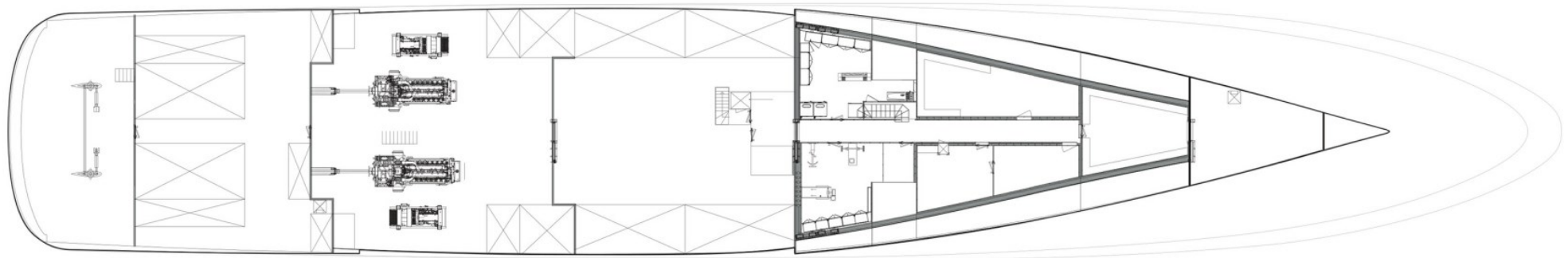
- GUEST AREAS
- OWNER'S SUITE
- VIP SUITE
- GUEST CABINS
- OWNER'S OFFICE
- HOSPITAL
- GYM
- MASSAGE SUITE
- HAMMAM
- POOL

LOWER DECK



- GUEST AREAS
- OWNER'S SUITE
- VIP SUITE
- GUEST CABINS
- OWNER'S OFFICE
- HOSPITAL
- GYM
- MASSAGE SUITE
- HAMMAM
- POOL

TANK DECK



BURGESS

WORLD CLASS. WORLD WIDE.

London	Monaco	New York	Miami	Singapore	Beverly Hills	Palma	Athens
+44 20 7766 4300	+377 97 97 81 21	+1 212 223 0410	+1 305 672 0150	+65 9665 8990	+1 310 424 5112	+34 971 495 413	+30 210 967 1661
Dubai	Phuket	Hong Kong	Tokyo	Sydney	Mumbai	Shanghai	
+971 4 425 5874	+66 7623 9739	+852 6496 2094	+81 46 738 8612	+61 499 945 557	+91 98211 67253	+86 187 0898 6800	

La publicité de ce(s) navire(s) dans des publications imprimées, sur Internet ou sur tout autre support n'est pas autorisée sans l'autorisation écrite préalable de Burgess.
Toutes les informations sont données de bonne foi et sont considérées comme exactes, mais elles ne peuvent être garanties.

Dernière mise à jour : 16 avril 2024