

O'PTASIA



O'PTASIA

SPECIFICATION.



Asking price
EUR 89,999,000



Built
2018, Golden Yachts, Greece



Length
85m (278.8ft)



Beam
13.8m (45.3ft)



Draft
3.6m (11.8ft)



Gross tonnage
2,350



Cruising speed
17 knots



Maximum speed
18 knots



Range
10,015 nm



Flag
Malta



Lying
East Mediterranean



Class
Bureau Veritas



Exterior designer
Studio Vafiadis



Interior designer
Giorgio Vafiadis



Construction
Hull - Steel, Superstructure - Aluminium, Deck - Teak



Crew
30



Guests
23



Cabins
10 (8 x double, 2 x twin, 3 x additional berths)



Engines
2 x 3,386hp Caterpillar



Propulsion
Twin screw diesel yacht

[View yacht on website](#)

[Watch yacht video](#)



O'PTASIA

At anchor



Aerial view



Main deck lounge



Main deck lounge



O'PTASIA

Main deck lounge



Main deck dining



Foyer



Upper deck forward owner's cabin



O'PTASIA

Upper deck forward owner's cabin



Owner's office



Owner's en suite bathroom



Main deck VIP suite



O'PTASIA

VIP en suite bathroom



Upper deck port double guest cabin



Upper deck starboard twin cabin with pullman



Main deck port double guest cabin



O'PTASIA

Main deck starboard double guest cabin



Guest en suite bathroom



Upper deck lounge



Upper deck lounge



O'PTASIA

Upper deck lounge



Bridge deck gym



Sun deck aft sunloungers



Sun deck



O'PTASIA

Bridge deck aft pool and sun pads



Bridge deck aft pool



Bridge deck forward helipad



Upper deck aft lounge



O'PTASIA

Upper deck aft dining area



Upper deck aft dining area



Main deck aft seating area



Beach club



BURGESS

Discover the difference.
burgessyachts.com



O'PTASIA

Beach club



Lower deck steam room



Beach club hydraulic ladder



Tender garage



BURGESS

Discover the difference.
burgessyachts.com



O'PTASIA

Limo tender



Limo tender



Aerial view



At anchor



BURGESS

Discover the difference.
burgessyachts.com



OVERVIEW.

Measuring in at a magnificent 85m (278.8ft) in length and with 2,342 gross tons of volume, O'PTASIA is one of the largest and most advanced yachts built by the Greek shipyard, Golden Yachts. Working hand in hand with Italian-based designer Giorgio Vafiadis of Studio Vafiadis, the owner, who runs a successful yacht charter fleet as well as having varied interests in commercial shipping, has created a yacht designed for active living and pure, unadulterated comfort.

Sophisticated styling plus a host of entertainment options both on and off the water make her ideal for large family gatherings or impressive entertainment. Extensive deck spaces play host to a wide range of amenities including an enormous beach club and spa/wellness centre on the lower deck, a large pool flanked by sunpads and a fully equipped gym on the bridge deck, multiple alfresco dining options, and sunbathing areas on all aft decks. A touch and go helipad is located on the foredeck for convenient access and can be converted to an observation platform or games area.

Styled as contemporary with Art Deco influences, O'PTASIA's interior features a blend of dark woods, paired with a light colour palette that evokes a sense of calm. The large, open plan main saloon hosts two seating areas and a separate dining area forward, while the upper deck saloon features a comfortable lounging area and bar.

Accommodating up to 23 guests in 10 cabins, O'PTASIA's master suite is located on the upper deck forward and offers 180-degree views from the master cabin. The upper deck also hosts two double cabins and a twin cabin. The full-beam VIP suite is located forward on the main deck with a private lounge area and his and hers walk-in wardrobes. Four more double cabins (two of which are convertible to twin cabins) and one twin cabin can also be found on this deck. A guest elevator provides access between the lower deck to the bridge deck, as does the magnificent staircase, thus allowing guests to move about with ease.

Powered by twin 3,386hp Caterpillar diesel engines, O'PTASIA has a top speed of 20 knots, a cruising speed of 16 knots and a maximum range of 10,015nm. Her zero speed stabiliser system ensures a smooth cruising experience, both underway and at anchor.

Key features

Designed, specified and constructed by a highly experienced multiple large yacht owner and team

Pool and outdoor cinema

Equipped with a helipad for a touch and go helicopter

Large beach club including a steam room, massage room, bar, and hydraulic ladder

Elevator serves lower to bridge decks

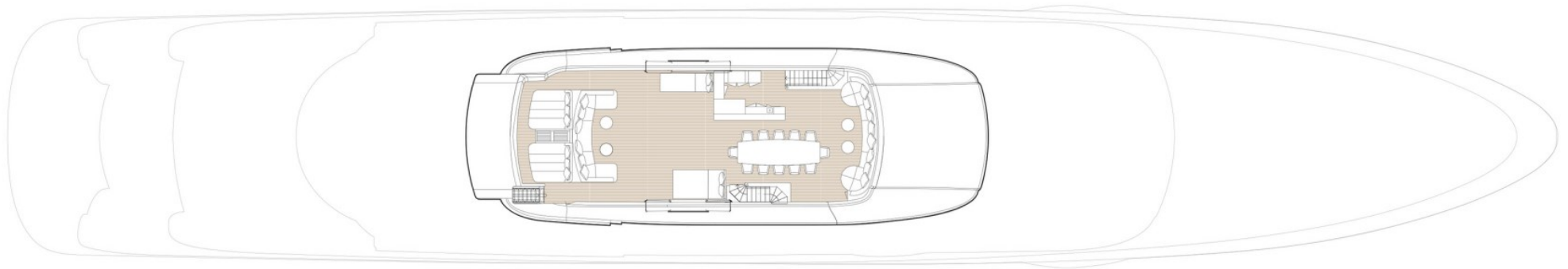
Enviably reputation on the charter market with many repeat guests

Winner of the International Superyacht Society award in the Power 65m+ category at the 29th annual Design & Leadership Award Gala 2019

Tenders

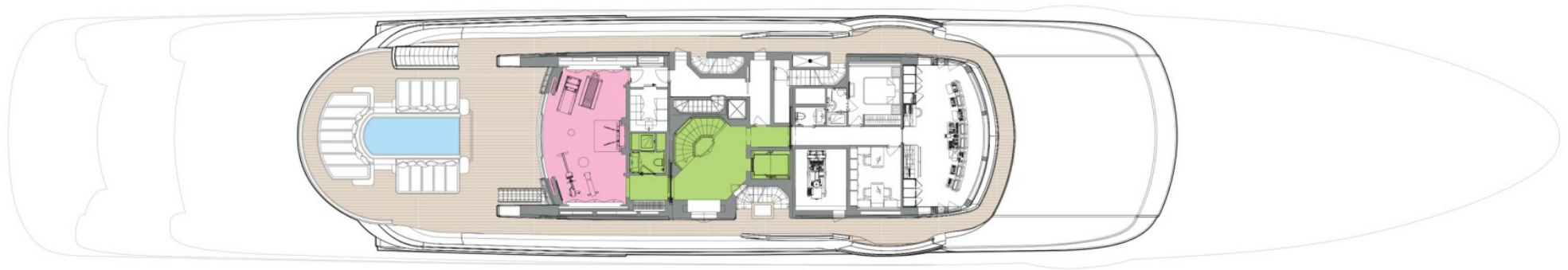
1 x custom Limo tender, LOA 9.75m, with 2 x Volvo Penta D3, 440HP engines. 1 x Chris Craft launch 27, LOA 8.13m, with Mercury V8 6.2L, 1 x Novurania catamaran 20, LOA 6m with Yamaha diesel outboard engine 115hp, 1 x Avon 4.40m tender with Yamaha outboard engine 60HP, 1 x Zodiac SOLAS 450 rescue boat with Yamaha outboard engine F25g SOLAS

FLYBRIDGE



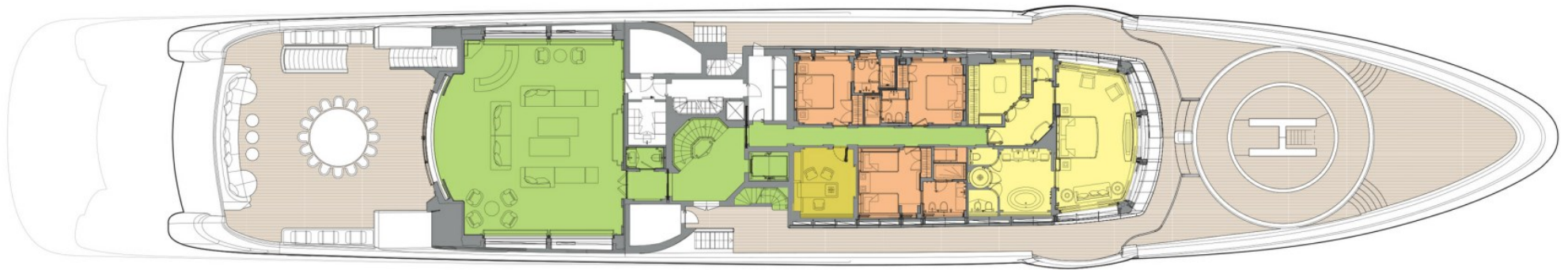
- GUEST AREAS
- OWNER'S SUITE
- VIP SUITE
- GUEST CABINS
- OWNER'S OFFICE
- HOSPITAL
- GYM
- MASSAGE SUITE
- HAMMAM
- POOL

BRIDGE DECK



- GUEST AREAS
- OWNER'S SUITE
- VIP SUITE
- GUEST CABINS
- OWNER'S OFFICE
- HOSPITAL
- GYM
- MASSAGE SUITE
- HAMMAM
- POOL

UPPER DECK



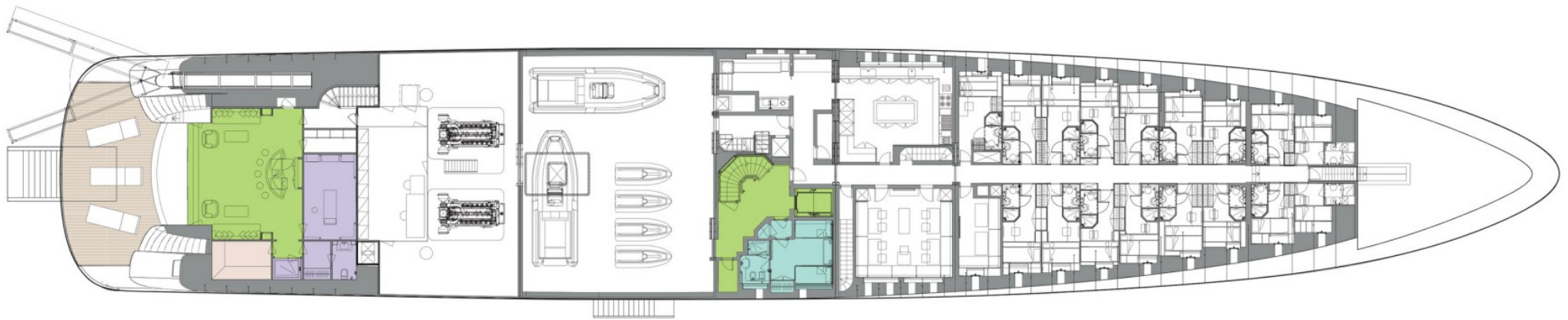
- GUEST AREAS
- OWNER'S SUITE
- VIP SUITE
- GUEST CABINS
- OWNER'S OFFICE
- HOSPITAL
- GYM
- MASSAGE SUITE
- HAMMAM
- POOL

MAIN DECK



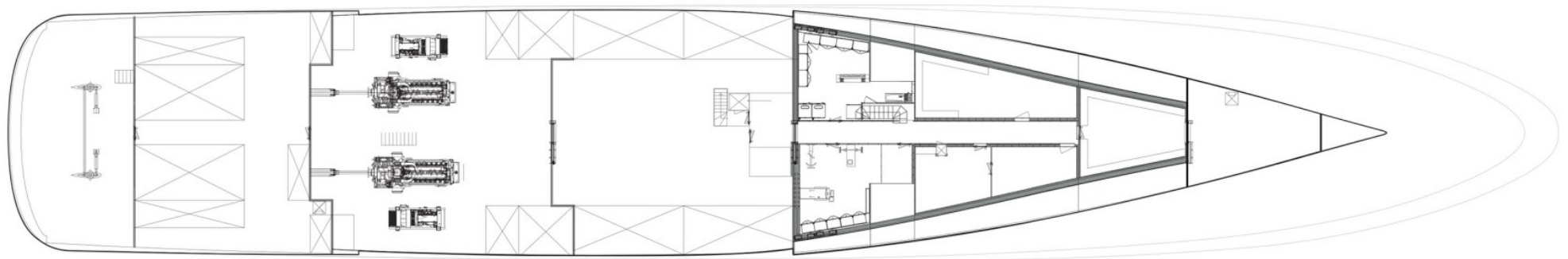
- GUEST AREAS
- OWNER'S SUITE
- VIP SUITE
- GUEST CABINS
- OWNER'S OFFICE
- HOSPITAL
- GYM
- MASSAGE SUITE
- HAMMAM
- POOL

LOWER DECK



- GUEST AREAS
- OWNER'S SUITE
- VIP SUITE
- GUEST CABINS
- OWNER'S OFFICE
- HOSPITAL
- GYM
- MASSAGE SUITE
- HAMMAM
- POOL

TANK DECK



- GUEST AREAS
- OWNER'S SUITE
- VIP SUITE
- GUEST CABINS
- OWNER'S OFFICE
- HOSPITAL
- GYM
- MASSAGE SUITE
- HAMMAM
- POOL

BURGESS

WORLD CLASS.
WORLD WIDE.

London +44 20 7766 4300	Monaco +377 97 97 81 21	New York +1 212 223 0410	Miami +1 305 672 0150	Singapore +65 9665 8990	Beverly Hills +1 310 424 5112	Palma +34 971 495 413	Athens +30 210 967 1661
Dubai +971 4 425 5874	Phuket +66 7623 9739	Hong Kong +852 6496 2094	Tokyo +81 46 738 8612	Sydney +61 499 945 557	Mumbai +91 98211 67253	Shanghai +86 187 0898 6800	

Advertising of these vessel(s) in printed publications, on the internet or in any other medium is not permitted without prior written permission from Burgess. All particulars are given in good faith and are believed correct but they cannot be guaranteed.

Last updated: 16 April 2024