

# O'PTASIA

---



O'PTASIA

# APERÇU.

O'PTASIA is the perfect match for the discerning modern charterer looking for entertainment, activities and flexibility in accommodation. Built in 2018, this award-winning yacht offers an abundance of wellness amenities, a vast choice of outdoor lounging and dining options, and a world-class inventory of watertoys.

Wake to panoramic views in the master suite and head down to the 'beach house' for some early morning indulgence. How about a fresh juice and massage by the gently lapping water, followed by a stint in the steam room? Meanwhile, everyone has gathered in the main deck lounge for a delicious breakfast. O'PTASIA's interior design is masculine yet warm, with soft greys, browns and creams accented by colourful modern art.

If you fancy a bird's eye view of the area, take a helicopter trip straight off the bow to a historical site or local vineyard. Alternatively, visit the bridge deck's gym for a workout before enjoying a leisurely morning in the pool, with its surrounding sun pads offering stunning views of the anchorage.

A BBQ lunch is served at the sun deck's shaded table, with the crew providing freshly made cocktails at the bar. With everyone re-energised, it is time to hit the water, and O'PTASIA has an impressive range of toys. Jetskis, jetsurfs, wakeboards, SeaBobs, dinghies, inflatables; you name it, they have it. For children and less mobile guests, the hydraulic swim ladder is handy for easy water access. Or those who want some quiet time can make their way to the sky lounge for a movie on the state of the art entertainment system.

Afternoon tea is served on main deck aft, with its comfortable sofas easily fitting everyone to share tales of the day's fun so far, and then it is time to change for dinner. O'PTASIA has a very flexible arrangement of 10 well-appointed guest cabins for 12, including eight doubles and two twins, located on the desirable main and upper decks, with a further twin available for staff. The master suite features a large walk in wardrobe and private office, while the VIP suite has a walk in wardrobe and adjoining cinema. All of the guest cabins feel spacious and they all benefit from fantastic views through large windows.

As evening draws in, enjoy an atmospheric sundowner at the bar of the 'beach house' by the water's edge, followed by a delicious al fresco dinner on the upper deck and a magical, intimate film screening under the stars with blankets on the sun deck.

## Principales caractéristiques

Winner of the prestigious International Superyacht Society (ISS) award in the Power 65 m+ category at the 29th annual Design & Leadership Award Gala 2019

---

Hydraulic ladder

---

Spa facilities: steam room, massage room

---

Beach club at sea level

---

A fully equipped gym

---

Touch and go helipad

---

10m custom limo tender

---

Two master cabins

---

An elevator serving main to bridge decks

---

Jacuzzi on the bridge deck

---

Zero speed stabilisers to reduce any rolling motion while at anchor

---

O'PTASIA

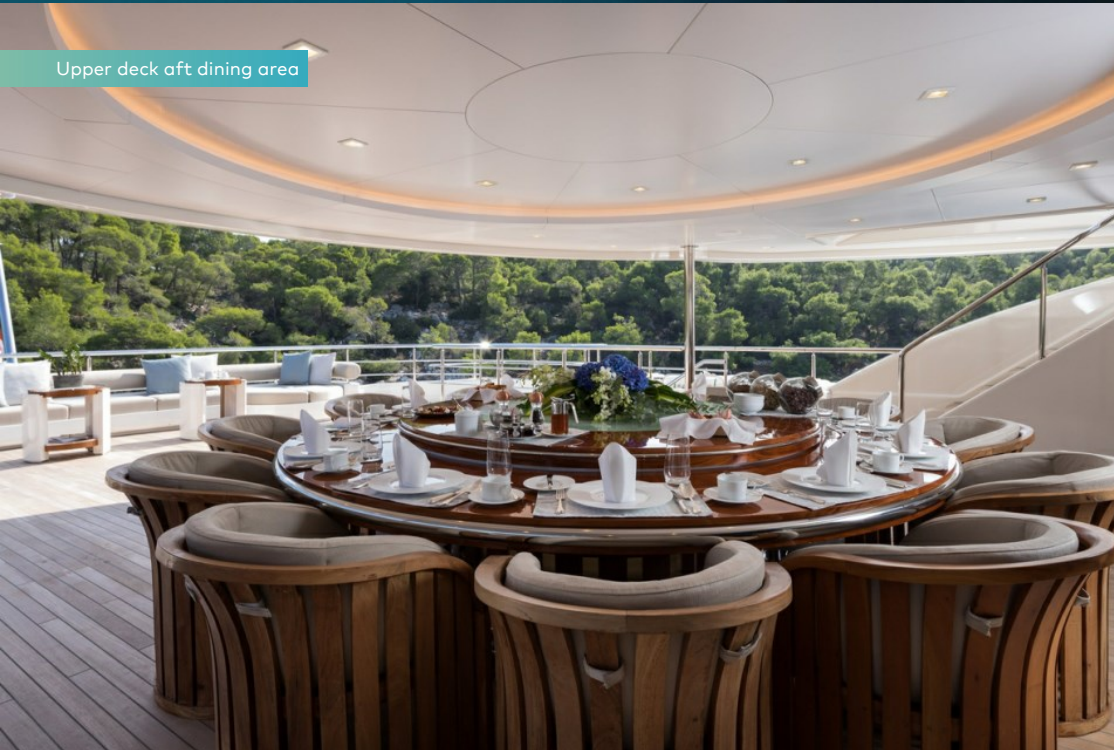
Hydraulic ladder



Bridge deck aft pool and sun pads



Upper deck aft dining area



Main deck aft seating area



# O'PTASIA

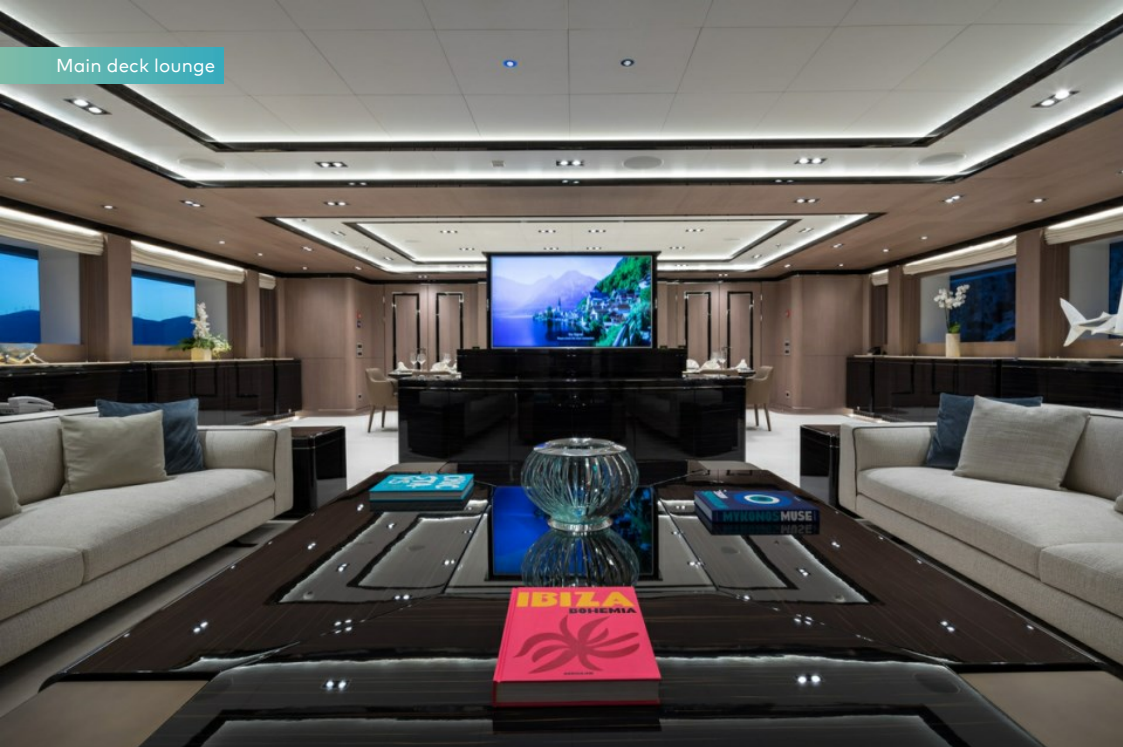
Beach club



Beach club



Main deck lounge



Upper deck lounge



# O'PTASIA

Upper deck forward owner's cabin



Upper deck owner's office



Owner's en suite bathroom



Upper deck port double guest cabin



# O'PTASIA

Upper deck starboard twin cabin with pullman



Foyer



Main deck VIP suite



Main deck VIP bathroom



# O'PTASIA

Main deck port double guest cabin



Main deck starboard double cabin



Guest bathroom en suite



Guest bathroom en suite



O'PTASIA

Hallway



Bridge deck gym



Lower deck massage room



Limo tender





O'PTASIA

Limo tender



At anchor



# O'PTASIA

# SPÉCIFICATIONS.



Longueur  
85m



Chantier  
2018, Golden Yachts, Greece



Designer d'intérieur  
Giorgio Vafiadis



Largeur  
13,8m



Tirant d'eau  
3,6m



Tonnage brut  
2 350



Vitesse de croisière  
17 knots



Vitesse maximale  
18 knots



Consommation de carburant en vitesse de croisière  
880 litres par heure



Moteurs  
2 x 3 386hp Caterpillar



Invités  
12



Nb de cabines invités  
10 (8 x double, 2 x twin, 3 x additional berths)



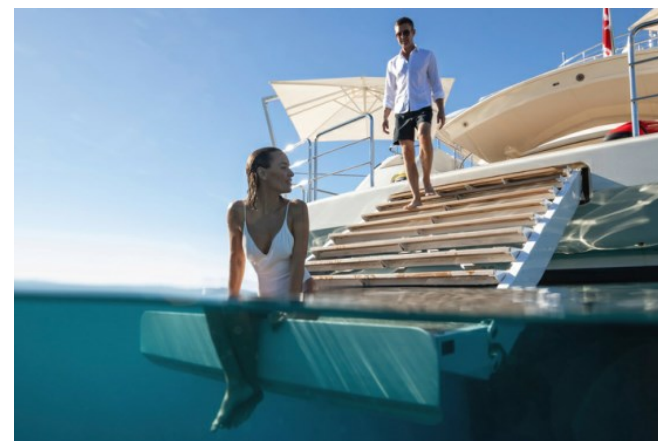
Équipage  
29

## Note

Fully licensed for charters in Greek waters.

[Voir le yacht sur le site](#)

[Regarder la vidéo du yacht](#)



## Annexes & jeux nautiques

---



1 x Limousine tender



3 x Tenders



1 x Deck jacuzzi



Anti-jellyfish pool



Trampoline



Aquapark



3 x Waverunners



4 x SeaBobs



2 x Jetsurfs



3 x Kayaks



2 x Stand up paddleboards



Pedal board



Wakeboard



Kneeboard



Waterskis



Inflatable tows



Snorkelling gear

# Remise en forme & bien-être



Exercise balls



Free weights



Multi gym



Rowing machine



Suspension trainer



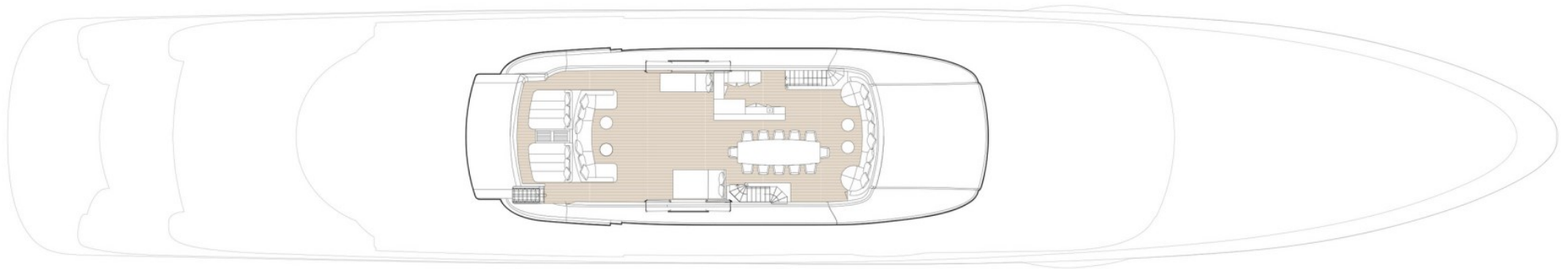
Training bench



Treadmill

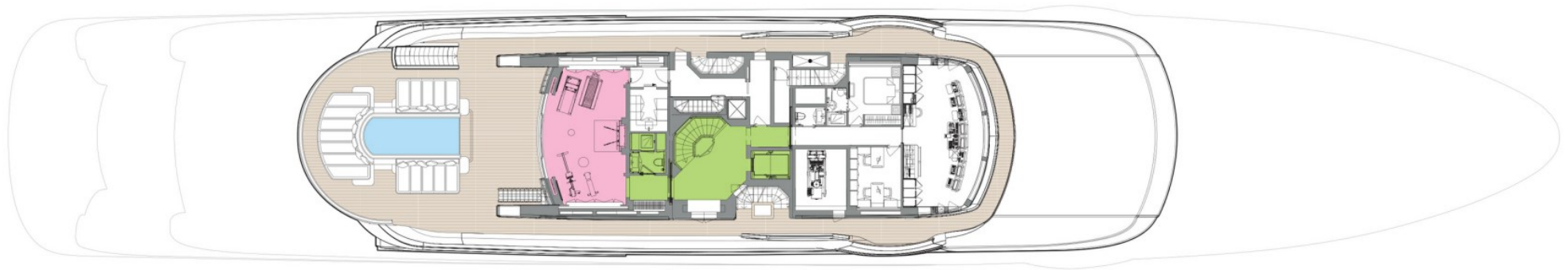


# FLYBRIDGE



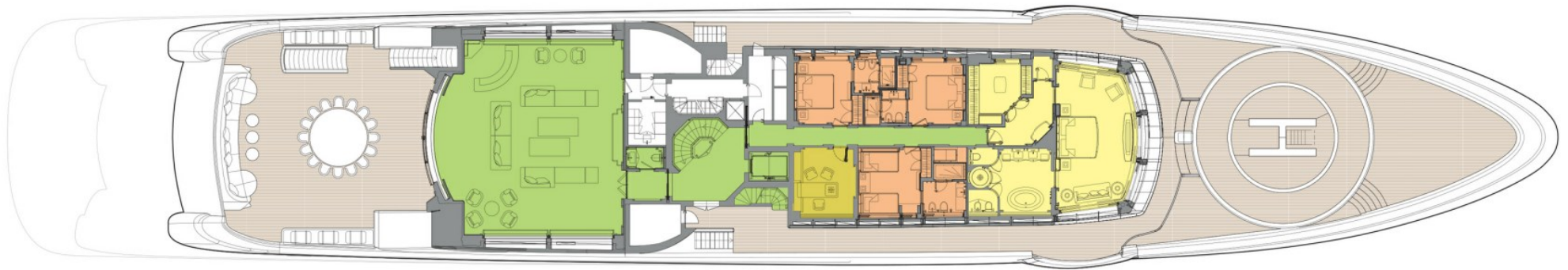
- GUEST AREAS
- OWNER'S SUITE
- VIP SUITE
- GUEST CABINS
- OWNER'S OFFICE
- HOSPITAL
- GYM
- MASSAGE SUITE
- HAMMAM
- POOL

# BRIDGE DECK



- GUEST AREAS
- OWNER'S SUITE
- VIP SUITE
- GUEST CABINS
- OWNER'S OFFICE
- HOSPITAL
- GYM
- MASSAGE SUITE
- HAMMAM
- POOL

# UPPER DECK



- GUEST AREAS
- OWNER'S SUITE
- VIP SUITE
- GUEST CABINS
- OWNER'S OFFICE
- HOSPITAL
- GYM
- MASSAGE SUITE
- HAMMAM
- POOL

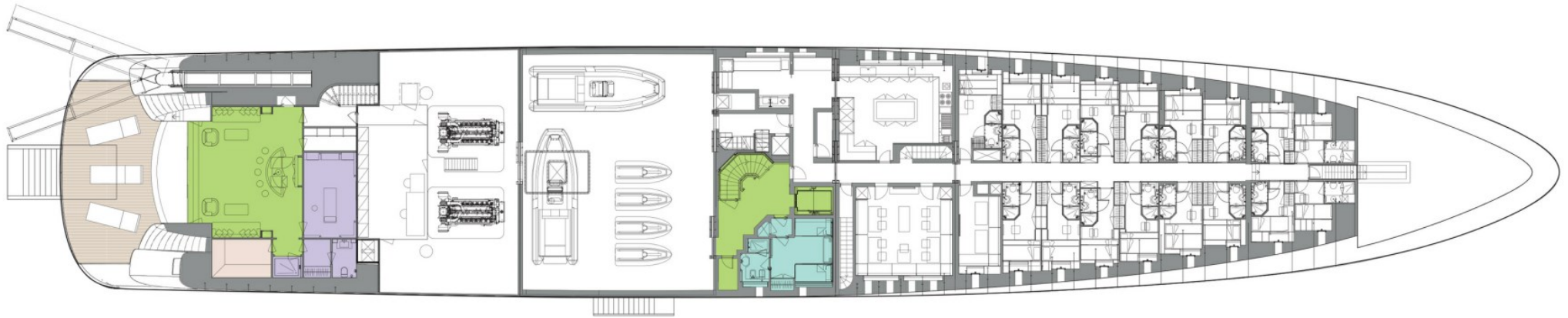
# MAIN DECK



- GUEST AREAS
- OWNER'S SUITE
- VIP SUITE
- GUEST CABINS
- OWNER'S OFFICE
- HOSPITAL
- GYM
- MASSAGE SUITE
- HAMMAM
- POOL

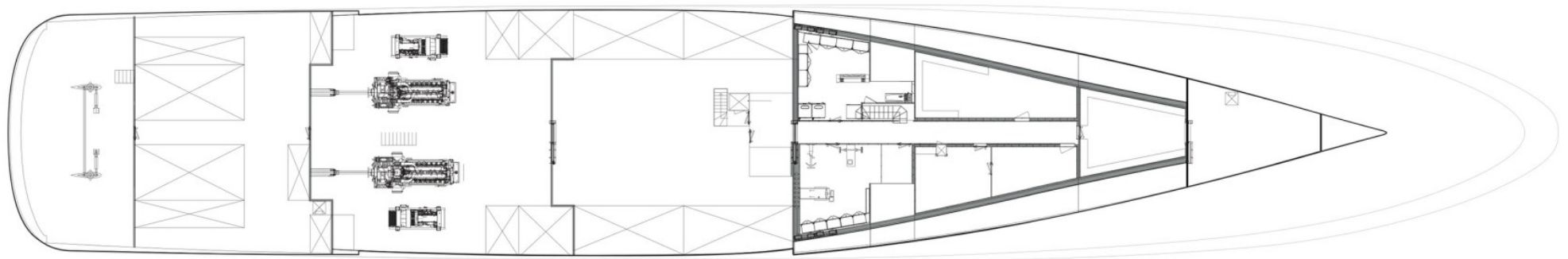


# LOWER DECK



- GUEST AREAS
- OWNER'S SUITE
- VIP SUITE
- GUEST CABINS
- OWNER'S OFFICE
- HOSPITAL
- GYM
- MASSAGE SUITE
- HAMMAM
- POOL

# TANK DECK



- GUEST AREAS
- OWNER'S SUITE
- VIP SUITE
- GUEST CABINS
- OWNER'S OFFICE
- HOSPITAL
- GYM
- MASSAGE SUITE
- HAMMAM
- POOL

BURGESS

WORLD CLASS.  
WORLD WIDE.

London	Monaco	New York	Miami	Singapore	Beverly Hills	Palma	Athens
+44 20 7766 4300	+377 97 97 81 21	+1 212 223 0410	+1 305 672 0150	+65 9665 8990	+1 310 424 5112	+34 971 495 413	+30 210 967 1661
Dubai	Phuket	Hong Kong	Tokyo	Sydney	Mumbai	Shanghai	
+971 4 425 5874	+66 7623 9739	+852 6496 2094	+81 46 738 8612	+61 499 945 557	+91 98211 67253	+86 187 0898 6800	

La publicité de ce(s) navire(s) dans des publications imprimées, sur Internet ou sur tout autre support n'est pas autorisée sans l'autorisation écrite préalable de Burgess.  
Toutes les informations sont données de bonne foi et sont considérées comme exactes, mais elles ne peuvent être garanties.

Dernière mise à jour : 16 avril 2024