

NORTHERN SUN



NORTHERN SUN

SPÉCIFICATIONS.



Prix demandé
USD 15 000 000



Chantier
1976 (rebuilt 2007, refitted 2022), Narasaki Shipyard, Japan



Longueur
50,9m



Largeur
9m



Tirant d'eau
5m



Tonnage brut
703



Vitesse de croisière
10 knots



Vitesse maximale
12 knots



Autonomie
10 000 nm



Pavillon
Cook Islands



Position
Australasia



Classe
Japanese Government



Designer extérieur
HYS Yachts



Designer d'intérieur
HYS Yachts



Construction
Hull - Steel, Superstructure - Steel, Deck - Teak



Équipage
13



Invités
12



Cabines
6 (4 × double, 2 × twin)



Moteurs
2 × 900hp Yanmar



Propulsion
Single screw diesel yacht

[Voir le yacht sur le site](#)

[Regarder la vidéo du yacht](#)



NORTHERN SUN

Aerial view



Main deck aft lounge



Main deck midship lounge



Main deck forward games room and piano



BURGESS

Discover the difference.
burgessyachts.com



NORTHERN SUN

Lower deck port dining room



Lower deck starboard library



Lower deck forward master cabin



Lower deck forward master bathroom



NORTHERN SUN

Lower deck aft guest double cabin



Lower deck aft guest bathroom



Lower deck aft guest twin cabin



Lower deck aft guest twin cabin



NORTHERN SUN

APERÇU.

The 50.9m (167ft) NORTHERN SUN is a long-range displacement expedition vessel. Previously known as the Japanese ice-class marine research vessel HOKKO MARU, launched in 1976 by the Japanese shipyard Narasaki Shipbuilding, she underwent a complete conversion from 2005 to 2008, transforming her into a luxury superyacht.

NORTHERN SUN's impressive leisure and entertainment facilities make her the ideal yacht for socializing and entertaining with family and friends. Built with a steel hull and aluminum superstructure, she features an ultra-modern stabilization system to reduce roll motion effect and ensure the ultimate comfort throughout your voyage. NORTHERN SUN can accommodate up to 12 guests in six well-appointed staterooms, including three doubles and three twins.

Her main deck has direct access to the salon and boasts a massive partially shaded aft area, ideal for relaxing or entertaining, alfresco dining option, followed by central access steps to the extended swim platform.

NORTHERN SUN has benefited from numerous upgrades and refits, most recently in 2015, 2018 and 2019 which saw improvements to her interior and technical areas.

Truly a worldwide cruising expedition yacht, NORTHERN SUN's twin 900hp Yanmar diesel engines give her speeds a cruising speed of 10.5 knots with a transpacific range of 10,000nm. She has a maximum speed of 13 knots.

Principales caractéristiques

Transoceanic range of 10,000nm

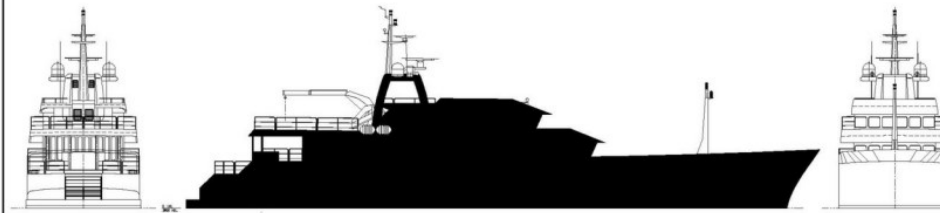
Originally built as marine research vessel

Recent refit including repaint, new emergency generator, soundproofing and more

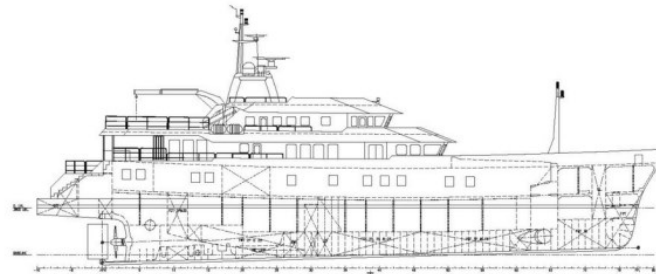
ICE classed

Accommodation for 12 guests in six cabins

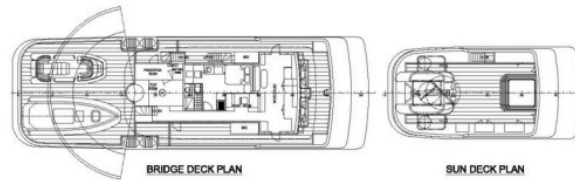
GENERAL ARRANGEMENT OF M.Y. "NORTHERN SUN"



PROFILE VIEW

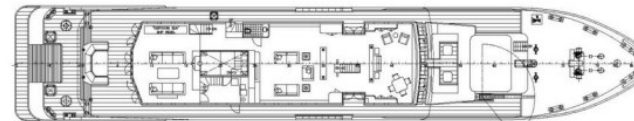


PROFILE VIEW



BRIDGE DECK PLAN

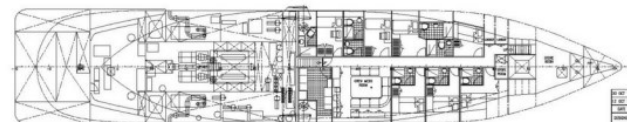
SUN DECK PLAN



MAIN DECK PLAN



GUEST DECK PLAN



CREW DECK PLAN

[illegible][illegible]

THIS DOCUMENT AND THE INFORMATION IT CONTAINS IS COPYRIGHT AND REMAINS THE PROPERTY OF L. Y. CHAN PTE. LTD.
IT IS NOT TO BE COPIED IN WHOLE OR IN PART OR DISCLOSED TO ANY THIRD PARTY FOR ANY PURPOSES WITHOUT WRITTEN PERMISSION FROM L. Y. CHAN PTE. LTD.

BURGESS

WORLD CLASS. WORLD WIDE.

London +44 20 7766 4300	Monaco +377 97 97 81 21	New York +1 212 223 0410	Miami +1 305 672 0150	Singapore +65 9665 8990	Beverly Hills +1 310 424 5112	Palma +34 971 495 413	Athens +30 210 967 1661
	Dubai +971 4 425 5874	Phuket +66 7623 9739	Hong Kong +852 6496 2094	Tokyo +81 46 738 8612	Sydney +61 499 945 557	Mumbai +91 98211 67253	

La publicité de ce(s) navire(s) dans des publications imprimées, sur Internet ou sur tout autre support n'est pas autorisée sans l'autorisation écrite préalable de Burgess.
Toutes les informations sont données de bonne foi et sont considérées comme exactes, mais elles ne peuvent être garanties.

Dernière mise à jour : 01 mars 2024