

NITA K II



NITA K II

SPECIFICATION.



Asking price
USD 22,500,000



Built
2004 (refitted 2024), Amels, The Netherlands



Length
52m (171ft)



Beam
9m (29.8ft)



Draft
3.1m (10.2ft)



Gross tonnage
628



Cruising speed
12.5 knots



Maximum speed
15 knots



Range
5,000 nm



Flag
Jamaica



Lying
USA



Class
Lloyd's Register (LR) MCA Compliant



Exterior designer
Terence Disdale



Interior designer
Alberto Pinto



Construction
Hull - Steel, Superstructure - Aluminium, Deck - Teak



Crew
13



Guests
12



Cabins
5 (5 × double, 2 × additional berths)



Engines
2 × 1,200hp Cummins



Propulsion
Twin screw diesel yacht

Note

Not available for sale to US residents while in US waters.

[View yacht on website](#)

[Watch yacht video](#)



NITA K II

Cruising



Cruising



Main deck lounge



Main deck lounge



NITA K II

Main deck dining area



Main deck dining area



Master cabin lounge and office



Master cabin lounge and office



NITA K II

Master cabin



Master cabin en suite



Master cabin walk-in closet



Lower deck guest foyer



NITA K II

Lower deck double cabin



Lower deck double cabin en suite



Lower deck double cabin with pullman



Lower deck double cabin en suite



NITA K II

Lower deck double cabin



Lower deck double cabin en suite



Lower deck double cabin



Bridge



NITA K II

Sky lounge



Sky lounge



Sky lounge



Sky lounge



NITA K II

Sun deck aft



Sun deck jacuzzi



Upper deck aft



Upper deck aft



NITA K II

Upper deck aft



Main deck aft



Cruising



BURGESS

Discover the difference.
burgessyachts.com



NITA K II

OVERVIEW.

The elegant 52m (170.6ft) NITA K II is a Dutch pedigree superyacht launched by Amels in 2004. This stunning vessel features meticulously crafted interiors by Alberto Pinto and Laura Sessa, paired with an exterior design by the renowned Terence Disdale. Constructed with a steel hull and aluminum superstructure, NITA K II boasts an impressive volume of 628GT. Since her debut, she has proven to be a versatile yacht, appealing to seasoned yachtsmen for both private use and a successful charter program. NITA K II presents in turn-key condition, having been meticulously maintained by her experienced crew and undergoing numerous refits most recently in 2024.

NITA K II comfortably accommodates up to 12 guests in five luxurious cabins. The full-beam master cabin on the main deck features his-and-hers en suites, walk-in wardrobes, and an adjoining office offering a private work space. On the lower deck, four spacious guest cabins with king beds can be found including two VIP suites equipped with jet tubs and oversized showers, along with two pullman bunks. Her main deck lounge and sky lounge are comfortable spaces flooded with natural light from her large windows on either side.

In addition to her stunning interior, NITA K II offers generous exterior deck spaces, including a large sun deck with a jacuzzi and sun pads, a fully equipped bar under a hardtop, and an expansive sun lounge at the rear. The upper deck aft features open-air dining and lounging, while the main deck aft includes a spacious lounge area. The exterior layout is perfect for guest entertainment and relaxation, allowing everyone on board to enjoy their time together.

Powered by twin 1,200hp Cummins diesel engines, NITA K II cruises comfortably at 12.5 knots and can reach a maximum speed of 15 knots. With a transatlantic range of 5,000 nautical miles at economical speed, she is equipped with zero-speed stabilizers, ensuring unparalleled comfort for guests both at anchor and underway.

Key features

Accommodations for 12 guests in 5 well-appointed cabins

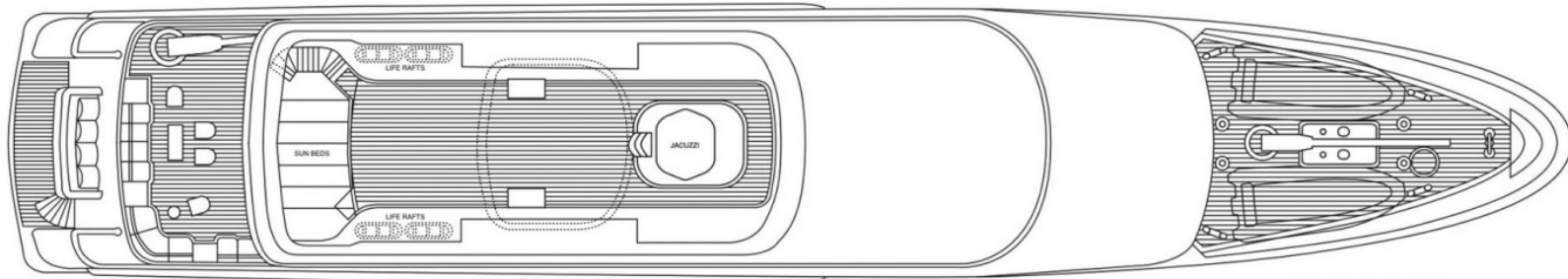
At anchor stabilization

Extensive refit and 20-year Lloyd's survey completed in 2024

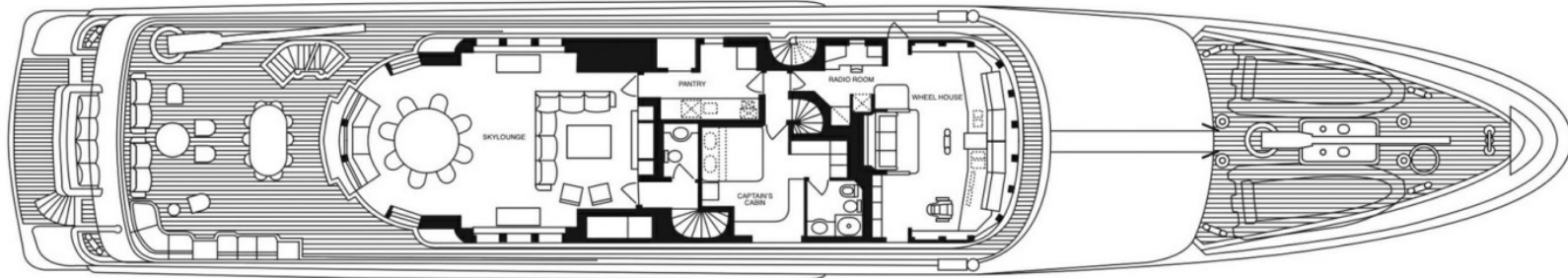
Stunning interior design by Alberto Pinto and Laura Sessa

Exceptional exterior design by Terence Disdale

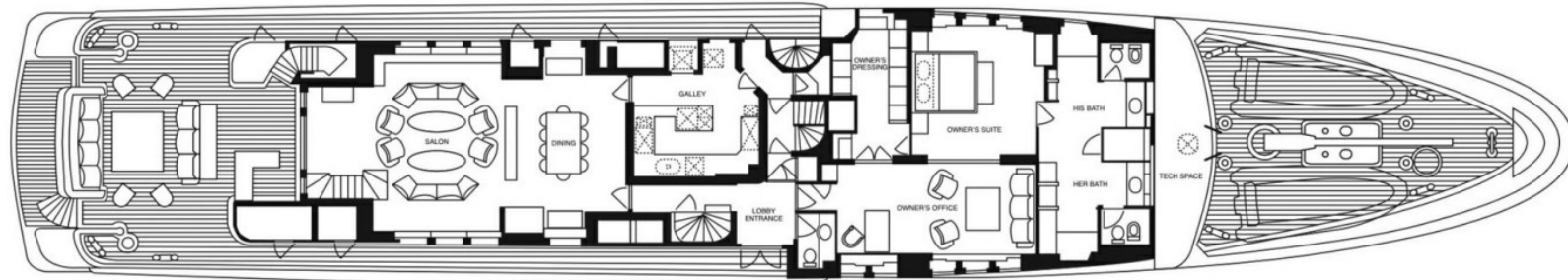
Sun deck jacuzzi



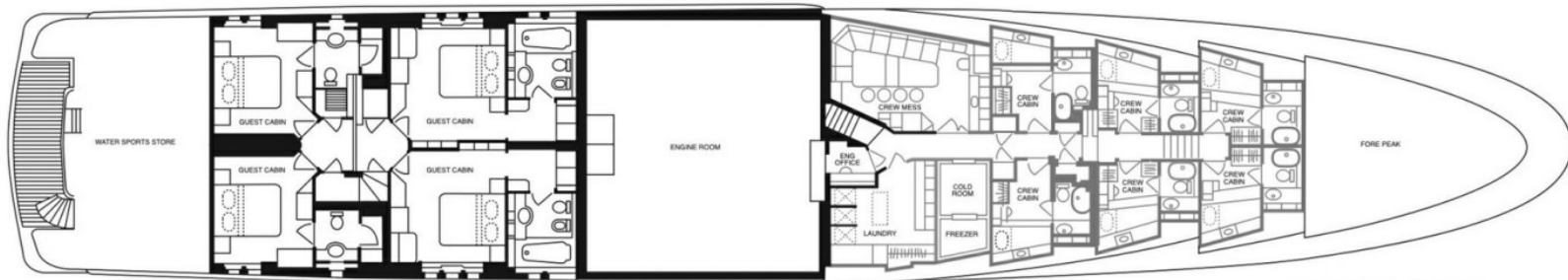
SUN DECK



BRIDGE DECK



MAIN DECK



LOWER DECK

BURGESS

WORLD CLASS. WORLD WIDE.

London +44 20 7766 4300	Monaco +377 97 97 81 21	New York +1 212 223 0410	Miami +1 305 672 0150	Singapore +65 9665 8990	Beverly Hills +1 310 424 5112	Palma +34 971 495 413	Athens +30 210 967 1661
Dubai +971 4 425 5874	Phuket +66 7623 9739	Hong Kong +852 6496 2094	Tokyo +81 46 738 8612	Sydney +61 499 945 557	Mumbai +91 98211 67253	Shanghai +86 187 0898 6800	Rio de Janeiro +55 21 2553-3238
Aspen +1 970 710 2294							

Advertising of these vessel(s) in printed publications, on the internet or in any other medium is not permitted without prior written permission from Burgess. All particulars are given in good faith and are believed correct but they cannot be guaranteed.

Last updated: 21 February 2025