

NEW SECRET



NEW SECRET

SPÉCIFICATIONS.



Prix demandé
EUR 99 000 000 (EU VAT paid)



Chantier
2017, Amels, The Netherlands



Longueur
74m



Largeur
12,5m



Tirant d'eau
3,8m



Tonnage brut
1 790



Vitesse de croisière
15 knots



Vitesse maximale
16,5 knots



Pavillon
Marshall Islands



Position
West Mediterranean



Classe
Lloyd's register 100A1, SSC, Yacht Mono G6
LMC, UMS, SCM, Green Passport, MCA L3 Code,
Full ISM, ISPS, MLC



Designer extérieur
Tim Heywood



Designer d'intérieur
Winch Design



Construction
Hull - Steel, Superstructure - Aluminium, Deck -
Teak



Équipage
19



Invités
14



Cabines
6 (5 × double, 1 × twin, 2 × additional berths)



Moteurs
2 × 2 667hp Caterpillar



Propulsion
Twin screw diesel yacht

[Voir le yacht sur le site](#)



NEW SECRET

Main deck lounge



Main deck lounge



Main deck dining area



Main deck dining area



NEW SECRET

Main deck entrance



Owner's deck foyer



Owner's master cabin



Owner's study



NEW SECRET

Owner's en suite bathroom



Owner's suite



VIP cabin



VIP cabin



NEW SECRET

VIP en suite bathroom



Guest twin cabin



Owner's deck lounge



Owner's deck lounge



NEW SECRET

Spa



Spa



Spa



Spa fold-down balcony



BURGESS

Discover the difference.
burgessyachts.com



NEW SECRET

Gym



Massage room



Main deck aft



Main deck aft



NEW SECRET

Owner's deck aft



Owner's deck aft



Owner's deck forward seating



Bridge deck helipad



NEW SECRET

Sun deck forward jacuzzi



Cruising



Stern view



BURGESS

Discover the difference.
burgessyachts.com



NEW SECRET

APERÇU.

The 74m (242.7ft) NEW SECRET has a Lloyd's-classed steel hull and aluminium superstructure. Delivered in 2017 by Amels as the second hull of its 242 LE series, she has exteriors by Tim Heywood and interiors by Winch Design, giving her full northern European provenance. Only ever used privately by her original owner, she presents in immaculate condition.

This 1,790GT yacht has many sought-after features. These include an elevator serving lower to bridge decks, an 8m-long (26.2ft) pool on a 180sqm (1,937.5sqft) main deck aft, a lower deck wellness centre with a sea terrace, a 240sqm (2,583sqft) private owner's deck, two VIP suites forward on the main deck and a touch-and-go helipad.

Her sun deck has a raised jacuzzi surrounded by sunpads and intimate lounge seating forward. The bridge deck has sofa seating forward of the bridge with step access from the owner's deck below. The aft deck has a helipad and inside is an en suite pilot's cabin with a single berth and a guest lounge.

The owner's deck, which features full-height glazing throughout, has a bedroom forward overlooking a private foredeck lounge, to which there is direct access. Aft there are his-and-hers bathrooms, one with a bath, the other a shower, and walk-in wardrobes. Off the owner's lobby there is a private office and dayhead.

A media lounge faces a large bulkhead-mounted TV and a more convivial lounge looks aft through an arc of sliding glass doors onto a private aft terrace. Outside there is a fully equipped bar and dining for up to 14 guests beneath the overhang, sheltered by sliding glass screens either side, and sun lounge seating.

The focus of the main deck aft is the huge pool flanked by sun lounging space. Forward of the pool is a daybed shaded by the overhang and a semi-circular bar. There is access to a dayhead on the starboard sidedeck and steps either side lead down to a large swim platform.

Inside sliding glass doors is a lounge with sofas and armchairs. Forward is a formal dining area with a gloss-finished circular walnut table on a polished stone floor. The forward bulkhead features radiating rings of stainless steel around pearlescent crystal tiles, doors that conceal a crockery locker.

The lower deck's full-beam spa has a dedicated gym, massage room, sauna, steam shower and lounge with juice bar radiating off a central large spa pool. To starboard there is a large folding sea terrace.

In addition to the owner's suite and main deck VIP suites, three further guest suites on the lower deck and two additional berths complete accommodation for up to 14 guests in six cabins. She also sleeps 19 crew.

Twin 2,667hp Caterpillar diesel engines give her a top speed of 16.5 knots, and a range of 5,000nm at her passage speed of 12.5 knots, with stabilisers to reduce roll underway and at anchor. Lower deck shell doors conceal two large tenders and a selection of watertoys.

Principales caractéristiques

Hull #2 of successful Amels 242 series designed by Tim Heywood

Privately owned, built for current owner, in pristine condition

Interiors by acclaimed Winch Design

Owner's deck with Master cabin, His and Hers bathroom, office and lounge

2 VIP suites on main deck and 3 large guest cabins on lower deck

8m-long pool on main deck, jacuzzi on sun deck

Elevator from lower to bridge decks

Wellness spa on lower deck with gym and side sea terrace

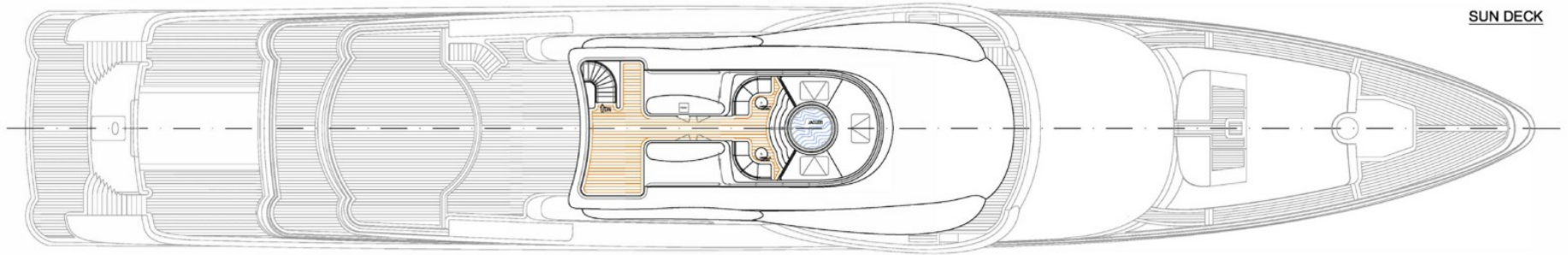
Functional helipad with pilot cabin on bridge deck

Annexes

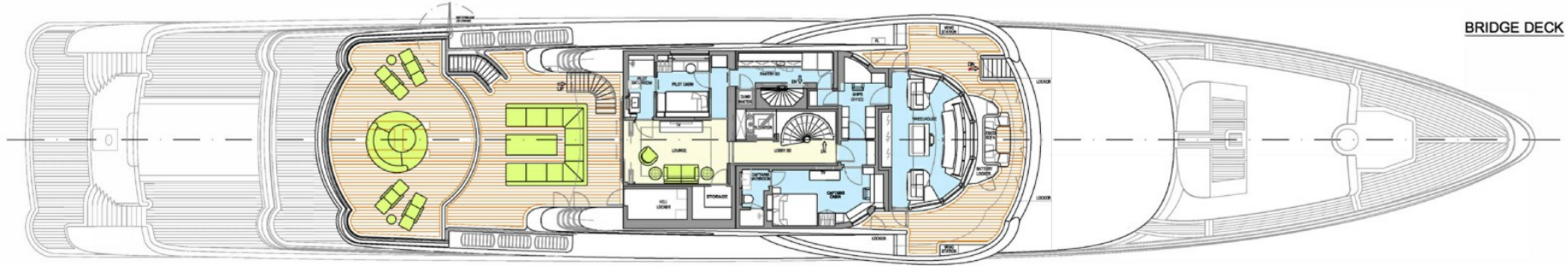
8.8m Pascoe International SY9 Beachlander with 370hp engine, 9.1m Yachtwerft Meyer limousine tender with 2 x 220hp engines

NEW SECRET

Sun Deck / Bridge Deck / Owner's Deck



SUN DECK



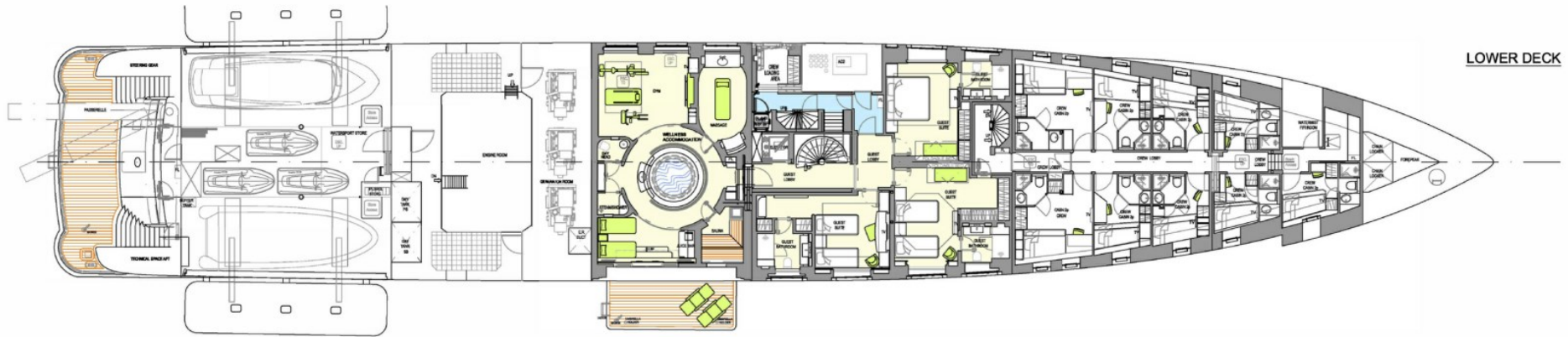
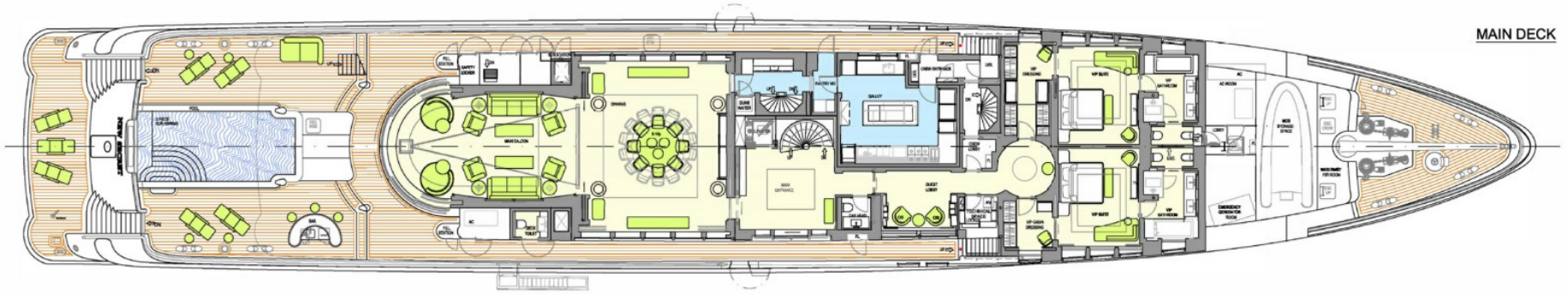
BRIDGE DECK



OWNERS DECK

NEW SECRET

Main Deck / Lower Deck / Tank Deck



BURGESS

WORLD CLASS. WORLD WIDE.

London +44 20 7766 4300	Monaco +377 97 97 81 21	New York +1 212 223 0410	Miami +1 305 672 0150	Singapore +65 9665 8990	Beverly Hills +1 310 424 5112	Palma +34 971 495 413	Athens +30 210 967 1661
Dubai +971 4 425 5874	Phuket +66 7623 9739	Hong Kong +852 6496 2094	Tokyo +81 46 738 8612	Sydney +61 499 945 557	Mumbai +91 98211 67253	Shanghai +86 187 0898 6800	Rio de Janeiro +55 21 2553-3238

La publicité de ce(s) navire(s) dans des publications imprimées, sur Internet ou sur tout autre support n'est pas autorisée sans l'autorisation écrite préalable de Burgess.
Toutes les informations sont données de bonne foi et sont considérées comme exactes, mais elles ne peuvent être garanties.

Dernière mise à jour : 12 mai 2024