

# NEW SECRET



NEW SECRET

# SPECIFICATION.



Asking price  
EUR 99,000,000 (EU VAT paid)



Built  
2017, Amels, The Netherlands



Length  
74m (242.7ft)



Beam  
12.5m (41ft)



Draft  
3.8m (12.5ft)



Gross tonnage  
1,790



Cruising speed  
15 knots



Maximum speed  
16.5 knots



Flag  
Marshall Islands



Lying  
West Mediterranean



Class  
Lloyd's register 100A1, SSC, Yacht Mono G6  
LMC, UMS, SCM, Green Passport, MCA L3 Code,  
Full ISM, ISPS, MLC



Exterior designer  
Tim Heywood



Interior designer  
Winch Design



Construction  
Hull - Steel, Superstructure - Aluminium, Deck - Teak



Crew  
19



Guests  
14



Cabins  
6 (5 × double, 1 × twin, 2 × additional berths)



Engines  
2 × 2,667hp Caterpillar



Propulsion  
Twin screw diesel yacht

[View yacht on website](#)



NEW SECRET

Main deck lounge



Main deck lounge



Main deck dining area



Main deck dining area



NEW SECRET

Main deck entrance



Owner's deck foyer



Owner's master cabin



Owner's study



NEW SECRET

Owner's en suite bathroom



Owner's suite



VIP cabin



VIP cabin



NEW SECRET

VIP en suite bathroom



Guest twin cabin



Owner's deck lounge



Owner's deck lounge



NEW SECRET

Spa



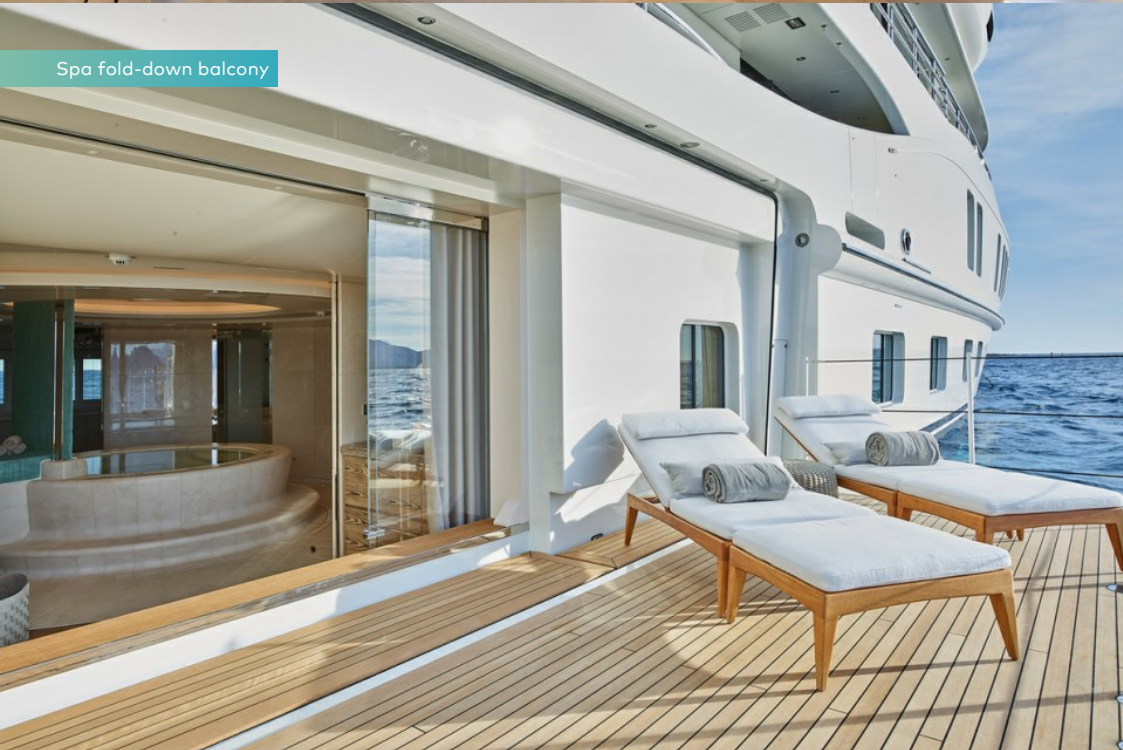
Spa



Spa



Spa fold-down balcony



NEW SECRET

Gym



Massage room



Main deck aft



Main deck aft





NEW SECRET

Owner's deck aft



Owner's deck aft



Owner's deck forward seating



Bridge deck helipad



## NEW SECRET

Sun deck forward jacuzzi



Cruising



Stern view



BURGESS

Discover the difference.  
burgessyachts.com



NEW SECRET

# OVERVIEW.

The 74m (242.7ft) NEW SECRET has a Lloyd's-classed steel hull and aluminium superstructure. Delivered in 2017 by Amels as the second hull of its 242 LE series, she has exteriors by Tim Heywood and interiors by Winch Design, giving her full northern European provenance. Only ever used privately by her original owner, she presents in immaculate condition.

This 1,790GT yacht has many sought-after features. These include an elevator serving lower to bridge decks, an 8m-long (26.2ft) pool on a 180sqm (1,937.5sqft) main deck aft, a lower deck wellness centre with a sea terrace, a 240sqm (2,583sqft) private owner's deck, two VIP suites forward on the main deck and a touch-and-go helipad.

Her sun deck has a raised jacuzzi surrounded by sunpads and intimate lounge seating forward. The bridge deck has sofa seating forward of the bridge with step access from the owner's deck below. The aft deck has a helipad and inside is an en suite pilot's cabin with a single berth and a guest lounge.

The owner's deck, which features full-height glazing throughout, has a bedroom forward overlooking a private foredeck lounge, to which there is direct access. Aft there are his-and-hers bathrooms, one with a bath, the other a shower, and walk-in wardrobes. Off the owner's lobby there is a private office and dayhead.

A media lounge faces a large bulkhead-mounted TV and a more convivial lounge looks aft through an arc of sliding glass doors onto a private aft terrace. Outside there is a fully equipped bar and dining for up to 14 guests beneath the overhang, sheltered by sliding glass screens either side, and sun lounge seating.

The focus of the main deck aft is the huge pool flanked by sun lounging space. Forward of the pool is a daybed shaded by the overhang and a semi-circular bar. There is access to a dayhead on the starboard sidedeck and steps either side lead down to a large swim platform.

Inside sliding glass doors is a lounge with sofas and armchairs. Forward is a formal dining area with a gloss-finished circular walnut table on a polished stone floor. The forward bulkhead features radiating rings of stainless steel around pearlescent crystal tiles, doors that conceal a crockery locker.

The lower deck's full-beam spa has a dedicated gym, massage room, sauna, steam shower and lounge with juice bar radiating off a central large spa pool. To starboard there is a large folding sea terrace.

In addition to the owner's suite and main deck VIP suites, three further guest suites on the lower deck and two additional berths complete accommodation for up to 14 guests in six cabins. She also sleeps 19 crew.

Twin 2,667hp Caterpillar diesel engines give her a top speed of 16.5 knots, and a range of 5,000nm at her passage speed of 12.5 knots, with stabilisers to reduce roll underway and at anchor. Lower deck shell doors conceal two large tenders and a selection of watertoys.

## Key features

---

**Hull #2 of successful Amels 242 series designed by Tim Heywood**

---

**Privately owned, built for current owner, in pristine condition**

---

**Interiors by acclaimed Winch Design**

---

**Owner's deck with Master cabin, His and Hers bathroom, office and lounge**

---

**2 VIP suites on main deck and 3 large guest cabins on lower deck**

---

**8m-long pool on main deck, jacuzzi on sun deck**

---

**Elevator from lower to bridge decks**

---

**Wellness spa on lower deck with gym and side sea terrace**

---

**Functional helipad with pilot cabin on bridge deck**

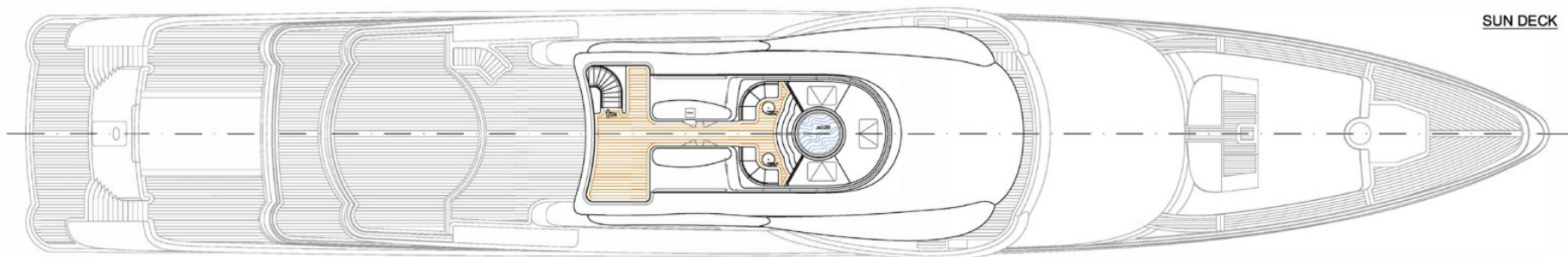
---

## Tenders

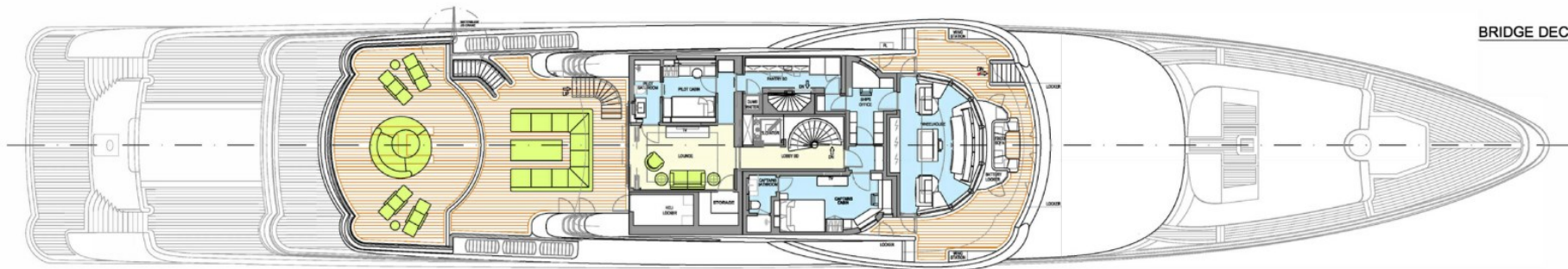
---

8.8m Pascoe International SY9 Beachlander with 370hp engine, 9.1m Yachtwerft Meyer limousine tender with 2 x 220hp engines

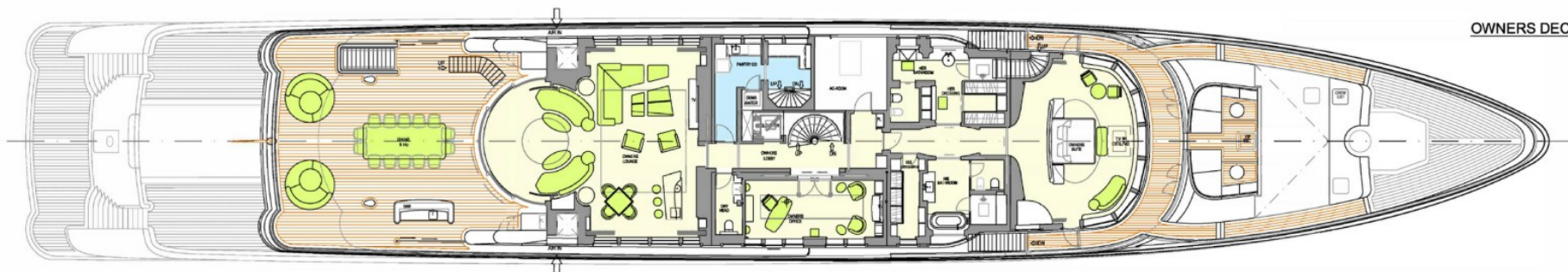




SUN DECK



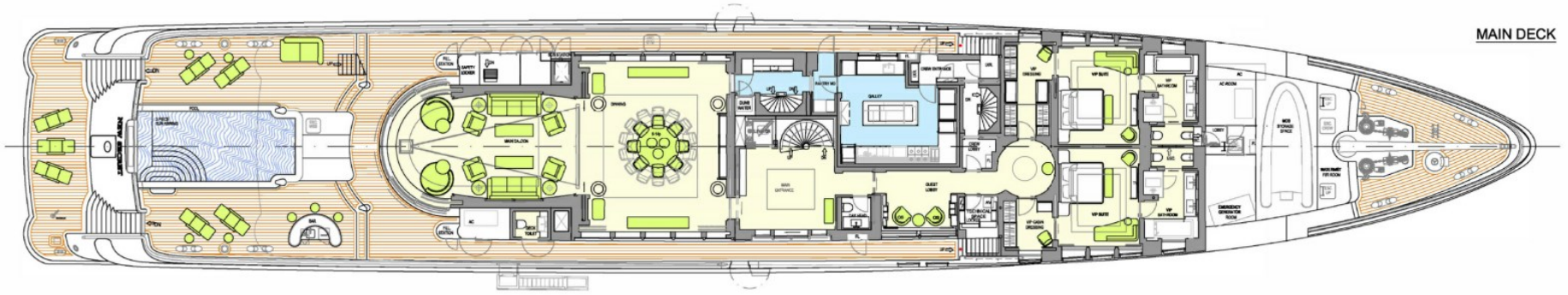
BRIDGE DECK



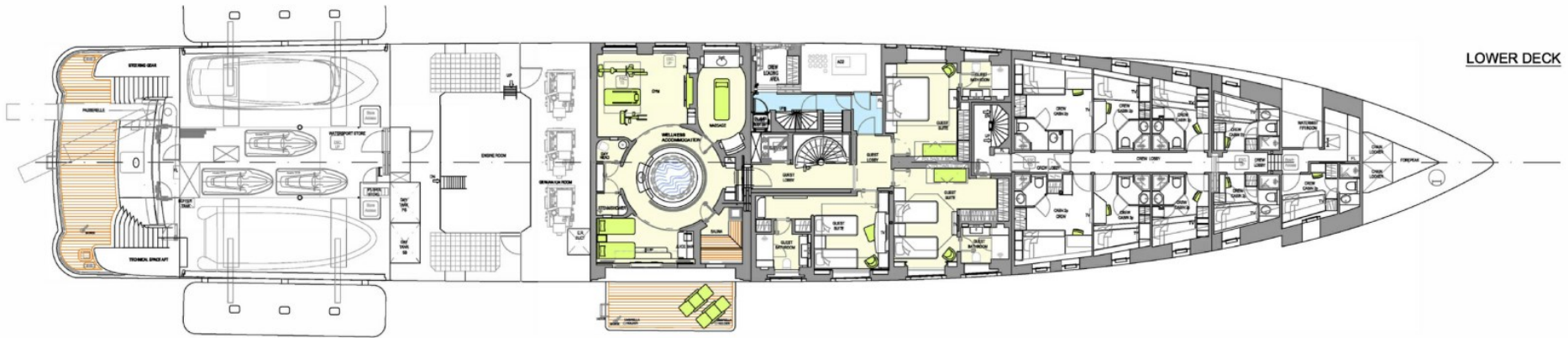
OWNERS DECK

# NEW SECRET

Main Deck / Lower Deck / Tank Deck



MAIN DECK



LOWER DECK



TANK DECK

# BURGESS

# WORLD CLASS. WORLD WIDE.

|                            |                            |                             |                          |                            |                                  |                                  |                                    |
|----------------------------|----------------------------|-----------------------------|--------------------------|----------------------------|----------------------------------|----------------------------------|------------------------------------|
| London<br>+44 20 7766 4300 | Monaco<br>+377 97 97 81 21 | New York<br>+1 212 223 0410 | Miami<br>+1 305 672 0150 | Singapore<br>+65 9665 8990 | Beverly Hills<br>+1 310 424 5112 | Palma<br>+34 971 495 413         | Athens<br>+30 210 967 1661         |
| Dubai<br>+971 4 425 5874   | Phuket<br>+66 7623 9739    | Hong Kong<br>+852 6496 2094 | Tokyo<br>+81 46 738 8612 | Sydney<br>+61 499 945 557  | Mumbai<br>+91 98211 67253        | Shanghai<br>+86 187 0898<br>6800 | Rio de Janeiro<br>+55 21 2553-3238 |

---

Advertising of these vessel(s) in printed publications, on the internet or in any other medium is not permitted without prior written permission from Burgess. All particulars are given in good faith and are believed correct but they cannot be guaranteed.

Last updated: 12 May 2024