

NAVETTA 42



NAVETTA 42

SPÉCIFICATIONS.



Prix demandé
EUR 22 500 000



Chantier
2023, Custom Line (Ferretti), Italy



Longueur
41,8m



Largeur
8,1m



Tirant d'eau
2,3m



Tonnage brut
348



Vitesse de croisière
12 knots



Vitesse maximale
17 knots



Autonomie
3 200 nm



Pavillon
Dominica



Position
Middle East



Classe
RINA



Designer extérieur
Zuccon International Project



Designer d'intérieur
Zuccon International Project



Construction
Hull - GRP, Superstructure - GRP, Deck - Teak



Équipage
7



Invités
10



Cabines
5 (5 x double)



Moteurs
2 x 1 623hp Caterpillar



Propulsion
Twin screw diesel yacht

[Voir le yacht sur le site](#)

[Regarder la vidéo du yacht](#)



NAVETTA 42







NAVETTA 42

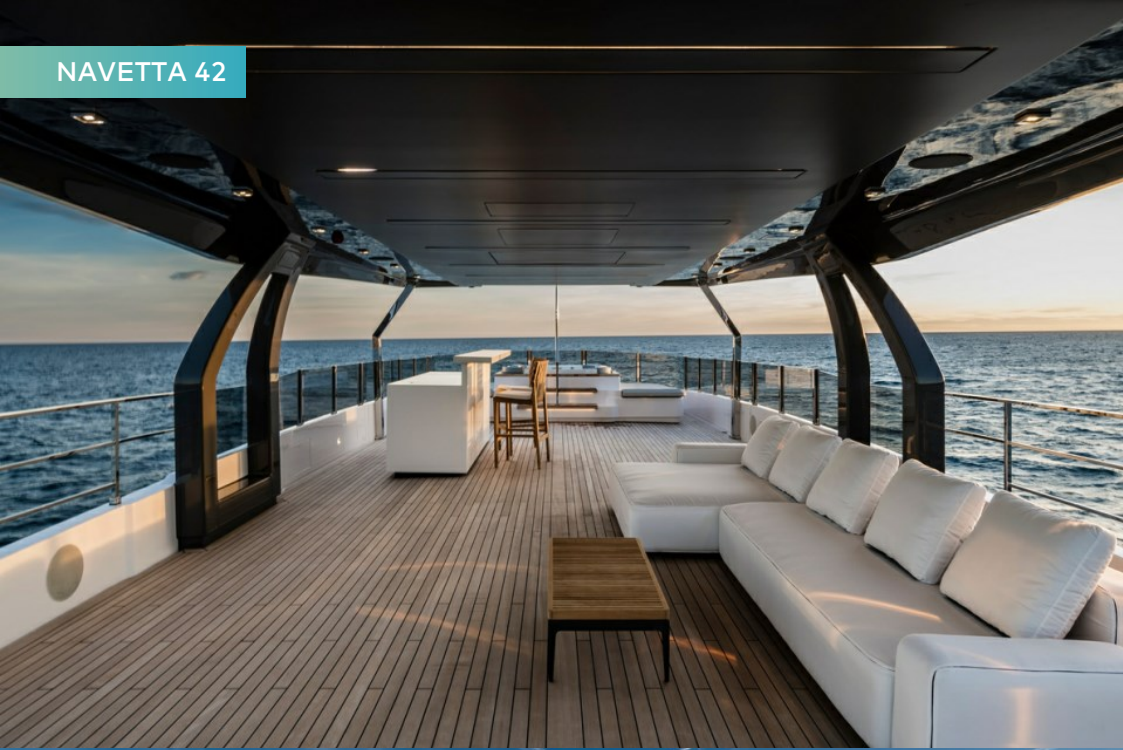


BURGESS

Discover the difference.
burgessyachts.com







NAVETTA 42



BURGESS

Discover the difference.
burgessyachts.com



NAVETTA 42



BURGESS

Discover the difference.
burgessyachts.com



NAVETTA 42

APERÇU.

This brand-new yacht is the tenth hull in the popular NAVETTA 42 series. Delivered in 2023, the 41.8m (137.1ft) hull is of GRP construction, built to RINA classification and MCA compliance by Custom Line (Ferretti) in Ancona, Italy. The yacht is the sole design vision of Zuccon International Project.

A large sun deck has a raised jacuzzi forward with sunpads either side and glass windscreens to preserve the views. Beneath the hardtop there is a sit-up bar with BBQ to port and lounge seating further aft to starboard, and the lounge is served by a 50in flip-down TV. Aft there is space for several sunloungers.

The upper deck aft has C-shaped sun lounge seating aft and there is open-air dining beneath the overhang. On the main deck aft is lounge seating and steps leading down to the swim platform and beach club with dayhead.

From the main deck aft the port sidedeck leads to steps up to a substantial foredeck lounge area forward where there is bench seating forward of the bridge, a forward-facing sun lounge with two coffee tables and a huge sunpad forward of that. There is also access from the sky lounge to the foredeck lounge on the starboard side.

Inside, both main saloon and sky lounge have sliding glass doors aft and either side. In the main saloon these are in the dining area and lead to folding balconies to deliver unimpeded views and more outside space. Aft of the formal dining area there are two opposing banks of sofa seating and a fold-down TV.

In the sky lounge there is lounge seating through the sliding glass doors from the open-air dining area. There are sliding glass doors either side forward in the space and these provide easy internal access to the foredeck lounge.

The full-beam owner's suite is forward on the main deck. His-and-hers en suites share a single shower room and there are two walk-in wardrobe areas as well as an owner's office.

On the lower deck, four double cabins complete accommodation for 10 guests in five cabins. There are also four crew cabins for up to eight crew including the captain's quarters on the upper deck.

Twin 1,623hp Caterpillar diesel engines give her a top speed of 16 knots, a cruising speed of 13 knots and a range of 3,200nm at her passage speed of 10 knots. A Williams 565 DieselJet tender stows behind a shell door forward of the beach club and there is a rescue tender with launch crane beneath the foredeck sunpad. An Atlas shore power converter is suitable for US facilities.

Principales caractéristiques

Brand new Navetta 42, under full warranty

The largest model in Ferretti Group's Custom Line range

Fold-down transom swim platform and beach club

Fold-down balconies in the main salon

Spacious sun deck with al fresco dining, lounging, and jacuzzi

Open-air lounging area on the foredeck

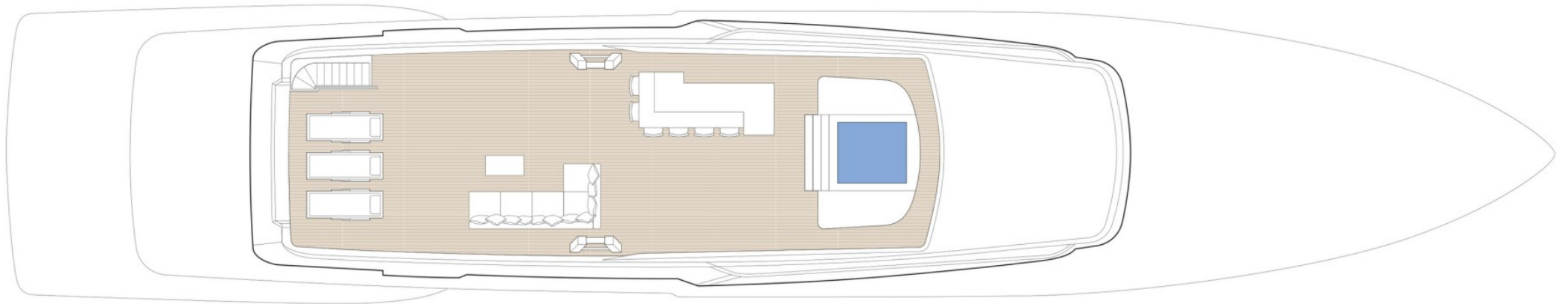
Accommodation for 10 guests in five cabins

Atlas shore power converter suitable for US facilities

Annexes

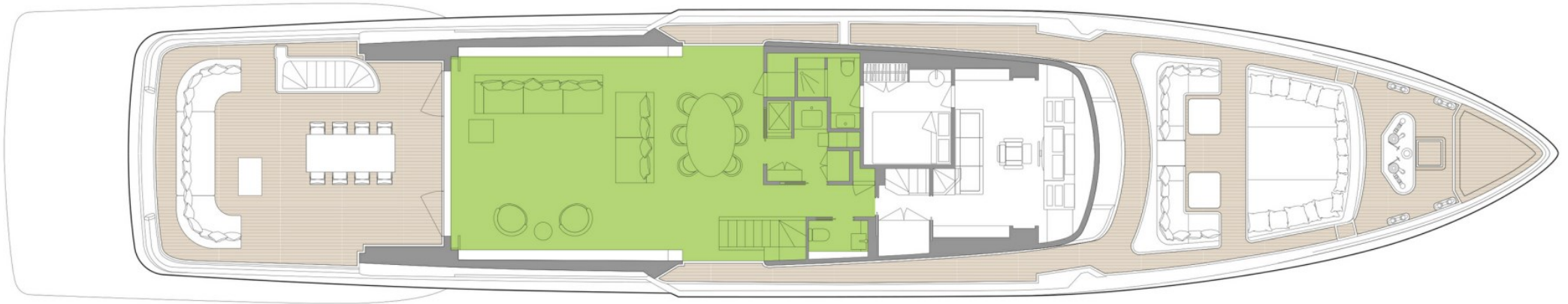
Williams 565 tender

SUN DECK



■ GUEST AREAS ■ OWNER'S SUITE ■ GUEST CABINS ■ JACUZZI

UPPER DECK



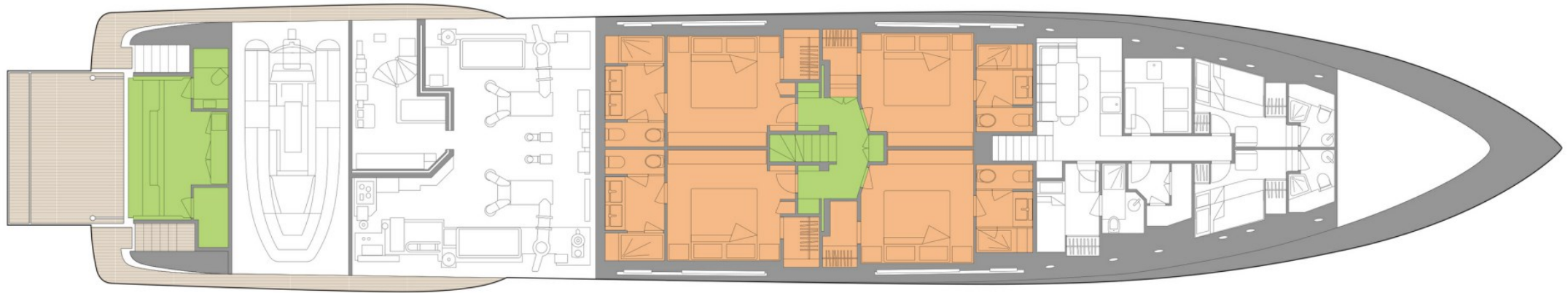
■ GUEST AREAS ■ OWNER'S SUITE ■ GUEST CABINS ■ JACUZZI

MAIN DECK



■ GUEST AREAS ■ OWNER'S SUITE ■ GUEST CABINS ■ JACUZZI

LOWER DECK



 GUEST AREAS  OWNER'S SUITE  GUEST CABINS  JACUZZI

BURGESS

WORLD CLASS. WORLD WIDE.

London +44 20 7766 4300	Monaco +377 97 97 81 21	New York +1 212 223 0410	Miami +1 305 672 0150	Singapore +65 9665 8990	Beverly Hills +1 310 424 5112	Palma +34 971 495 413	Athens +30 210 967 1661
Dubai +971 4 425 5874	Phuket +66 7623 9739	Hong Kong +852 6496 2094	Tokyo +81 46 738 8612	Sydney +61 499 945 557	Mumbai +91 98211 67253	Shanghai +86 187 0898 6800	

La publicité de ce(s) navire(s) dans des publications imprimées, sur Internet ou sur tout autre support n'est pas autorisée sans l'autorisation écrite préalable de Burgess.
Toutes les informations sont données de bonne foi et sont considérées comme exactes, mais elles ne peuvent être garanties.

Dernière mise à jour : 25 avril 2024