

# NAIA

---



NAIA

# OVERVIEW.

At 73.6m (241.4ft), NAIA is a stunning and versatile explorer yacht that was built to deliver exceptional experiences. A proven charter yacht, she offers superb volume inside and out to delight the most discerning of guests.

Everything in the luxurious yet soothingly zen interior by Mark Berryman has been carefully designed to create a warm and welcoming environment. Guests will be wowed by the gorgeous bridge deck lounge, featuring rich leather flooring perfectly combined with mild brown wood panels and cabinetry. Large U-shaped sofas, a cinema screen and a dining table are an invitation to relax and socialise with family and friends.

NAIA has a dedicated owner's penthouse deck hosting the master suite with panoramic views, office, private exterior terraces forward and aft, and a stunning bathroom featuring elements of bamboo and light stone. A further six double guests cabins, four of which convert to twins, plus a single cabin with additional pullman berth are all on the main deck benefiting from plenty of natural light and outstanding views. An elevator serves all decks.

Spend the day gazing at the pristine surroundings from the helipad convertible into an extensive sun lounging area with stylish loose furniture. It is also fully certified to land a helicopter on charter. If you wish to get some exercise, the adjacent gym has all the latest equipment and a large central jacuzzi.

NAIA comes with an exhilarating fleet of tenders and all the watertoys to keep everyone active. Exploration and diving are a highlight on board thanks to an extensive inventory of equipment and dedicated diving room. Her ice class 1D hull adds more expedition possibilities if you dream of venturing off the beaten track.

With her first class crew, comfortable accommodation and varied range of amenities over four guest decks, NAIA promises her guests an extraordinary charter that will surpass your expectations.

## Key features

---

**Dedicated owner's deck with office and lounge plus private exterior decks**

---

**Fully equipped gym with jacuzzi**

---

**Helipad - commercially certified**

---

**Flexible accommodation for up to 12 guests in 8 cabins**

---

**Guest cabins located on the main deck**

---

**Elevator serving all decks**

---

**Wheelchair friendly**

---

**On board masseuse**

---

**Ice class 1D hull for off-the-beaten-track expeditions**

---

**Zero speed stabilisers to reduce any rolling motion while at anchor**

---



NAIA

Heli deck - commercially certified



Welcome on board



Master suite



Master suite



BURGESS

Discover the difference.  
burgessyachts.com





NAIA

Master suite - 180 degree views



Master suite bathroom



Master suite shower room



Master suite



BURGESS

Discover the difference.  
burgessyachts.com





NAIA

Master suite office



Master suite lounge



Master suite - private deck aft



Master suite - private deck forward



BURGESS

Discover the difference.  
burgessyachts.com





NAIA

Elevator



Heli deck forward



Heli deck observation lounge



Heli deck observation lounge and bar



BURGESS

Discover the difference.  
burgessyachts.com





NAIA

Gym with centrally located jacuzzi



Gym and side deck



Gym



Heli deck dining





NAIA

Heli deck lounging



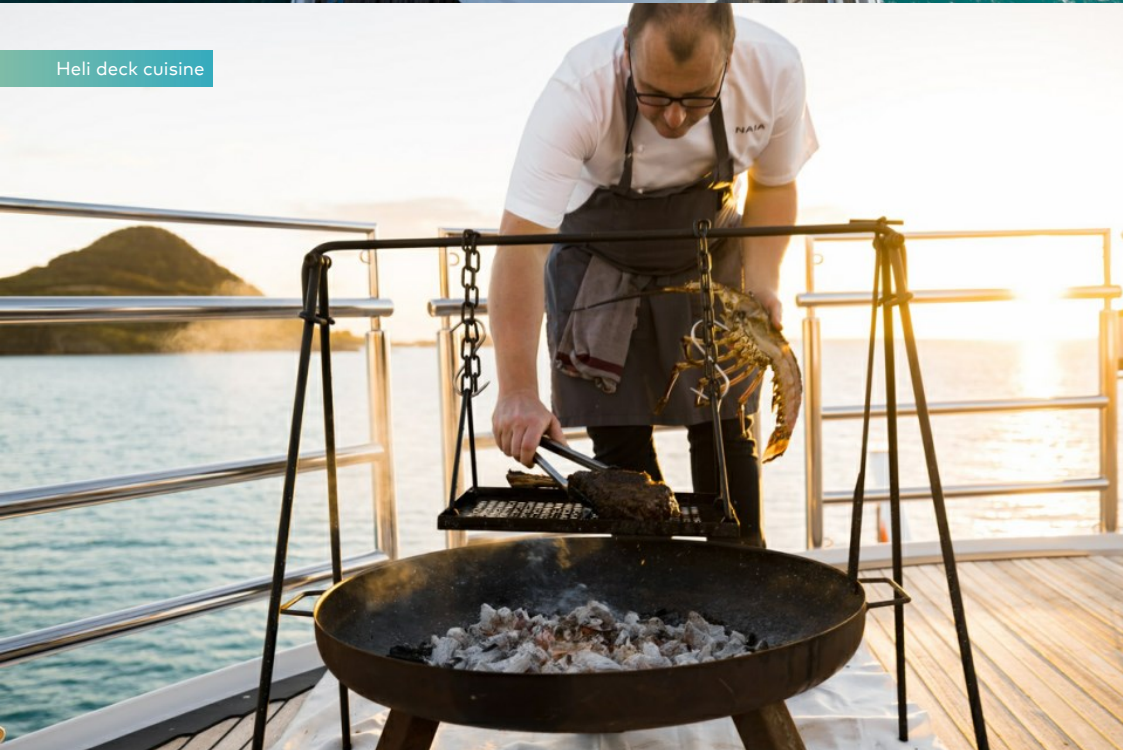
Heli deck lounging



Heli deck dining



Heli deck cuisine



BURGESS

Discover the difference.  
burgessyachts.com





NAIA

Heli deck dining



Bridge deck lounge and bar



Bridge deck lounge



Bridge deck lounge bar



BURGESS

Discover the difference.  
burgessyachts.com





NAIA

Bridge deck dining



Bridge deck dining



Bridge deck aft



Bridge deck aft



BURGESS

Discover the difference.  
burgessyachts.com





NAIA

Corridor



VIP suite



VIP suite lounge and office



VIP suite shower room





NAIA

Double cabin



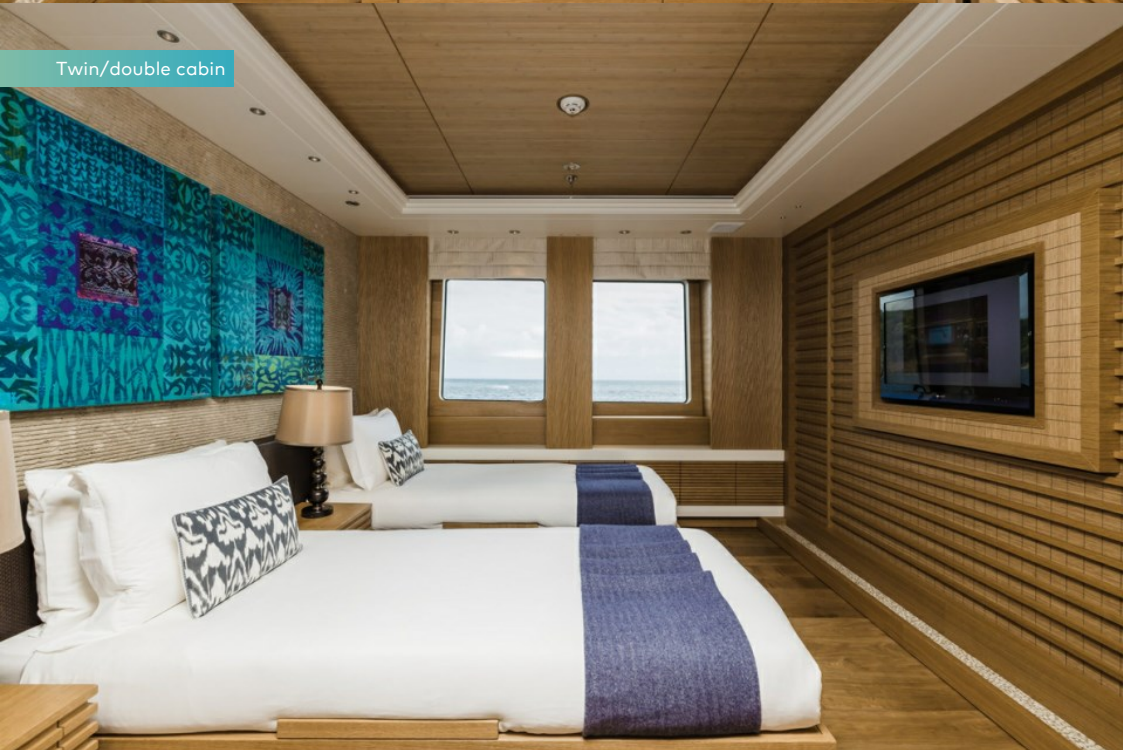
Double/twin cabin



Guest cabin shower room



Twin/double cabin



BURGESS

Discover the difference.  
burgessyachts.com





## NAIA

Double/twin cabin



Guest cabin shower room



Double/twin cabin



Single cabin with additional pullman berth





NAIA

Watertoys



Main deck aft



Dive room access to swim platform



Dive room



BURGESS

Discover the difference.  
burgessyachts.com





NAIA

Swim platform



Watertoys



Watertoys



Swim platform pool and toys



BURGESS

Discover the difference.  
burgessyachts.com





NAIA

9.6m Limousine tender



Table tennis



On board masseuse



Heli deck golf



BURGESS

Discover the difference.  
burgessyachts.com





NAIA

Bridge deck forward



Cruising



BURGESS

Discover the difference.  
burgessyachts.com





NAIA

# SPECIFICATION.



Length  
73.6m (241.4ft)



Built  
2011 (refitted 2014), Freire Shipyard, Spain



Interior designer  
Mark Berryman Design



Beam  
13.2m (43.3ft)



Draft  
4.5m (14.8ft)



Gross tonnage  
2,059



Cruising speed  
12 knots



Maximum speed  
12.5 knots



Fuel consumption at cruising speed  
700 litres per hour



Engines  
2 x 3,135hp Caterpillar



Guests  
12



No. of guest cabins  
8 (3 x double, 4 x double/twin, 1 x single,  
1 x additional berths)



Crew  
23

[View yacht on website](#)

[Watch yacht video](#)



BURGESS

Discover the difference.  
burgessyachts.com





# EQUIPMENT.

## Tenders & toys



1 x Limousine tender



3 x Tenders



1 x Deck jacuzzi



Waterslide



Aquapark



RYA training centre for jetskis & waverunners



2 x Waverunners



2 x SeaBobs



4 x Kayaks



2 x Stand up paddleboards



Pedal board



Wakeboard



Kneeboard



Waterskis



Inflatable toys



Scuba diving equipment



Fishing gear



Snorkelling gear

9.6m Vikal Limousine tender with 2 x 255hp engines | 9.5m McMullen & Wing tender with 2 x 200hp diesel engines | 5.9m Zodiac Milpro MK5 HD RIB tender with 60hp engine | 6.5m Wahoo rescue tender with 180hp engine | 1 x Yamaha VX Cruiser waverunner (3 man) | 1 x Yamaha VX cruiser HO 2021 | 2 x SeaBobs | 4 x kayaks (2 x 1 man and 2 x 2 man) | 2 x stand up paddle boards | 2 x Schiller water bikes (1 man) | Waterskis | Wakeboards & kneeboard | Diving equipment (rendezvous diving only) | Fishing gear | 9m swim platform pool | Inflatables | Approved RYA training centre for guests' use of personal watercraft (jetskis)



## Fitness & wellness

---



Abdominal roller



Cross trainer



Free weights



Multi gym



Pedal bike



Rowing machine



Training bench



Treadmill



Upright stationary bike



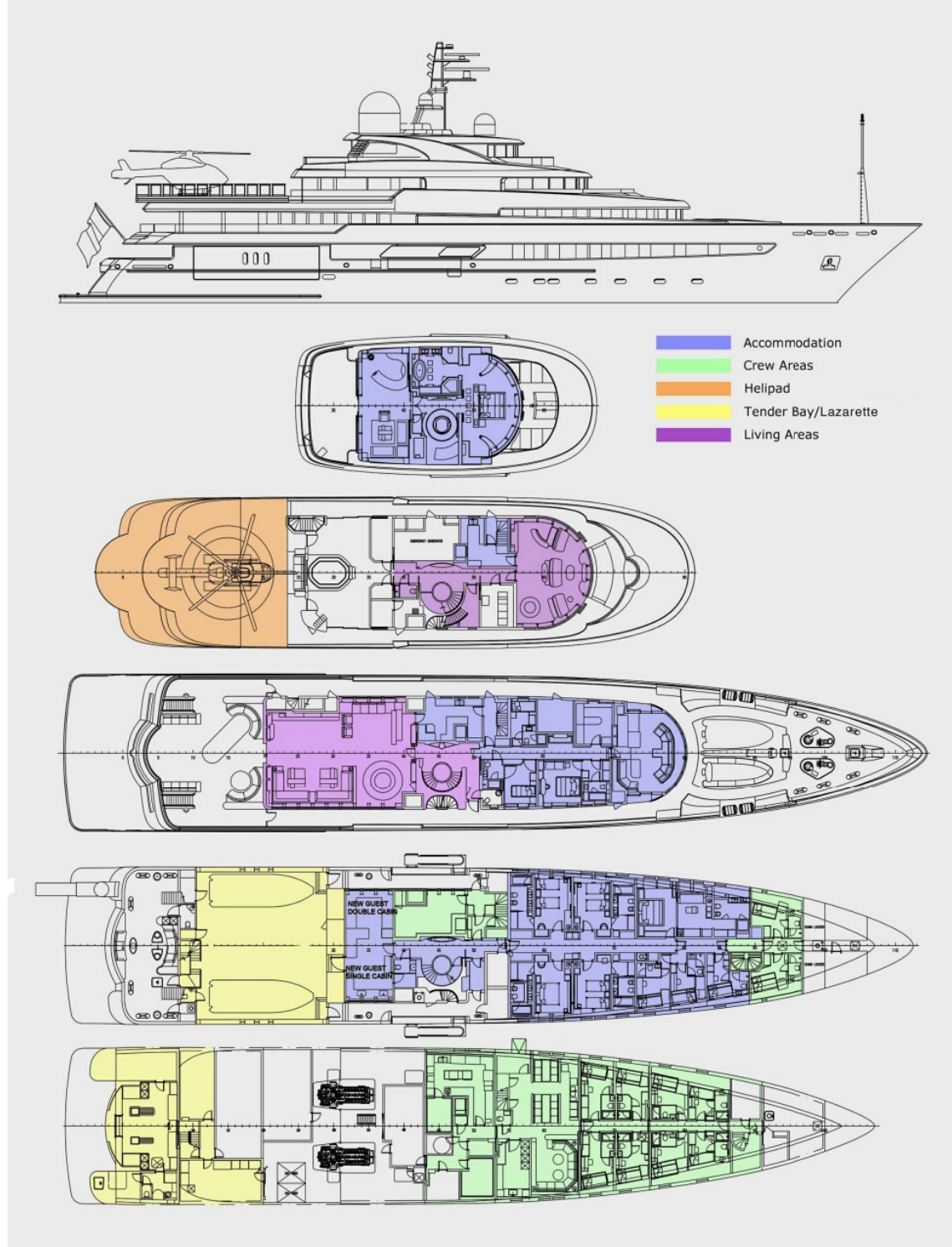
Yoga mats

## Communication & entertainment

---

Comprehensive audio-visual systems | Satellite television | PLEX movie server | On demand TV with Apple TV | Cinema set up in the bridge deck lounge | Satcom & cellular communications facilities | VSAT | Starlink | Wi-Fi internet



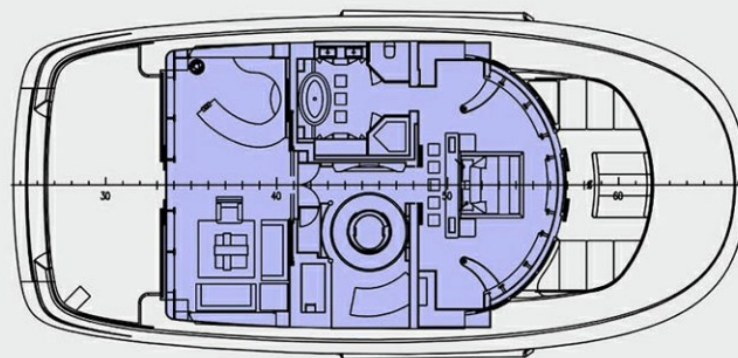




# NAIA

## General Arrangement

- Accommodation
- Crew Areas
- Helipad
- Tender Bay/Lazarette
- Living Areas



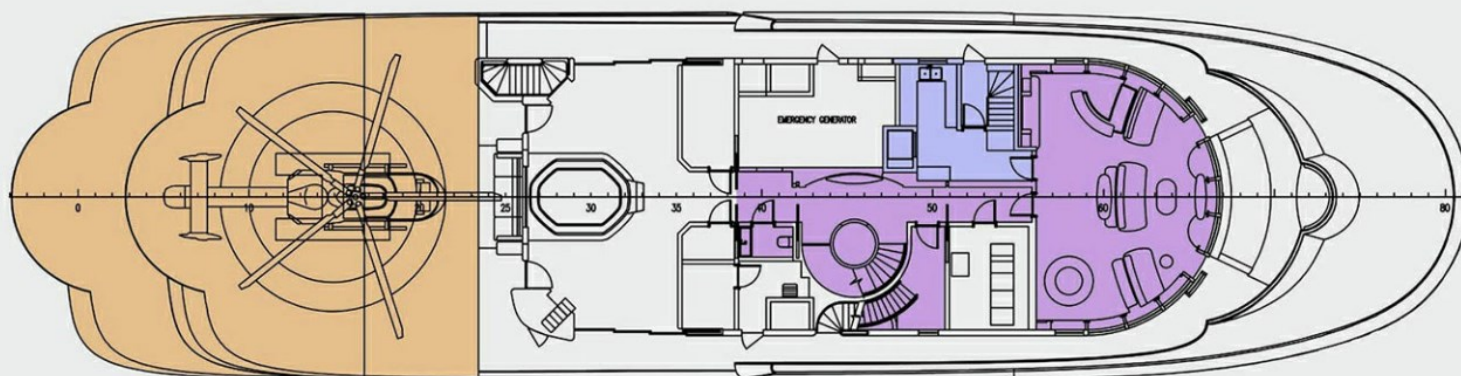
**OWNER'S DECK**



# NAIA

## General Arrangement

- Accommodation
- Crew Areas
- Helipad
- Tender Bay/Lazarette
- Living Areas



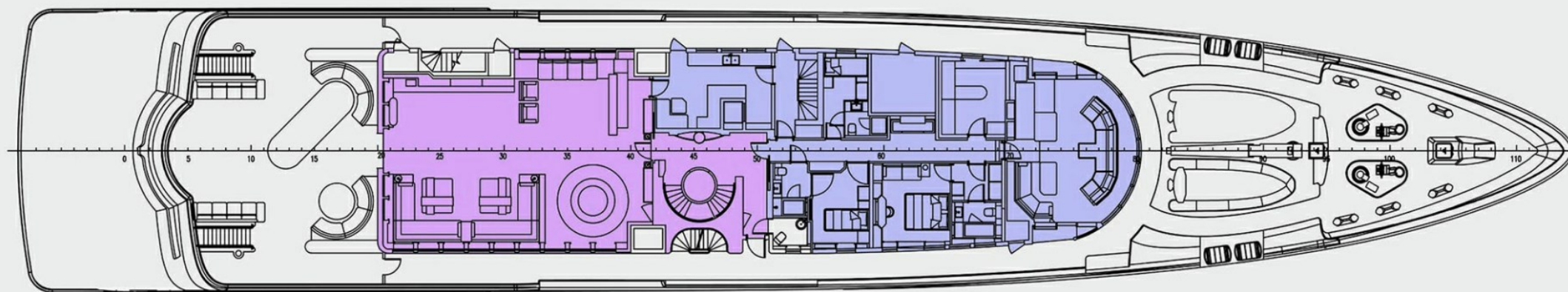
HELI DECK



# NAIA

## General Arrangement

- Accommodation
- Crew Areas
- Helipad
- Tender Bay/Lazarette
- Living Areas



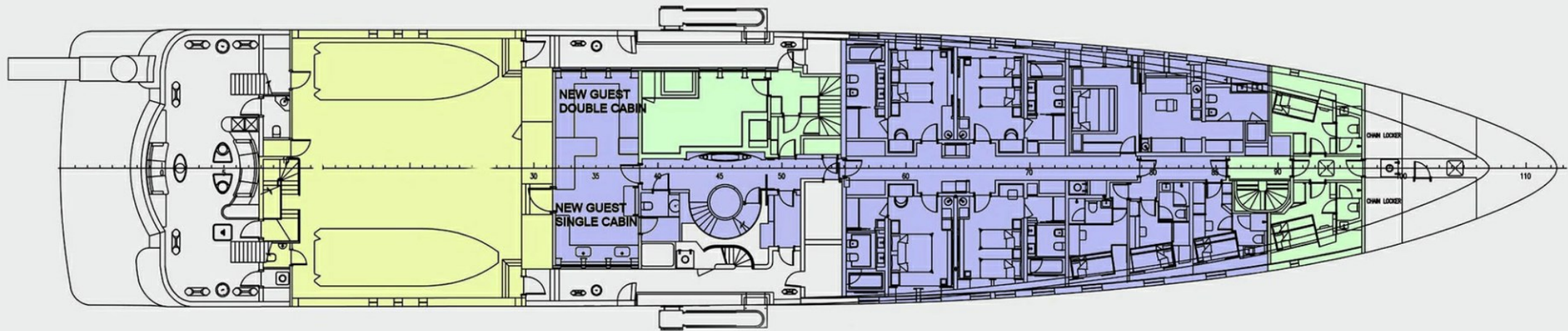
**BRIDGE DECK**



# NAIA

## General Arrangement

- Accommodation
- Crew Areas
- Helipad
- Tender Bay/Lazarette
- Living Areas



**MAIN DECK**



# NAIA

## General Arrangement

- Accommodation
- Crew Areas
- Helipad
- Tender Bay/Lazarette
- Living Areas



**LOWER DECK**



# BURGESS

# WORLD CLASS. WORLD WIDE.

London +44 20 7766 4300	Monaco +377 97 97 81 21	New York +1 212 223 0410	Miami +1 305 672 0150	Singapore +65 9665 8990	Beverly Hills +1 310 424 5112	Palma +34 971 495 413	Athens +30 210 967 1661
Dubai +971 4 425 5874	Phuket +66 7623 9739	Hong Kong +852 6496 2094	Tokyo +81 46 738 8612	Sydney +61 499 945 557	Mumbai +91 98211 67253	Shanghai +86 187 0898 6800	

Advertising of these vessel(s) in printed publications, on the internet or in any other medium is not permitted without prior written permission from Burgess. All particulars are given in good faith and are believed correct but they cannot be guaranteed.

Last updated: 23 April 2024