

# MY LEGACY

---



## MY LEGACY

# SPECIFICATION.



Asking price  
**EUR 36,000,000**



Built  
**2021, Codecasa, Italy**



Length  
**55.8m (183ft)**



Beam  
**10.2m (33.5ft)**



Draft  
**3.4m (11.2ft)**



Gross tonnage  
**887**



Cruising speed  
**14 knots**



Maximum speed  
**18 knots**



Range  
**5,000 nm**



Flag  
**Cayman Islands**



Lying  
**West Mediterranean**



Class  
**Lloyd's Register (LR) ⌘ EMEA ⌘ 100 A1, SSC,  
Yacht, Mono G6 ⌘ LMC, UMS**



Exterior designer  
**Codecasa**



Interior designer  
**Design Studio Spadolini**



Construction  
**Hull - Steel, Superstructure - Aluminium, Deck  
- Teak**



Crew  
**13**



Guests  
**10**



Cabins  
**5 (3 × double, 2 × double/twin)**



Engines  
**2 × 2,375hp Caterpillar**



Propulsion  
**Twin screw diesel yacht**

[View yacht on website](#)

[Watch yacht video](#)



MY LEGACY

Main saloon



Main saloon



Main deck dining



Master cabin



# MY LEGACY

Master cabin



Master cabin



Master cabin lounge



Master cabin en suite



MY LEGACY

Main deck VIP cabin



Main deck foyer



Lower deck VIP cabin



Lower deck VIP cabin



## MY LEGACY

Guest cabin



Sky lounge



Main deck aft



Main deck aft



BURGESS

Discover the difference.  
burgessyachts.com



# MY LEGACY

Bridge deck aft dining



Bridge deck forward



Bridge deck forward



Sun deck



# MY LEGACY

Sun deck



Sun deck



Sun deck aft



Sun deck pool





# MY LEGACY

Sun deck pool



Sun deck pool



Swim platform



Aerial view



MY LEGACY

MY LEGACY



BURGESS

Discover the difference.  
burgessyachts.com



# OVERVIEW.

**Built at the renowned Italian Shipyard Codecasa, MY LEGACY is a 55.8m (183ft) yacht delivered in 2021. She has a steel hull and aluminium superstructure built to Lloyd's classification with naval architecture by the shipyard. Her exteriors are by Codecasa and with a generous beam of 10.2m she offers 887GT of interior volume showcasing design by Tommaso Spadolini, with an elevator serving all guest decks.**

Considerable guest deck spaces include the sun deck with sunloungers aft, a lounge area, bar and an expansive sun deck pool. On a spacious bridge deck aft there is seating and a large convertible dining area for 10 to 12 guests. Sliding glass doors lead into a sky lounge with seating surrounding a coffee table and facing a movable TV on the port aft bulkhead. Walkaround decks lead to a private lounge forward of the bridge.

Lobby stairs lead down to the main deck foyer with access to the sidedeck and a dayhead. Aft is the formal dining space and there is an open-plan lounge aft of that with seating for ten. Sliding glass doors aft bring the outside in. On the main deck aft is a lounge area partially shaded by the upper deck overhang.

She welcomes 10 guests in five cabins. The owner's suite is forward on the main deck with a lounge area, spacious dressing room and en suite. Aft of the owner's suite is a VIP cabin that can be converted between double or twin berths. On the lower deck is a full-beam VIP cabin with a twin and double cabin aft.

As well as the main tender in the aft garage, there is a rescue tender forward beneath a flush deck hatch. Twin 2,375hp Caterpillar 3512E Tier III diesel engines give her a top speed of 18 knots, she cruises at 14 knots and has a maximum range of 5,000nm. Zero speed stabilisers ensure comfort at anchor on arrival.

## Key features

---

**2021 built Codecasa**

---

**Expansive sun deck pool**

---

**Light and only private owners use**

---

**Elevator serving all decks**

---

**Timeless and classical Tommaso Spadolini interior**

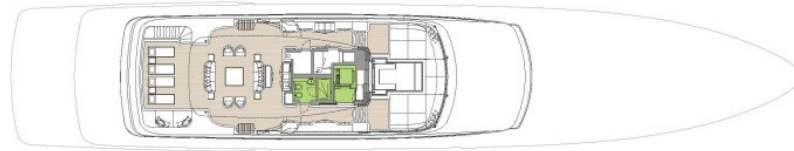
---

**LY3 compliant**

---

**Unmatched volume at 887 GT, making her the best value among 50m+ sub-500GT yachts**

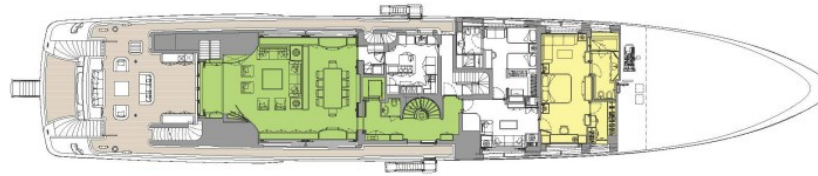
---



SUN DECK



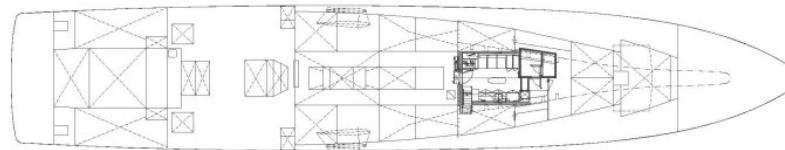
BRIDGE DECK



MAIN DECK



LOWER DECK



TOP TANK DECK

■ GUEST AREAS ■ MASTER SUITE ■ VIP SUITE ■ GUEST CABINS

# BURGESS

# WORLD CLASS. WORLD WIDE.

<b>London</b> +44 20 7766 4300	<b>Monaco</b> +377 97 97 81 21	<b>New York</b> +1 212 223 0410	<b>Miami</b> +1 305 672 0150	<b>Singapore</b> +65 9665 8990	<b>Beverly Hills</b> +1 310 424 5112	<b>Palma</b> +34 971 495 413	<b>Athens</b> +30 210 967 1661
<b>Dubai</b> +971 4 425 5874	<b>Phuket</b> +66 7623 9739	<b>Hong Kong</b> +852 6496 2094	<b>Tokyo</b> +81 46 738 8612	<b>Sydney</b> +61 499 945 557	<b>Mumbai</b> +91 98211 67253	<b>Shanghai</b> +86 187 0898 6800	<b>Rio de Janeiro</b> +55 21 2553-3238
<b>Aspen</b> +1 970 710 2294							

Advertising of these vessel(s) in printed publications, on the internet or in any other medium is not permitted without prior written permission from Burgess. All particulars are given in good faith and are believed correct but they cannot be guaranteed.

Last updated: 26 February 2025