

MOONLIGHT II



MOONLIGHT II

OVERVIEW.

When you want to make an occasion truly special, you charter a yacht. Nothing can match the experience. But for those very special occasions, like anniversaries, family reunions or corporate celebrations, you need a yacht that can welcome more than 12 guests. That's when you charter MOONLIGHT II.

Fresh from an extensive program of improvements and upgrades in summer and winter 2020-21, this 91.4m (299.9ft) yacht welcomes up to 36 guests in 18 sumptuous and adaptable cabins. When you're getting that many people together you need plenty of versatile space inside and out and the widest possible variety of activities and MOONLIGHT II ticks every box.

Her endless feature list includes an elevator serving all guest decks, a 3D cinema, a sun deck bar and jacuzzi refreshed for 2021, a private jacuzzi with sunbathing on the owner's private deck, a beach club with bar and an intimate balcony for two as well as stabilisers that ensure comfort on board whether at sea or at anchor.

There's also a beautifully revamped spa with massage, steam room and sauna, a beauty salon with a qualified hairdresser and beautician and a medical facility. Work out in a fully equipped gym or pump up the adrenalin at the RYA-registered training centre with its selection of watertoys.

Add to that stunning cuisine, impeccable service, opulent Greek-themed interiors perfectly suited to entertaining on a grand scale and swathes of teak deck space offering sun and shade wherever you are, and you have all the makings of an unforgettable occasion.

If you're planning something very special, you can create a lifetime of memories on board MOONLIGHT II, now better than ever after her winter works.

Key features

Health and beauty centre

Beach club at sea level with bar and balcony

Private master deck with jacuzzi

Fully equipped gym

Elevator serving all decks

Cinema

Jacuzzi on sun deck

Approved RYA training centre for guests' use of personal watercraft

Zero speed stabilisers to reduce any rolling motion while at anchor

MOONLIGHT II

Aerial



Main deck aft



Main deck aft



Main deck aft



BURGESS

Discover the difference.
burgessyachts.com



MOONLIGHT II

Main deck lounge



Main deck lounge



Main deck lounge



Main deck lounge



MOONLIGHT II

Main deck dining room



Main deck dining room



Master suite



Master suite



BURGESS

Discover the difference.
burgessyachts.com



MOONLIGHT II

Master study



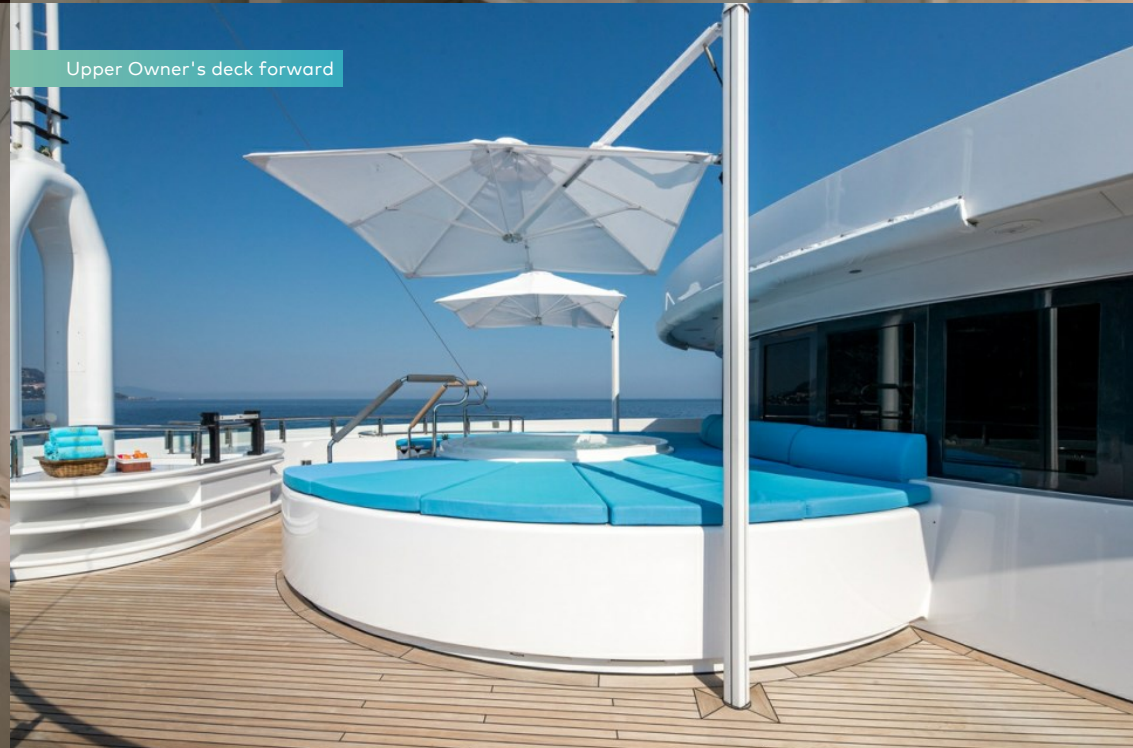
Master bathroom en suite



Master bathroom en suite

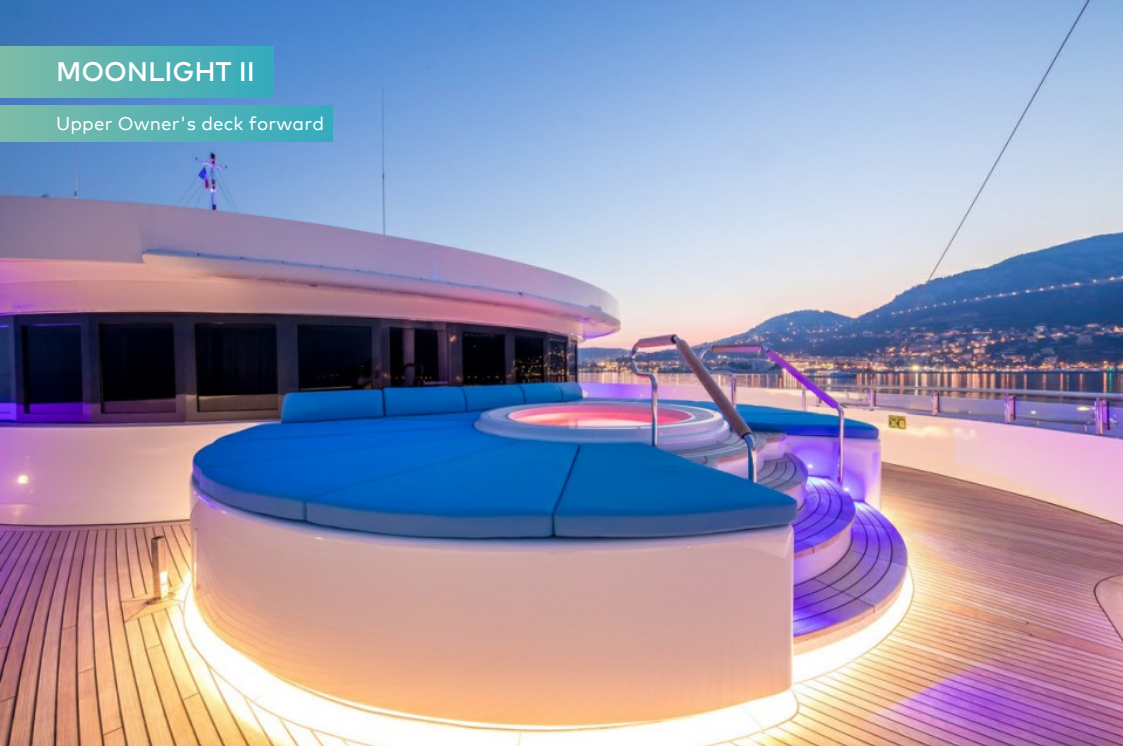


Upper Owner's deck forward



MOONLIGHT II

Upper Owner's deck forward



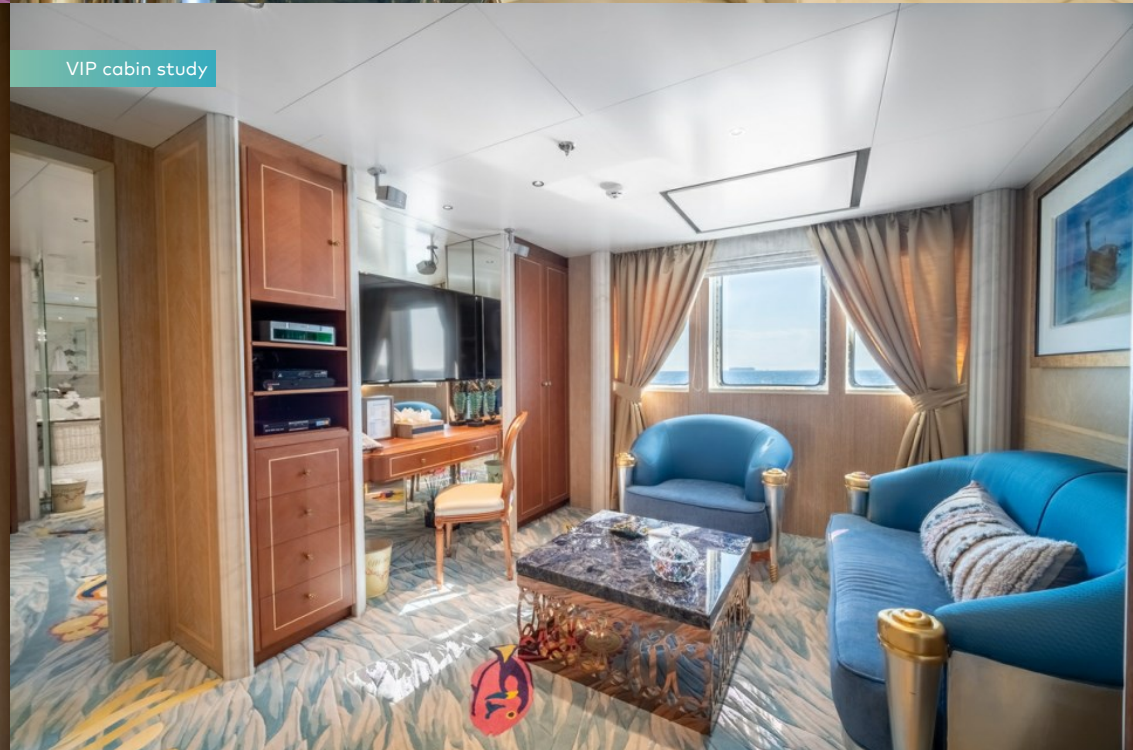
Staircase



VIP Cabin



VIP cabin study



MOONLIGHT II

VIP bathroom en suite



Double cabin



Twin cabin



Twin bathroom en suite



MOONLIGHT II

Double cabin



Double cabin



Double bathroom en suite



Cinema



BURGESS

Discover the difference.
burgessyachts.com



MOONLIGHT II

Bridge deck seating area



Bridge deck seating area



Bridge deck aft dining



Upper lounge



MOONLIGHT II

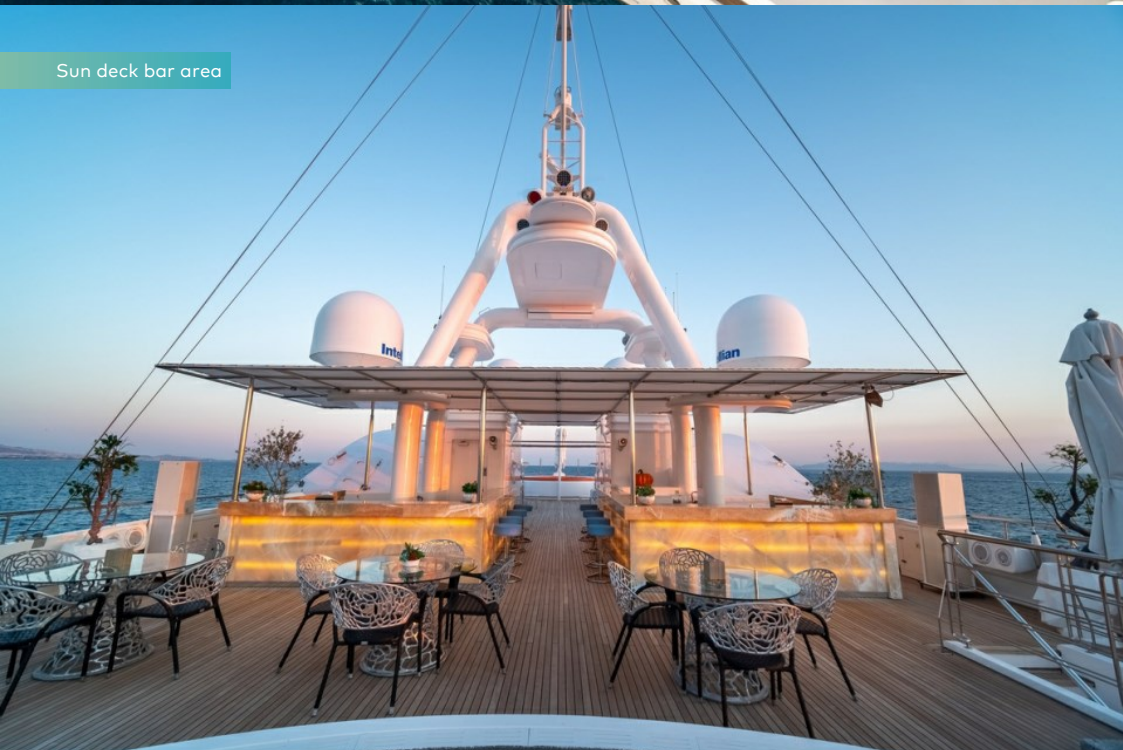
Sun deck



Sun deck



Sun deck bar area



Beach club



BURGESS

Discover the difference.
burgessyachts.com



MOONLIGHT II

Beach club



Beach club bathroom



Beach club balcony



Spa



MOONLIGHT II

Gym



Beauty center



Beauty salon



Massage room



MOONLIGHT II

Beauty salon



Watersport set-up



Cruising



BURGESS

Discover the difference.
burgessyachts.com



MOONLIGHT II

SPECIFICATION.



Length
91.4m (299.9ft)



Built
2005 (refitted 2020), Neorion Syros Shipyards, Greece



Interior designer
Alpha Marine/H. Poulías



Beam
14.5m (47.5ft)



Draft
4.2m (13.8ft)



Gross tonnage
3,052



Cruising speed
12 knots



Maximum speed
13 knots



Fuel consumption at cruising speed
500 litres per hour



Engines
2 x 2,750hp Caterpillar



Guests
36



No. of guest cabins
18 (10 x double, 8 x twin)



Crew
36

Note

Fully licensed for charters in Spanish waters.

[View yacht on website](#)

[Watch yacht video](#)



EQUIPMENT.

Tenders & toys



3 x Tenders



2 x Deck jacuzzis



4 x Waverunners



2 x Stand up jetskis



4 x Underwater scooters



1 x Flyboard



2 x Kayaks



3 x Stand up paddleboards



Wakeboard



Kneeboard



Waterskis



Inflatable tows



Scuba diving equipment



Fishing gear



Snorkelling gear

2 x 7.1m Castoldi jet tenders 23 with 260hp Yanmar diesel engines (max capacity per tender is 12 people) | 5.5m Zodiac tender with 115hp Yamaha engine | 4 x Yamaha FX SVHO Cruiser waverunners | 2 x Sea-Doo underwater scooter | 2 x Sevylor kayaks (1/2 man) | 6 x diving equipment | Waterskis | Wakeboard | Kneeboard & tows | Flyboard | 2 x iAqua underwater scooter | 3 x stand up paddle boards (two of which are inflatables) | Snorkelling gear | Fishing gear

Fitness & wellness



Cross trainer



Free weights



Pedal bike



Resistance bands



Training bench



Treadmill



Upright stationary bike



Yoga mats

Communication & entertainment

State-of-the-art and comprehensive AV system | Indoor and outdoor surround speakers on deck 3 and deck 5 | Kaleidescape Movie server | Cinema | Satellite television channels (where geographically available) | Internal LAN for computers | Immarsat Ship to Earth Station | 4G data communication (where geographically available)

BURGESS

WORLD CLASS. WORLD WIDE.

London +44 20 7766 4300	Monaco +377 97 97 81 21	New York +1 212 223 0410	Miami +1 305 672 0150	Singapore +65 9665 8990	Beverly Hills +1 310 424 5112	Palma +34 971 495 413	Athens +30 210 967 1661
Dubai +971 4 425 5874	Phuket +66 7623 9739	Hong Kong +852 6496 2094	Tokyo +81 46 738 8612	Sydney +61 499 945 557	Mumbai +91 98211 67253	Shanghai +86 187 0898 6800	

Advertising of these vessel(s) in printed publications, on the internet or in any other medium is not permitted without prior written permission from Burgess. All particulars are given in good faith and are believed correct but they cannot be guaranteed.

Last updated: 23 April 2024