

# MISS CHRISTINE



MISS CHRISTINE

# OVERVIEW.

**Swift, opulent and spacious, the 48m (157ft) MISS CHRISTINE provides luxury, elegance and comfort for a perfect Caribbean, Bahamas or New England cruise. Her 20 knot top speed gives her an impressive daily cruising range – ideal for a fast-paced island-hopping holiday. Her moderate draught of 2.3m (7.4ft) opens up beautiful, less crowded places and allows her to anchor close to the beach in popular spots, in more sheltered water. Her wide beam of 8.5m (28ft) and spacious interior offer plenty of living space, with a notably high standard of service from her eight-strong crew.**

A stand-out feature is the elegant interior in mahogany and marble, designed by the renowned Evan K Marshall. Wide salons and lounges with sociable clusters of silk-upholstered seating, ornate ceilings, high-gloss varnished counters, marble-topped bars and gold fittings define her luxurious look and feel.

Huge picture windows in the elevated sky lounge and the large, open-plan main lounge flood these spaces with natural light, giving great views out from everywhere inside. Forward of its bar and spacious lounge, the main saloon's formal dining area seats ten guests in grand style around an intricately crafted table.

The full-beam master suite up front on the main deck is generously sized – even more so than the rest of the yacht – with a separate owner's office, two big walk-in closets, silk sofas and armchairs, a 55-inch Samsung TV with Denon surround sound, a wet bar, ice maker and two impressive marble bathrooms, one with a shower, the other with a bathtub. The four other guest cabins are all located amidships on the lower deck: one VIP double, two large doubles and a twin cabin, all decorated in a similar style to the master suite and well-appointed with entertainment centres, TV screens and private en suite bathrooms.

MISS CHRISTINE offers al fresco dining on three levels – up on the sundeck, which also has a six-person jacuzzi, stylish teak sun loungers, bar, BBQ grill and big TV; around a huge teak table on the air-conditioned upper aft deck, and in the elegant space of the main aft deck. She's also well equipped with watersports gear including a 37ft fast fishing tender, waverunners, SeaBobs, paddle boards, glass-bottom kayaks and more.

## Key features

---

**Recently refitted**

---

**10m Jupiter towed tender**

---

**20m Spencer Sportfish Yacht available in tandem at additional cost**

---

**Jacuzzi on the sun deck**

---

**Zero speed stabilisers to reduce any rolling motion while at anchor**

---



# MISS CHRISTINE

Aerial



Sun deck



Sun deck



Main deck





# MISS CHRISTINE

Main deck



Main deck salon



Main deck



Main deck dining





MISS CHRISTINE

Main deck dining



Sky lounge



Sky lounge



Master cabin





## MISS CHRISTINE

Master cabin en suite



Master cabin en suite



Double cabin



Double cabin en suite





# MISS CHRISTINE

Double cabin



Double cabin en suite



Twin cabin



Twin cabin en suite





# MISS CHRISTINE

Sportfish boat





MISS CHRISTINE

# SPECIFICATION.



Length  
**47.8m (156.9ft)**



Built  
**2006 (refitted 2022), Trinity Yachts, United States Of America**



Interior designer  
**Evan Marshall**



Beam  
**8.5m (27.9ft)**



Draft  
**2.1m (6.9ft)**



Gross tonnage  
**465**



Cruising speed  
**14 knots**



Maximum speed  
**19 knots**



Fuel consumption at cruising speed  
**327 litres per hour**



Engines  
**2 x 2,250hp Caterpillar**



Guests  
**11**



No. of guest cabins  
**5 (4 x double, 1 x twin, 1 x additional berths)**



Crew  
**9**

[View yacht on website](#)





MISS CHRISTINE

# TENDERS & TOYS



1 × Towed tender



1 × Tender



1 × Deck jacuzzi



2 × Waverunners



2 × SeaBobs



2 × Kayaks



2 × Stand up paddleboards



Pedal board



Wakeboard



Kneeboard



Waterskis



Inflatable toys



Fishing gear



Snorkelling gear



MISS CHRISTINE

# FITNESS & WELLNESS



Free weights



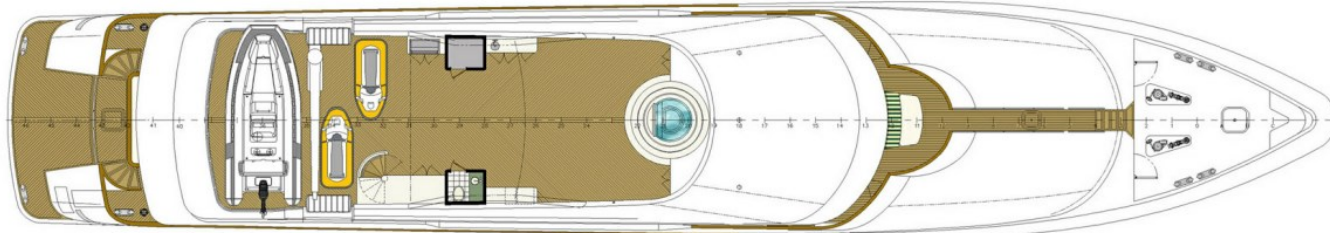
Yoga mats





# MISS CHRISTINE

Deck plans



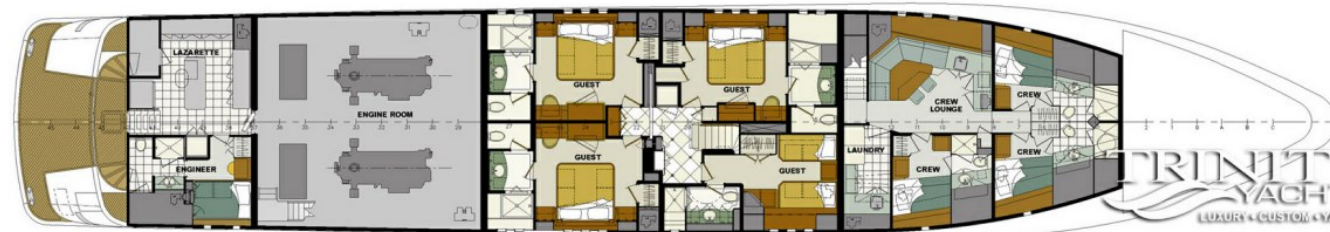
FLYBRIDGE



PILOTHOUSE



MAIN DECK



INTERIOR DECK

TRINITY  
YACHTS  
LUXURY • CUSTOM YACHTS



# BURGESS

# WORLD CLASS. WORLD WIDE.

<b>London</b> +44 20 7766 4300	<b>Monaco</b> +377 97 97 81 21	<b>New York</b> +1 212 223 0410	<b>Miami</b> +1 305 672 0150	<b>Singapore</b> +65 9665 8990	<b>Beverly Hills</b> +1 310 424 5112	<b>Palma</b> +34 971 495 413	<b>Athens</b> +30 210 967 1661
<b>Dubai</b> +971 4 425 5874	<b>Phuket</b> +66 7623 9739	<b>Hong Kong</b> +852 6496 2094	<b>Tokyo</b> +81 46 738 8612	<b>Sydney</b> +61 499 945 557	<b>Mumbai</b> +91 98211 67253	<b>Shanghai</b> +86 187 0898 6800	<b>Rio de Janeiro</b> +55 21 2553-3238

Advertising of these vessel(s) in printed publications, on the internet or in any other medium is not permitted without prior written permission from Burgess. All particulars are given in good faith and are believed correct but they cannot be guaranteed.

Last updated: 10 December 2024