

# METSUYAN IV



METSUYAN IV

# APERÇU.

Having undertaken recent new upgrades, METSUYAN IV is an elegant, luxurious yacht perfect for the holiday of a lifetime. Delivered in Italy in 2006 by CBI Navi this superyacht is stylish and charming, with an exterior designed by Ginton Naval Architecture and an invitingly warm interior designed by Ken Freivokh. This beautiful yacht and her exceptional crew combine for an unforgettable charter experience.

Guests have a practically endless choice of entertainment, and the yacht is an RYA approved watersports training centre. She has a selection of toys and tenders that will bring out everyone's inner child - especially the water trampoline. The very friendly crew can organise land-based excursions and can even give olive oil and grappa tastings on board. A delicious afternoon tea - said to rival that of The Ritz - ensures you have plenty of energy for water-based fun. Guests can relax in the jacuzzi and enjoy the incredible views available in Croatia from one of the many spacious decks. Finish the night at the 3D cinema on the sun deck.

Inside, dark cherry wood and neutral furnishings feel warm and welcoming. METSUYAN IV's layout is spacious, and zero speed stabilisers ensure comfort at all times. She sleeps 10 guests, with each cabin boasting a marble bathroom, the most luxurious bedding and individual device docking stations. The full-beam master suite is on the main deck forward, and the other two forward cabins have an interconnecting door, which is useful for families.

The combination of flawless design, endless on-board fun and a dedicated, award-winning crew make METSUYAN IV an ideal charter option.

## Principales caractéristiques

---

Jacuzzi

---

Outdoor cinema

---

Zero speed stabilisers to reduce any rolling motion while at anchor

---

Approved RYA centre for watersports

---

# METSUYAN IV

Main deck lounge



Main deck dining area



Main deck aft dining area



Bridge deck lounge



METSUYAN IV

Bridge deck lounge



Master cabin



Master cabin study



Master cabin bathroom



# METSUYAN IV

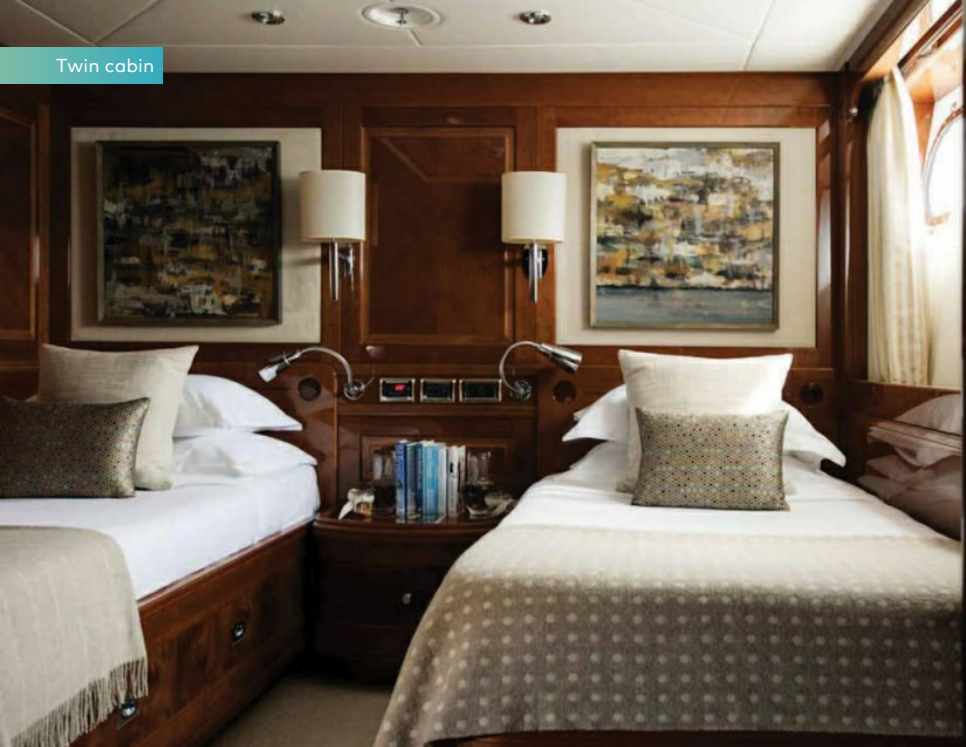
Double cabin



Double cabin bathroom



Twin cabin



Bridge deck dining



METSUYAN IV

Bridge deck dining



Dining details



Bridge deck seating area



Sun deck and upper deck aft



# METSUYAN IV

Sun deck afternoon tea



Sun deck



Sun deck jacuzzi



Sun deck BBQ



METSUYAN IV

Sun deck cinema



At anchor





METSUYAN IV

# SPÉCIFICATIONS.



Longueur  
36,2m



Chantier  
2006, CBI Navi, Italy



Designer d'intérieur  
Ken Freivokh Design



Largeur  
8m



Tirant d'eau  
2,5m



Tonnage brut  
369



Vitesse de croisière  
10 knots



Vitesse maximale  
12 knots



Consommation de carburant en vitesse de croisière  
150 litres par heure



Moteurs  
2 x 535hp MTU



Invités  
10



Nb de cabines invités  
5 (3 x double, 2 x twin)



Équipage  
7

[Voir le yacht sur le site](#)



## Annexes & jeux nautiques

---



2 x Tenders



1 x Deck jacuzzi



Diving board



Trampoline



RYA training centre for jetskis & waverunners



1 x Stand up jetski



2 x Stand up paddleboards



Wakeboard



Waterskis



Inflatable tows



Snorkelling gear

1 x 6.2m BSC tender with 150hp Yamaha engine | 1 x 4.4m BSC tender with 70hp Yamaha engine | 1 x Sea-Doo jet ski (two man) | 2 x paddle boards | 3 x kneeboards | 1 x trampoline | Wakeboards | Waterskis & tows | Snorkelling equipment |

## Remise en forme & bien-être

---



Upright stationary bike

There is an exercise bike which is usually placed on the sun deck so guests can enjoy a work out session while looking out over the beautiful surroundings. Stewardess/masseuse available on board.

## Communication et divertissement

---

Comprehensive audio visual system | Satellite TV | Outdoor cinema | Satcom & cellular communications facilities, VOIP | VSAT | Wi-Fi internet access



# BURGESS

# WORLD CLASS. WORLD WIDE.

London +44 20 7766 4300	Monaco +377 97 97 81 21	New York +1 212 223 0410	Miami +1 305 672 0150	Singapore +65 9665 8990	Beverly Hills +1 310 424 5112	Palma +34 971 495 413	Athens +30 210 967 1661
Dubai +971 4 425 5874	Phuket +66 7623 9739	Hong Kong +852 6496 2094	Tokyo +81 46 738 8612	Sydney +61 499 945 557	Mumbai +91 98211 67253	Shanghai +86 187 0898 6800	

La publicité de ce(s) navire(s) dans des publications imprimées, sur Internet ou sur tout autre support n'est pas autorisée sans l'autorisation écrite préalable de Burgess.  
Toutes les informations sont données de bonne foi et sont considérées comme exactes, mais elles ne peuvent être garanties.

Dernière mise à jour : 25 avril 2024