

# MARIU

---



MARIU

# APERÇU.

Those looking for a stylish charter yacht will find the 49.9m (163.7ft) MARIU the very height of fashion. Oozing style and cool sophistication, her build was commissioned by the iconic fashion designer Giorgio Armani. His unique design and vision are evident throughout the open plan saloons and minimalist outdoor guest areas.

Boarding MARIU from her swim platform, walk up the sweeping steps onto her main deck aft where the crew will greet you with a warm welcome. You won't want to delay heading up to the large sun deck, with its jacuzzi, loungers and sit-up bar. Spend some time here acclimatising to life on board, soaking up the sun before taking a tour of the yacht. Note the enormous dining tables that sit beneath canopies for cool shade – the perfect spot for al fresco lunch. Enjoy fresh cuisine with Mediterranean and Asian influences prepared by the talented Italian chef, before relaxing on the upper deck beneath the shade of an awning.

Come the afternoon and MARIU will display another of her strengths, offering a myriad selection of watersports for all capabilities. As an RYA approved training centre for personal watercraft, guests can gain a temporary license to ride the jetskis and waverunners for the duration of the yacht charter. The yacht's toy box is also bursting at the seams with SeaBobs, a hoverboard, scuba diving equipment and all manner of towable toys to amuse yourself in the waters around the yacht.

Back on board, MARIU's guest areas are ideally set up for families and friends to socialise together while still allowing her guests to find space for some quiet time if desired. Forward on the main deck, for example, is a large circular lounge area, the perfect spot for privacy when berthed stern to, while her bridge deck saloon is filled with sumptuous sofas.

Dinner can be served al fresco on the bridge deck or main deck aft or, should the weather demand it, in the formal dining lounge. An elevator connects all four decks, so elderly guests and perhaps those who have exhausted themselves with the watersports can retire to one of MARIU's sumptuous cabins without taking the stairs. With a full beam master and a double cabin on the main deck, and four further doubles on the lower deck, guests will be ensconced in luxury 24/7.

## Principales caractéristiques

---

Recently refitted

---

Regularly maintained

---

Exercise equipment on the sun deck

---

Shaded deck dining and deck areas

---

Elevator serving from lower to bridge decks

---

Jacuzzi on the sun deck

---

Zero speed stabilisers to reduce any rolling motion while at anchor

---



MARIU

Sun deck seating area



Sun deck loungers



Sun deck loungers



Bridge deck aft dining area



BURGESS

Discover the difference.  
burgessyachts.com





## MARIU

Bridge deck aft dining area



Main deck lounge



Main deck dining area



Sky lounge





## MARIU

Main deck master cabin



Main deck master bathroom en suite



Stand up paddle board



BURGESS

Discover the difference.  
[burgessyachts.com](http://burgessyachts.com)



MARIU

# SPÉCIFICATIONS.



Longueur  
**49,9m**



Chantier  
**2003 (refitted 2021), Codecasa, Italy**



Designer d'intérieur  
**Giorgio Armani/Della Role Design**



Largeur  
**9,5m**



Tirant d'eau  
**3,4m**



Tonnage brut  
**594**



Vitesse de croisière  
**14 knots**



Vitesse maximale  
**17,5 knots**



Consommation de carburant en vitesse de croisière  
**620 litres par heure**



Moteurs  
**2 x 2 200hp Caterpillar**



Invités  
**12**



Nb de cabines invités  
**6 (5 x double, 1 x double/twin, 2 x additional berths)**



Équipage  
**11**

[Voir le yacht sur le site](#)



BURGESS

Discover the difference.  
burgessyachts.com



## Annexes & jeux nautiques

---



1 × Towed tender



1 × Tender



1 × Deck jacuzzi



Inflatable platform



RYA training centre for jetskis  
& waverunners



2 × Waverunners



2 × SeaBobs



1 × Flyboard



1 × Jetsurf



3 × Kayaks



2 × Stand up paddleboards



Wakeboard



Wakesurf



Kneeboard



Kite surfing equipment



Windsurfer



Waterskis



Inflatable tows



Scuba diving equipment



Fishing gear



Snorkelling gear

# Remise en forme & bien-être

---



Balance trainer



Cross trainer



Exercise balls



Free weights



Jump ropes



Resistance bands



Suspension trainer



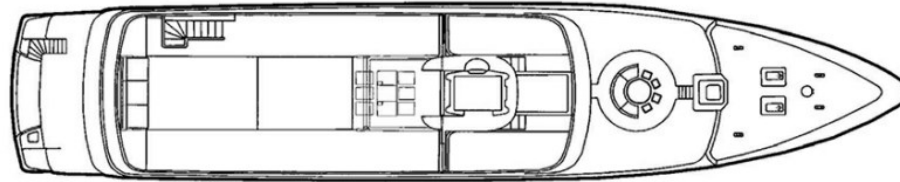
Upright stationary bike



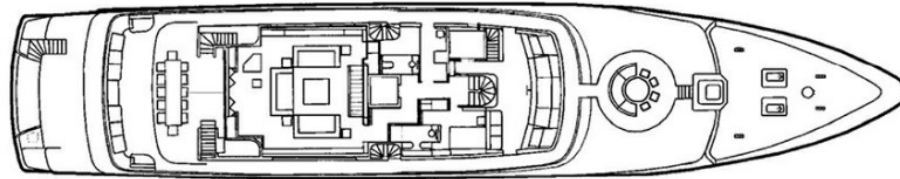
Yoga mats



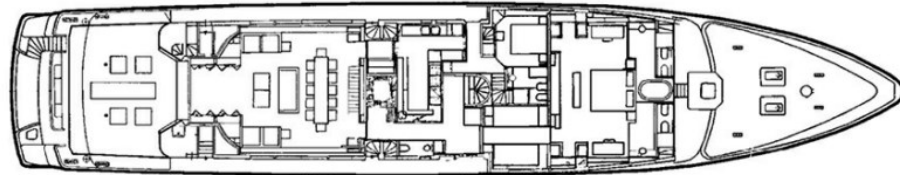
MARIU – GA



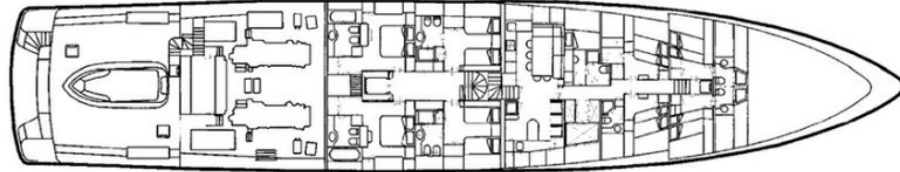
SUN DECK



BRIDGE DECK



MAIN DECK



LOWER DECK

# BURGESS

# WORLD CLASS. WORLD WIDE.

London +44 20 7766 4300	Monaco +377 97 97 81 21	New York +1 212 223 0410	Miami +1 305 672 0150	Singapore +65 9665 8990	Beverly Hills +1 310 424 5112	Palma +34 971 495 413	Athens +30 210 967 1661
	Dubai +971 4 425 5874	Phuket +66 7623 9739	Hong Kong +852 6496 2094	Tokyo +81 46 738 8612	Sydney +61 499 945 557	Mumbai +91 98211 67253	

La publicité de ce(s) navire(s) dans des publications imprimées, sur Internet ou sur tout autre support n'est pas autorisée sans l'autorisation écrite préalable de Burgess.  
Toutes les informations sont données de bonne foi et sont considérées comme exactes, mais elles ne peuvent être garanties.

Dernière mise à jour : 01 mars 2024