

# MAGNA GRECIA

---



MAGNA GRECIA

# SPÉCIFICATIONS.



Prix demandé  
EUR 15 000 000



Chantier  
1986 (rebuilt 2019, refitted 2019), Elsflether  
Werft, Germany



Longueur  
63,8m



Largeur  
8,9m



Tirant d'eau  
3,8m



Tonnage brut  
850



Vitesse de croisière  
14 knots



Vitesse maximale  
15 knots



Autonomie  
4 300 nm



Pavillon  
Marshall Islands



Position  
East Mediterranean



Classe  
Bureau Veritas (MCA Compliant)



Designer extérieur  
Hans M Huchzermeier



Designer d'intérieur  
Francesco Paszkowski Design



Construction  
Hull - Steel, Superstructure - Aluminium



Équipage  
15



Invités  
12



Cabines  
6 (4 × double, 2 × twin)



Moteurs  
2 × 1 550hp Caterpillar



Propulsion  
Twin screw diesel yacht

[Voir le yacht sur le site](#)

[Regarder la vidéo du yacht](#)



## MAGNA GRECIA

Bridge deck lounge



Bridge deck lounge



Master suite



## MAGNA GRECIA

Master suite



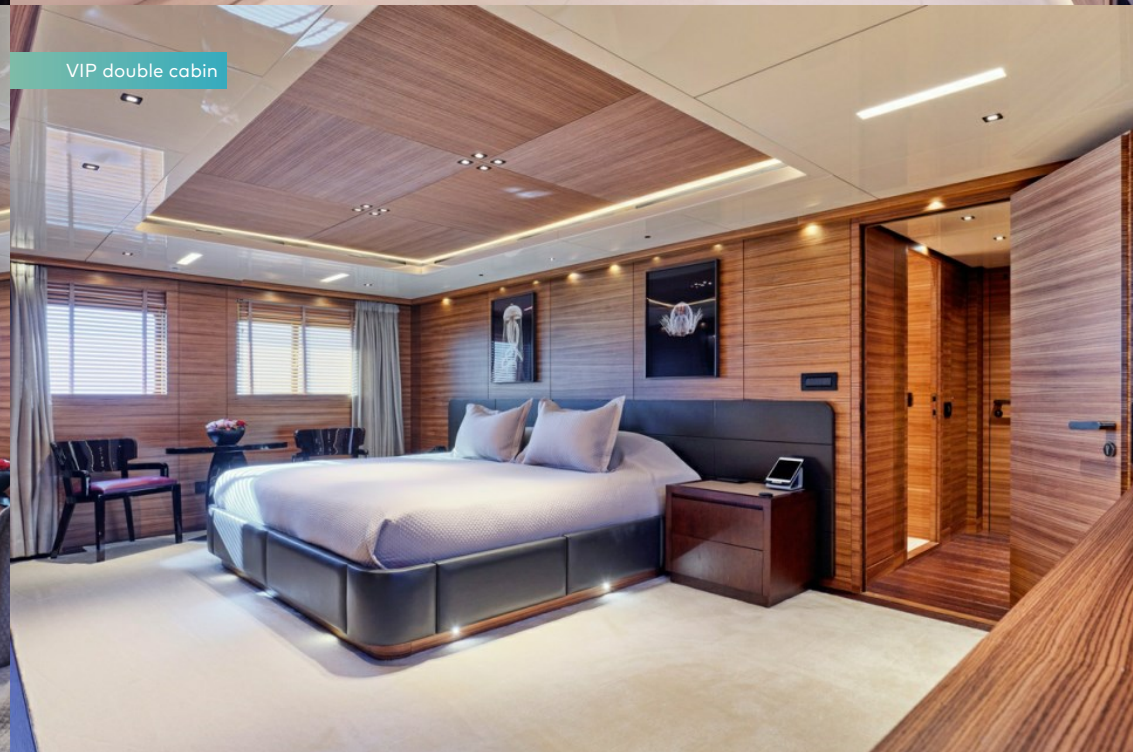
Master bathroom 'her' en suite



VIP double cabin



VIP double cabin



MAGNA GRECIA

Private study



BURGESS

Discover the difference.  
burgessyachts.com



MAGNA GRECIA



Twin cabin



MAGNA GRECIA



BURGESS

Discover the difference.  
[burgessyachts.com](http://burgessyachts.com)



MAGNA GRECIA



BURGESS

Discover the difference.  
[burgessyachts.com](http://burgessyachts.com)



MAGNA GRECIA



BURGESS

Discover the difference.  
[burgessyachts.com](http://burgessyachts.com)



## MAGNA GRECIA

Master suite private balcony



## MAGNA GRECIA



BURGESS

Discover the difference.  
[burgessyachts.com](http://burgessyachts.com)



MAGNA GRECIA

# APERÇU.

The 63.8m (209.3ft) MAGNA GRECIA has a steel hull and aluminium superstructure built to Bureau Veritas classification and MCA compliance, and delivered in 1986 by the iconic German shipyard Elsfl ether Werft. Following an award-winning 24-month rebuild and refit that finished in 2019, she is an in-demand, Greek-licensed Burgess charter yacht.

These works included an extension from 58.5m (191.9ft) to her current length to accommodate a new garage area for a large tender and five jetskis. She also received a full repaint, all her machinery was overhauled and she is currently in excellent working condition.

Her sun deck was widened by moving funnels outboard and covered by a new 35sqm (376.7sqft) hardtop. Teak decking was replaced, a Villery & Boch jacuzzi was installed along with a 25sqm (269.1sqft) fully equipped bar. A dayhead with shower was added, jetski deck cranes were removed and nightclub-standard lighting, smoke and sound systems were fitted.

All interiors were fully replaced, new lighting and a Kaleidescape AV system were installed throughout. A large owner's study was added on the main deck and a folding balcony was built into the owner's bedroom suite.

The main deck saloon and dining room area also serves as a cinema room for movie nights. On the bridge deck aft a new open-air dining area was created with a table that can be one large table or two smaller tables. The sun lounge aft also suits for casual dining, shaded by all-new awnings.

She welcomes 12 guests in six suites plus an additional luxury pullman berth in the owner's office. On the main deck the owner's suite is forward, with his-and-hers en suites and a large walk-in wardrobe, and the VIP suite is aft between the saloon and the owner's office. The lower deck is home to two convertible suites and two further convertible suites on the bridge deck complete her versatile accommodation. She also sleeps 15 crew to ensure high service levels.

Twin 1,550hp Caterpillar diesel engines give her a top speed of 15 knots, a cruising speed of 14 knots and a range of 6,000nm at her passage speed of 12 knots. As you would expect from a popular charter yacht, she has a wide inventory of tenders and watertoys.

## Principales caractéristiques

---

**German pedigree yacht with highly reliable stability and sea keeping**

---

**Completely brand-new interior installed in 2019**

---

**Proven world-wide cruising platform (including Polar Code)**

---

**Heli- capable with a bolt on / off deck that can also carry up to a 14m tender**

---

**Highly successful charter operation with positive Net returns to her owner**

---

**Turn-key ready for immediate sailing with all surveys and annuals up to date**

---

## Annexes

---

8.5m Protector RIB/YAMAHA 250 HPx2, 5.5m Castoldi RESCUE/YANMAR 180 HP



SUN DECK



UPPER DECK



MAIN DECK



LOWER DECK

■ GUEST AREAS ■ MASTER SUITE ■ VIP SUITE ■ GUEST CABINS ■ CINEMA ■ JACUZZI

# BURGESS

# WORLD CLASS. WORLD WIDE.

London	Monaco	New York	Miami	Singapore	Beverly Hills	Palma	Athens
+44 20 7766 4300	+377 97 97 81 21	+1 212 223 0410	+1 305 672 0150	+65 9665 8990	+1 310 424 5112	+34 971 495 413	+30 210 967 1661
Dubai	Phuket	Hong Kong	Tokyo	Sydney	Mumbai	Shanghai	
+971 4 425 5874	+66 7623 9739	+852 6496 2094	+81 46 738 8612	+61 499 945 557	+91 98211 67253	+86 187 0898 6800	

La publicité de ce(s) navire(s) dans des publications imprimées, sur Internet ou sur tout autre support n'est pas autorisée sans l'autorisation écrite préalable de Burgess.  
Toutes les informations sont données de bonne foi et sont considérées comme exactes, mais elles ne peuvent être garanties.

Dernière mise à jour : 01 mai 2024