

MAGNA GRECIA



MAGNA GRECIA

SPECIFICATION.



Asking price
EUR 15,000,000



Built
1986 (rebuilt 2019, refitted 2019), Elsflether
Werft, Germany



Length
63.8m (209.3ft)



Beam
8.9m (29.2ft)



Draft
3.8m (12.5ft)



Gross tonnage
850



Cruising speed
14 knots



Maximum speed
15 knots



Range
4,300 nm



Flag
Marshall Islands



Lying
East Mediterranean



Class
Bureau Veritas (MCA Compliant)



Exterior designer
Hans M Huchzermeier



Interior designer
Francesco Paszkowski Design



Construction
Hull - Steel, Superstructure - Aluminium



Crew
15



Guests
12



Cabins
6 (4 x double, 2 x twin)



Engines
2 x 1,550hp Caterpillar



Propulsion
Twin screw diesel yacht

[View yacht on website](#)

[Watch yacht video](#)



MAGNA GRECIA

Bridge deck lounge



Bridge deck lounge



Master suite



MAGNA GRECIA

Master suite



Master bathroom 'her' en suite



VIP double cabin



VIP double cabin



MAGNA GRECIA

Private study



BURGESS

Discover the difference.
burgessyachts.com



MAGNA GRECIA



Twin cabin



BURGESS

Discover the difference.
burgessyachts.com



MAGNA GRECIA



BURGESS

Discover the difference.
burgessyachts.com



MAGNA GRECIA



BURGESS

Discover the difference.
burgessyachts.com



MAGNA GRECIA



BURGESS

Discover the difference.
burgessyachts.com



MAGNA GRECIA

Master suite private balcony



MAGNA GRECIA



BURGESS

Discover the difference.
burgessyachts.com



OVERVIEW.

The 63.8m (209.3ft) MAGNA GRECIA has a steel hull and aluminium superstructure built to Bureau Veritas classification and MCA compliance, and delivered in 1986 by the iconic German shipyard Elsflether Werft. Following an award-winning 24-month rebuild and refit that finished in 2019, she is an in-demand, Greek-licensed Burgess charter yacht.

These works included an extension from 58.5m (191.9ft) to her current length to accommodate a new garage area for a large tender and five jetskis. She also received a full repaint, all her machinery was overhauled and she is currently in excellent working condition.

Her sun deck was widened by moving funnels outboard and covered by a new 35sqm (376.7sqft) hardtop. Teak decking was replaced, a Villery & Boch jacuzzi was installed along with a 25sqm (269.1sqft) fully equipped bar. A dayhead with shower was added, jetski deck cranes were removed and nightclub-standard lighting, smoke and sound systems were fitted.

All interiors were fully replaced, new lighting and a Kaleidescape AV system were installed throughout. A large owner's study was added on the main deck and a folding balcony was built into the owner's bedroom suite.

The main deck saloon and dining room area also serves as a cinema room for movie nights. On the bridge deck aft a new open-air dining area was created with a table that can be one large table or two smaller tables. The sun lounge aft also suits for casual dining, shaded by all-new awnings.

She welcomes 12 guests in six suites plus an additional luxury pullman berth in the owner's office. On the main deck the owner's suite is forward, with his-and-hers en suites and a large walk-in wardrobe, and the VIP suite is aft between the saloon and the owner's office. The lower deck is home to two convertible suites and two further convertible suites on the bridge deck complete her versatile accommodation. She also sleeps 15 crew to ensure high service levels.

Twin 1,550hp Caterpillar diesel engines give her a top speed of 15 knots, a cruising speed of 14 knots and a range of 6,000nm at her passage speed of 12 knots. As you would expect from a popular charter yacht, she has a wide inventory of tenders and watertoys.

Key features

German pedigree yacht with highly reliable stability and sea keeping

Completely brand-new interior installed in 2019

Proven world-wide cruising platform (including Polar Code)

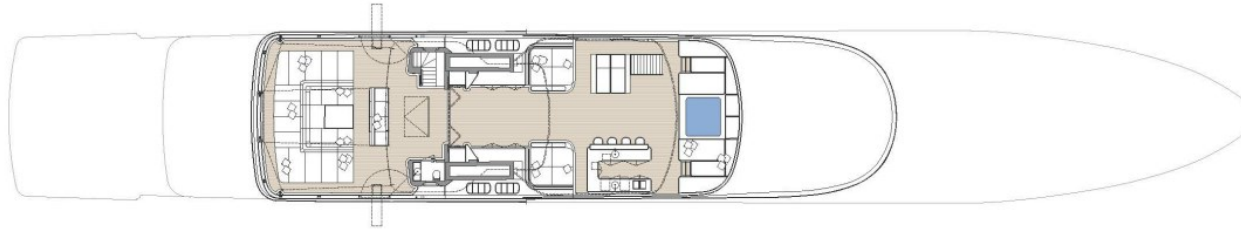
Heli- capable with a bolt on / off deck that can also carry up to a 14m tender

Highly successful charter operation with positive Net returns to her owner

Turn-key ready for immediate sailing with all surveys and annuals up to date

Tenders

8.5m Protector RIB/YAMAHA 250 HPx2, 5.5m Castoldi RESCUE/YANMAR 180 HP



SUN DECK



UPPER DECK



MAIN DECK



LOWER DECK

■ GUEST AREAS ■ MASTER SUITE ■ VIP SUITE ■ GUEST CABINS ■ CINEMA ■ JACUZZI

BURGESS

WORLD CLASS.
WORLD WIDE.

London +44 20 7766 4300	Monaco +377 97 97 81 21	New York +1 212 223 0410	Miami +1 305 672 0150	Singapore +65 9665 8990	Beverly Hills +1 310 424 5112	Palma +34 971 495 413	Athens +30 210 967 1661
Dubai +971 4 425 5874	Phuket +66 7623 9739	Hong Kong +852 6496 2094	Tokyo +81 46 738 8612	Sydney +61 499 945 557	Mumbai +91 98211 67253	Shanghai +86 187 0898 6800	

Advertising of these vessel(s) in printed publications, on the internet or in any other medium is not permitted without prior written permission from Burgess. All particulars are given in good faith and are believed correct but they cannot be guaranteed.

Last updated: 01 May 2024