

# LUPUS MARE



LUPUS MARE

# APERÇU.

**Set sail on an island-hopping adventure cruise in the breathtakingly beautiful, sheltered waters of Croatia. The 43-metre (149ft) mini cruise ship LUPUS MARE offers a refined and intimate holiday experience, visiting the highlights of the scenic mainland coast as well as the best of the myriad islands on the eastern side of the Adriatic Sea.**

Designed and purpose-built to cruise the Adriatic, LUPUS MARE was upgraded a few years ago in a major refit. She offers a comfortable cruising experience with ample wi-fi connectivity and a private en suite bathroom in each of her 20 guest cabins, with attentive service from an experienced crew of six. Double, twin and triple cabins are available, all with air conditioning.

A highlight on board is the 250 square metre sundeck, which offers an elevated, commanding view of the seascape as the vessel threads her way through groups of small islands and along the sheer green slopes of the heavily indented coast. There's a choice between sun loungers or seats around tables, and you can choose to be in full sun or shade. She also has two exterior deck spaces facing aft and a Portuguese bridge in front of the wheelhouse, so there's plenty of outside space to enjoy.

Her interior spaces include a huge upper deck saloon with comfortable seats at sociable round tables, clusters of sofas and a sit-up bar. There are also some smaller nooks with armchairs and sofas where smaller groups can gather to chat, or just relax and unwind. The onboard chef sources fine local ingredients from the places you'll visit on your cruise and dishes up Croatian and Mediterranean cuisine.

The cruise itinerary will venture off the beaten track, taking in hidden gems and visiting special places among the islands that regular cruise ships cannot reach. Your leisure time can include dinghy trips to isolated coves and beaches, snorkelling sessions in clear waters teeming with marine life, and floating on inflatable day beds in the warm, calm sea. Some evenings you'll be in historic harbours lined with ancient Venetian architecture, at other times you'll be anchored for the night in a remote and tranquil bay, far from any light pollution, with an astonishing view of the stars.

## Principales caractéristiques

---

**Regularly maintained**

---

**Flexible cabin configurations**

---

**Low fuel consumption**

---

**Cinema room**

---

**A crew with local expertise**

---

**Exercise equipment**

---

# LUPUS MARE

Aerial view



# Lifestyle



# Sun deck



# Sun deck



# LUPUS MARE

Main deck aft



Main deck dining room



Main deck dining room



Main deck lounge



# LUPUS MARE

Main deck lounge



Lower deck double cabin



Lower deck double cabin



Lower deck twin cabin



# LUPUS MARE

Sauna



Cym



Cym



Lifestyle



LUPUS MARE

Lifestyle



Lifestyle



BURGESS

Discover the difference.  
burgessyachts.com



LUPUS MARE

# SPECIFICATIONS.



Longueur  
**43m**



Chantier  
**2011 (refitted 2018), Almissa Yachts/ Radez d.d. Blato**



Largeur  
**8,9m**



Tirant d'eau  
**2,8m**



Tonnage brut  
**499**



Vitesse de croisière  
**8,5 knots**



Vitesse maximale  
**12,5 knots**



Consommation de carburant en vitesse de croisière  
**150 litres par heure**



Moteurs  
**2 x 800hp MAN**



Invités  
**34**

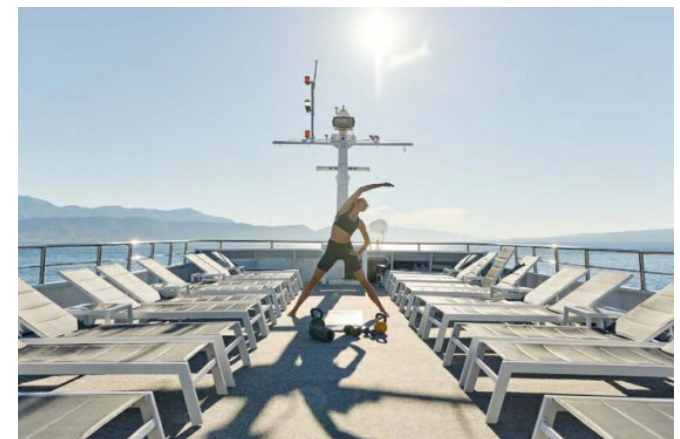


Nb de cabines invités  
**14 (8 x double, 6 x twin, 6 x additional berths)**



Équipage  
**10**

[Voir le yacht sur le site](#)  
[Regarder la vidéo du yacht](#)





LUPUS MARE

# ANNEXES & JEUX NAUTIQUES



1 × Tender



1 × Waverunner



1 × SeaBob



1 × Underwater scooter



2 × Kayaks



2 × Stand up paddleboards



Waterslide



Inflatable toys



Snorkelling gear



Fishing gear

LUPUS MARE

# REMISE EN FORME & BIEN-ETRE



Exercise balls



Free weights



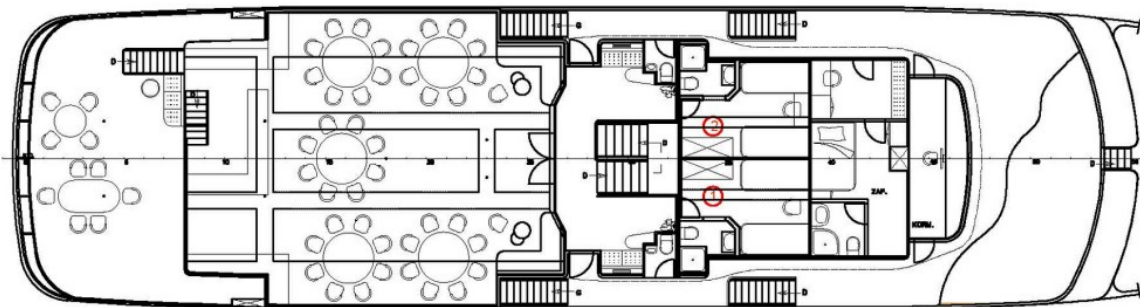
Jump ropes



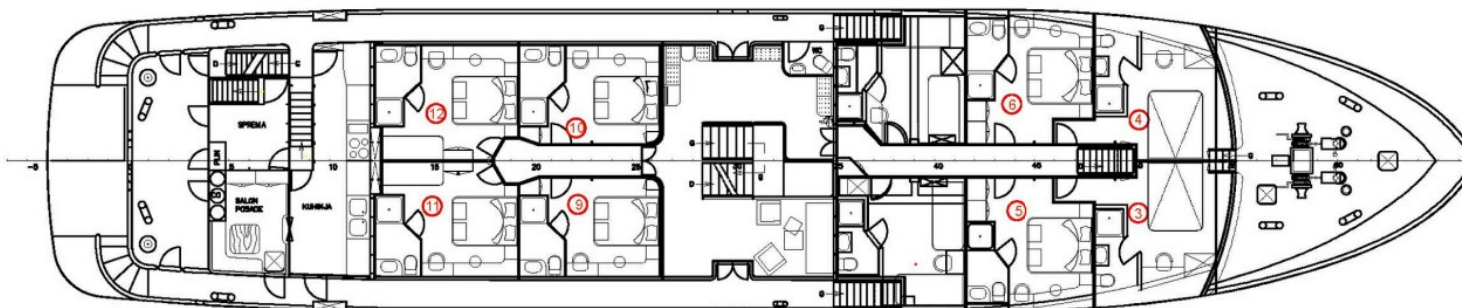
Suspension trainer



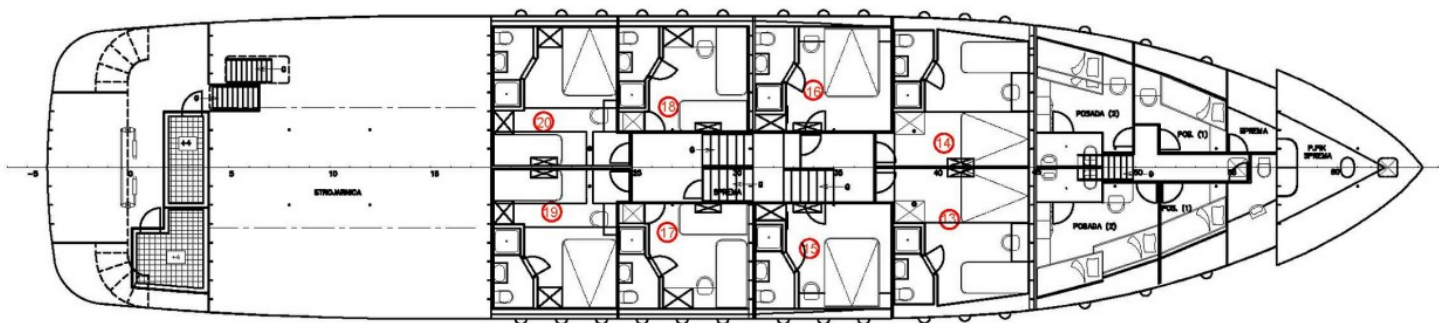
Yoga mats



GORNJA PALUBA



GLAVNA PALUBA – KAŠTEL



TRUP

# BURGESS

# WORLD CLASS. WORLD WIDE.

<b>London</b> +44 20 7766 4300	<b>Monaco</b> +377 97 97 81 21	<b>New York</b> +1 212 223 0410	<b>Miami</b> +1 305 672 0150	<b>Singapore</b> +65 9665 8990	<b>Beverly Hills</b> +1 310 424 5112	<b>Palma</b> +34 971 495 413	<b>Athens</b> +30 210 967 1661
<b>Dubai</b> +971 4 425 5874	<b>Phuket</b> +66 7623 9739	<b>Hong Kong</b> +852 6496 2094	<b>Tokyo</b> +81 46 738 8612	<b>Sydney</b> +61 499 945 557	<b>Mumbai</b> +91 98211 67253	<b>Shanghai</b> +86 187 0898 6800	<b>Rio de Janeiro</b> +55 21 2553-3238
<b>Aspen</b> +1 970 710 2294							

La publicité de ce(s) navire(s) dans des publications imprimées, sur Internet ou sur tout autre support n'est pas autorisée sans l'autorisation écrite préalable de Burgess.  
Toutes les informations sont données de bonne foi et sont considérées comme exactes, mais elles ne peuvent être garanties.

Dernière mise à jour : 21 février 2025