

LUNA



LUNA

APERÇU.

A 90-metre (295ft) quad-deck yacht from the elite Oceanco shipyard, LUNA puts privacy right at the top of her impressive list of special features with a magnificent owner's deck that is specifically designed for total discretion. Special glazing throughout the vessel ensures that guests can enjoy their holiday away from prying eyes.

LUNA has two separate heli decks: one up top facing aft, which also serves as an open sundeck with a couple of hooded day beds, and a second helipad on the foredeck. Her other stand-out exterior features are a swimming pool with a counter current system on the upper aft deck, which is flanked by lounges and a sublime outdoor dining space, and a beach club in her stern with a bar and lounge – the launch pad for her huge array of watersports equipment and toys.

Step on board from the sea-level boarding platform amidships and an elevator will whisk you up to the three main levels of guest accommodation, which are elegant and bright with floor-to-ceiling windows throughout, so every space has a stunning view of the seascape. On the main deck there's a spectacular spa with a massage and therapy room, sauna and hammam, as well as a large and comprehensively equipped gym. The main deck saloon has a large and sociable lounge with a bar, games and TV areas and a separate fine dining space with an 18-seat table.

The upper deck bar and lounge flow seamlessly out into the huge outdoor area with its big oval pool, creating the perfect party zone. There's also a dedicated TV lounge on this level, ideal for movies, gaming and more. The onboard entertainment system is a remarkable feature in its own right, with huge libraries of films and music, a choice of streaming services and satellite connectivity in the world's major cruising grounds.

The top level of LUNA's guest accommodation is the amazing inner sanctum of this incredible yacht: the completely private owner's deck. Here you'll have a living room with breathtaking views facing forward, looking out onto your personal terrace with a big jacuzzi that enjoys total seclusion. There's also a spa tub in the grand en suite bathroom which is fully glazed for uninterrupted sea views as you bathe, and a large, separate dressing room accessed from the opposite side of the owner's cabin. The cabin itself looks aft with glass doors opening onto another private outdoor space with sofas in full shade and a 360° rotating daybed.

Principales caractéristiques

Multi-award winning yacht

New to the charter market

Recently refitted

Wheelchair friendly

Spa facilities: sauna, hammam, massage/beauty salon

Beach club at sea level

Private owner's deck

A fully equipped gym

Helipad

Hodgdon Yachts custom open tender of 10.5m, Hodgdon Yachts custom limo tender of 10.5m, Cobra Patronus crew tender of 6.2m

Cinema room

An elevator serving 3 decks

Counter current pool on the upper deck

Zero speed stabilisers to reduce any rolling motion while at anchor

LUNA

Aerial view



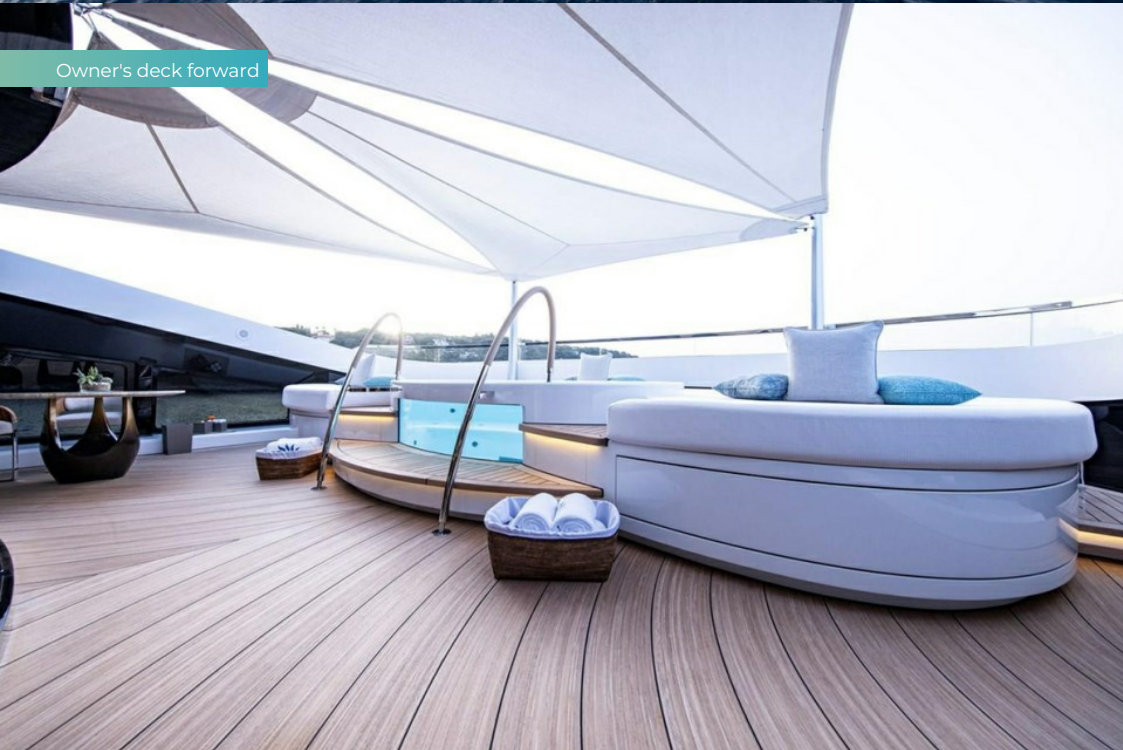
Stern view



Owner's deck forward jacuzzi



Owner's deck forward



BURGESS

Discover the difference.
burgessyachts.com



LUNA

Owner's deck forward



Owner's deck forward



Owner's deck aft



Owner's deck aft



LUNA

Owner's deck aft



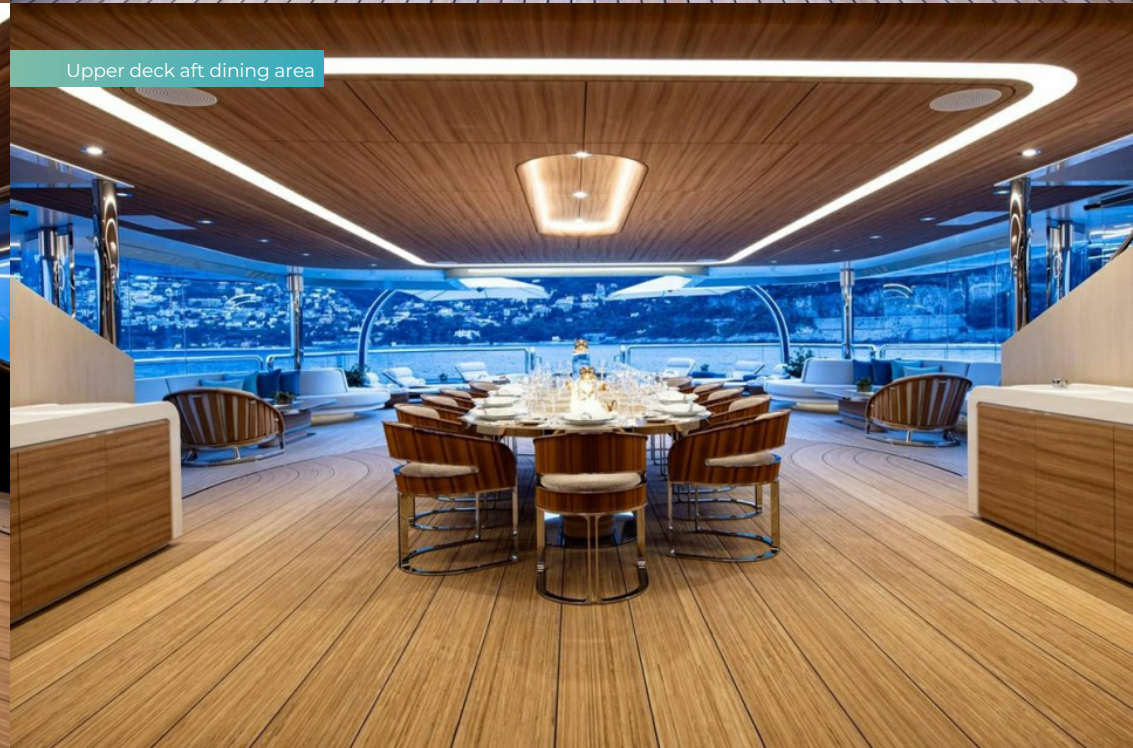
Owner's deck aft



Upper deck aft dining area



Upper deck aft dining area



LUNA

Upper deck aft jacuzzi



Upper deck aft



Beach club



Beach club



LUNA

Beach club



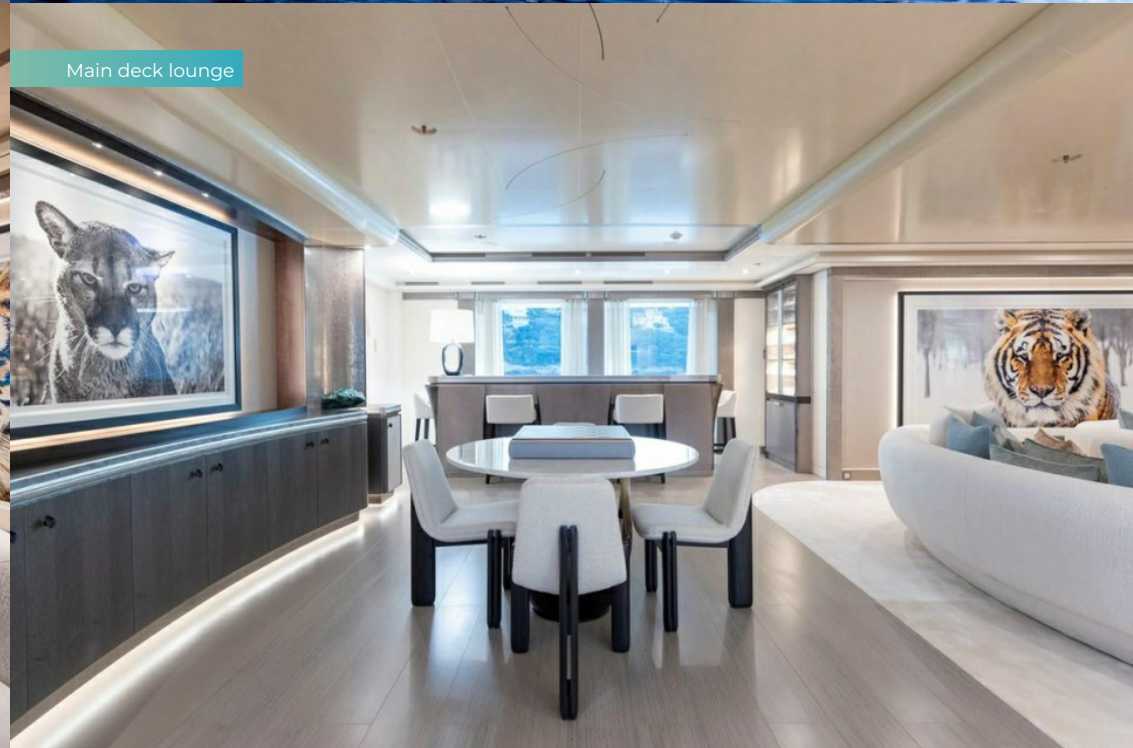
Lower deck sea terrace



Main deck lounge



Main deck lounge



BURGESS

Discover the difference.
burgessyachts.com



LUNA

Main deck dining area



Sky lounge



Sky lounge



Master cabin



BURGESS

Discover the difference.
burgessyachts.com



LUNA

Owner's deck



Owner's deck lounge



Master bathroom en suite



Master bathroom en suite



LUNA

VIP cabin



VIP cabin



Double cabin



Guest bathroom en suite



BURGESS

Discover the difference.
burgessyachts.com



LUNA

Double cabin



Hair salon



Massage room



Hamam



BURGESS

Discover the difference.
burgessyachts.com



LUNA

Sauna



Cym



Cym



Tender



BURGESS

Discover the difference.
burgessyachts.com



LUNA

Tenders



At anchor



BURGESS

Discover the difference.
burgessyachts.com



LUNA

SPECIFICATIONS.



Longueur
90m



Chantier
2018 (refitted 2024), Oceanco, The Netherlands



Designer d'intérieur
Nuvolari & Lenard



Largeur
14,2m



Tirant d'eau
4,1m



Tonnage brut
2 926



Vitesse de croisière
13 knots



Vitesse maximale
20 knots



Consommation de carburant en vitesse de croisière
680 litres par heure



Moteurs
2 x 4 828hp MTU



Invités
12



Nb de cabines invités
7 (7 x double)



Équipage
30

[Voir le yacht sur le site](#)
[Regarder la vidéo du yacht](#)



BURGESS

Discover the difference.
burgessyachts.com



LUNA

ANNEXES & JEUX NAUTIQUES



1 × Towed tender



1 × Limousine tender



2 × Tenders



1 × Sailing dinghy



1 × Deck jacuzzi



Pool



3 × Waverunners



4 × SeaBobs



1 × eFoil



1 × Jetsurf



6 × Kayaks



2 × Stand up paddleboards



Windsurfer



Wakeboard



Kneeboard



Kite surfing equipment



Waterskis



Anti-jellyfish pool



Inflatable platform



Waterslide



Inflatable tows



Zorb



Dive centre



Scuba diving equipment



Snorkelling gear



Air drone



Water drone



RYA training centre for jetskis
& waverunners



5 × eBikes

LUNA

REMISE EN FORME & BIEN-ETRE



Cross trainer



Free weights



Treadmill



Upright stationary bike



Yoga mats



Beauty salon



Hammam/Steam room



Massage room



On board masseuse



Sauna

LUNA

COMMUNICATION ET DIVERTISSEMENT



Satcom & cellular
communications facilities



Wi-Fi internet access



Starlink



Satellite television



Indoor cinema



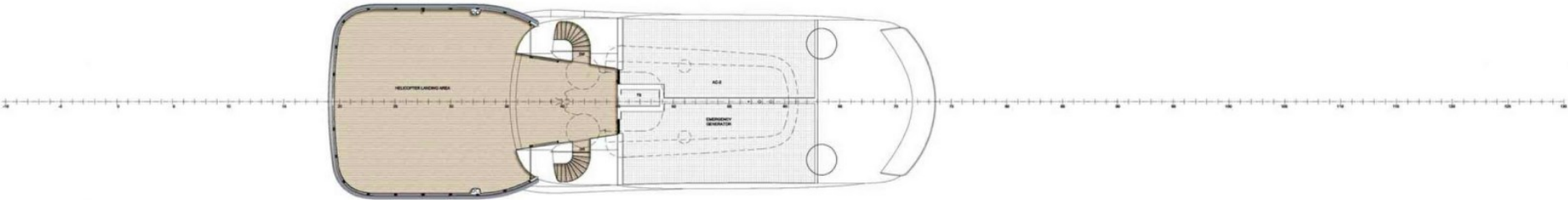
Speaker systems



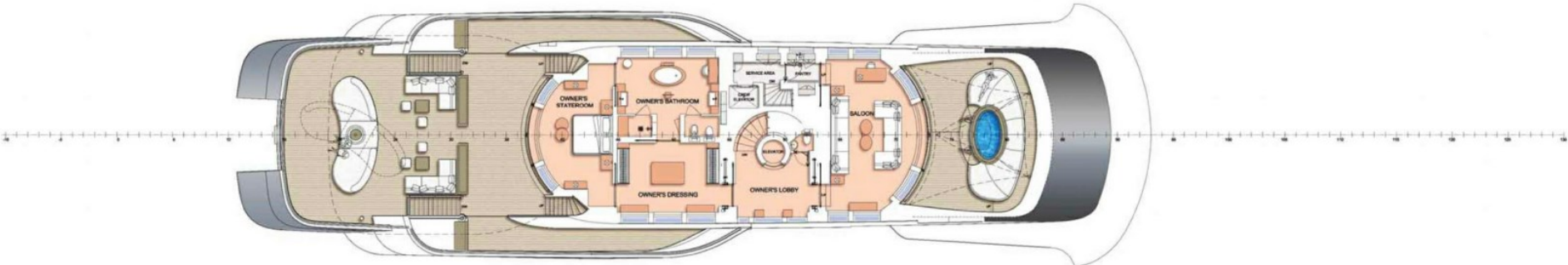
Streaming services



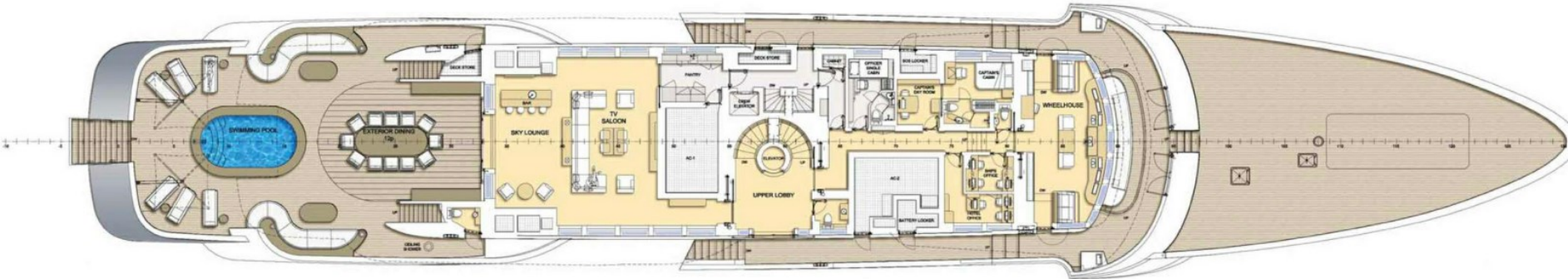
Video games



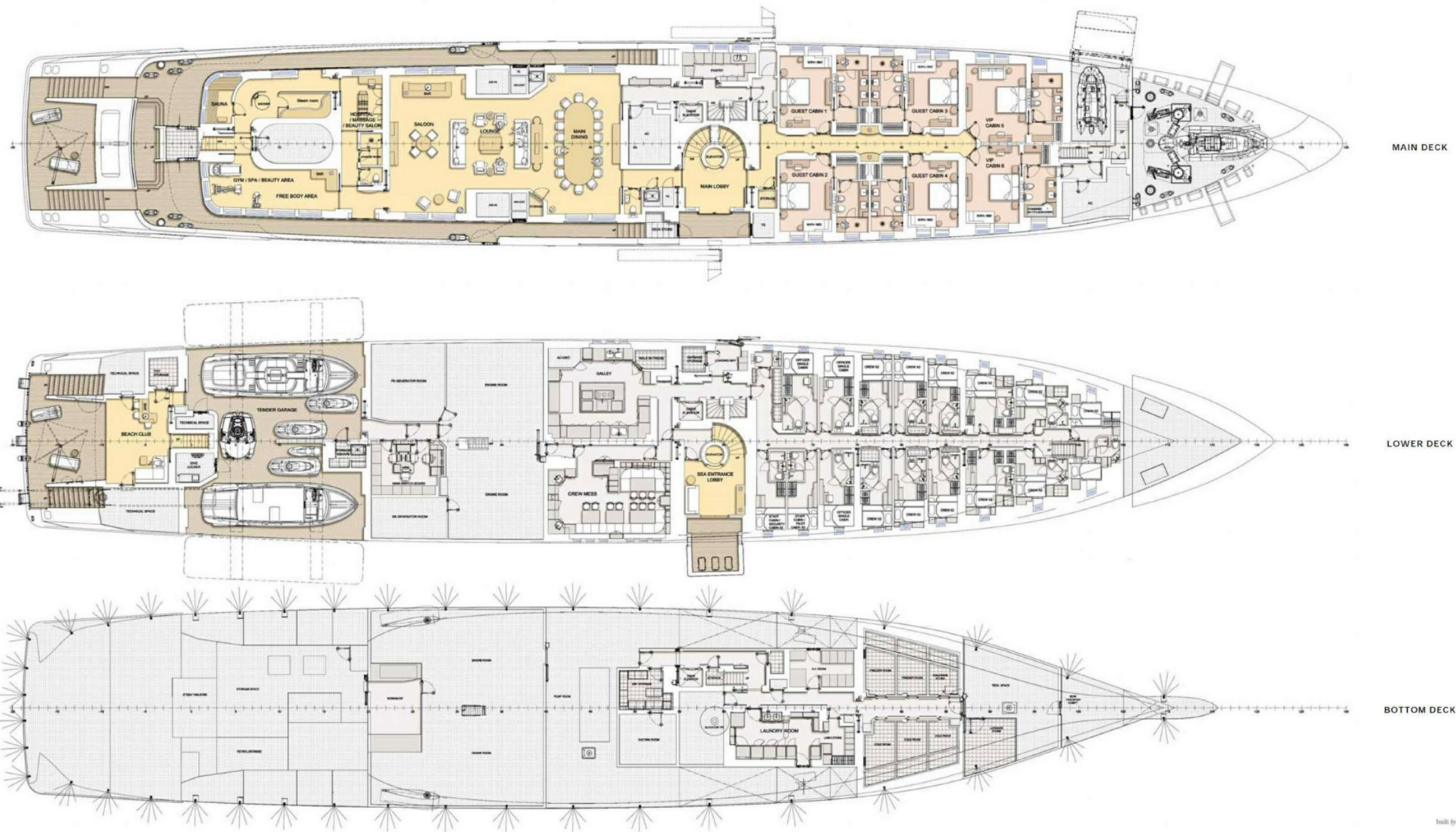
SUN DECK



OWNER'S DECK



UPPER DECK



built by OCEANCO

BURGESS

WORLD CLASS. WORLD WIDE.

London +44 20 7766 4300	Monaco +377 97 97 81 21	New York +1 212 223 0410	Miami +1 305 672 0150	Singapore +65 9665 8990	Beverly Hills +1 310 424 5112	Palma +34 971 495 413	Athens +30 210 967 1661
Dubai +971 4 425 5874	Phuket +66 7623 9739	Hong Kong +852 6496 2094	Tokyo +81 46 738 8612	Sydney +61 499 945 557	Mumbai +91 98211 67253	Shanghai +86 159 0162 1898	Rio de Janeiro +55 21 2553-3238
Aspen +1 970 710 2294							

La publicité de ce(s) navire(s) dans des publications imprimées, sur Internet ou sur tout autre support n'est pas autorisée sans l'autorisation écrite préalable de Burgess.
Toutes les informations sont données de bonne foi et sont considérées comme exactes, mais elles ne peuvent être garanties.

Dernière mise à jour : 04 juin 2025