

# LOTUS

---



LOTUS

# OVERVIEW.

## Key features

---

**Recently refitted**

---

**Fully equipped gym**

---

**Shaded deck dining and deck areas**

---

**Jacuzzi on the sun deck**

---

**Zero speed stabilisers to reduce any rolling motion while at anchor**

---

LOTUS

At anchor



At anchor



Sun deck



Bridge deck aft



BURGESS

Discover the difference.  
burgessyachts.com

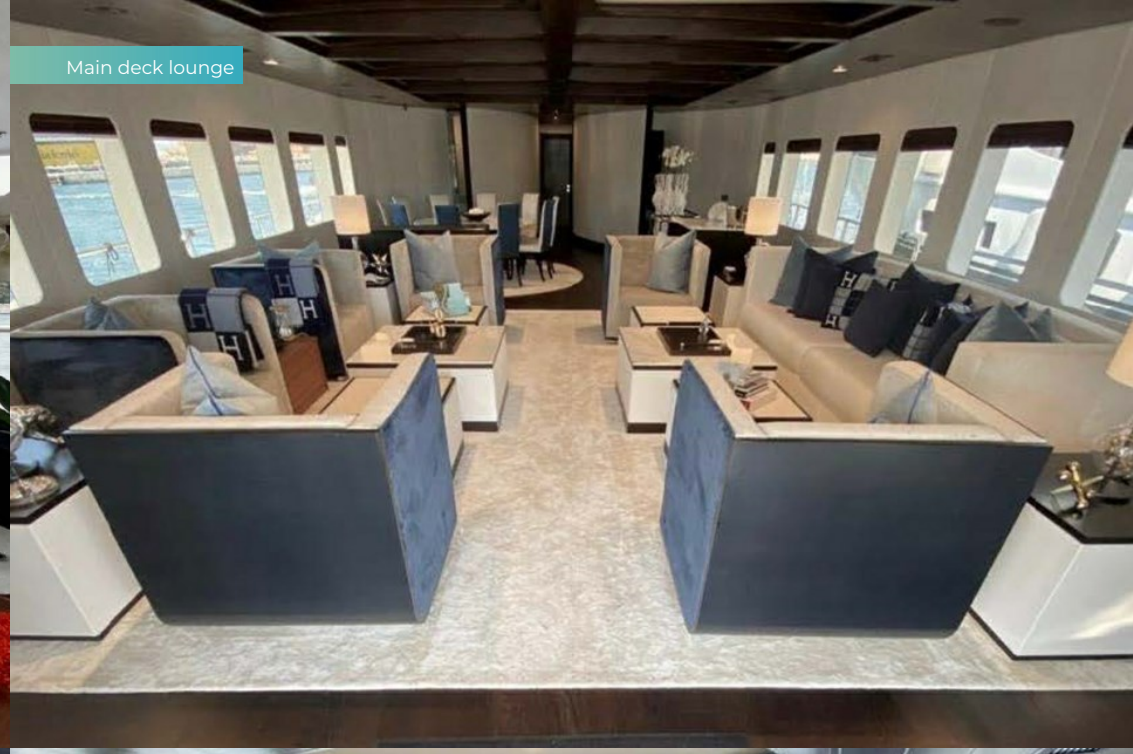


LOTUS

Bridge deck aft



Main deck lounge



Main deck lounge



Main deck dining area



BURGESS

Discover the difference.  
burgessyachts.com



LOTUS

Sky lounge



Master cabin



Master en suite bathroom



Double cabin



LOTUS

# SPECIFICATION.



Length  
**45m (147.6ft)**



Built  
**2006 (refitted 2022), Orucoglu Yacht, Turkey**



Interior designer  
**Mark Zeff Designs**



Beam  
**8.5m (27.9ft)**



Draft  
**3m (9.8ft)**



Gross tonnage  
**417**



Cruising speed  
**10 knots**



Maximum speed  
**12 knots**



Fuel consumption at cruising speed  
**217 litres per hour**



Engines  
**2 x 800hp MAN**



Guests  
**12**



No. of guest cabins  
**5 (4 x double, 1 x twin, 2 x additional berths)**



Crew  
**10**

[View yacht on website](#)



LOTUS

# TENDERS & TOYS



2 × Tenders



1 × Deck jacuzzi



Waterslide



Trampoline



Inflatable platform



2 × Waverunners



1 × eFoil



2 × Kayaks



2 × Stand up paddleboards



Wakeboard



Waterskis



Inflatable toys



Scuba diving equipment



Fishing gear



Snorkelling gear

LOTUS

# FITNESS & WELLNESS



Cross trainer



Free weights



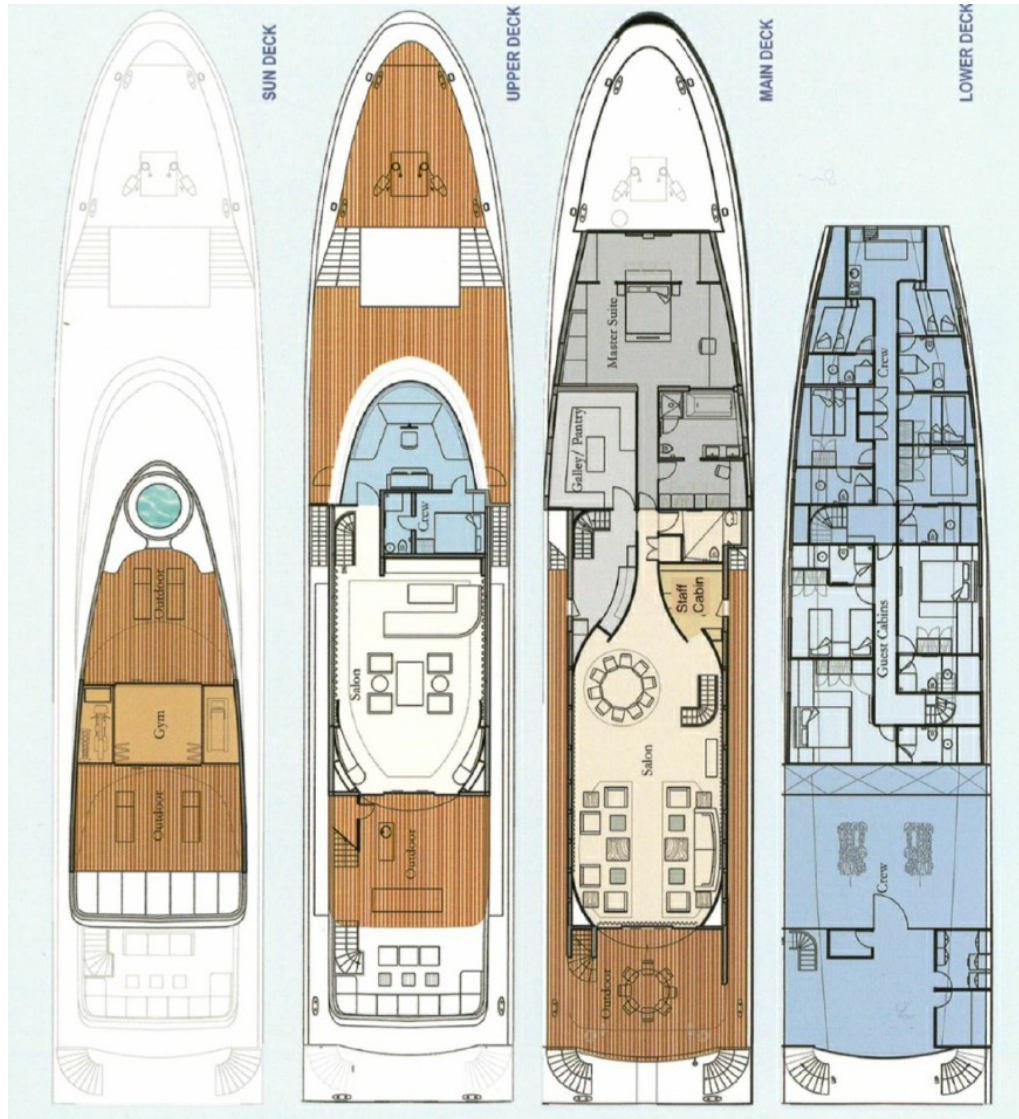
Treadmill



Yoga mats







BURGESS

WORLD CLASS.  
WORLD WIDE.

<b>London</b> +44 20 7766 4300	<b>Monaco</b> +377 97 97 81 21	<b>New York</b> +1 212 223 0410	<b>Miami</b> +1 305 672 0150	<b>Singapore</b> +65 9665 8990	<b>Beverly Hills</b> +1 310 424 5112	<b>Palma</b> +34 971 495 413	<b>Athens</b> +30 210 967 1661
<b>Dubai</b> +971 4 425 5874	<b>Phuket</b> +66 7623 9739	<b>Hong Kong</b> +852 6496 2094	<b>Tokyo</b> +81 46 738 8612	<b>Sydney</b> +61 499 945 557	<b>Mumbai</b> +91 98211 67253	<b>Shanghai</b> +86 187 0898 6800	<b>Rio de Janeiro</b> +55 21 2553-3238

---

Advertising of these vessel(s) in printed publications, on the internet or in any other medium is not permitted without prior written permission from Burgess. All particulars are given in good faith and are believed correct but they cannot be guaranteed.

Last updated: 10 December 2024