

LOON



LOON

OVERVIEW.

The 67.5-metre (222ft) LOON lives up to her name with four full decks of accommodation and a huge variety of shaded and open-air outdoor spaces, an extra-large beach club, a five-metre infinity pool, a six-person sauna, a full size gym, a large office and more. It all adds up to a huge chunk of prime superyacht real estate that's configured to host a charter party of no more than 12, with maximum space, privacy and luxury assured for everyone on board. She's a full custom yacht with a unique look, aesthetic and character that puts her in a class of her own.

Superlative views are assured from the intimate observation deck atop her tall superstructure – a great place for quiet relaxation when you just want to get away from it all. One level down, there's an elevated aft deck with a jacuzzi tub, and below that a shaded outdoor dining table plus a spacious, chic and comfortable open-air lounge. One more flight of steps takes you down to the vast open space of the main aft deck with its elegant contemporary dining area and extra large glass-fronted pool. And then yet more steps take you down to sea level where the stern opens up and the beach club awaits.

The views from inside are remarkable too, with great swathes of glass in the superstructure and big through-hull windows down below. In the huge full-beam master suite there's even a panoramic view from the bath. Dining on board can be elegantly formal or comfortably casual – just select the space that best suits your mood. The clean, modern décor by Studio Linse in gentle tones of cream and blond hardwood create a relaxing ambience in the main communal spaces, with a sharp contrast delivered by black high-gloss stairways and corridors. The main saloon has a high-spec entertainment system and the skylounge is a comfortable, convivial space that's flooded with natural light.

The enormous master suite is of course the pick of the guest cabins on board, but the upper deck VIP suite comes a very close second with its huge picture windows and spacious marble bathroom. Even the smaller cabins on the lower deck are huge, relative to what you'd expect to find in a more typical yacht, with king size island beds or generously sized twins.

There's yet another large lounge in the beach club with its own bar. The sauna and gym are also here, plus a full range of watersports toys. Jet skis, Seabobs, paddleboards, canoes, water skis and towable toys – you name it, she's got it.

Key features

Regularly maintained

Spa facilities: sauna, massage room

Beach club at sea level

Flexible cabin configurations

Exercise equipment

7.2m Super Air Nautique Ski boat

14.6m Anvera chase tender

Cinema room

Massage room

Shaded deck dining and deck areas

Pool on the main deck aft

Jacuzzi on the bridge deck aft

Zero speed stabilisers to reduce any rolling motion while at anchor

LOON

Stern view



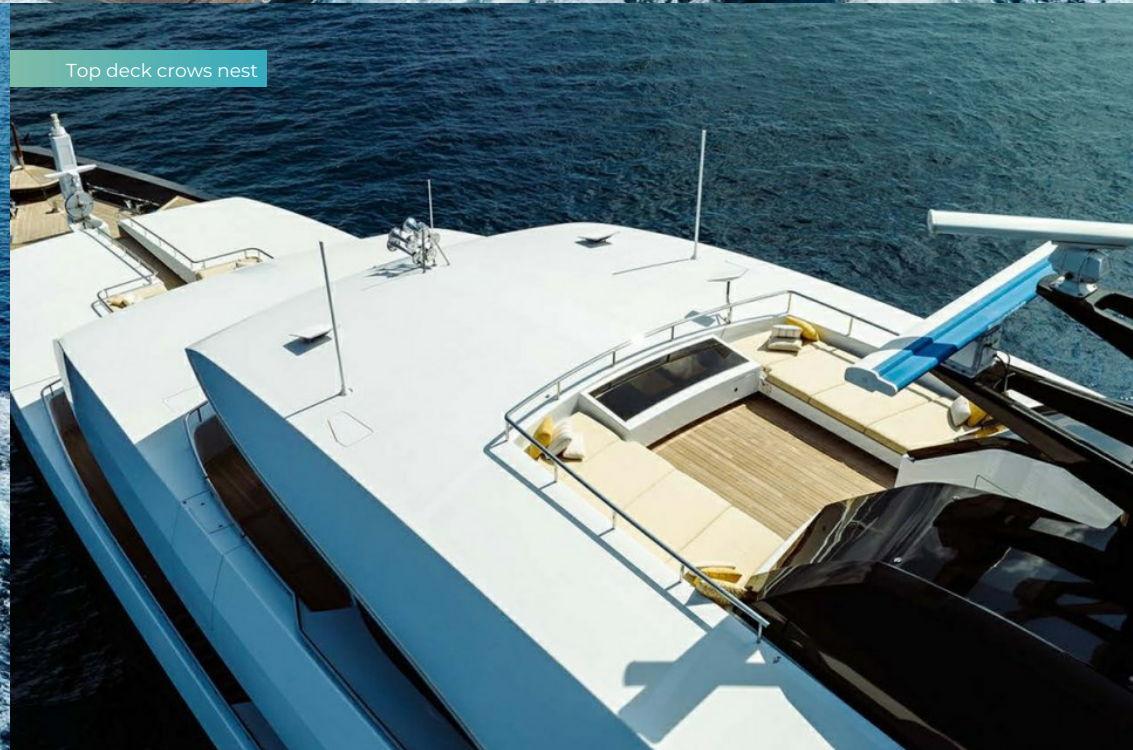
Cruising



Aerial view



Top deck crows nest



LOON

Aft decks



Bridge deck aft



Foredeck seating



Upper deck aft



LOON

Upper deck aft dining



Upper deck aft dining



Main deck aft

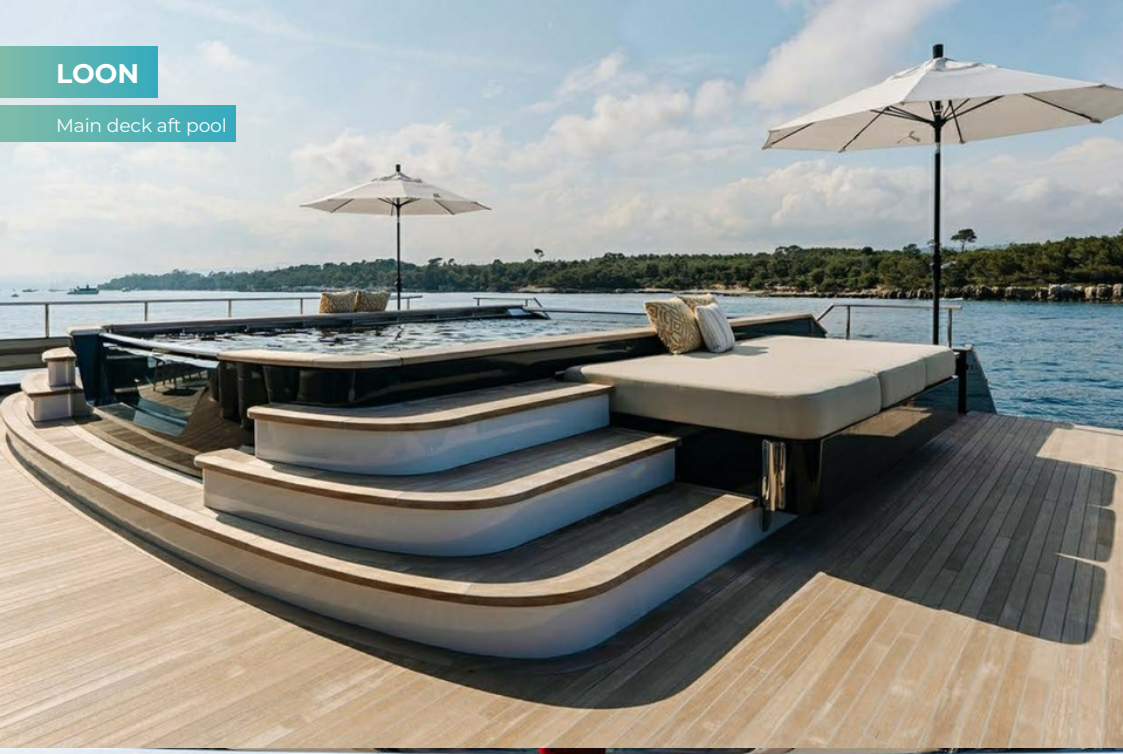


Main deck aft



LOON

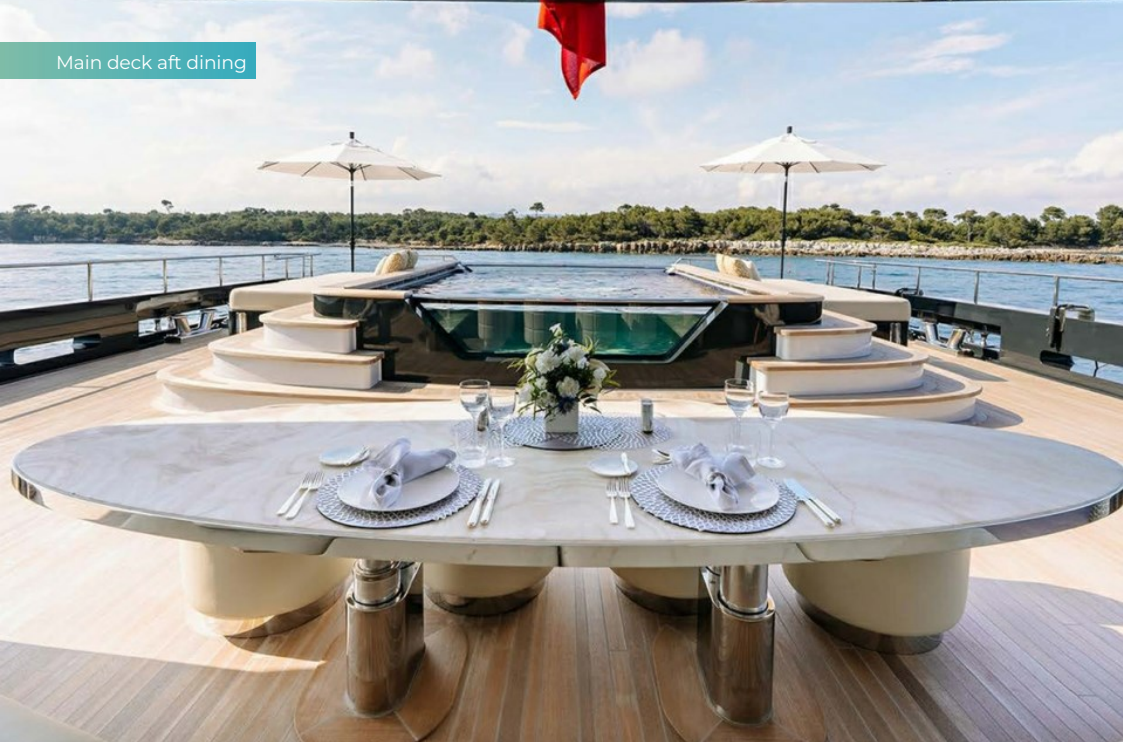
Main deck aft pool



Main deck aft



Main deck aft dining



Main deck aft dining



BURGESS

Discover the difference.
burgessyachts.com



LOON

Main deck aft



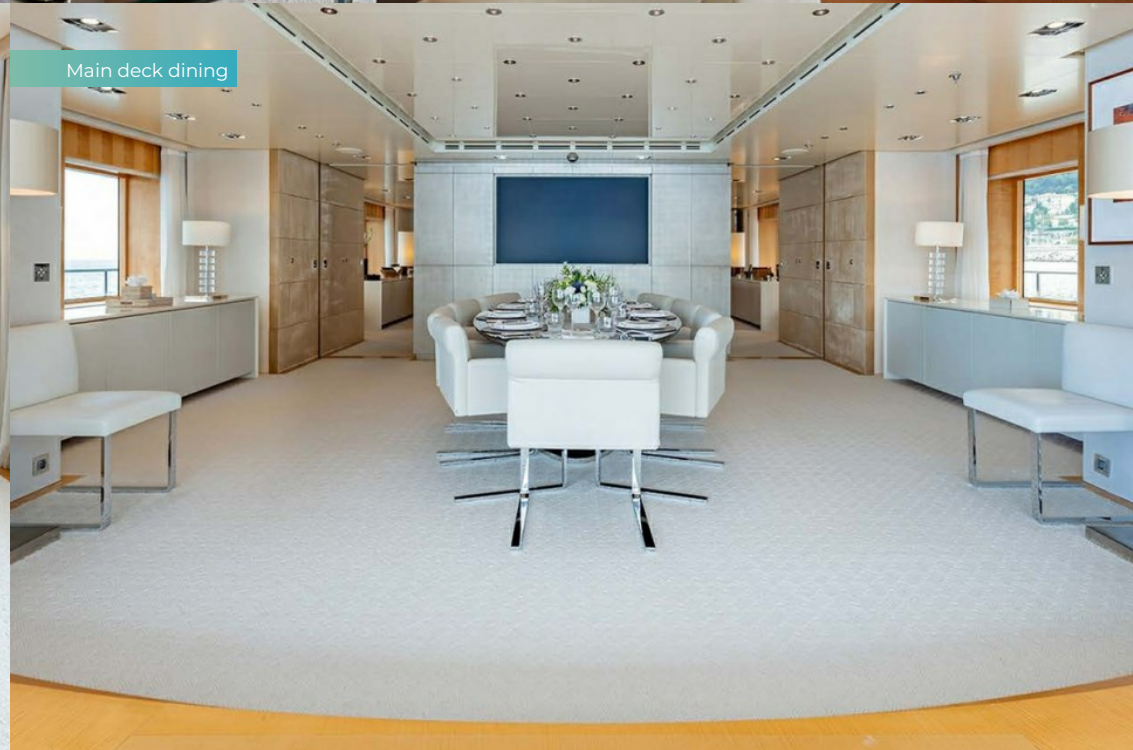
Main deck dining



Main deck dining



Main deck dining



LOON

Main deck lounge



Main deck lounge



Upper deck lounge



Upper deck lounge



LOON

Bridge



Main deck master cabin



Main deck master cabin



Master bathroom en suite



LOON

Master bathroom en suite



Upper deck master office



Upper deck master office



Upper deck double cabin



LOON

Upper deck double cabin



Beach club



Gym



Sauna



LOON

Massage room



Swim platform / Beach club



Swim platform



Swim platform



LOON

Golf



Seabobs



eFoil



Tender



BURGESS

Discover the difference.
burgessyachts.com



LOON

Tender



Crew



Cruising



BURGESS

Discover the difference.
burgessyachts.com



LOON

SPECIFICATION.



Length
67.5m (221.4ft)



Built
2010 (refitted 2020), Icon Yachts, The Netherlands



Interior designer
Paul Linse/Christiano Gatto



Beam
11.4m (37.4ft)



Draft
3.7m (12.1ft)



Gross tonnage
1,295



Cruising speed
13 knots



Maximum speed
15 knots



Fuel consumption at cruising speed
540 litres per hour



Engines
2 x 2,480hp MTU



Guests
12



No. of guest cabins
7 (2 x double, 4 x double/twin, 1 x single)



Crew
18

[View yacht on website](#)

[Watch yacht video](#)



LOON

TENDERS & TOYS



1 x Towed tender



3 x Tenders



1 x Deck jacuzzi



Pool



2 x Waverunners



1 x Stand up jetski



2 x SeaBobs



1 x eFoil



2 x Kayaks



2 x Stand up paddleboards



Wakeboard



Waterskis



Anti-jellyfish pool



Inflatable platform



Waterslide



Inflatable tows



Dive centre



Scuba diving equipment



Snorkelling gear



Fishing gear



RYA training centre for jetskis & waverunners

LOON

FITNESS & WELLNESS



Boxing equipment



Exercise balls



Free weights



Jump ropes



Kinesis machine



Multi gym



Resistance bands



Rowing machine



Training bench



Treadmill



Upright stationary bike



Yoga mats



Hammam/Steam room



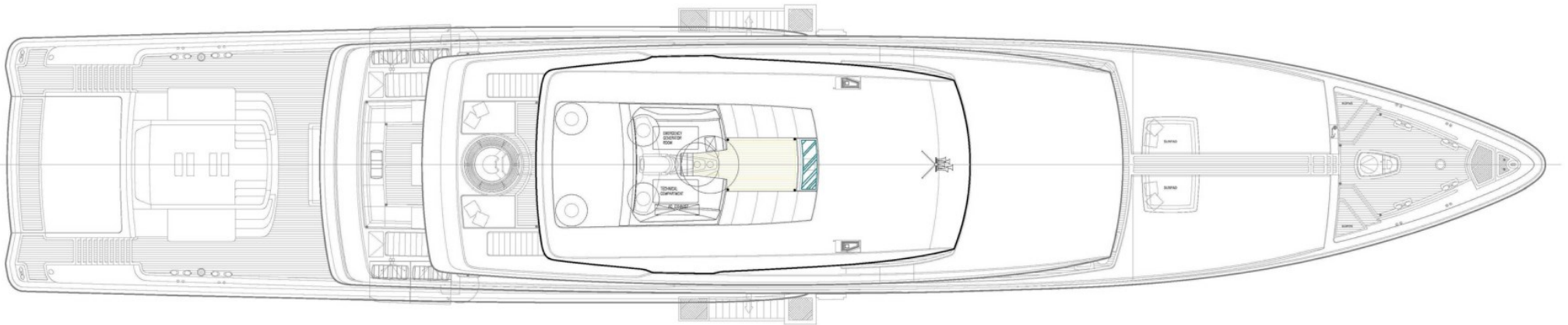
Massage room

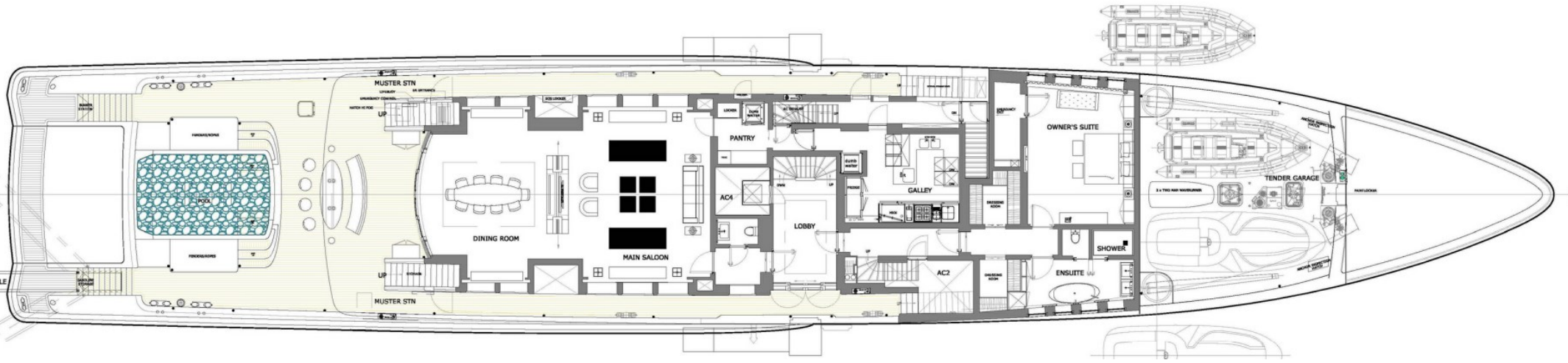
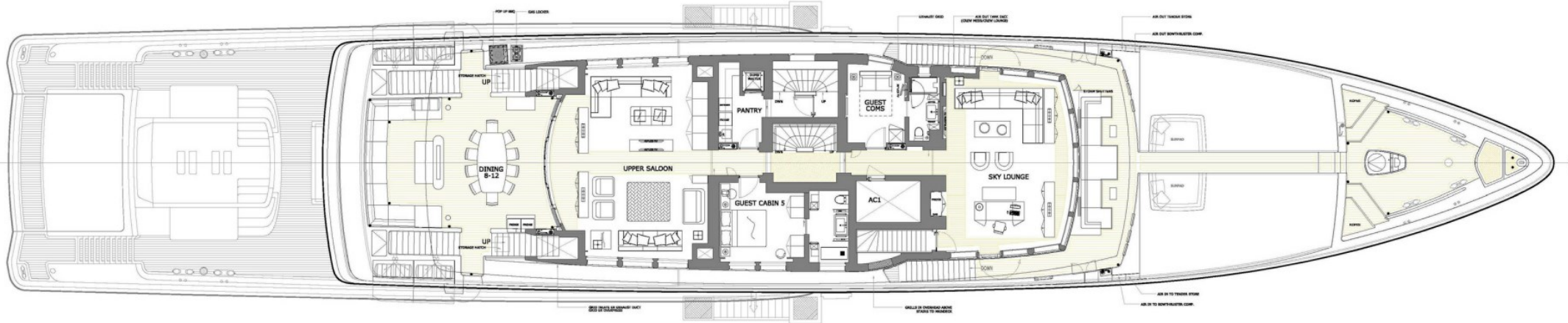
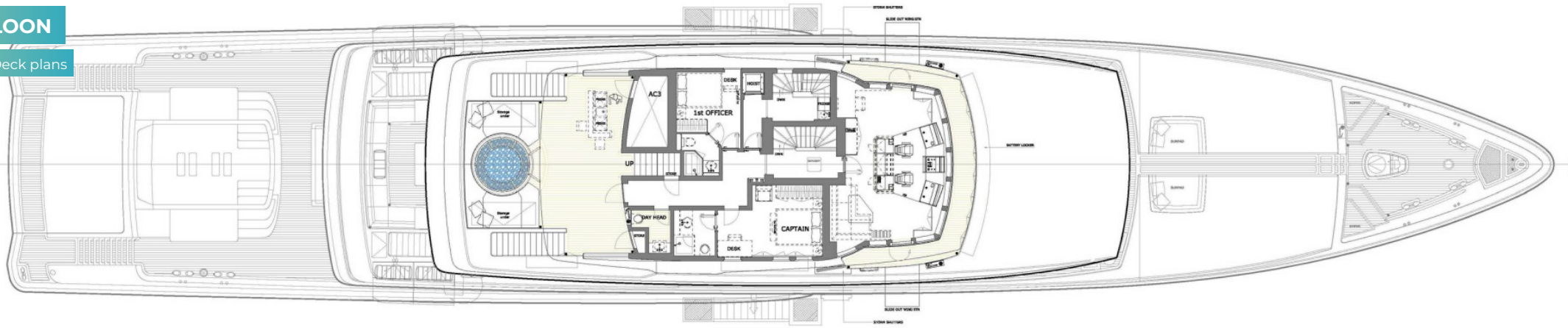


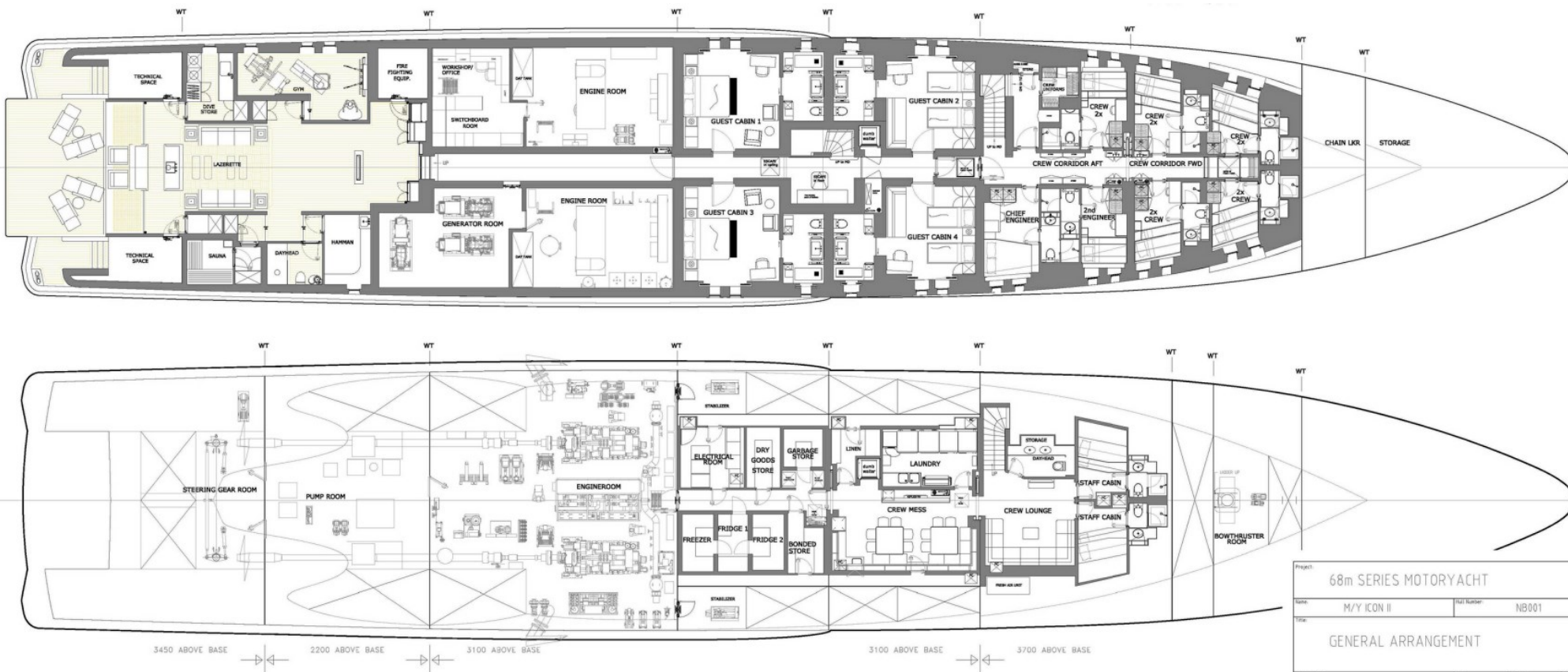
On board masseuse



Sauna







PRINCIPAL DIMENSIONS

Beam	10.00	meter
Length Overall	67.60	meter
Length Between Perches	57.75	meter
Full Length	55.40	meter
Beam Maximum	11.20	meter
Beam Moulded	11.00	meter
Depth Moulded	1.800	meter
Height	3.700	meter
Flare Scantling	0.800	meter
Maximum Speed	17.00	knots
Cruise Speed	16.00	knots
Displacement @ 000	10.00	degrees

REGULATORY BODY

Classification: ICGT
 Flag: Netherlands, MCA L12

Project: 68m SERIES MOTORYACHT		ICON YACHTS
Name: M/Y ICON II	NAI Number: NB001	
Title: GENERAL ARRANGEMENT		Date: 11-07-2016
		Scale: 1/100
		Format: A0
Document No.: 01120-9999-000-001	Drawn: 01120	Spec ID: 9999
		Drawing No.: 000-001
		Sheet: 1 of 1

This drawing and the information contained herein are the property of Icon Yachts and may not be reproduced or used in any way without the prior written consent of Icon Yachts. All rights reserved. © 2016 Icon Yachts. All dimensions in feet, inches and millimeters. Icon Yachts - Large Yachts - 68m Series - The Netherlands - info@iconyachts.nl - www.iconyachts.nl



BURGESS

WORLD CLASS. WORLD WIDE.

London +44 20 7766 4300	Monaco +377 97 97 81 21	New York +1 212 223 0410	Miami +1 305 672 0150	Singapore +65 9665 8990	Beverly Hills +1 310 424 5112	Palma +34 971 495 413	Athens +30 210 967 1661
Dubai +971 4 425 5874	Phuket +66 7623 9739	Hong Kong +852 6496 2094	Tokyo +81 46 738 8612	Sydney +61 499 945 557	Mumbai +91 98211 67253	Shanghai +86 187 0898 6800	Rio de Janeiro +55 21 2553-3238
Aspen +1 970 710 2294							

Advertising of these vessel(s) in printed publications, on the internet or in any other medium is not permitted without prior written permission from Burgess. All particulars are given in good faith and are believed correct but they cannot be guaranteed.

Last updated: 13 February 2025