

# LEGEND





LEGEND

# OVERVIEW.

Do you want to explore life at the very edges of existence? Do you want to venture beyond civilisation and immerse yourself in a genuine wilderness? Do you want to dive beneath Antarctic icebergs in a submersible, heliski pristine slopes in Greenland, track bears on snow scooters in Alaska?

Then LEGEND is the yacht for you because there is nowhere this ice breaking leviathan can't go and nothing you can't do when you get there. Originally a Russian ice breaker, she was converted into a luxurious superyacht but retained her go-anywhere, do-anything capability.

Equipment includes a submersible for one pilot and two passengers, EC 135 and Robinson Light helicopters and a fully certified helipad, no fewer than nine tenders including an enclosed chase tender and a host of watertoys to enjoy in the time when you're not experiencing what few ever will.

With a private master deck with suite, two VIP suites, five double cabins and five convertible cabins, she is ready to give up to 22 guests the natural experience of a lifetime at the ends of the earth. She also gives them every possible comfort and amenity with dining tables and bars inside and out and plenty of deck space for sun lounging or exercise.

When you're back on board, downtime never felt so good. You can slip into the 16-person pool with waterfall feature on the main deck aft or get some me-time in the Balinese spa with sauna, jacuzzi and beauty salon. You can work out in the gym or catch a movie in the 14-person cinema. You can enjoy fresh produce cooked on the BBQ by one of two chefs and enjoy cocktails at indoor and outdoor bars.

The yacht can also accommodate up to 10 expedition staff to run on shore and underwater trips and you could invite a scientist along and help to conduct game-changing research while learning about this precious environment.

This is a yacht for guests who want to learn about natural wonders and find out more about themselves. LEGEND is a yacht for those who want to write their own.

## Key features

---

**Spa facilities: sauna, massage room, beauty room**

---

**Private master deck**

---

**Fully equipped gym**

---

**Helipad and 2 x helicopters (optional)**

---

**Submarine (optional)**

---

**Can accommodate up to 22 guests**

---

**Three VIP cabins**

---

**Flexible accommodation with additional cabins for expedition crew**

---

**16-person jacuzzi on the main deck & 8-person jacuzzi in the spa**

---

**Zero speed stabilisers to reduce any rolling motion while at anchor**

---



LEGEND



Aerial view



Main deck aft



Main deck aft jacuzzi



LEGEND

Main deck dining area



Upper deck aft



Upper deck aft



Main deck salon





LEGEND

Main deck dining area



Upper deck salon



Master cabin



Master cabin





LEGEND

VIP cabin



VIP cabin



VIP cabin



VIP cabin





LEGEND

Guest cabin



Guest cabin



Twin cabin



Cinema



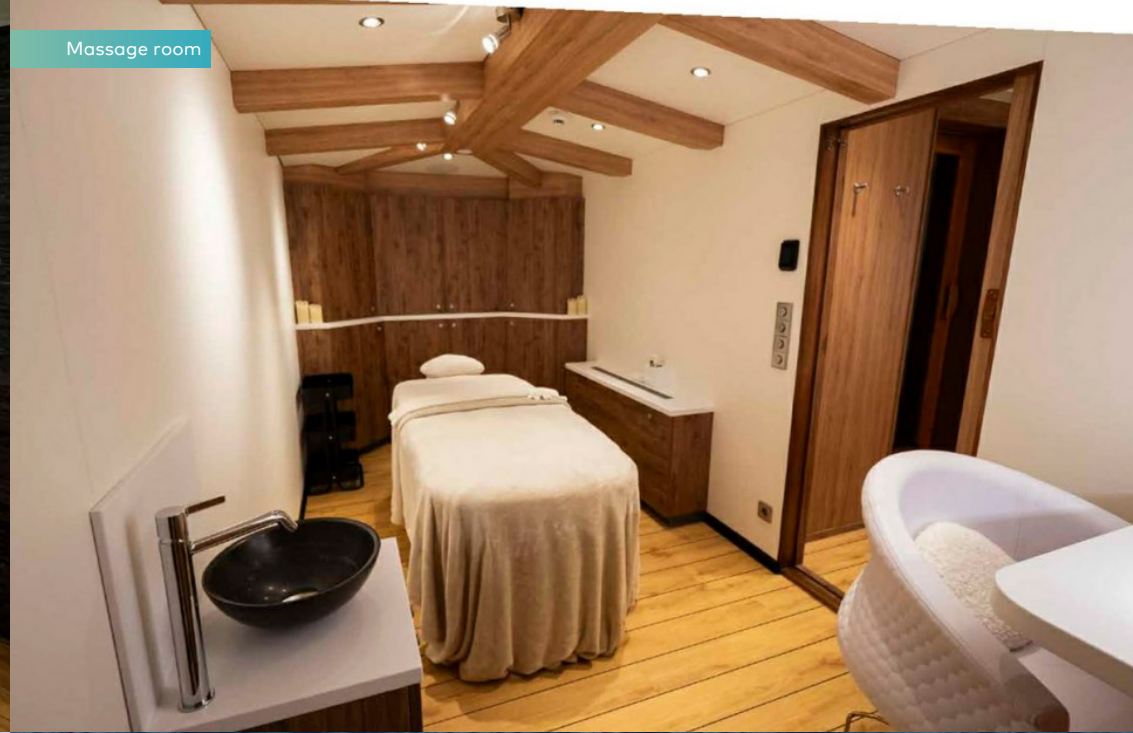


LEGEND

Spa



Massage room



Watersports



Chase tender





LEGEND

Submarine



Cruising





## LEGEND

# SPECIFICATION.



Length  
77.4m (253.9ft)



Built  
1974 (rebuilt 2016, refitted 2019), IHC Verschure,  
The Netherlands



Interior designer  
IHC Holland



Beam  
13.5m (44.3ft)



Draft  
6.5m (21.3ft)



Gross tonnage  
2,407



Cruising speed  
11 knots



Maximum speed  
12 knots



Fuel consumption at cruising speed  
540 litres per hour



Engines  
2 x 3,400hp Smit Bolnes



Guests  
22



No. of guest cabins  
11 (8 x double, 2 x double/twin, 1 x twin)



Crew  
28

[View yacht on website](#)

[Watch yacht video](#)





# EQUIPMENT.

## Tenders & toys

---



1 x Towed tender



6 x Tenders



1 x Submersible



1 x Deck jacuzzi



3 x Waverunners



2 x SeaBobs



1 x Jetsurf



2 x eFoils



8 x Kayaks



6 x Stand up paddleboards



Wakeboard



Kneeboard



Waterskis



Inflatable toys



Scuba diving equipment



Fishing gear



Snorkelling gear



# Fitness & wellness



Cardio wave side stepper



Cross trainer



Free weights



Treadmill



Beauty salon



Massage room



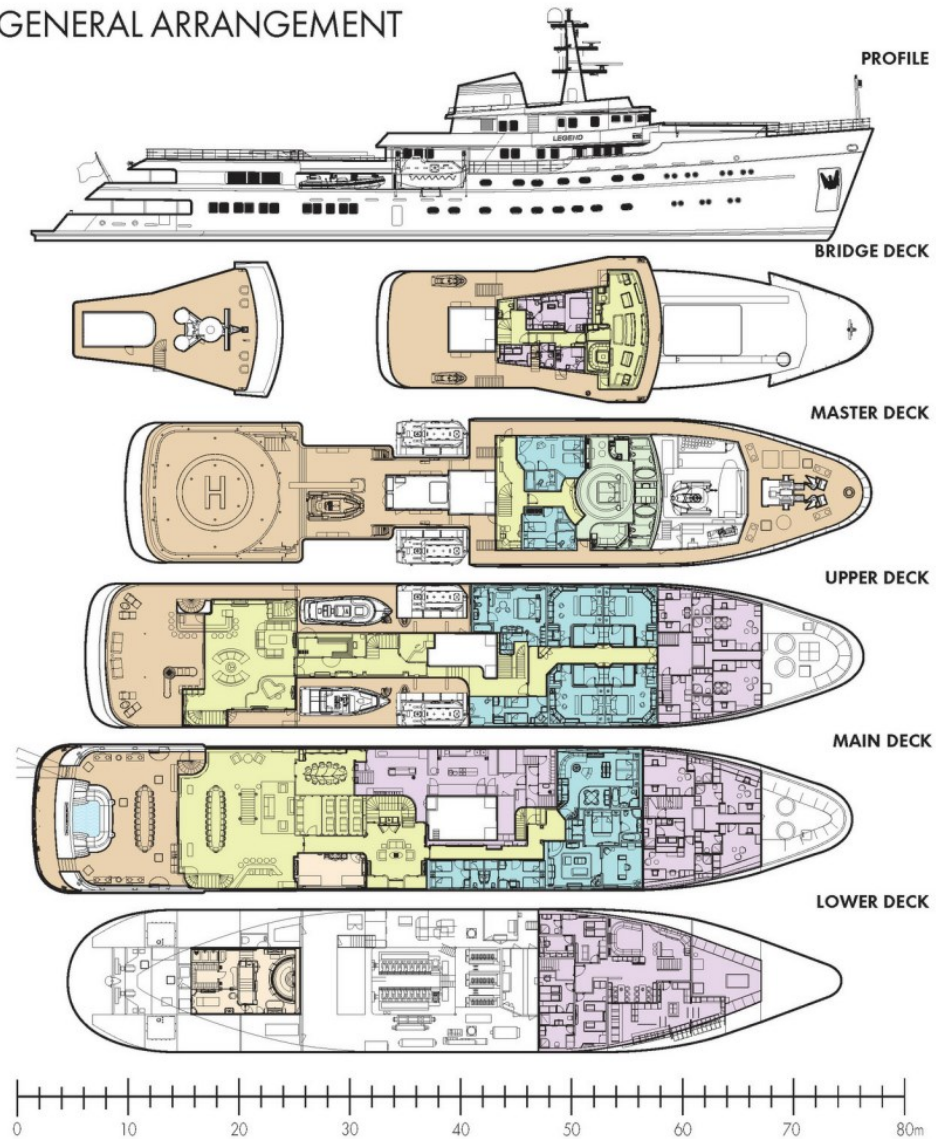
Sauna





# LEGEND

## GENERAL ARRANGEMENT



### KEY

- DECK
- MASTER CABIN
- GUEST AREAS
- GUEST CABINS
- CREW AREAS
- FITNESS & WELLBEING



BURGESS

WORLD CLASS.  
WORLD WIDE.

London +44 20 7766 4300	Monaco +377 97 97 81 21	New York +1 212 223 0410	Miami +1 305 672 0150	Singapore +65 9665 8990	Beverly Hills +1 310 424 5112	Palma +34 971 495 413	Athens +30 210 967 1661
Dubai +971 4 425 5874	Phuket +66 7623 9739	Hong Kong +852 6496 2094	Tokyo +81 46 738 8612	Sydney +61 499 945 557	Mumbai +91 98211 67253	Shanghai +86 187 0898 6800	

Advertising of these vessel(s) in printed publications, on the internet or in any other medium is not permitted without prior written permission from Burgess. All particulars are given in good faith and are believed correct but they cannot be guaranteed.

Last updated: 01 May 2024