

# LA FAMILIA

---





LA FAMILIA

# SPECIFICATION.



Asking price  
**EUR 35,500,000**



Built  
**2015, Amels, The Netherlands**



Length  
**55m (180.5ft)**



Beam  
**9.4m (30.8ft)**



Draft  
**3.4m (11.1ft)**



Gross tonnage  
**671**



Cruising speed  
**13 knots**



Maximum speed  
**15.5 knots**



Range  
**4,500 nm**



Flag  
**Cook Islands**



Lying  
**East Mediterranean**



Class  
**Lloyd's Register, 100 A1 SSC Yacht Mono G6,  
LMC UMS, LY(2) by CISR**



Exterior designer  
**Tim Heywood**



Interior designer  
**Lambert & Thurnherr Interiors**



Construction  
**Hull - Steel, Superstructure - Aluminium, Deck - Teak**



Crew  
**14**



Guests  
**11**



Cabins  
**5 (4 × double, 1 × twin, 1 × additional berths)**



Engines  
**2 × 1,400hp MTU**



Propulsion  
**Twin screw diesel yacht**

[View yacht on website](#)

[Watch yacht video](#)





## LA FAMILIA

Main deck lounge



Main deck lounge



Main deck dining area



Owner's cabin



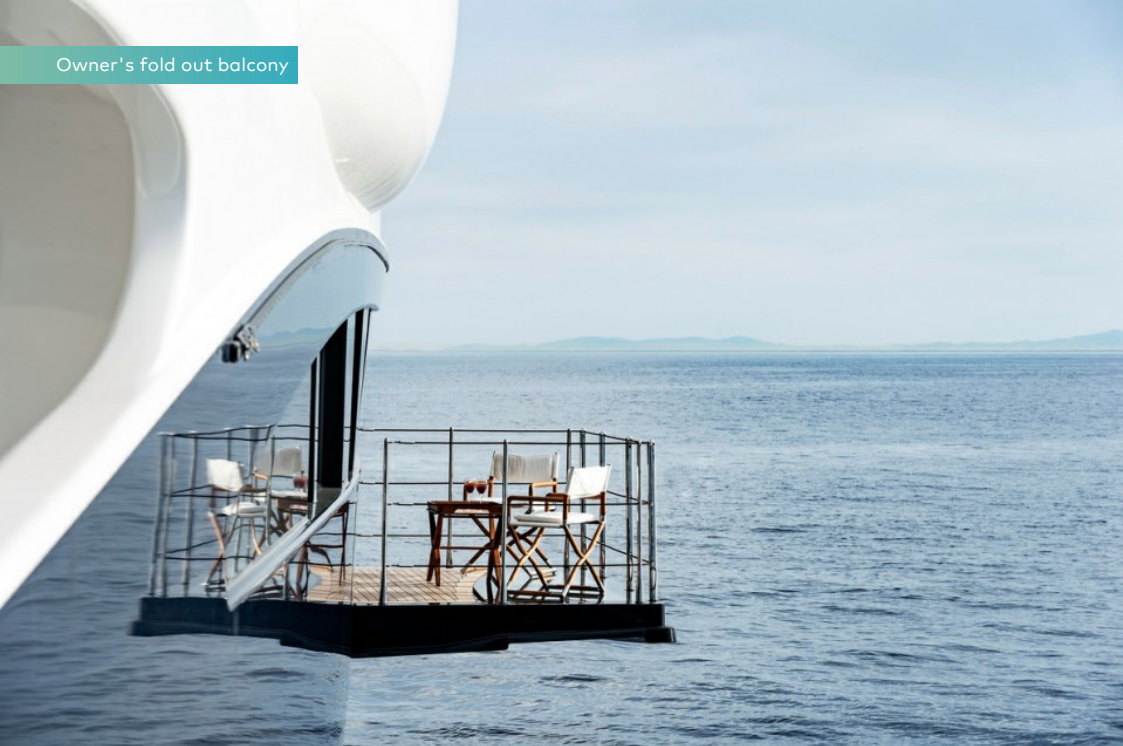


## LA FAMILIA

Owner's cabin



Owner's fold out balcony



Owner's en suite



Owner's dressing room





## LA FAMILIA

Owner's study



Double cabin



Double cabin en suite



Double cabin



BURGESS

Discover the difference.  
[burgessyachts.com](http://burgessyachts.com)





## LA FAMILIA

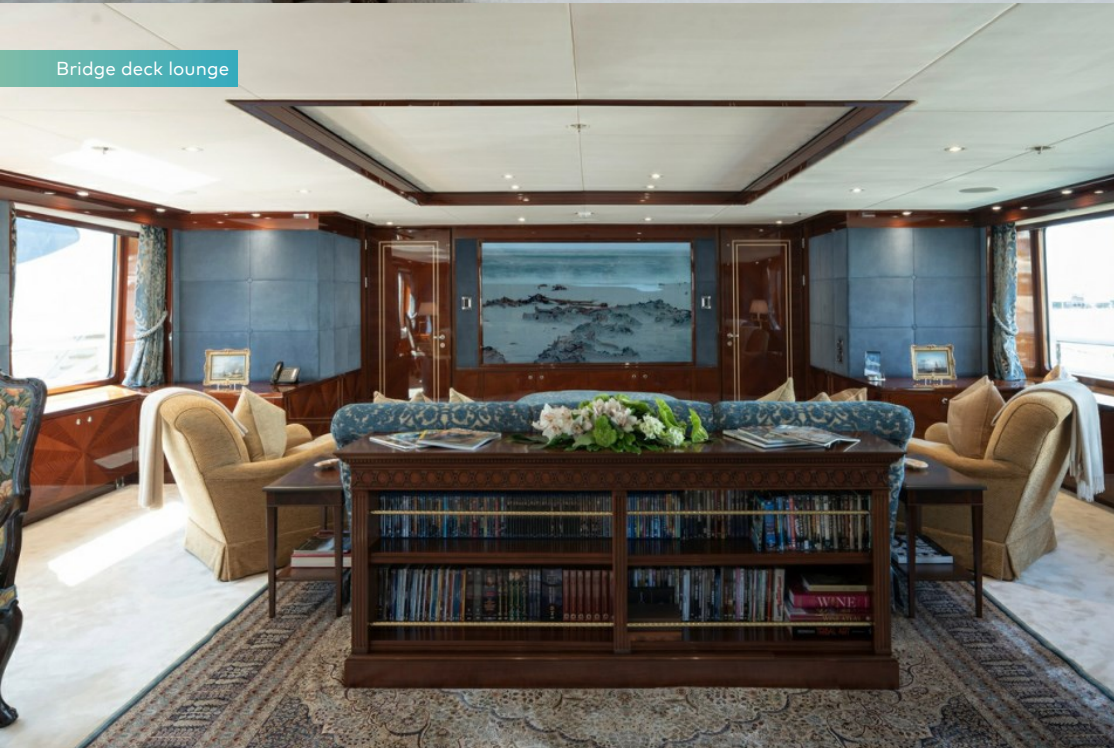
Twin cabin with pullman



## Sauna room



## Bridge deck lounge



## Bridge deck lounge





## LA FAMILIA

Bridge



Sun deck/helipad



Sun deck jacuzzi



Sun deck gym



BURGESS

Discover the difference.  
burgessyachts.com





## LA FAMILIA

Sun deck aft



Bridge deck dining area



Bridge deck seating area



Beach club



BURGESS

Discover the difference.  
[burgessyachts.com](http://burgessyachts.com)





## LA FAMILIA

Beach club



Beach club



Cruising



BURGESS

Discover the difference.  
[burgessyachts.com](http://burgessyachts.com)





# OVERVIEW.

The 55m (180.5ft) motor yacht LA FAMILIA was delivered by Dutch yard Amels in 2015 with exterior Tim Heywood Design and a bespoke interior by acclaimed London studio Lambert & Thurnherr.

The deep blue hull of this four-deck yacht creates a distinguished appearance and immaculately finished cabinetry reflects a stylish modern take on traditional interior design. The owner's choice of Lambert & Thurnherr also sets the yacht apart from many of the other Amels yachts.

These aren't the only elements that make this yacht unique. There's also the raised lounge area on the strengthened sun deck that also serves as a touch-and-go helipad, and the large folding balcony in the full-beam master suite that creates an intimate al fresco space in the privacy of the main deck suite. On the lower deck, three double cabins and a twin cabin with pullman berth complete versatile accommodation for 11 guests, looked after by up to 14 crew.

A retractable 100in TV in the sky lounge links to a central Lantic server to make this the perfect location for movie nights with the huge picture windows blacked-out. All cabins and inside social areas have large TVs linked to the server and surround sound. The owner's specification was exhaustive - indeed the yacht voluntarily complies to ISM, ISPS and MLC standards despite only ever having been used privately.

LA FAMILIA has also been tirelessly maintained inside and out without compromise by the current owner. The 5 year survey was completed in 2020 along with main engine servicing, significant systems overhaul and a full repaint. Twin MTU 16V2000 M70 diesel engines, maintained to MTU recommendation produce a top speed of 15.5 knots and give the yacht a transatlantic range of 4,500nm at a cruising speed of 13 knots.

## Key features

---

**5 year class/flag survey and full repaint of yacht completed in 2020**

---

**Touch and go helipad, for an aircraft of up to 2,000kg**

---

**Bespoke Lambert and Thurnherr interior**

---

**Three folding balconies on the main deck. Two in the main saloon accessed through full height sliding doors and one further in the owner's stateroom**

---

**Commercially compliant, although only ever privately used**

---

**4,500nm range at 13 knots**

---

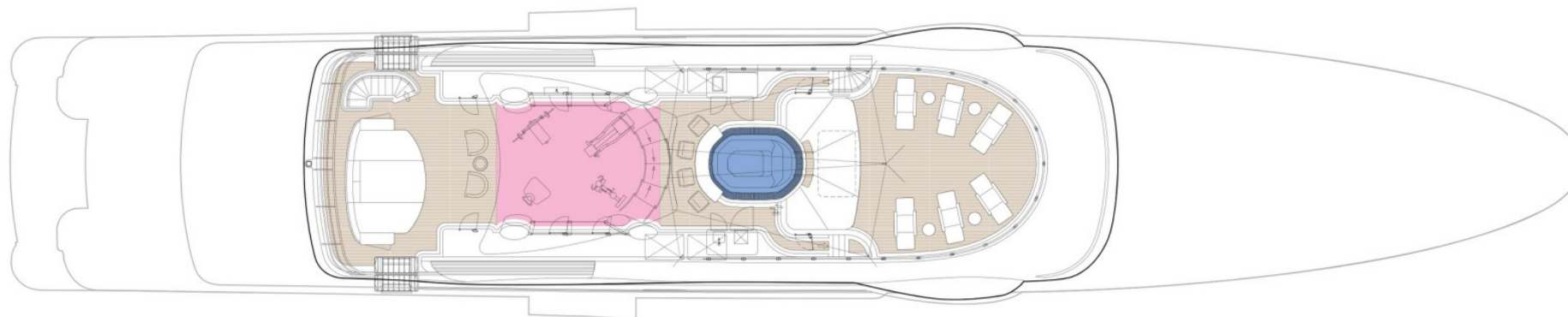
## Tenders

---

7.2m Pasoe DT with 250hp inboard engine & 6.2m Pascoe Solas Rescue tender with 180hp jet drive propulsion



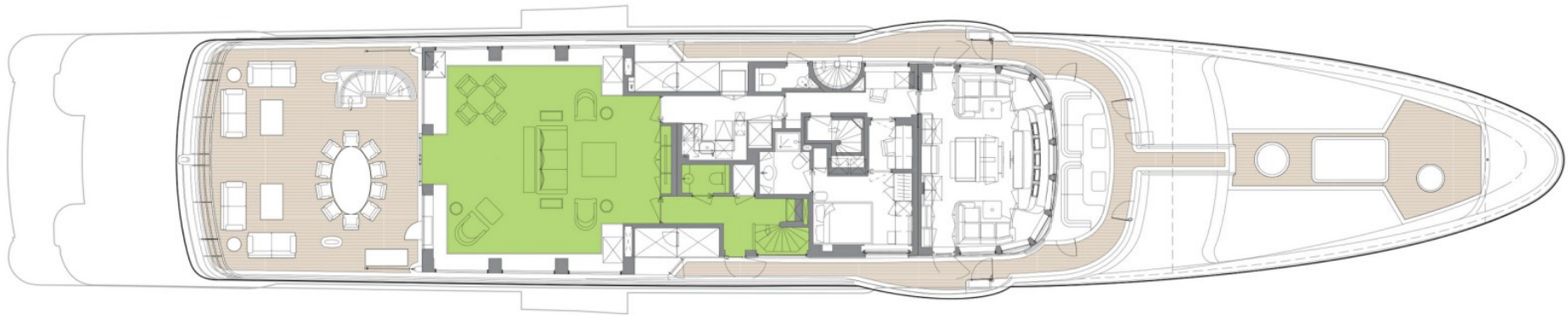
# SUN DECK



 GUEST AREAS  OWNER'S SUITE  GUEST CABINS  OWNER'S OFFICE  GYM  SAUNA  STEAM ROOM  JACUZZI



# BRIDGE DECK



 GUEST AREAS  OWNER'S SUITE  GUEST CABINS  OWNER'S OFFICE  GYM  SAUNA  STEAM ROOM  JACUZZI



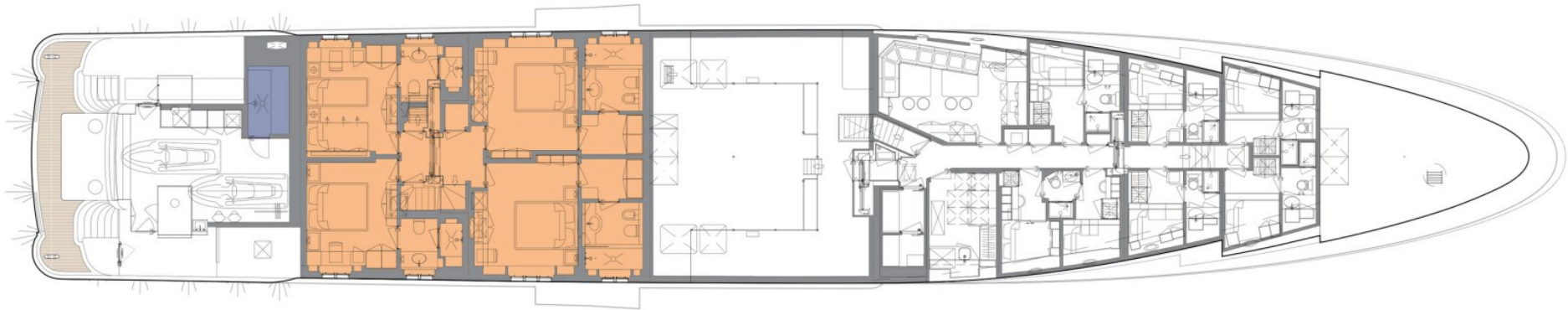
# MAIN DECK



■ GUEST AREAS   ■ OWNER'S SUITE   ■ GUEST CABINS   ■ OWNER'S OFFICE   ■ GYM   ■ SAUNA   ■ STEAM ROOM   ■ JACUZZI



# LOWER DECK



■ GUEST AREAS   ■ OWNER'S SUITE   ■ GUEST CABINS   ■ OWNER'S OFFICE   ■ GYM   ■ SAUNA   ■ STEAM ROOM   ■ JACUZZI



# BURGESS

# WORLD CLASS. WORLD WIDE.

London +44 20 7766 4300	Monaco +377 97 97 81 21	New York +1 212 223 0410	Miami +1 305 672 0150	Singapore +65 9665 8990	Beverly Hills +1 310 424 5112	Palma +34 971 495 413	Athens +30 210 967 1661
	Dubai +971 4 425 5874	Phuket +66 7623 9739	Hong Kong +852 6496 2094	Tokyo +81 46 738 8612	Sydney +61 499 945 557	Mumbai +91 98211 67253	

Advertising of these vessel(s) in printed publications, on the internet or in any other medium is not permitted without prior written permission from Burgess. All particulars are given in good faith and are believed correct but they cannot be guaranteed.

Last updated: 01 March 2024