

LADY S



LADY S APERÇU.

Delivered in 2019, LADY S is an incredibly impressive yacht with an abundance of space inside and out. Her Raymond Langton designed interior of bright white and glistening crystal chandeliers creates a highly contemporary ambience with unique rare materials throughout.

Accommodation for 12 guests across seven cabins includes master suite, two VIP cabins, two doubles and two twin cabins. All guests can enjoy fantastic views through large windows and relax on private fold-out balconies.

Her multiple special features include an IMAX Dolby cinema, nightclub, fully-certified helipad, a sophisticated beach club with hammam and plunge pool which sits beneath the glass-bottomed swimming pool.

Her crew of 33 will assure clients' every whim will be attended to.

Principales caractéristiques

Winner of the 2020 World Superyacht Awards in the Displacement Motor Yacht 2,000GT - 4,999GT category

Spa facilities: massage room, sauna, hammam, ice plunge pool, beauty room

Beach club at sea level

Balcony off two double cabins

Fully equipped gym

Helipad

11m limo tender

Flexible cabin configurations

Elevator

Jacuzzi and pool on the main deck

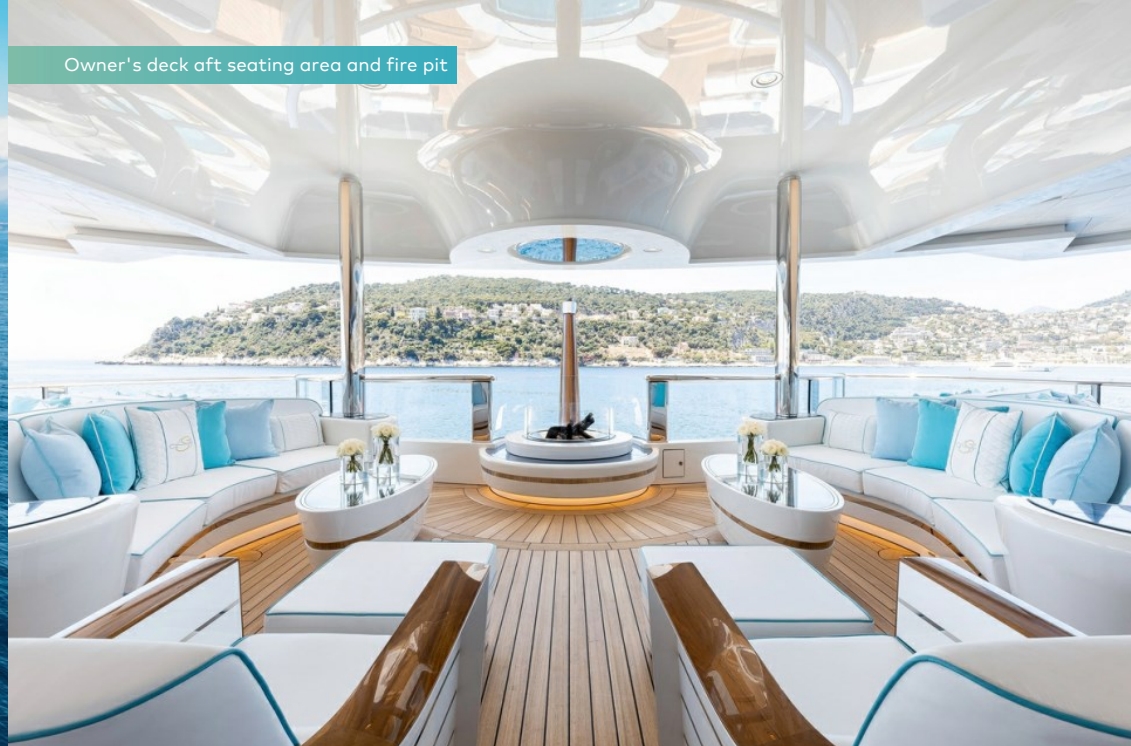
Zero speed stabilisers to reduce any rolling motion while at anchor

LADY S

Cruising



Owner's deck aft seating area and fire pit



Owner's deck dining area



Main deck pool



BURGESS

Discover the difference.
burgessyachts.com



LADY S

Main deck aft



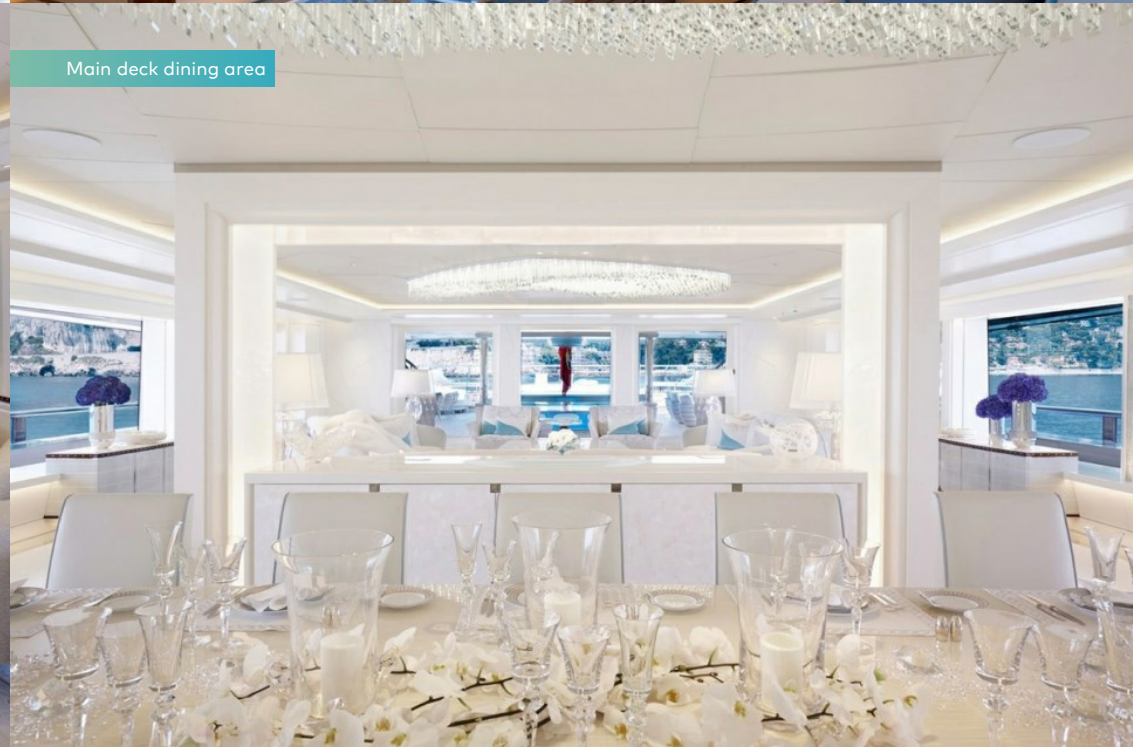
Main deck aft cinema



Main deck lounge



Main deck dining area



LADY S

Upper deck aft owner's cabin



Main deck VIP private lounge and balcony



Main deck double cabin convertible in VIP private lounge and balcony



Bridge deck aft gym



LADY S

Steam room



Massage room



Tender



BURGESS

Discover the difference.
burgessyachts.com



LADY S SPÉCIFICATIONS.



Longueur
93m



Chantier
2019, Feadship, Royal Van Lent, The Netherlands



Designer d'intérieur
Reymond Langton Design



Largeur
14,1m



Tirant d'eau
3,9m



Tonnage brut
2 999



Vitesse de croisière
14 knots



Vitesse maximale
17 knots



Moteurs
2 x 2 100hp Caterpillar



Invités
12



Nb de cabines invités
7 (5 x double, 2 x twin, 2 x additional berths)



Équipage
31

[Voir le yacht sur le site](#)



Annexes & jeux nautiques



1 x Limousine tender



1 x Tender



RYA training centre for jetskis
& waverunners



4 x Waverunners



1 x eFoil



2 x Kayaks



Kite surfing equipment



Waterskis



Snorkelling gear



1 x Deck jacuzzi



4 x SeaBobs



2 x Stand up paddleboards



Inflatable tows



Pool



1 x Flyboard



Wakeboard



Scuba diving equipment



Waterslide



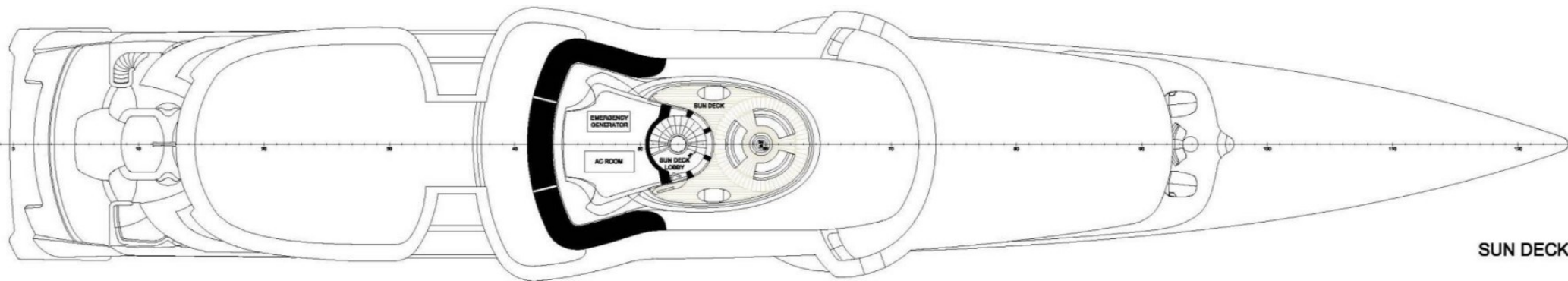
1 x Jetsurf



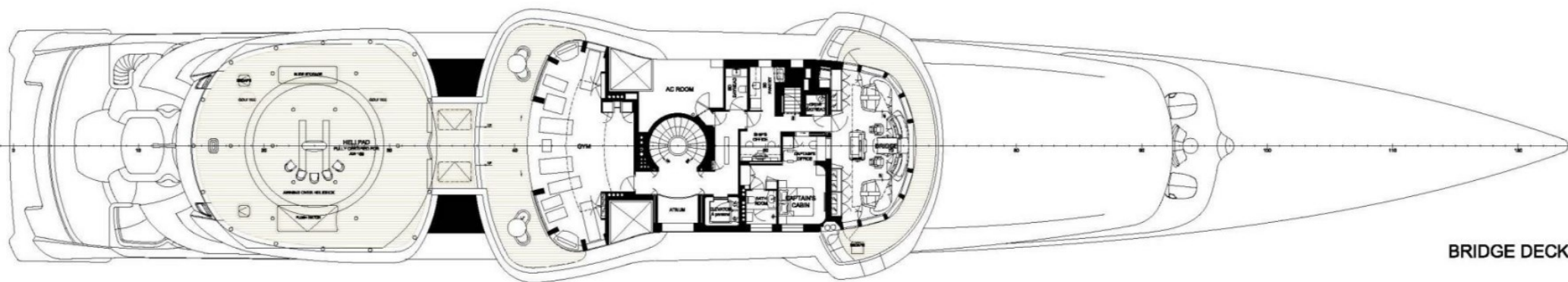
Wakesurf



Fishing gear



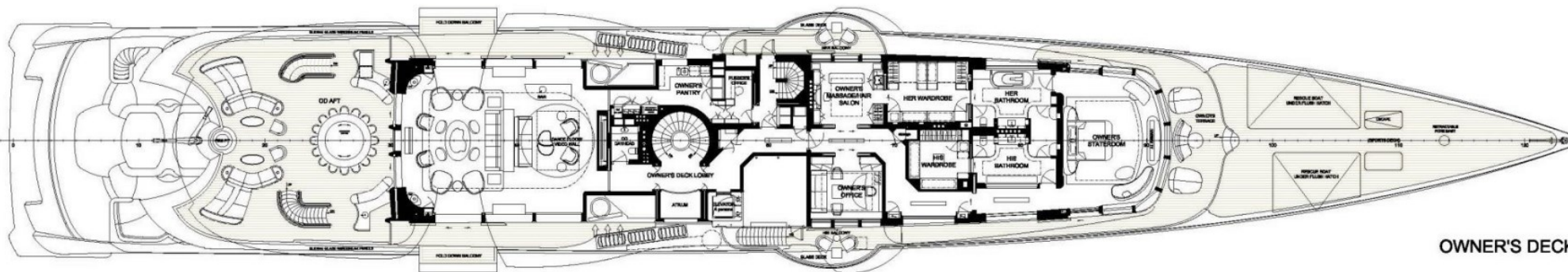
SUN DECK



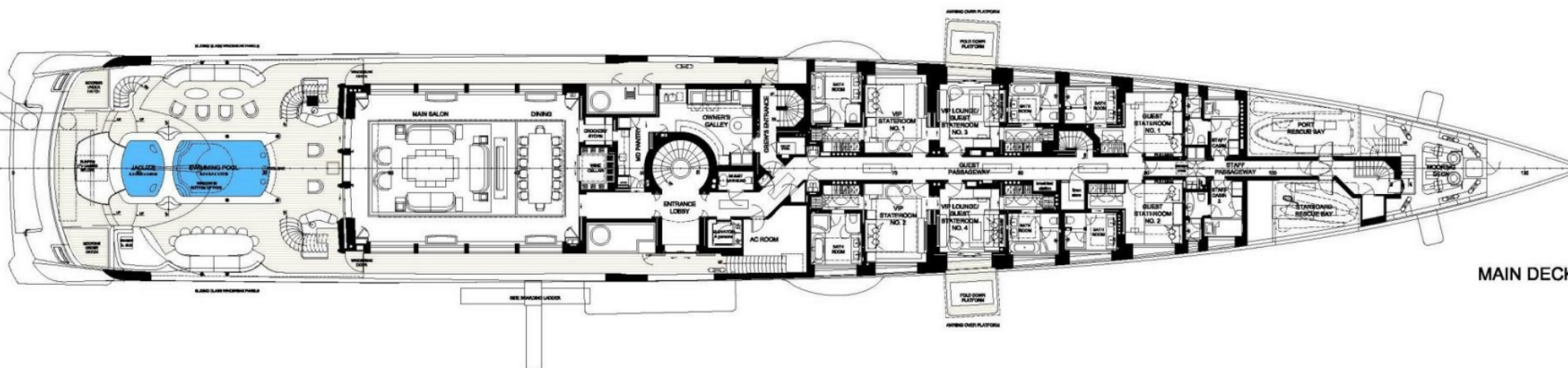
BRIDGE DECK

LADY S

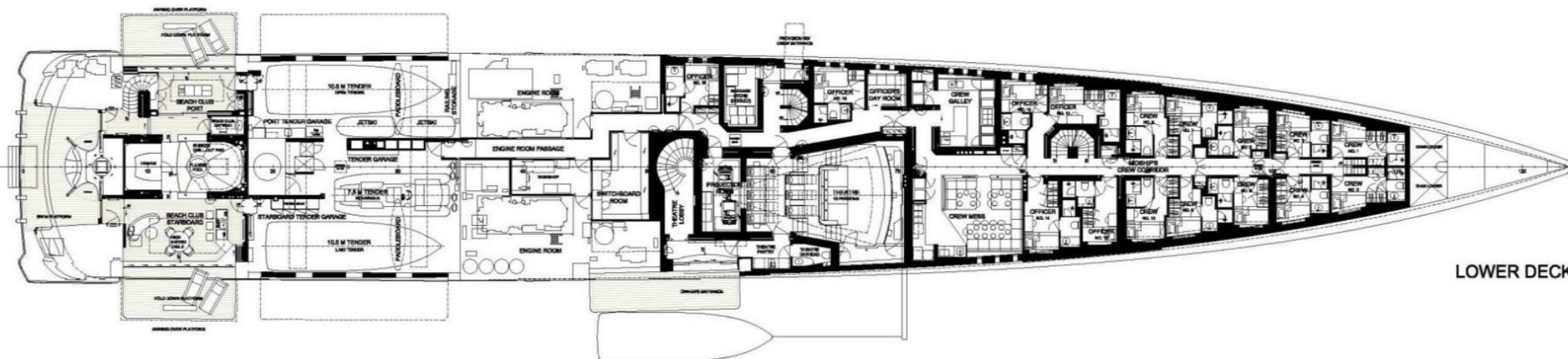
Owner and main decks



OWNER'S DECK



MAIN DECK



LOWER DECK



TANK DECK

BURGESS

WORLD CLASS. WORLD WIDE.

London +44 20 7766 4300	Monaco +377 97 97 81 21	New York +1 212 223 0410	Miami +1 305 672 0150	Singapore +65 9665 8990	Beverly Hills +1 310 424 5112	Palma +34 971 495 413	Athens +30 210 967 1661
	Dubai +971 4 425 5874	Phuket +66 7623 9739	Hong Kong +852 6496 2094	Tokyo +81 46 738 8612	Sydney +61 499 945 557	Mumbai +91 98211 67253	

La publicité de ce(s) navire(s) dans des publications imprimées, sur Internet ou sur tout autre support n'est pas autorisée sans l'autorisation écrite préalable de Burgess.
Toutes les informations sont données de bonne foi et sont considérées comme exactes, mais elles ne peuvent être garanties.

Dernière mise à jour : 01 mars 2024