

LADY S



LADY S

OVERVIEW.

Delivered in 2019, LADY S is an incredibly impressive yacht with an abundance of space inside and out. Her Raymond Langton designed interior of bright white and glistening crystal chandeliers creates a highly contemporary ambience with unique rare materials throughout.

Accommodation for 12 guests across seven cabins includes master suite, two VIP cabins, two doubles and two twin cabins. All guests can enjoy fantastic views through large windows and relax on private fold-out balconies.

Her multiple special features include an IMAX Dolby cinema, nightclub, fully-certified helipad, a sophisticated beach club with hammam and plunge pool which sits beneath the glass-bottomed swimming pool.

Her crew of 33 will assure clients' every whim will be attended to.

Key features

Winner of the 2020 World Superyacht Awards in the Displacement Motor Yacht 2,000GT - 4,999GT category

Spa facilities: massage room, sauna, hammam, ice plunge pool, beauty room

Beach club at sea level

Balcony off two double cabins

Fully equipped gym

Helipad

11m limo tender

Flexible cabin configurations

Elevator

Jacuzzi and pool on the main deck

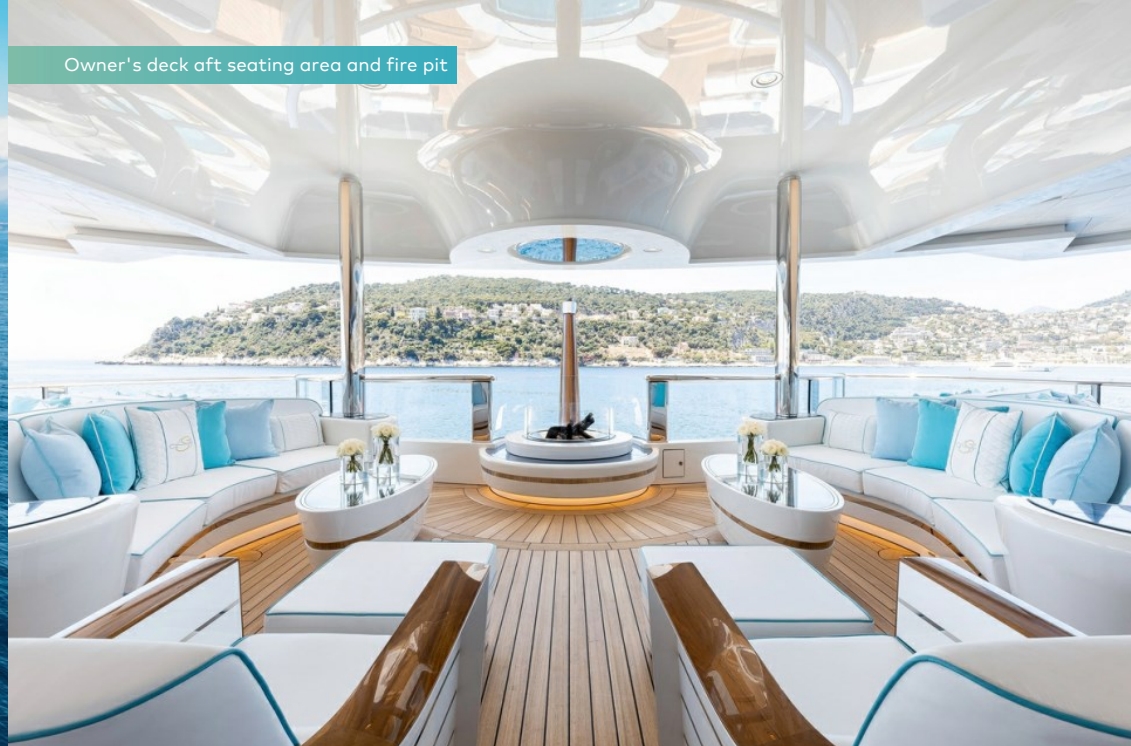
Zero speed stabilisers to reduce any rolling motion while at anchor

LADY S

Cruising



Owner's deck aft seating area and fire pit



Owner's deck dining area



Main deck pool



BURGESS

Discover the difference.
burgessyachts.com



LADY S

Main deck aft



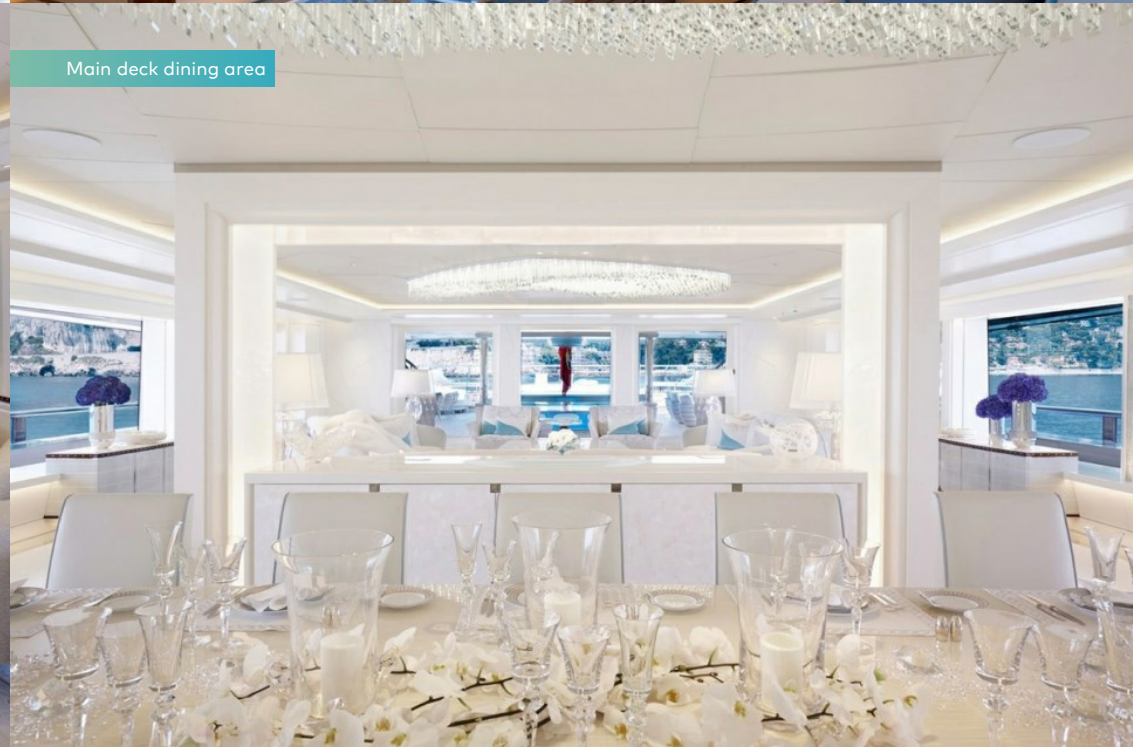
Main deck aft cinema



Main deck lounge



Main deck dining area



LADY S

Upper deck aft owner's cabin



Main deck VIP private lounge and balcony



Main deck double cabin convertible in VIP private lounge and balcony



Bridge deck aft gym



LADY S

Steam room



Massage room



Tender



BURGESS

Discover the difference.
burgessyachts.com



LADY S

SPECIFICATION.



Length
93m (305.1ft)



Built
2019, Feadship, Royal Van Lent, The Netherlands



Interior designer
Reymond Langton Design



Beam
14.1m (46.3ft)



Draft
3.9m (12.8ft)



Gross tonnage
2,999



Cruising speed
14 knots



Maximum speed
17 knots



Engines
2 x 2,100hp Caterpillar



Guests
12



No. of guest cabins
7 (5 x double, 2 x twin, 2 x additional berths)



Crew
31

[View yacht on website](#)



EQUIPMENT.

Tenders & toys



1 x Limousine tender



1 x Tender



1 x Deck jacuzzi



Pool



Waterslide



RYA training centre for jetskis & waverunners



4 x Waverunners



4 x SeaBobs



1 x Flyboard



1 x Jetsurf



1 x eFoil



2 x Kayaks



2 x Stand up paddleboards



Wakeboard



Wakesurf



Kite surfing equipment



Waterskis



Inflatable toys



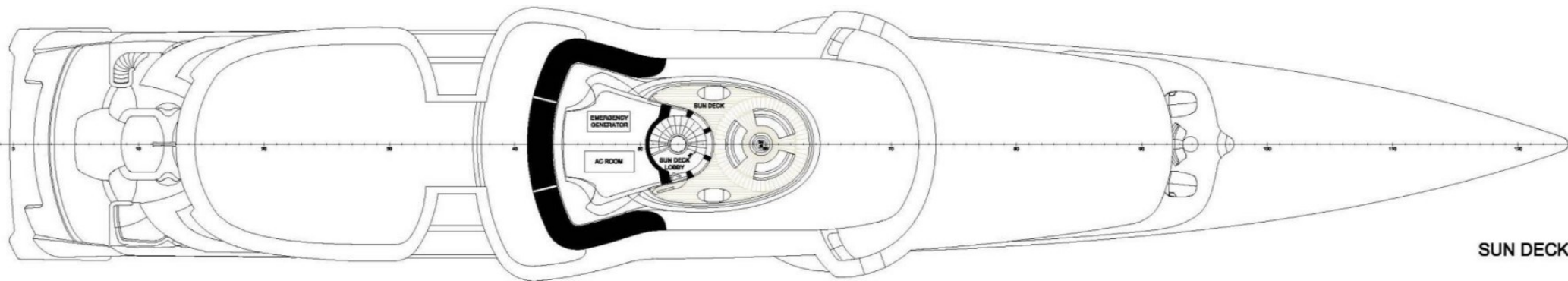
Scuba diving equipment



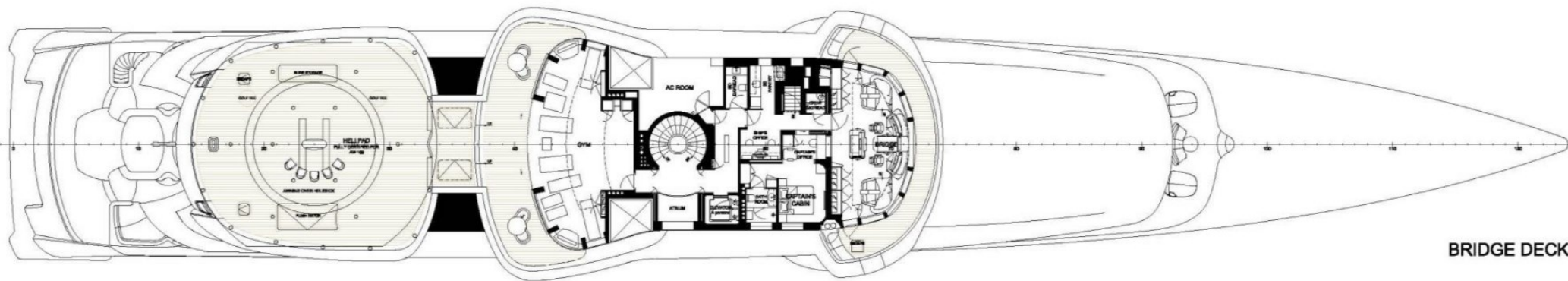
Fishing gear



Snorkelling gear



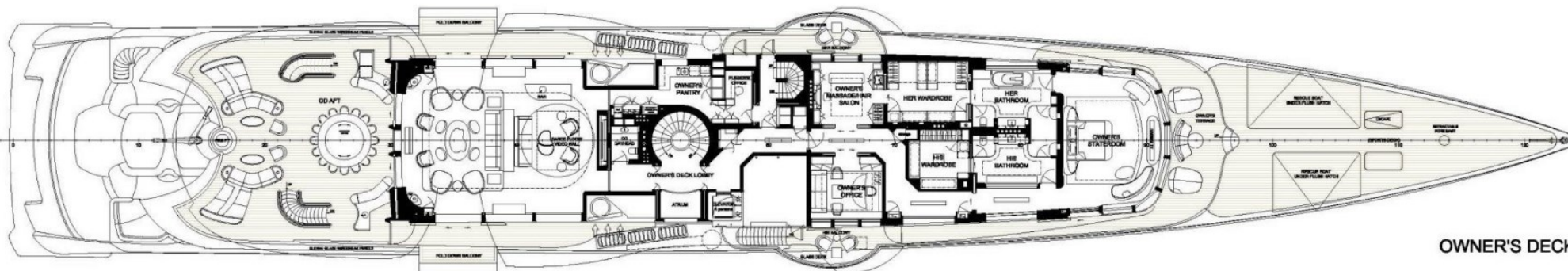
SUN DECK



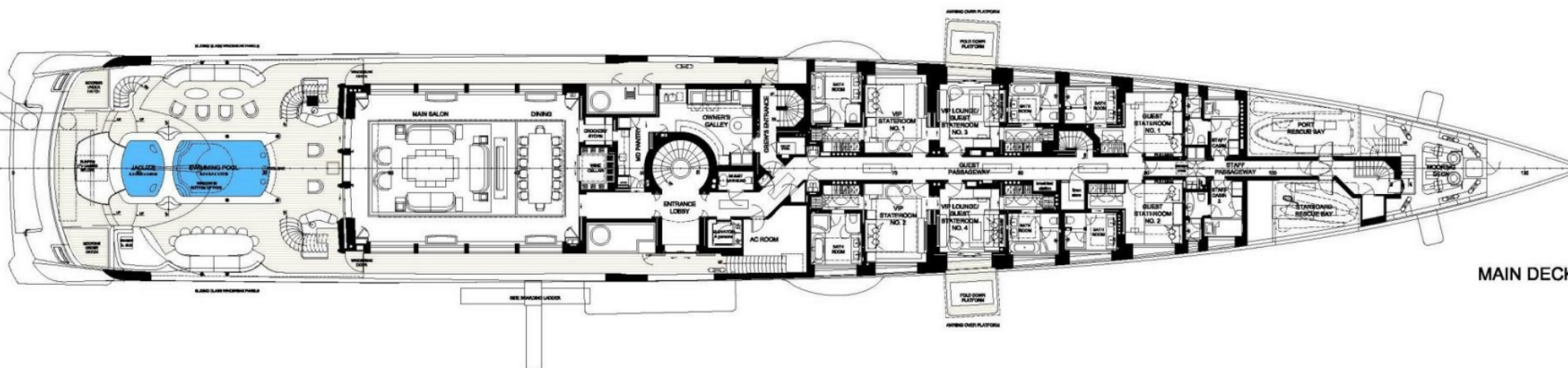
BRIDGE DECK

LADY S

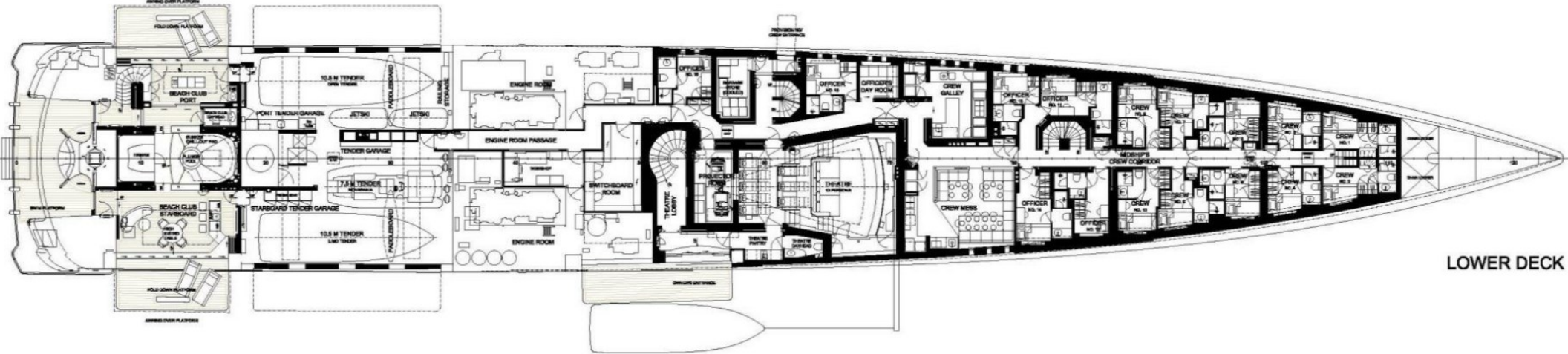
Owner and main decks



OWNER'S DECK



MAIN DECK



LOWER DECK



TANK DECK

BURGESS

WORLD CLASS. WORLD WIDE.

London +44 20 7766 4300	Monaco +377 97 97 81 21	New York +1 212 223 0410	Miami +1 305 672 0150	Singapore +65 9665 8990	Beverly Hills +1 310 424 5112	Palma +34 971 495 413	Athens +30 210 967 1661
	Dubai +971 4 425 5874	Phuket +66 7623 9739	Hong Kong +852 6496 2094	Tokyo +81 46 738 8612	Sydney +61 499 945 557	Mumbai +91 98211 67253	

Advertising of these vessel(s) in printed publications, on the internet or in any other medium is not permitted without prior written permission from Burgess. All particulars are given in good faith and are believed correct but they cannot be guaranteed.

Last updated: 01 March 2024