

# LADY LARA

---



LADY LARA

# OVERVIEW.

**The spectacular LADY LARA is one of a handful of yachts over 90m available for charter, and it's no exaggeration to say she redefines elegance and expectations. She is simply one of the finest yachts available for charter today.**

From the leather-seated cinema on the tank deck (accessed via a glass lift) to her sun deck pool and jacuzzi, five decks above, no expense was spared to create this fantastic yacht. She features commissioned artwork by Damian Hirst – hints of which can be found on every deck, in every guest suite, and smaller art pieces around the yacht (as well as in the yacht's chinaware), Fendi furniture and furnishings throughout, and a beautiful white-themed main saloon adorned with white onyx and sycamore; dining and lounge areas are divided by a Steinway player piano, rarely are charter yachts as impressive as this.

Her wellness facilities remain unrivalled, LADY LARA features a full spa area including an ice fountain – to refresh after time in the sauna or hammam, a mud bath and jet bathroom, a treatment and massage room as well as a fully-equipped gym on the bridge deck; curved glass doors can be fully opened to give an al fresco feel to your work out.

There are so many beautiful areas that make LADY LARA stand out amongst the few yachts that rival her. From the beach club that can transform from a cosy bar and sea terrace to take over the full width, two majestic VIP guest suites with sea balconies, or the 8,5 x 3,5m (27.8ft x 11.5ft) pool on the main deck; an al fresco lounge area seamlessly blends to the poolside terraces adorned with stylish sun loungers. This area converts to a dancefloor with a built-in DJ system and party lights. The attention to detail, and guest relaxation, are found everywhere.

The master suite is the epitome of luxury, not only do you get a 180-degree panoramic view courtesy of floor-to-ceiling windows, you have a stunning skylight that allows natural light to flood the suite. Ahead there's your private terrace and uninterrupted views over the far-reaching flush foredeck, while to the rear of the suite, you'll discover his and hers en suite bathrooms, dressing rooms and a glorious private office. Moving aft you'll be wowed by the bridge deck lounge bar area and a formal dining area where sliding glass walls can provide shelter and create a winter garden with ease.

Wherever you are on board LADY LARA, you and your guests will be amazed by all she offers.

## Key features

---

**Iconic Reymond Langton designed Lurssen built in 2015**

---

**Oversized main deck swimming pool and owner's suite with private jacuzzi**

---

**Beach club with fold down sea terrace**

---

**Luxurious cinema room**

---

**Zero speed stabilisers to reduce any rolling motion while at anchor**

---

# LADY LARA

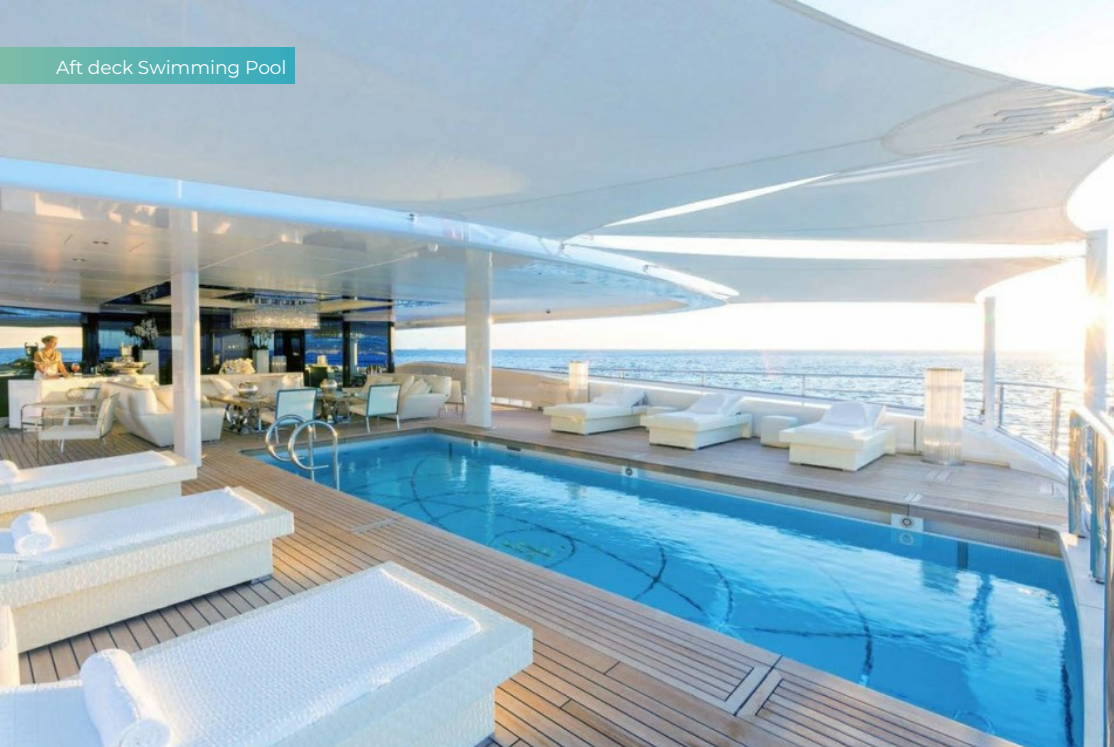
Tenders



Aerial view



Aft deck Swimming Pool



Main deck lounge



# LADY LARA

Piano



Main deck dining area



Main deck dining area



Staircase & Lobby



LADY LARA

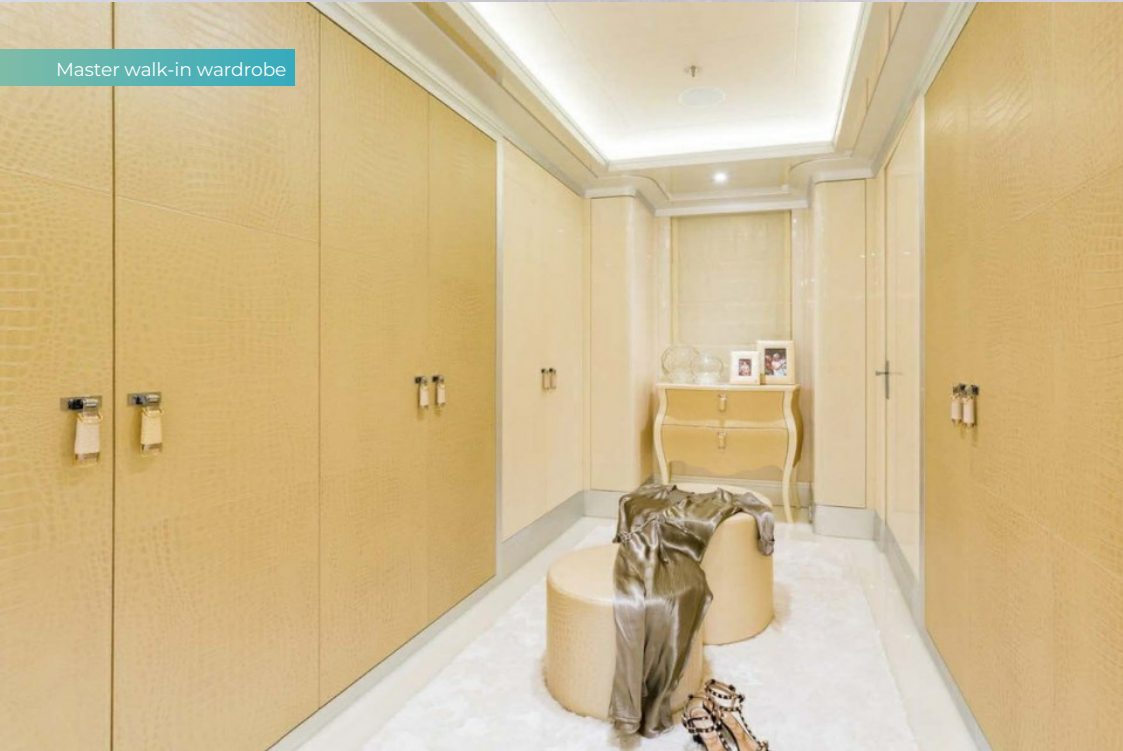
Master cabin



Owner's deck



Master walk-in wardrobe



Master's bathroom en suite



LADY LARA

# SPECIFICATION.



Length  
**91m (298.5ft)**



Built  
**2015 (refitted 2023), Lurssen-Werft, Germany**



Interior designer  
**Reymond Langton Design**



Beam  
**15m (49.2ft)**



Draft  
**4m (13.1ft)**



Gross tonnage  
**2,945**



Cruising speed  
**12 knots**



Maximum speed  
**17 knots**



Guests  
**12**



No. of guest cabins  
**8 (3 × double, 5 × double/twin)**



Crew  
**27**

[View yacht on website](#)



LADY LARA

# TENDERS & TOYS



1 x Towed tender



2 x Tenders



2 x Stand up jetskis



2 x SeaBobs



1 x eFoil



1 x Kayak



2 x Stand up paddleboards



Wakeboard



Wakesurf



Wakeskate



Waterskis



Trampoline



Inflatable toys



Scuba diving equipment



Snorkelling gear



Fishing gear

LADY LARA

# FITNESS & WELLNESS



Free weights



Kinesis machine



Pilates reformer



Power plate



Rowing machine



Treadmill



Beauty salon



Hair salon



Hammam/Steam room

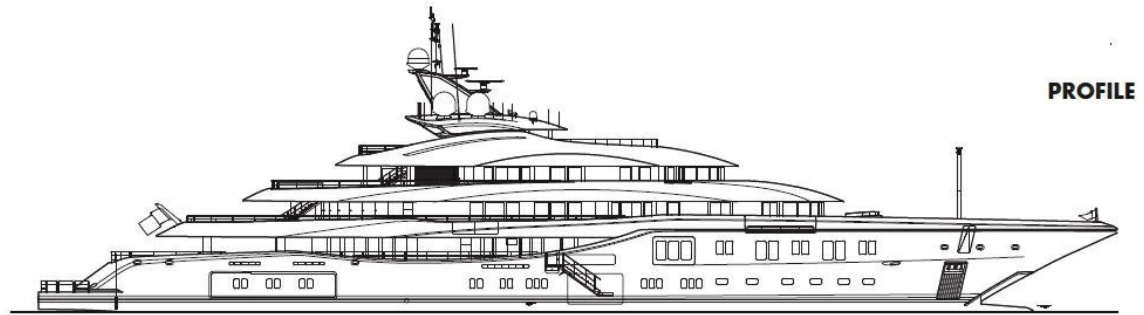


Massage room

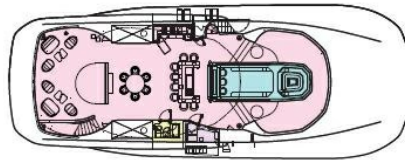


Sauna

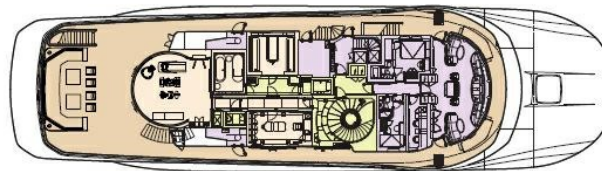




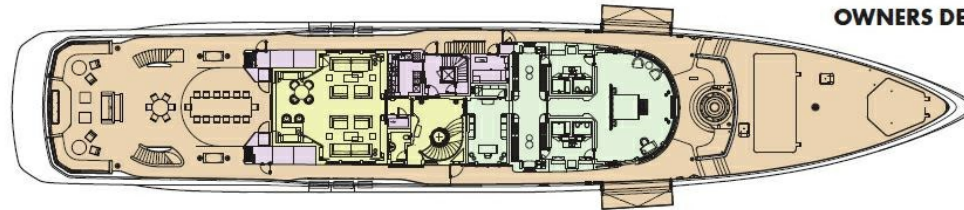
PROFILE



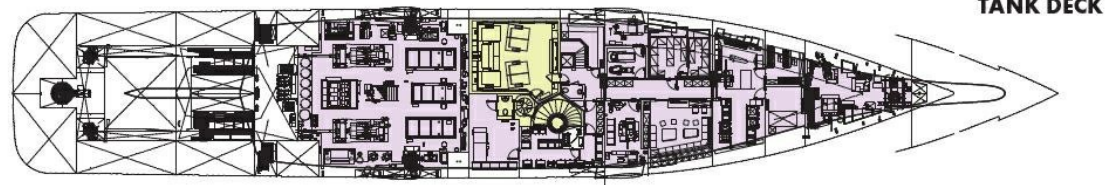
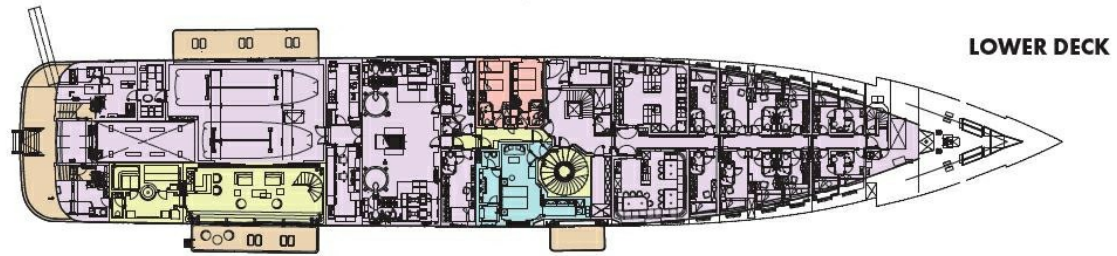
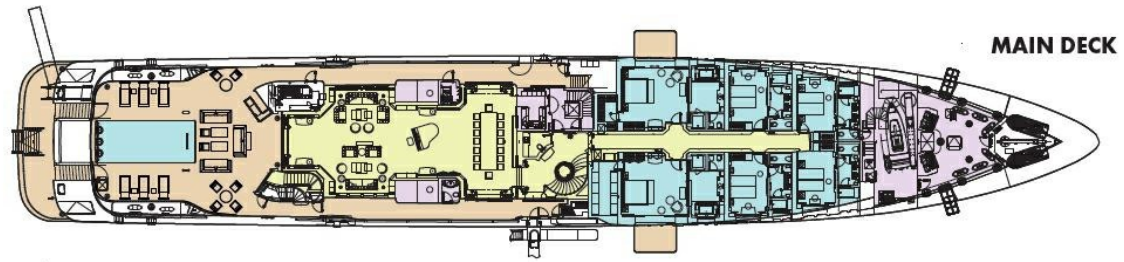
SUN DECK



BRIDGE DECK



OWNERS DECK



# BURGESS

# WORLD CLASS. WORLD WIDE.

<b>London</b> +44 20 7766 4300	<b>Monaco</b> +377 97 97 81 21	<b>New York</b> +1 212 223 0410	<b>Miami</b> +1 305 672 0150	<b>Singapore</b> +65 9665 8990	<b>Beverly Hills</b> +1 310 424 5112	<b>Palma</b> +34 971 495 413	<b>Athens</b> +30 210 967 1661
<b>Dubai</b> +971 4 425 5874	<b>Phuket</b> +66 7623 9739	<b>Hong Kong</b> +852 6496 2094	<b>Tokyo</b> +81 46 738 8612	<b>Sydney</b> +61 499 945 557	<b>Mumbai</b> +91 98211 67253	<b>Shanghai</b> +86 187 0898 6800	<b>Rio de Janeiro</b> +55 21 2553-3238
<b>Aspen</b> +1 970 710 2294							

Advertising of these vessel(s) in printed publications, on the internet or in any other medium is not permitted without prior written permission from Burgess. All particulars are given in good faith and are believed correct but they cannot be guaranteed.

Last updated: 14 February 2025