

# LADY ELAINE

---



LADY ELAINE

# APERÇU.

**Introducing LADY ELAINE, a magnificent 163-foot (49.68-meter) tri-deck motor yacht built by the renowned American shipyard Christensen in 2008. With extensive refits in 2018 and 2024, she seamlessly blends classic elegance with modern luxury. Her refined interior showcases high-gloss Sapele Mahogany woodwork, expansive living spaces, and contemporary updates that enhance both comfort and sophistication. Boasting over 6,900 square feet of interior space, LADY ELAINE is designed for ultimate relaxation and entertainment.**

Accommodating up to 12 guests, LADY ELAINE features six opulent staterooms, including a full-beam master suite with his and hers en-suite bathrooms, a VIP suite with a private Jacuzzi tub, and additional king, double, and twin guest staterooms. An elevator connects all decks for seamless access, while alfresco dining areas, a spacious sundeck with a hot tub, and multiple lounge areas create the perfect outdoor retreat. Advanced entertainment systems, including a vast movie library and high-definition TVs throughout, ensure world-class onboard leisure.

With a cruising speed of 13 knots and an impressive 30-foot (9-meter) beam, LADY ELAINE delivers both stability and exceptional performance. Whether exploring the Bahamas, Florida, or New England, she offers an unforgettable yachting experience, complete with a professional crew of nine dedicated to five-star service. Ideal for charter or private ownership, LADY ELAINE embodies the pinnacle of luxury, comfort, and adventure on the open seas.

## Principales caractéristiques

---

**Recently refitted**

---

**Flexible cabin configurations**

---

**Exercise equipment**

---

**Elevator serving all decks**

---

**11.2m Intrepid towed tender**

---

**Jacuzzi on the sun deck**

---

**Zero speed stabilisers to reduce any rolling motion while at anchor**

---

LADY ELAINE

Sun deck



Sun deck jacuzzi



Sun deck jacuzzi



Sun deck



# LADY ELAINE

Sun deck



Sun deck



Upper deck forward



Upper deck aft dining



LADY ELAINE

Upper deck aft



Main deck aft



Main deck lounge



Main deck lounge



LADY ELAINE

# SPECIFICATIONS.



Longueur  
**49,7m**



Chantier  
**2008 (refitted 2018), Christensen Shipyards,  
United States Of America**



Designer d'intérieur  
**John Staluppi & Carol Williamson & Associates**



Largeur  
**9m**



Tirant d'eau  
**2,5m**



Tonnage brut  
**498**



Vitesse de croisière  
**12 knots**



Vitesse maximale  
**16 knots**



Consommation de carburant en vitesse de croisière  
**288 litres par heure**



Moteurs  
**2 x 1 700hp MTU**



Invités  
**12**



Nb de cabines invités  
**6 (4 x double, 2 x twin, 2 x additional berths)**



Équipage  
**9**

[Voir le yacht sur le site](#)



LADY ELAINE

# ANNEXES & JEUX NAUTIQUES



1 x Towed tender



1 x Tender



1 x Deck jacuzzi



4 x Waverunners



3 x SeaBobs



2 x Kayaks



2 x Stand up paddleboards



Wakeboard



Inflatable platform



Scuba diving equipment



Snorkelling gear



Fishing gear

LADY ELAINE

# REMISE EN FORME & BIEN-ETRE



Free weights



Treadmill



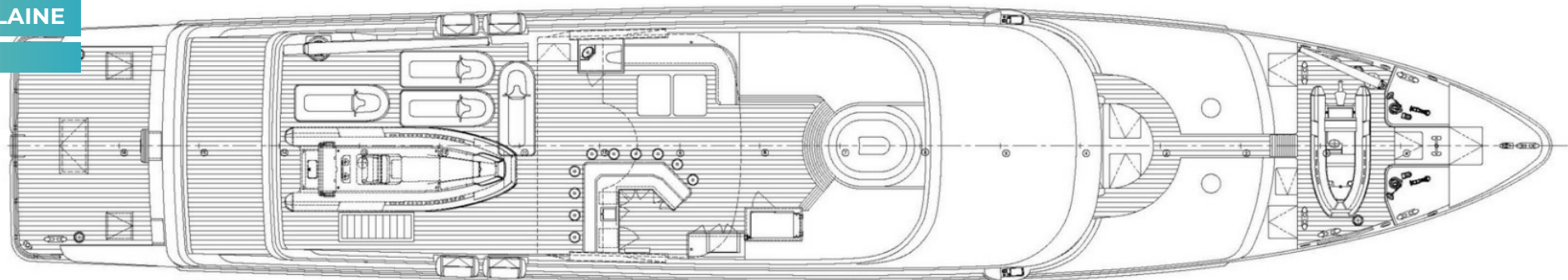
Yoga mats



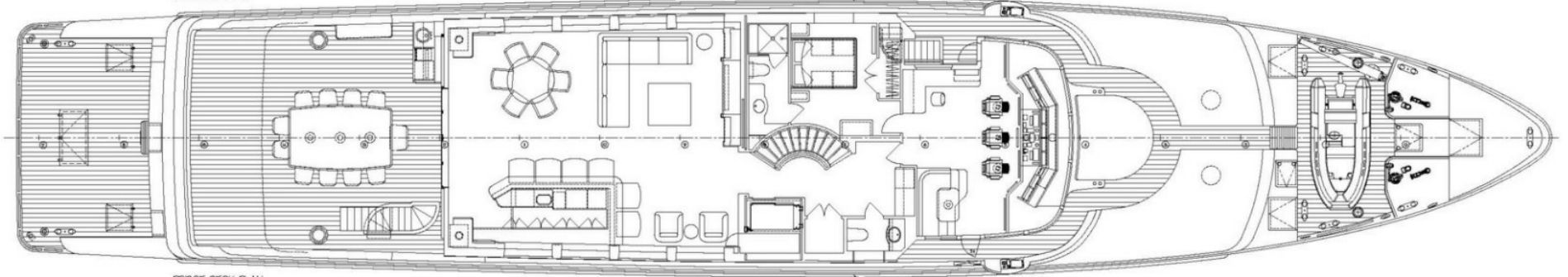


# LADY ELAINE

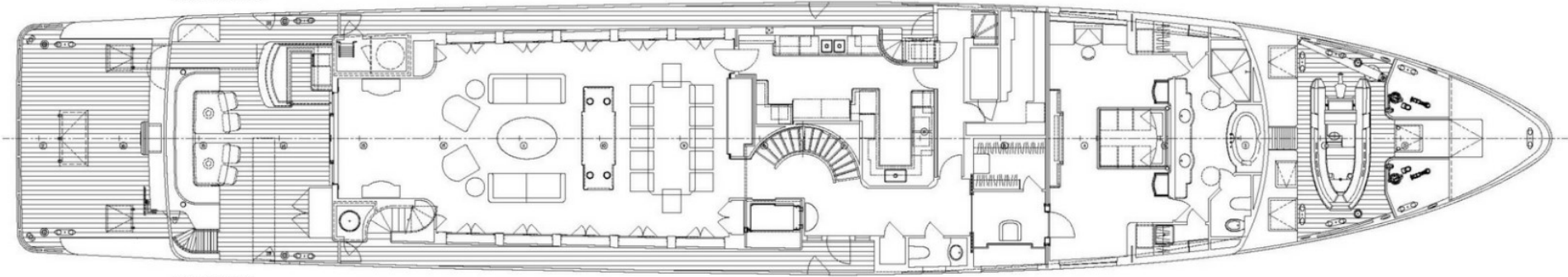
Deck plans



SUN DECK PLAN



BRIDGE DECK PLAN



MAIN DECK PLAN



LOWER DECK PLAN

# BURGESS

# WORLD CLASS. WORLD WIDE.

<b>London</b> +44 20 7766 4300	<b>Monaco</b> +377 97 97 81 21	<b>New York</b> +1 212 223 0410	<b>Miami</b> +1 305 672 0150	<b>Singapore</b> +65 9665 8990	<b>Beverly Hills</b> +1 310 424 5112	<b>Palma</b> +34 971 495 413	<b>Athens</b> +30 210 967 1661
<b>Dubai</b> +971 4 425 5874	<b>Phuket</b> +66 7623 9739	<b>Hong Kong</b> +852 6496 2094	<b>Tokyo</b> +81 46 738 8612	<b>Sydney</b> +61 499 945 557	<b>Mumbai</b> +91 98211 67253	<b>Shanghai</b> +86 187 0898 6800	<b>Rio de Janeiro</b> +55 21 2553-3238
<b>Aspen</b> +1 970 710 2294							

La publicité de ce(s) navire(s) dans des publications imprimées, sur Internet ou sur tout autre support n'est pas autorisée sans l'autorisation écrite préalable de Burgess.  
Toutes les informations sont données de bonne foi et sont considérées comme exactes, mais elles ne peuvent être garanties.

Dernière mise à jour : 28 février 2025