

LADY A



LADY A SPÉCIFICATIONS.



Prix demandé
EUR 13 950 000



Chantier
2019, Sanlorenzo, Italy



Longueur
40,8m



Largeur
7,9m



Tirant d'eau
2,6m



Tonnage brut
338



Vitesse de croisière
12 knots



Vitesse maximale
22 knots



Autonomie
1 200 nm



Pavillon
Cayman Islands



Position
Middle East



Classe
ABS, A1 Yachting Service AMS & MCA, LY3



Designer extérieur
Francesco Paszkowski Design



Designer d'intérieur
Francesco Paszkowski Design



Construction
Hull - Aluminium, Superstructure - Aluminium,
Deck - Teak



Équipage
6



Invités
10



Cabines
5 (4 × double, 1 × twin)



Moteurs
2 × 2 600hp MTU



Propulsion
Twin screw diesel yacht

[Voir le yacht sur le site](#)

[Regarder la vidéo du yacht](#)



LADY A

Profile



At anchor



At anchor



Guest lounge



BURGESS

Discover the difference.
burgessyachts.com



LADY A

Guest lounge



Guest lounge



Guest lounge



Guest lounge



BURGESS

Discover the difference.
burgessyachts.com



LADY A

Guest bathroom



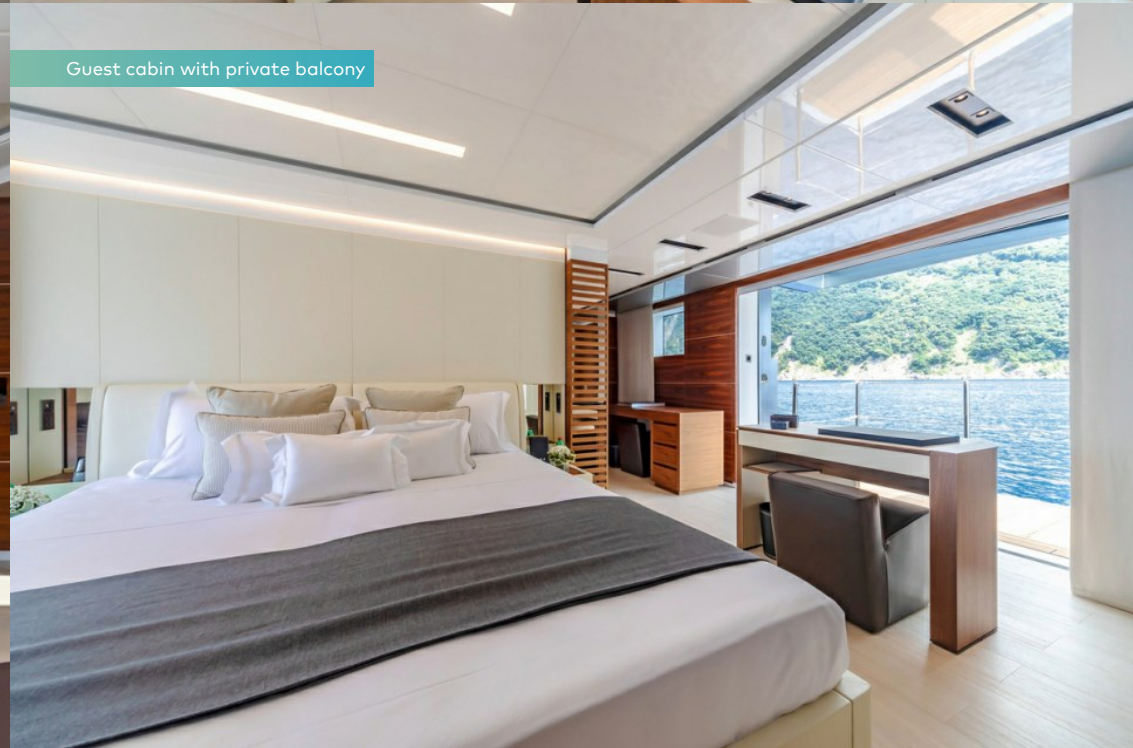
Guest cabin with private balcony



Guest cabin



Guest cabin with private balcony



LADY A

Private balcony open



Guest bathroom



Guest bathroom



BURGESS

Discover the difference.
burgessyachts.com



LADY A

Guest cabin



Guest cabin



Guest cabin



LADY A

Guest twin cabin



Guest bathroom



Guest lounge



Guest lounge



LADY A

Guest lounge



Guest lounge



Bridge



Main deck port side



LADY A

Main deck aft



Main deck aft



Main deck aft



Sun deck



LADY A

Sun deck



Sun deck



Sundeck



Foredeck



BURGESS

Discover the difference.
burgessyachts.com



LADY A

At anchor



At anchor



Aerial View



BURGESS

Discover the difference.
burgessyachts.com



LADY A

APERÇU.

LADY A is a 40.8m (133.9ft) motor yacht delivered in 2019 by the famed and world renowned Italian shipyard, Sanlorenzo. Her interior and exterior were designed by the well known and successful Francesco Paszkowski. LADY A has accommodation for 10 guests in five cabins including the master cabin being situated on the main deck with the remaining four cabins being located on the lower deck.

LADY A has a sleek exterior design with a contemporary and spacious interior design. One of her unique features are fold-down balconies found throughout the guest common areas and cabins allowing plenty of natural light to flood the spaces and allow for great views of the surroundings. On the sundeck you will find plenty of seating as well as an array of sunbeds aft. Forward of the bridge on the foredeck you will also find a large sunbed where guests can enjoy the sun and breeze underway or at anchor.

LADY A is powered by 2x 2,600 HP MTU engines which give her a cruising speed of 17 knots and a maximum speed of 20 knots. She is also equipped with zero speed stabilisers giving guests comfort in less than ideal conditions.

Principales caractéristiques

Most recent SL 40 alloy available for sale

Private use only with low engine hours

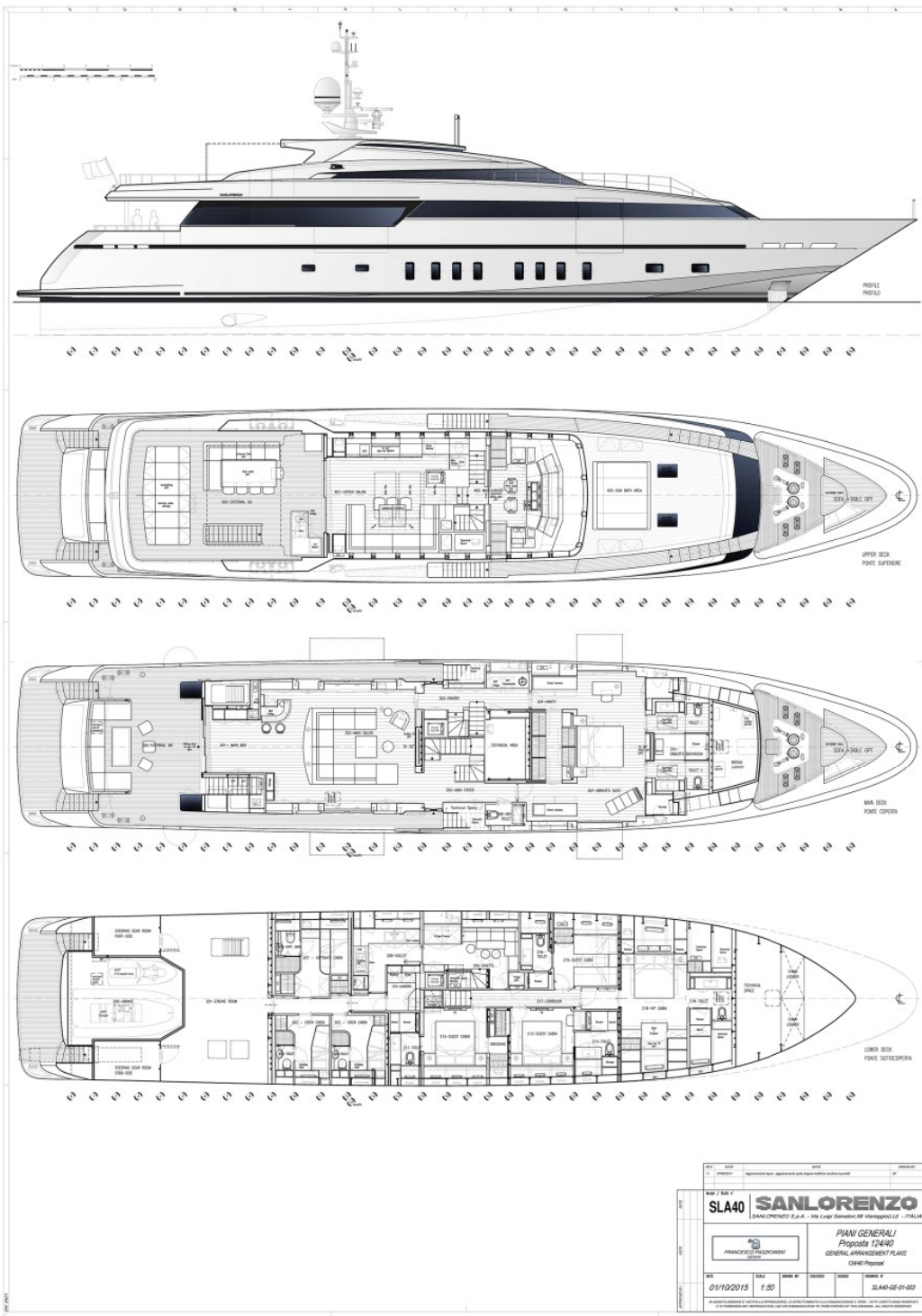
Contemporary interior design with a spacious 5 cabin layout for 10 guests

Zero speed stabilisers for unmatched guest comfort

Impressive maximum speed of 20 knots

Annexes

5.4m Novurania 540 Equator aeries



BURGESS

WORLD CLASS. WORLD WIDE.

London +44 20 7766 4300	Monaco +377 97 97 81 21	New York +1 212 223 0410	Miami +1 305 672 0150	Singapore +65 9665 8990	Beverly Hills +1 310 424 5112	Palma +34 971 495 413	Athens +30 210 967 1661
	Dubai +971 4 425 5874	Phuket +66 7623 9739	Hong Kong +852 6496 2094	Tokyo +81 46 738 8612	Sydney +61 499 945 557	Mumbai +91 98211 67253	

La publicité de ce(s) navire(s) dans des publications imprimées, sur Internet ou sur tout autre support n'est pas autorisée sans l'autorisation écrite préalable de Burgess.
Toutes les informations sont données de bonne foi et sont considérées comme exactes, mais elles ne peuvent être garanties.

Dernière mise à jour : 14 mars 2024