

LA DATCHA



LA DATCHA

APERÇU.

Allow your imagination to run wild with a charter on LA DATCHA. This one of a kind expedition yacht will satisfy your wanderlust, wherever that may lead. From heliskiing in Kamchatka to submersible adventures in the Seychelles, no luxury has been spared in creating this ultimate exploration platform.

Wake in the bay of a tropical island and head to the gym for a workout with sea views, followed by time in the hammam and energising ice fountain shower. Then join the group for breakfast in the sky lounge, with its sliding doors opened up to the aft deck for a truly indoor-outdoor mood, while you finalise the day's plans.

Everyone jumps in the helicopters to tour the island, touching down in a nature sanctuary to encounter native animals up close. You are then whisked away to a hillside clearing for a ceremonial dance by local villagers, followed by a delicious lunch while taking in the inspiring views. From here, it is a quick helicopter ride back to LA DATCHA, or a downhill adventure on the fat wheels bicycles, before a tender transfer back to the yacht.

Heading to a new anchorage, you take in the surroundings from the comfort of the observation lounge. At the bow of the upper deck, it provides spectacular views of breaching whales and dolphins and, for an unforgettable experience, you can jump in one of the tenders to get a closer look.

The crew launches the three-person submersible for you to discover a dramatic oceanic drop off, with colossal coral shelves, passing reef sharks and a giant jellyfish drifting by. Pull on a wet suit and scuba dive among the local sea life, or there are watertoys aplenty for fun near the surface, including jetskis and towables, and a giant waterslide. Round off your afternoon with a relaxing jacuzzi dip on the sun deck, drinking in the stunning scenery, or indulge in a massage before you change for dinner.

LA DATCHA accommodates up to 12 guests in two spacious master suites, a VIP suite and three double cabins. Her interior creates a relaxed, refined ambiance using muted tones and natural materials like backlit stone alongside striking abstract sculptures.

Sundowners are served on the upper deck aft, with the infinite stars gradually appearing as a backdrop. Move inside to enjoy dinner at the main lounge's dining table, with built-in fire features providing an atmospheric glow, while you discuss the day's epic adventures and dream up what tomorrow might bring.

Principales caractéristiques

Spa facilities: hammam, sauna, ice fountain, indoor jacuzzi, massage room

Fully equipped gym

Two commercially certified & operated helicopters

Submersible and two snowscooters

Dive centre with decompression chamber

9m above water observation lounge

Two master cabins

Equipped hospital with dedicated staff member

Glass elevator serving all decks

Jacuzzi on the sun deck

Zero speed stabilisers to reduce any rolling motion while at anchor

LA DATCHA

Cruising



Aerial view



Sun deck jacuzzi



Bridge and upper decks



LA DATCHA

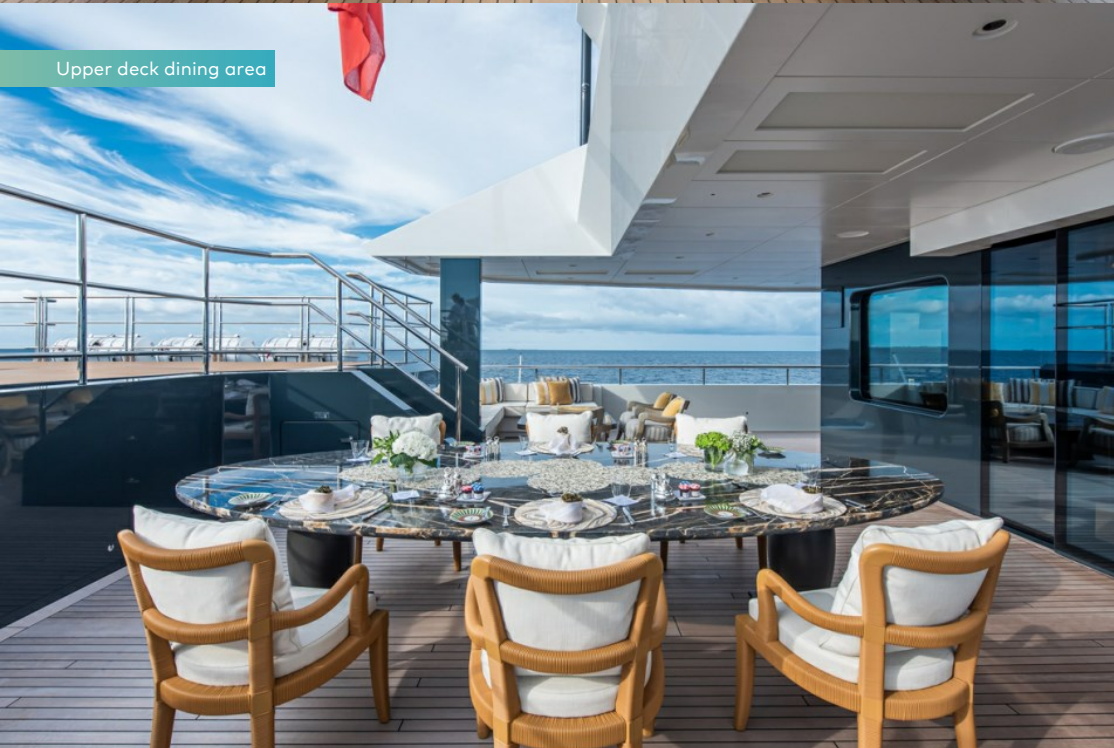
Bridge deck aft lounge



Upper deck dining area



Upper deck dining area



Main deck dining area



LA DATCHA

Main deck lounge



Sky lounge



Sky lounge dining area



Observation lounge



LA DATCHA

Main deck owner's cabin



Upper deck second master cabin - Rendering



Upper deck master cabin - Rendering



Upper deck VIP cabin



LA DATCHA

Double cabin



Spa - Rendering



Spa



Sauna



LA DATCHA

Gym



Toy garage



Decompression chamber (mobile)



Submersible



LA DATCHA

Waverunners



BURGESS

Discover the difference.
burgessyachts.com



LA DATCHA SPÉCIFICATIONS.



Longueur
77m



Chantier
2020, Damen, The Netherlands



Designer d'intérieur
Azure



Largeur
14m



Tirant d'eau
3,8m



Tonnage brut
2 560



Vitesse de croisière
12 knots



Vitesse maximale
14 knots



Consommation de carburant en vitesse de croisière
500 litres par heure



Moteurs
2 x 2 610hp MTU



Invités
12



Nb de cabines invités
6 (2 x double, 3 x double/twin, 1 x twin)



Équipage
25

[Voir le yacht sur le site](#)

[Regarder la vidéo du yacht](#)



Annexes & jeux nautiques



5 × Tenders



1 × Submersible



1 × Deck jacuzzi



4 × Waverunners



4 × SeaBobs



5 × Kayaks



2 × Stand up paddleboards



Surfboard



Kite surfing equipment



Windsurfer



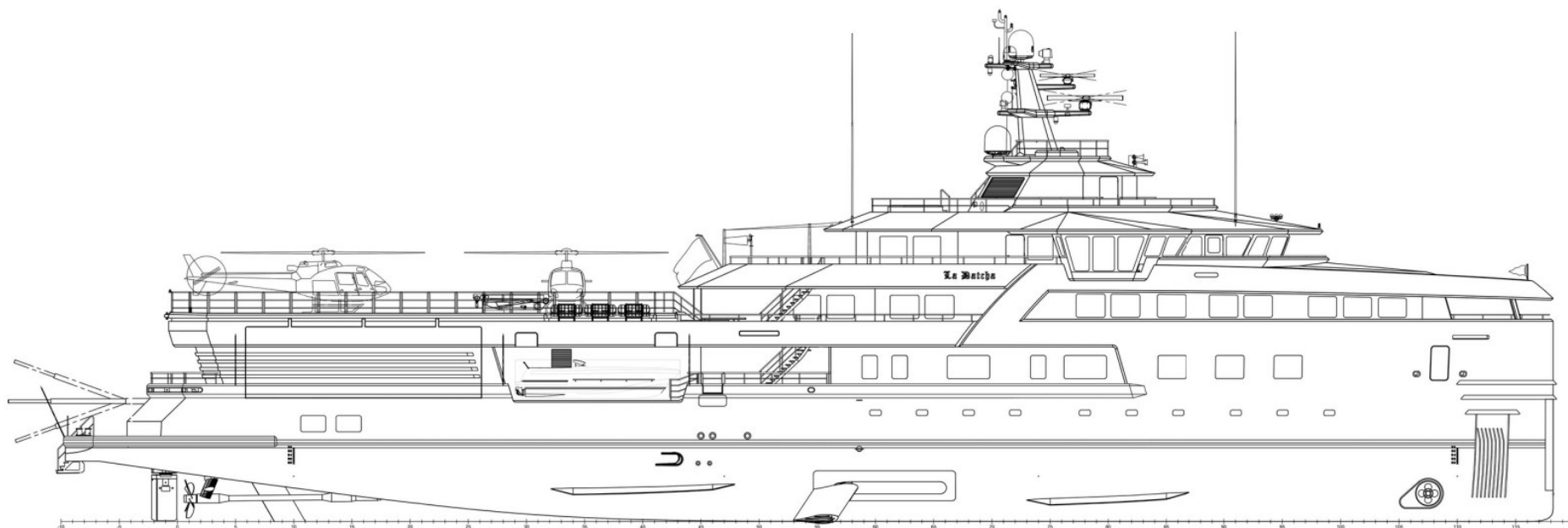
Inflatable tows



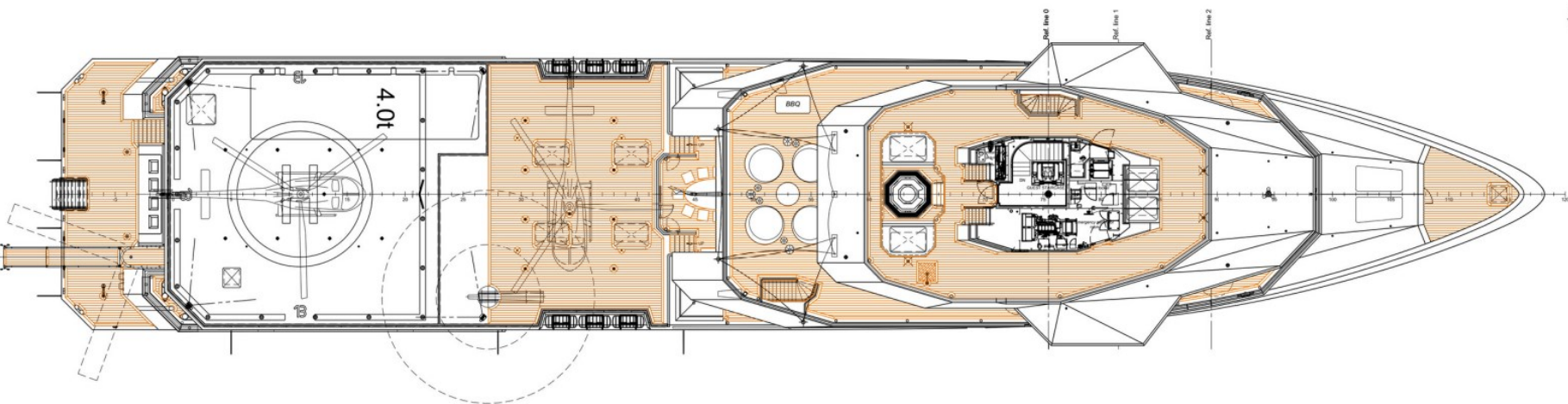
Scuba diving equipment



Fishing gear

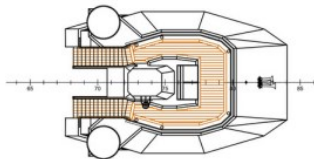


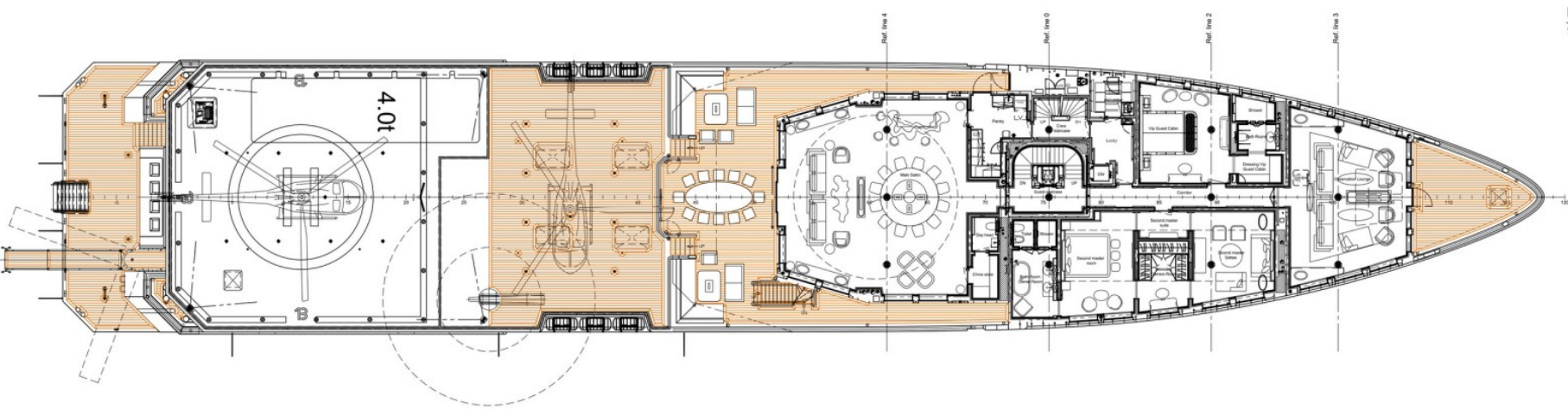
PROFILE VIEW
Starboard Side



SUN DECK
15600 Above Base

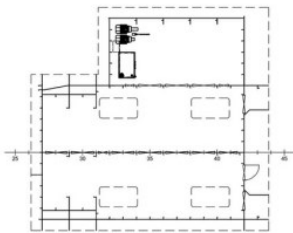
CROWS NEST
18600 Above Base

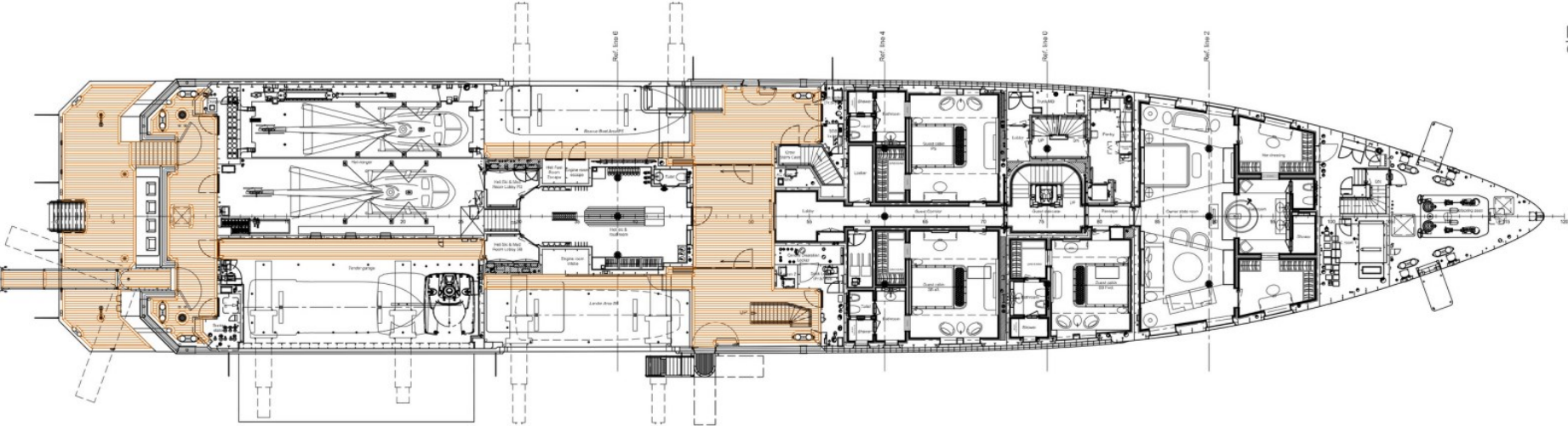




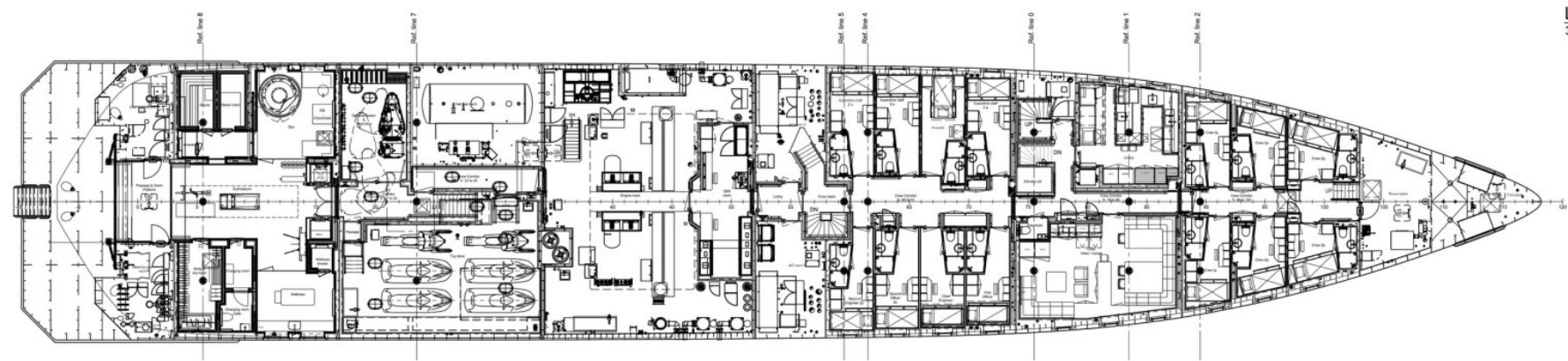
UPPER DECK
9550 Above Base

STORAGE SPACE
9950 Above Base





MAIN DECK
6550 Above Base



LOWER DECK
3900 Above Base

STORAGE SPACE
1900 Above Base



BURGESS

WORLD CLASS. WORLD WIDE.

London +44 20 7766 4300	Monaco +377 97 97 81 21	New York +1 212 223 0410	Miami +1 305 672 0150	Singapore +65 9665 8990	Beverly Hills +1 310 424 5112	Palma +34 971 495 413	Athens +30 210 967 1661
Dubai +971 4 425 5874	Phuket +66 7623 9739	Hong Kong +852 6496 2094	Tokyo +81 46 738 8612	Sydney +61 499 945 557	Mumbai +91 98211 67253	Shanghai +86 187 0898 6800	Rio de Janeiro +55 21 2553-3238

La publicité de ce(s) navire(s) dans des publications imprimées, sur Internet ou sur tout autre support n'est pas autorisée sans l'autorisation écrite préalable de Burgess.
Toutes les informations sont données de bonne foi et sont considérées comme exactes, mais elles ne peuvent être garanties.

Dernière mise à jour : 16 mai 2024