

# KING BABY

---



# OVERVIEW.

**The ultimate party boat for rock music fans or musicians, KING BABY is a 44-metre (144ft) tri-deck yacht festooned with high-end guitars, rock-inspired art and furniture, carefully curated rock photography and more. Combined with style inspiration from the luxe rock-chic King Baby jewellery brand, she offers a superb yacht charter experience for up to 10 guests in five luxurious cabins, with a unique design aesthetic that has just been thoroughly updated with a major refit in 2023. Let the good times roll!**

Apart from style, space and stability are two of her stand-out features. Notably tall and wide for her size, she offers substantially more interior living space than a typical 44-metre yacht and her main exterior spaces – especially the sundeck – are extra large. Having four dynamic stabiliser fins effectively doubles her ability to prevent any rolling motion whether she's on the move or anchored, so she's impressively stable.

Her sundeck is a spectacular outdoor party zone. The jacuzzi has a three-tier cascading waterfall and a swim-up bar; there's also a big dining table, a large onyx sit-up bar, sun loungers and sunpads, three TVs and two lounge areas. In the heat of the midday sun, there's an exhilarating three-storey water slide so you can launch yourself from the sundeck straight into the sea for a refreshing dip.

She also has two aft-facing decks, each with a covered dining area and a variety of seating spaces, so when you fancy a different vibe or scene you can simply go to a different deck. The foredeck lounge is yet another inviting option where you can sit and strum a guitar in the cool sea breeze or recline with a book or magazine on the expansive sunpads.

KING BABY's interior spaces are alluring, inspiring and supremely comfortable, with large saloons on two levels, audiophile entertainment systems and sharp modern décor to perfectly match the unique rock-inspired décor. Up front on the main deck, the master suite is a spacious full-beam cabin with a big, plush sofa, a study desk, king size bed and a two-person bath as well as a rain room shower in the marble en suite bathroom. The other four cabins – three doubles and a twin, on the lower deck – are all nicely finished in the same signature style.

## Key features

---

**Recently refitted**

---

**Two VIP cabins**

---

**Exercise equipment**

---

**12m Nortech towed tender**

---

**Shaded deck dining and deck areas**

---

**Jacuzzi on the sun deck**

---

**Zero speed stabilisers to reduce any rolling motion while at anchor**

---

# KING BABY

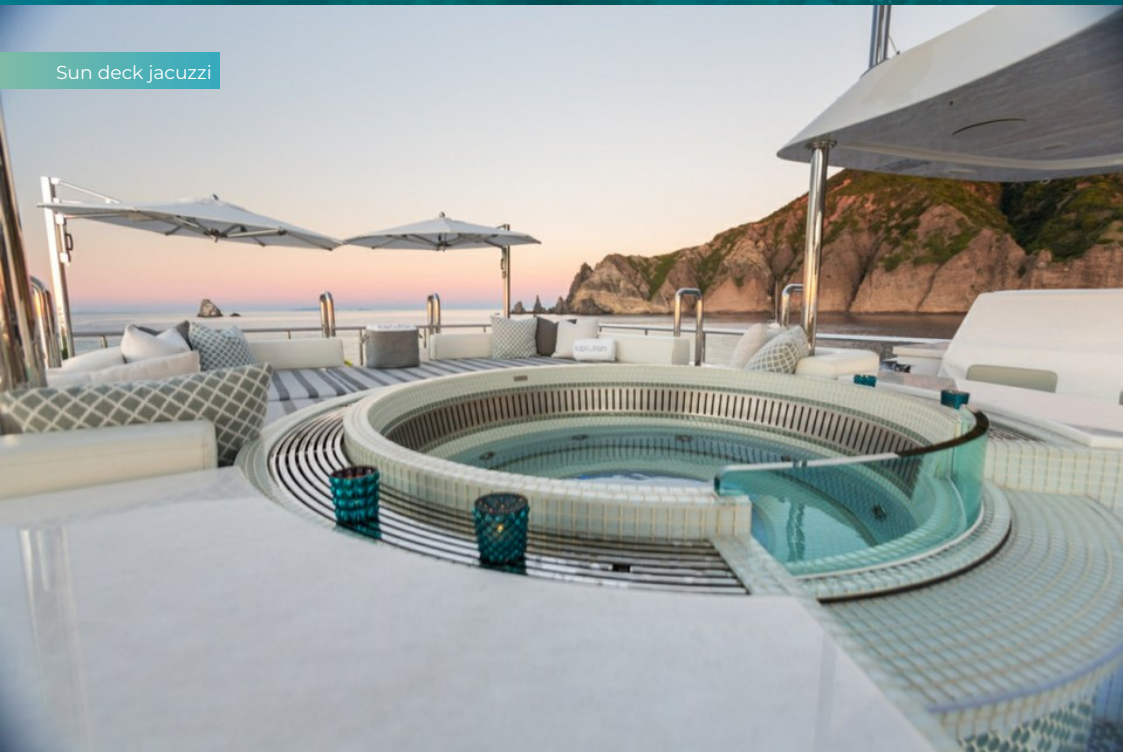
Aerial view



Aerial view



Sun deck jacuzzi



Sun deck



# KING BABY

Sun deck



Sun deck aft loungers



Upper deck aft



Upper deck aft dining



# KING BABY

Main deck aft



Main deck aft dining



Main deck lounge



Main deck lounge



KING BABY

Main deck dining



Sky lounge



Hallway



Main deck master cabin



# KING BABY

Master bathroom en suite



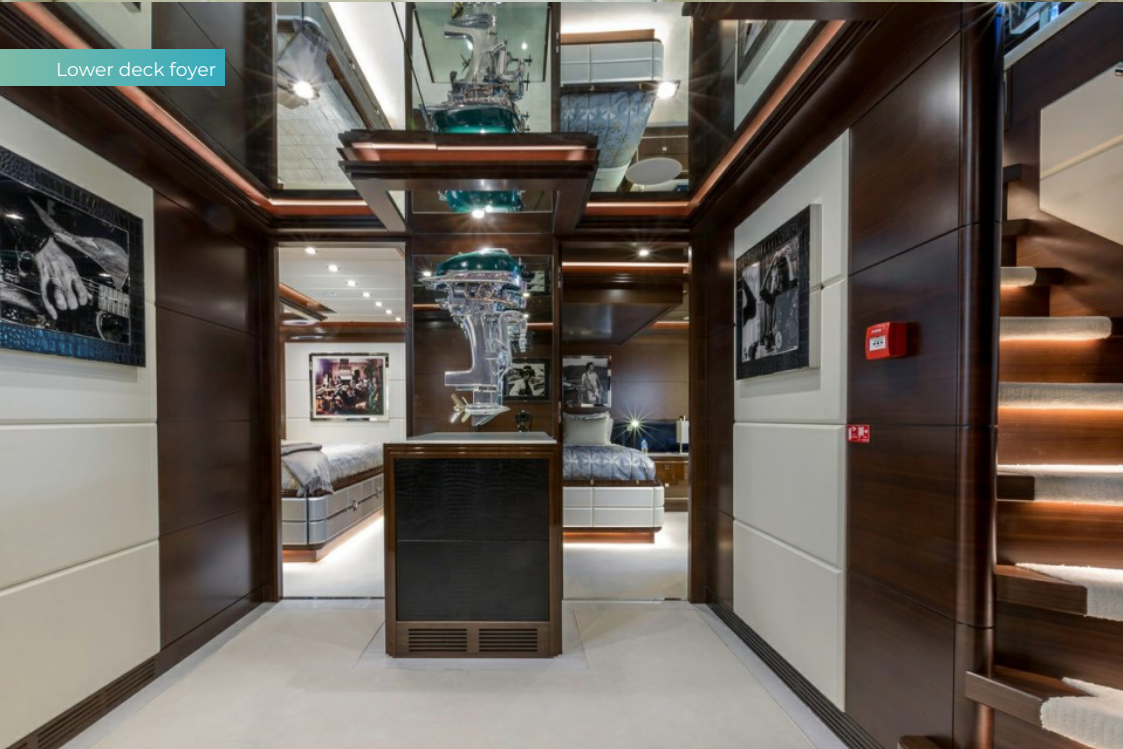
Master bathroom en suite



Lower deck double cabin



Lower deck foyer



# KING BABY

Lower deck double cabin



Lower deck double cabin



Guest bathroom en suite



Lower deck twin cabin





# KING BABY

Guest bathroom en suite



# Waterslide



# Lifestyle



**BURGESS**

Discover the difference.  
burgessyachts.com



## KING BABY

# SPECIFICATION.



Length  
**43.9m (144ft)**



Built  
**2016 (refitted 2020), IAG Yachts, China**



Interior designer  
**Evan Marshall**



Beam  
**9.5m (31.2ft)**



Draft  
**2.4m (7.9ft)**



Gross tonnage  
**497**



Cruising speed  
**12 knots**



Maximum speed  
**15 knots**



Fuel consumption at cruising speed  
**385 litres per hour**



Engines  
**2 x 2,600hp MTU**



Guests  
**10**



No. of guest cabins  
**5 (4 x double, 1 x twin)**



Crew  
**9**

[View yacht on website](#)

[Watch yacht video](#)



KING BABY

# TENDERS & TOYS



1 x Towed tender



1 x Tender



1 x Deck jacuzzi



2 x Waverunners



2 x SeaBobs



1 x Flyboard



2 x eFoils



2 x Kayaks



2 x Stand up paddleboards



Wakeboard



Kneeboard



Waterskis



Waterslide



Inflatable toys



Snorkelling gear



Fishing gear

KING BABY

# FITNESS & WELLNESS



Free weights



Resistance bands

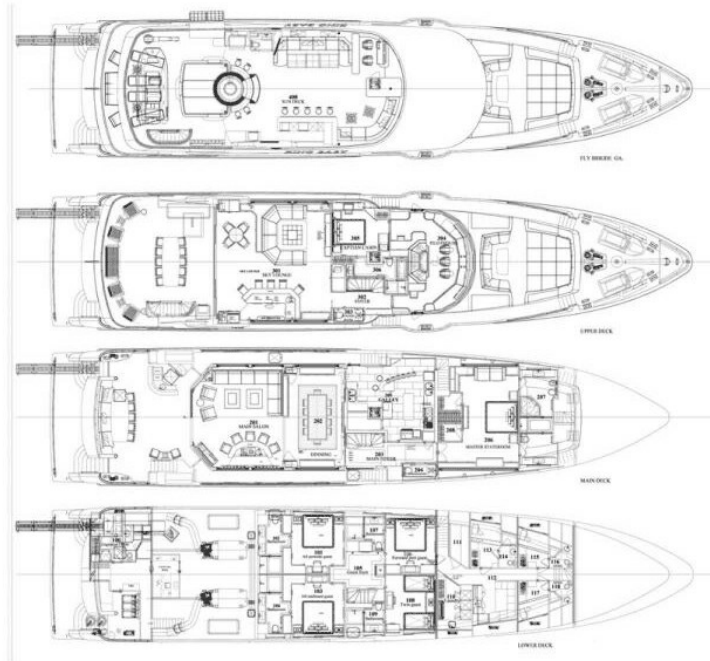


Yoga mats



# KING BABY

Deck plans



# BURGESS

# WORLD CLASS. WORLD WIDE.

<b>London</b> +44 20 7766 4300	<b>Monaco</b> +377 97 97 81 21	<b>New York</b> +1 212 223 0410	<b>Miami</b> +1 305 672 0150	<b>Singapore</b> +65 9665 8990	<b>Beverly Hills</b> +1 310 424 5112	<b>Palma</b> +34 971 495 413	<b>Athens</b> +30 210 967 1661
<b>Dubai</b> +971 4 425 5874	<b>Phuket</b> +66 7623 9739	<b>Hong Kong</b> +852 6496 2094	<b>Tokyo</b> +81 46 738 8612	<b>Sydney</b> +61 499 945 557	<b>Mumbai</b> +91 98211 67253	<b>Shanghai</b> +86 187 0898 6800	<b>Rio de Janeiro</b> +55 21 2553-3238
<b>Aspen</b> +1 970 710 2294							

Advertising of these vessel(s) in printed publications, on the internet or in any other medium is not permitted without prior written permission from Burgess. All particulars are given in good faith and are believed correct but they cannot be guaranteed.

Last updated: 07 March 2025