

KATHARINE



KATHARINE

APERÇU.

Supremely spacious, KATHARINE has huge guest areas, a beautifully equipped sun deck and plentiful options for al fresco dining.

A traditional gentleman's style yacht with a canoe stern, KATHARINE is classically furnished, with a choice of spectacular entertaining areas both inside and on deck. Make the most of the outdoors with a leisurely breakfast on the sun deck, an al fresco lunch on the upper deck aft or pre-dinner cocktails on the main deck's stylish seating. Take a dip in the oversized mosaic-lined jacuzzi on the sun deck, then toast on the soft cushions that surround the jacuzzi/hot tub on three sides. Bask on a sun lounger or read a book on the sofas, while enjoying sensational views in every direction.

KATHARINE's interior is equally impressive. The vast 80 sqm sky lounge is panelled in cherry wood and features a fireplace and two banks of deep, comfortable sofas. A separate dining room on the upper deck features a beautiful oblong table and floor-to-ceiling glass doors that cast plenty of natural light and lead out onto the aft deck.

The sense of warmth and grandeur continues on the main deck, with a sophisticated bar, rich fabrics and intricate detailing in the main salon. All six of the guest cabins are located on this deck, providing luxurious accommodation for 12 guests. Relax in the impressive, full beam master suite, with its romantic window seat and huge lounge area. His and hers bathrooms, his and hers walk-in wardrobes and a separate study/library ensure there is infinite space and ultimate privacy at all times. The VIP suite also has its own seating area, desk and walk-in wardrobe, while a further three double cabins and a twin all have large windows and en suite bathrooms.

This luxury yacht is also fully equipped with a tender and a wide range of watertoys offering every opportunity to enjoy life on the water.

Principales caractéristiques

Beach club and swim platform

Exercise equipment

12m (39ft) Intrepid Panacea 407 towed tender

Jacuzzi on the sun deck

Zero speed stabilisers to reduce any rolling motion while at anchor

KATHARINE

Cruising



At anchor



Sun deck



Sun deck



KATHARINE

Sun deck



Sun deck



Sun deck dining



Upper deck aft dining



KATHARINE

Upper deck aft dining



Main deck aft



Main deck aft



Main deck lounge



KATHARINE

Main deck lounge



Main deck bar



Foyer



Upper deck lounge



KATHARINE

Upper deck lounge



Upper deck dining



Upper deck dining



Upper deck dining



BURGESS

Discover the difference.
burgessyachts.com



KATHARINE

Main deck master cabin



Main deck master cabin



Her master bathroom en suite



Her master bathroom en suite



KATHARINE

His master bathroom en suite



Main deck master office



Main deck VIP cabin



Main deck double cabin



KATHARINE

Main deck double cabin



Main deck twin cabin



Guest bathroom en suite



Swim platform



KATHARINE

Beach club



Lifestyle



Beach set-up masseuse



Beach set-up



BURGESS

Discover the difference.
burgessyachts.com



KATHARINE

Lifestyle



Beach set-up



Lifestyle



Intrepid Panacea 407 towed tender



BURGESS

Discover the difference.
burgessyachts.com



KATHARINE

Custom Gemini tender



KATHARINE

SPECIFICATIONS.



Longueur
61,3m



Chantier
2000 (refitted 2017), CRN Ancona, Italy



Designer d'intérieur
Zuretti Design



Largeur
11m



Tirant d'eau
3,5m



Tonnage brut
1 049



Vitesse de croisière
12 knots



Vitesse maximale
14 knots



Consommation de carburant en vitesse de croisière
350 litres par heure



Moteurs
2 x 2 000hp Caterpillar



Invités
12



Nb de cabines invités
6 (5 x double, 1 x twin)



Équipage
16

[Voir le yacht sur le site](#)
[Regarder la vidéo du yacht](#)



KATHARINE

ANNEXES & JEUX NAUTIQUES



1 × Towed tender



1 × Tender



1 × Sailing dinghy



1 × Deck jacuzzi



2 × Waverunners



2 × SeaBobs



1 × eFoil



3 × Stand up paddleboards



Wakeboard



Waterskis



Waterslide



Inflatable toys



Scuba diving equipment



Snorkelling gear



Fishing gear



RYA training centre for jetskis
& waverunners

12m (39ft) Intrepid Panacea 407 tender | 6.5m (22ft) Custom Gemini RIB with 1x 150hp engine | 2x Yamaha waverunners | 2x SeaBobs | Fliteboard electric hydrofoil | Pico Uno Sailing Dinghy | 3x Stand up paddle boards | Custom Inflatable Slide | Wakefoil | Wakeboards, waterskis and toys | Snorkeling gear for 12 | Scuba diving gear for 6 | Fishing gear | Approved RYA training centre for personal watercraft

KATHARINE

REMISE EN FORME & BIEN-ETRE



Free weights



Treadmill

Life fitness treadmill | PowerBlock Sport weights & Stand | Various weights, adjustable dumbbells - suitable for both Male/Females



KATHARINE

COMMUNICATION ET DIVERTISSEMENT



Satcom & cellular communications facilities



Wi-Fi internet access



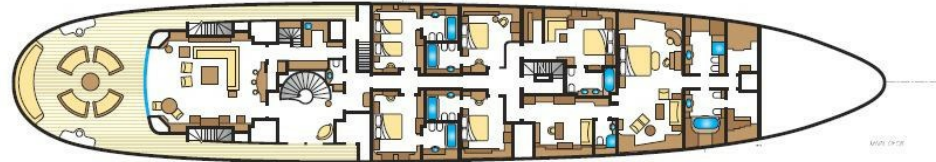
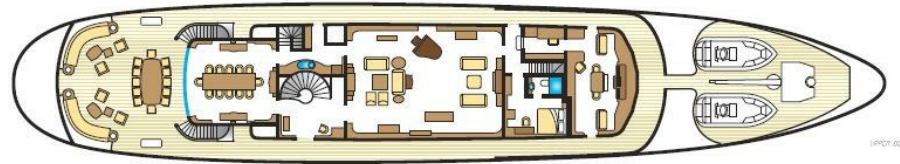
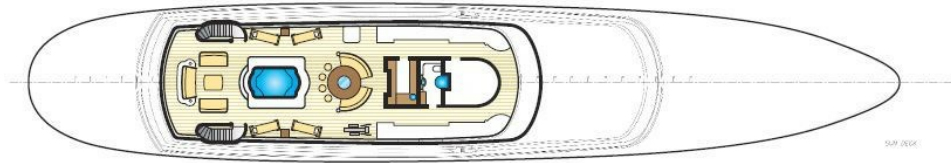
Starlink



Piano

VOIP | GSM & Iridium phone services | High speed STARLINK internet up to up to 300 Mbits backed up with VSAT internet 6Mbits/s (2MB/its guaranteed) access via WiFi throughout the yacht | Self playing baby-grand piano | Audio Visual systems including 4K televisions and movies in the lounges | Kaleidescape movie & music server (with over 320 movies) controlled via an iPad/iPod based Crestron system throughout the yacht | Airplay





BURGESS

WORLD CLASS. WORLD WIDE.

London +44 20 7766 4300	Monaco +377 97 97 81 21	New York +1 212 223 0410	Miami +1 305 672 0150	Singapore +65 9665 8990	Beverly Hills +1 310 424 5112	Palma +34 971 495 413	Athens +30 210 967 1661
Dubai +971 4 425 5874	Phuket +66 7623 9739	Hong Kong +852 6496 2094	Tokyo +81 46 738 8612	Sydney +61 499 945 557	Mumbai +91 98211 67253	Shanghai +86 187 0898 6800	Rio de Janeiro +55 21 2553-3238
Aspen +1 970 710 2294							

La publicité de ce(s) navire(s) dans des publications imprimées, sur Internet ou sur tout autre support n'est pas autorisée sans l'autorisation écrite préalable de Burgess.
Toutes les informations sont données de bonne foi et sont considérées comme exactes, mais elles ne peuvent être garanties.

Dernière mise à jour : 06 mars 2025