

# KATHARINE

---



KATHARINE

# OVERVIEW.

Supremely spacious, KATHARINE has huge guest areas, a beautifully equipped sun deck and plentiful options for al fresco dining.

A traditional gentleman's style yacht with a canoe stern, KATHARINE is classically furnished, with a choice of spectacular entertaining areas both inside and on deck. Make the most of the outdoors with a leisurely breakfast on the sun deck, an al fresco lunch on the upper deck aft or pre-dinner cocktails on the main deck's stylish seating. Take a dip in the oversized mosaic-lined jacuzzi on the sun deck, then toast on the soft cushions that surround the jacuzzi/hot tub on three sides. Bask on a sun lounger or read a book on the sofas, while enjoying sensational views in every direction.

KATHARINE's interior is equally impressive. The vast 80 sqm sky lounge is panelled in cherry wood and features a fireplace and two banks of deep, comfortable sofas. A separate dining room on the upper deck features a beautiful oblong table and floor-to-ceiling glass doors that cast plenty of natural light and lead out onto the aft deck.

The sense of warmth and grandeur continues on the main deck, with a sophisticated bar, rich fabrics and intricate detailing in the main salon. All six of the guest cabins are located on this deck, providing luxurious accommodation for 12 guests. Relax in the impressive, full beam master suite, with its romantic window seat and huge lounge area. His and hers bathrooms, his and hers walk-in wardrobes and a separate study/library ensure there is infinite space and ultimate privacy at all times. The VIP suite also has its own seating area, desk and walk-in wardrobe, while a further three double cabins and a twin all have large windows and en suite bathrooms.

This luxury yacht is also fully equipped with a tender and a wide range of watertoys offering every opportunity to enjoy life on the water.

## Key features

---

**Beach club and swim platform**

---

**Exercise equipment**

---

**13.1m Hinckley Talaria 43 chase tender (available for summer Mediterranean charters)**

---

**Jacuzzi on the sun deck**

---

**Zero speed stabilisers to reduce any rolling motion while at anchor**

---



KATHARINE

Sun deck



Sun deck



Sun deck dining



Upper deck aft dining area





KATHARINE

Main deck aft



Main deck aft



Main deck lounge



Main deck lounge bar





KATHARINE

Cocktails



Swim platform



Upper deck lounge



Upper deck lounge



BURGESS

Discover the difference.  
burgessyachts.com





# KATHARINE

Main deck master cabin



Main deck master cabin



Her master bathroom en suite



His master bathroom en suite





KATHARINE

Master office



Main deck VIP cabin



Main deck twin cabin



Garage



BURGESS

Discover the difference.  
burgessyachts.com





KATHARINE

Beach set-up



Cruising



BURGESS

Discover the difference.  
burgessyachts.com





KATHARINE

# SPECIFICATION.



Length  
61.3m (201.1ft)



Built  
2000 (refitted 2017), CRN Ancona, Italy



Interior designer  
Zuretti



Beam  
11m (36.1ft)



Draft  
3.5m (11.5ft)



Gross tonnage  
1,049



Cruising speed  
12 knots



Maximum speed  
14 knots



Fuel consumption at cruising speed  
350 litres per hour



Engines  
2 x 2,000hp Caterpillar



Guests  
12



No. of guest cabins  
6 (5 x double, 1 x twin)



Crew  
16

[View yacht on website](#)

[Watch yacht video](#)





# EQUIPMENT.

## Tenders & toys

---



1 x Towed tender



1 x Tender



1 x Sailing dinghy



1 x Deck jacuzzi



Waterslide



RYA training centre for jetskis & waverunners



2 x Waverunners



2 x SeaBobs



1 x eFoil



3 x Stand up paddleboards



Wakeboard



Waterskis



Inflatable toys



Scuba diving equipment



Fishing gear



Snorkelling gear



# Fitness & wellness

---



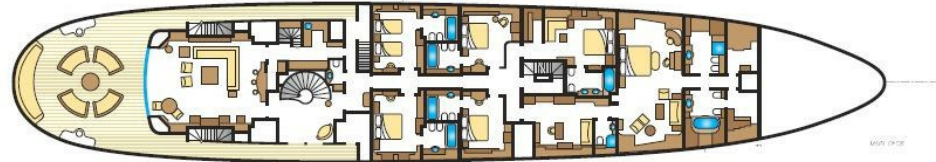
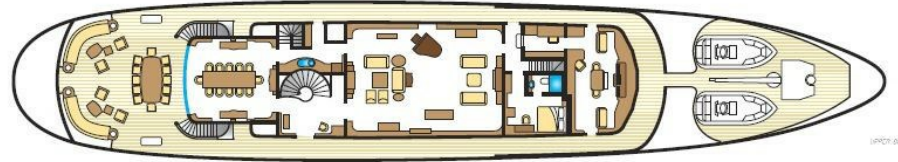
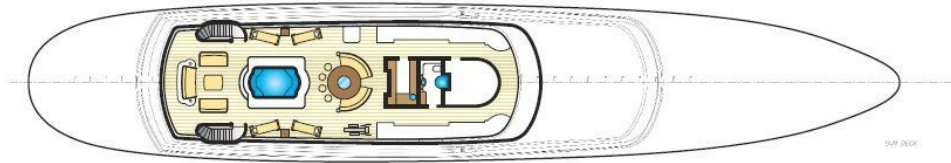
Free weights



Treadmill









# BURGESS

# WORLD CLASS. WORLD WIDE.

London +44 20 7766 4300	Monaco +377 97 97 81 21	New York +1 212 223 0410	Miami +1 305 672 0150	Singapore +65 9665 8990	Beverly Hills +1 310 424 5112	Palma +34 971 495 413	Athens +30 210 967 1661
	Dubai +971 4 425 5874	Phuket +66 7623 9739	Hong Kong +852 6496 2094	Tokyo +81 46 738 8612	Sydney +61 499 945 557	Mumbai +91 98211 67253	

---

Advertising of these vessel(s) in printed publications, on the internet or in any other medium is not permitted without prior written permission from Burgess. All particulars are given in good faith and are believed correct but they cannot be guaranteed.

Last updated: 29 February 2024