

KAMAKASA



KAMAKASA

SPECIFICATION.



Asking price
USD 23,750,000



Built
2020, Sanlorenzo, Italy



Length
44.5m (146ft)



Beam
9m (29.5ft)



Draft
2.3m (7.5ft)



Gross tonnage
483



Cruising speed
18 knots



Maximum speed
21 knots



Range
945 nm



Flag
Cayman Islands



Lying
USA



Class
**American Bureau of Shipping (ABS), ✱ A1,
Commercial Yachting Service, (✱)AMS**



Exterior designer
Zucon International Project



Interior designer
Zucon International Project



Construction
**Hull - Aluminium, Superstructure - Aluminium,
Deck - Teak**



Crew
9



Guests
11



Cabins
5 (4 × double, 1 × twin, 1 × additional berths)



Engines
2 × 2,636hp MTU



Propulsion
Twin screw diesel yacht

Note

Not available for sale to US residents while in US waters.

[View yacht on website](#)



KAMAKASA

Main saloon



Main saloon



Main saloon



Main deck dining



KAMAKASA

Master cabin



Master cabin



Master cabin en suite



Master cabin wardrobe



KAMAKASA

Owner's office



Owner's office



Owner's office



Owner's lounge



KAMAKASA

Owner's lounge



Guest cabin



Guest cabin en suite



Guest cabin



KAMAKASA

Guest cabin



Guest cabin



Sky lounge



Main deck aft



KAMAKASA

Bridge deck aft



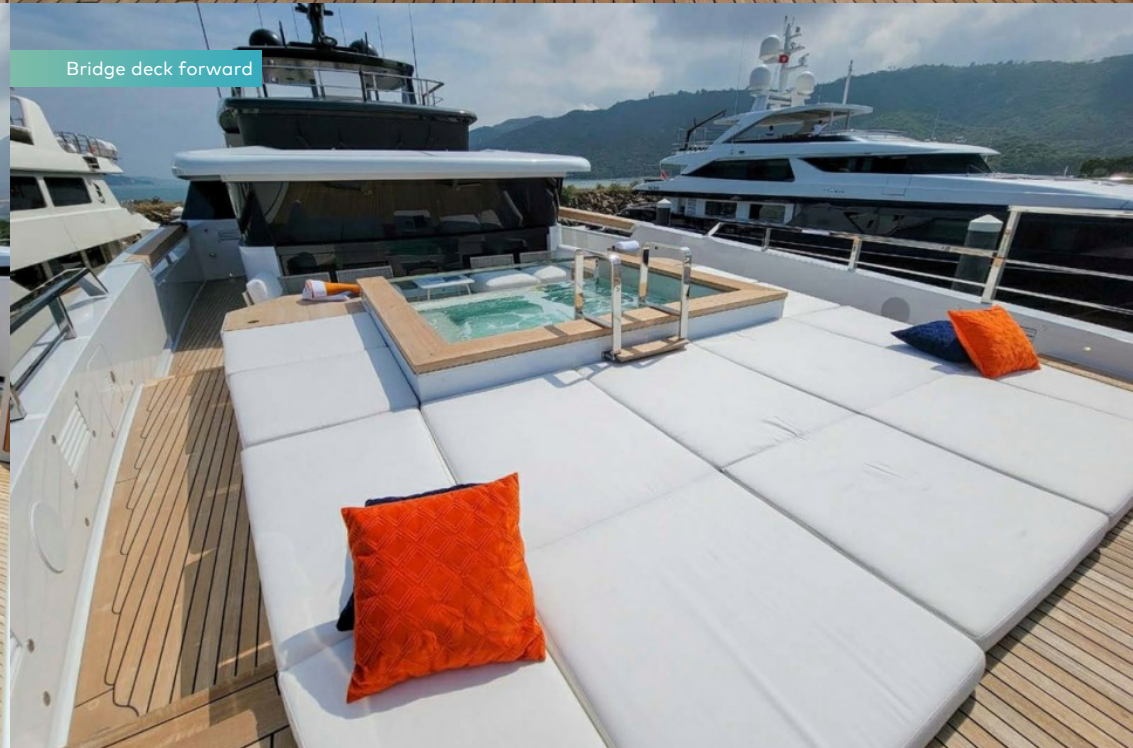
Bridge deck aft dining



Bridge deck forward



Bridge deck forward



KAMAKASA

Bridge deck forward



Bridge deck forward jacuzzi



Sun deck



Sun deck



BURGESS

Discover the difference.
burgessyachts.com



KAMAKASA

Sun deck



Sun deck forward



Sun deck aft



Swim platform



KAMAKASA

Bridge



Bridge



Galley



Cruising



BURGESS

Discover the difference.
burgessyachts.com



OVERVIEW.

The 44.5m (146ft) KAMAKASA is the second hull in the Sanlorenzo 44 Alloy series. She has full aluminium construction and is built to ABS classification with naval architecture by the shipyard. Her contemporary exteriors are by Zuccon International Project and with a beam of 9m she offers 483GT of interior volume showcasing design by Zuccon International Design.

Considerable guest deck spaces include the sun deck with sun lounging aft, a lounge area, dining table, bar and another bank of sunpads forward. On a spacious upper deck aft there is more sunbathing aft and a second open-air dining option on a versatile deck space shaded by the overhang. Sliding glass doors lead into a sky lounge with full-height glass and two banks of sofa seating with a large TV on the forward bulkhead. Glazed bulwarks deliver exceptional views. Walkaround decks lead forward to a private owner's area on the foredeck complete with lounge seating and a jacuzzi nestled among a raft of sunpads.

Lobby stairs lead down to the main lobby with access to the sidedeck and a dayhead. Aft is the formal dining space and there is an open plan lounge aft of that. Full-height sliding glass doors aft and either side combine with glazed bulwarks to bring the outside in. On the main deck aft is a lounge area partially shaded by the upper deck overhang, and a bank of sunpads. Steps lead down to the swim platform and beach club, to which there is also internal access. The teak-decked beach club is a multipurpose space that features a bar, lounge and gym and the space is open on three sides with a swim platform aft and sea terraces port and starboard. The space is also a tender and toy garage, launching to starboard on horizontal davits.

She welcomes 11 guests in five cabins. The owner's suite is split level. From the main lobby a door opens into a private study and steps lead up to the owner's lounge and down into the bedroom suite. The full-beam owner's suite has a his-and-hers bathroom forward and a walk-in wardrobe. The lounge has a drop-down TV and exceptional views across the owner's foredeck jacuzzi and seating area, to which there is also private access. On the lower deck are three double suites and one twin suite with an additional berth.

As well as the main tender in the beach club, there is tender and toy stowage behind a main deck shell door to port. Twin 2,636hp MTU diesel engines give her a top speed of 21 knots, she cruises at 18 knots and has a maximum range of 2,000nm. Zero speed stabilisers ensure comfort at anchor on arrival.

Key features

Exceptional three-level full beam owner's suite with private owners mezzanine and forward views

Private owner's bridge deck forward jacuzzi

Beach club with gym and folding sea terraces

Spacious outside lounge and dining areas

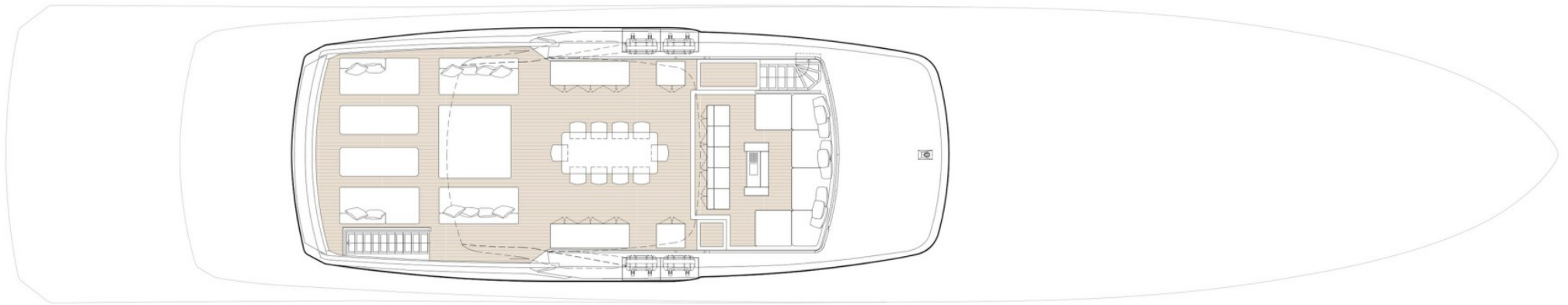
Sleeps 11 guests in 5 elegantly appointed cabins

Garage space for 7 metre tender

Tenders

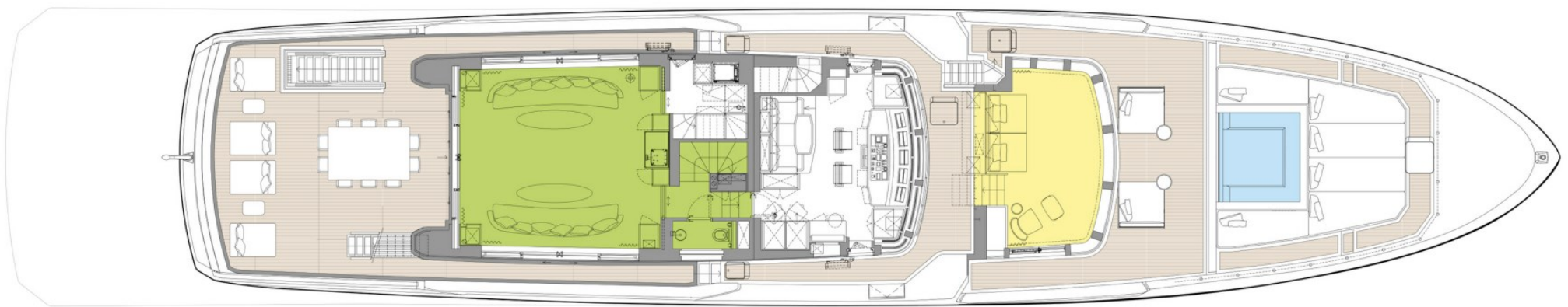
Williams Dieseljet 625 (194kw), Williams Sportjet 325 (66kw)

SUN DECK



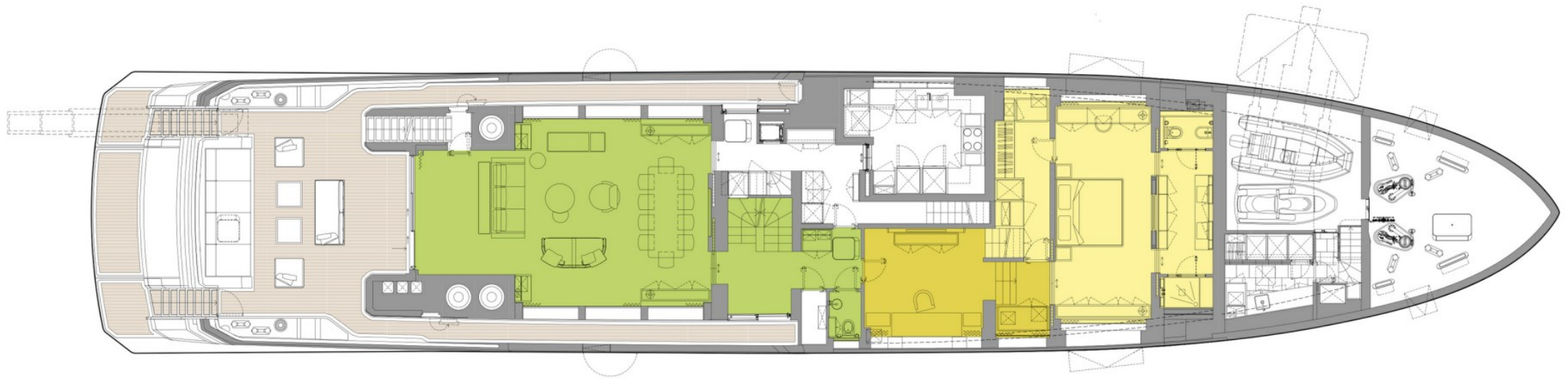
GUEST AREAS MASTER SUITE VIP SUITE GUEST CABINS MASTER SUITE OFFICE POOL

UPPER DECK



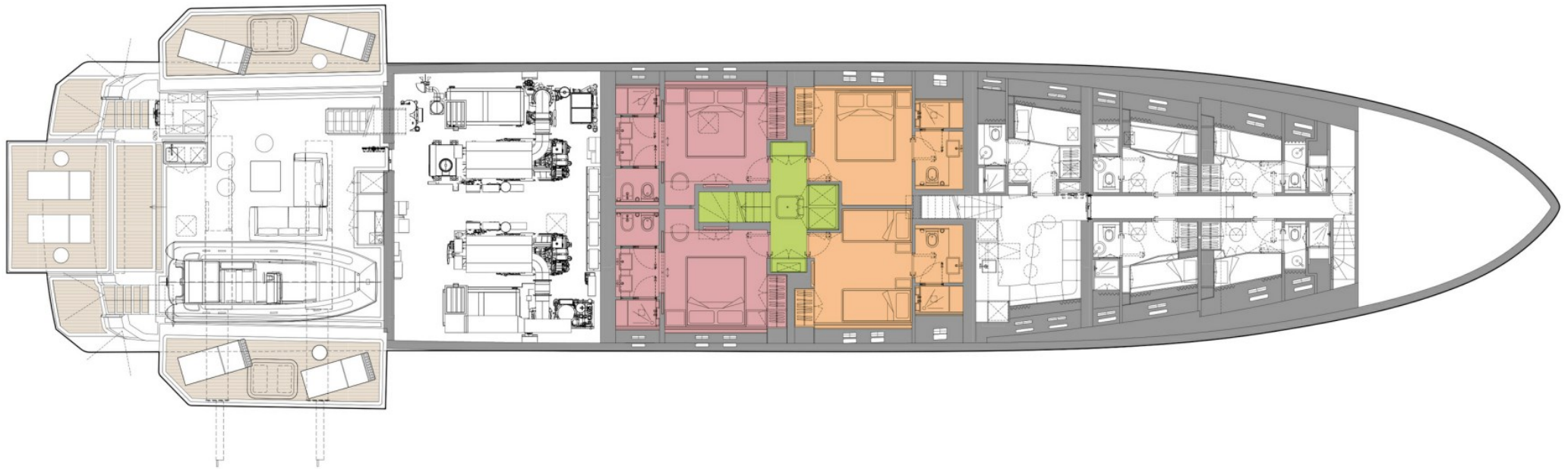
■ GUEST AREAS ■ MASTER SUITE ■ VIP SUITE ■ GUEST CABINS ■ MASTER SUITE OFFICE ■ POOL

MAIN DECK



■ GUEST AREAS ■ MASTER SUITE ■ VIP SUITE ■ GUEST CABINS ■ MASTER SUITE OFFICE ■ POOL

LOWER DECK



■ GUEST AREAS ■ MASTER SUITE ■ VIP SUITE ■ GUEST CABINS ■ MASTER SUITE OFFICE ■ POOL

BURGESS

WORLD CLASS. WORLD WIDE.

London +44 20 7766 4300	Monaco +377 97 97 81 21	New York +1 212 223 0410	Miami +1 305 672 0150	Singapore +65 9665 8990	Beverly Hills +1 310 424 5112	Palma +34 971 495 413	Athens +30 210 967 1661
	Dubai +971 4 425 5874	Phuket +66 7623 9739	Hong Kong +852 6496 2094	Tokyo +81 46 738 8612	Sydney +61 499 945 557	Mumbai +91 98211 67253	

Advertising of these vessel(s) in printed publications, on the internet or in any other medium is not permitted without prior written permission from Burgess. All particulars are given in good faith and are believed correct but they cannot be guaranteed.

Last updated: 08 March 2024