

# JOYME



JOYME

# APERÇU.

**This is a yacht for the playful and eclectic, lovers of bold colours and modern art. These are both themes that inspire the interiors and are belied by her scarlet, gold and cream hull, instantly marking her out - just like her guests - as proudly different and definitely special.**

As you might expect, her accommodation is a little quirky too. The master suite faces to port on the bridge deck and has its own private lounge with access to a sun lounge on the aft deck that has a hanging chair and modular furniture.

There is also a VIP twin guest suite on the bridge deck with access to a Portuguese bridge lounge and two huge sun pads on the foredeck. The rest of her accommodation, two double suites and two twin suites, is forward on the main deck for convenience, better views, and natural light.

The sun deck is always a great place to be with its large raised jacuzzi surrounded by sun pads forward a bar in the central section and plenty of versatile space elsewhere, including the aft section where the tenders are stowed underway.

Down on the main deck aft there is open-air dining shaded by the overhang and banquette seating aft where you can soak up the sun. Steps either side lead down to the swim platform where the crew will prep her range of watertoys for you. In the beach club there is gym equipment as well as a sauna and hammam with sea views so you can feel the heat while watching the cool, clean ocean.

For an art-filled charter on a yacht that always gets you noticed, JOYME is the perfect choice.

## Principales caractéristiques

---

**Spa facilities: a Finnish sauna and hammam**

---

**Jacuzzi on the sun deck**

---

**Zero speed stabilisers to reduce any rolling motion while at anchor**

---

JOYME

Sun deck



Sun deck jacuzzi



Upper deck aft



Main deck aft



JOYME

Main deck lounge



Main deck dining area



Sky lounge



Sky lounge



BURGESS

Discover the difference.  
burgessyachts.com



JOYME

Upper deck master cabin



Double guest cabin



Main deck double cabin



Twin cabin
















JOYME

Gym



JOYME

# SPECIFICATIONS.

 Longueur <b>49,9m</b>	 Invités <b>12</b>
 Chantier <b>2011, Philip Zepter Yachts, Croatia</b>	 Nb de cabines invités <b>6 (3 × double, 3 × double/twin)</b>
 Designer d'intérieur <b>Marijana Radović</b>	 Équipage <b>11</b>
 Largeur <b>9,1m</b>	
 Tirant d'eau <b>2,6m</b>	
 Tonnage brut <b>620</b>	
 Vitesse de croisière <b>11 knots</b>	
 Vitesse maximale <b>15 knots</b>	
 Consommation de carburant en vitesse de croisière <b>250 litres par heure</b>	
 Moteurs <b>2 × 1100hp Cummins</b>	

[Voir le yacht sur le site](#)



JOYME

# ANNEXES & JEUX NAUTIQUES



1 × Towed tender



1 × Tender



1 × Deck jacuzzi



1 × Waverunner



2 × SeaBobs



2 × Stand up paddleboards



Wakeboard



Waterskis



Inflatable toys



Snorkelling gear



JOYME

# REMISE EN FORME & BIEN-ETRE



Free weights

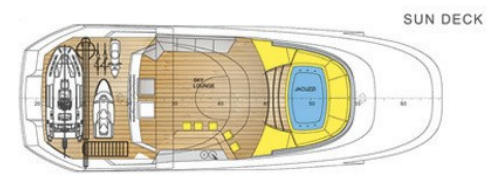
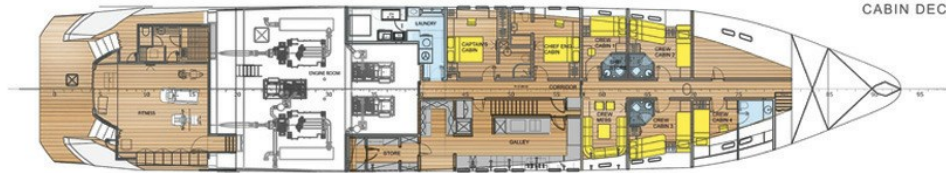
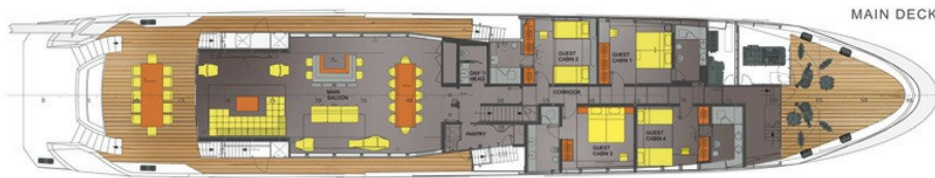
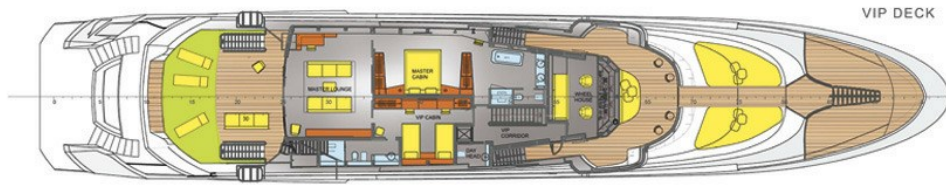


Pedal bike



Sauna





BURGESS

WORLD CLASS.  
WORLD WIDE.

<b>London</b> +44 20 7766 4300	<b>Monaco</b> +377 97 97 81 21	<b>New York</b> +1 212 223 0410	<b>Miami</b> +1 305 672 0150	<b>Singapore</b> +65 9665 8990	<b>Beverly Hills</b> +1 310 424 5112	<b>Palma</b> +34 971 495 413	<b>Athens</b> +30 210 967 1661
<b>Dubai</b> +971 4 425 5874	<b>Phuket</b> +66 7623 9739	<b>Hong Kong</b> +852 6496 2094	<b>Tokyo</b> +81 46 738 8612	<b>Sydney</b> +61 499 945 557	<b>Mumbai</b> +91 98211 67253	<b>Shanghai</b> +86 187 0898 6800	<b>Rio de Janeiro</b> +55 21 2553-3238

La publicité de ce(s) navire(s) dans des publications imprimées, sur Internet ou sur tout autre support n'est pas autorisée sans l'autorisation écrite préalable de Burgess.  
Toutes les informations sont données de bonne foi et sont considérées comme exactes, mais elles ne peuvent être garanties.

Dernière mise à jour : 10 décembre 2024