

JOYME



JOYME

OVERVIEW.

This is a yacht for the playful and eclectic, lovers of bold colours and modern art. These are both themes that inspire the interiors and are belied by her scarlet, gold and cream hull, instantly marking her out - just like her guests - as proudly different and definitely special.

As you might expect, her accommodation is a little quirky too. The master suite faces to port on the bridge deck and has its own private lounge with access to a sun lounge on the aft deck that has a hanging chair and modular furniture.

There is also a VIP twin guest suite on the bridge deck with access to a Portuguese bridge lounge and two huge sun pads on the foredeck. The rest of her accommodation, two double suites and two twin suites, is forward on the main deck for convenience, better views, and natural light.

The sun deck is always a great place to be with its large raised jacuzzi surrounded by sun pads forward a bar in the central section and plenty of versatile space elsewhere, including the aft section where the tenders are stowed underway.

Down on the main deck aft there is open-air dining shaded by the overhang and banquette seating aft where you can soak up the sun. Steps either side lead down to the swim platform where the crew will prep her range of watertoys for you. In the beach club there is gym equipment as well as a sauna and hammam with sea views so you can feel the heat while watching the cool, clean ocean.

For an art-filled charter on a yacht that always gets you noticed, JOYME is the perfect choice.

Key features

Spa facilities: a Finnish sauna and hammam

Jacuzzi on the sun deck

Zero speed stabilisers to reduce any rolling motion while at anchor

JOYME

Sun deck



Sun deck jacuzzi



Upper deck aft



Main deck aft



JOYME

Main deck lounge



Main deck dining area



Sky lounge



Sky lounge



JOYME

Upper deck master cabin



Double guest cabin



Main deck double cabin



Twin cabin



JOYME

Gym



JOYME

SPECIFICATION.



Length
49.9m (163.7ft)



Built
2011, Philip Zepter Yachts, Croatia



Interior designer
Marijana Radovic



Beam
9.1m (29.8ft)



Draft
2.6m (8.5ft)



Gross tonnage
620



Cruising speed
11 knots



Maximum speed
15 knots



Fuel consumption at cruising speed
250 litres per hour



Engines
2 x 1,100hp Cummins



Guests
12



No. of guest cabins
6 (3 x double, 3 x double/twin)



Crew
11

[View yacht on website](#)



JOYME

TENDERS & TOYS



1 × Towed tender



1 × Tender



1 × Deck jacuzzi



1 × Waverunner



2 × SeaBobs



2 × Stand up paddleboards



Wakeboard



Waterskis



Inflatable tows



Snorkelling gear

JOYME

FITNESS & WELLNESS



Free weights

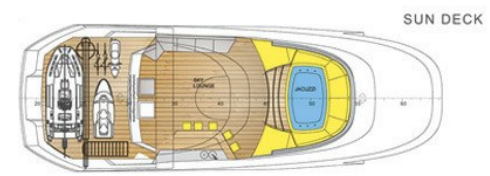
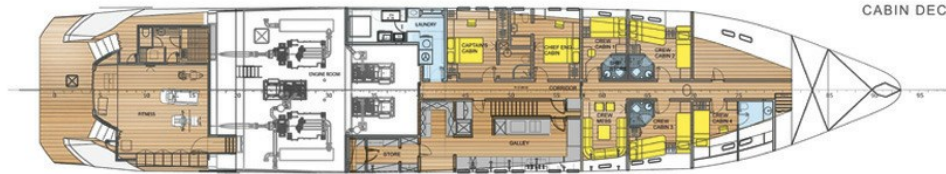
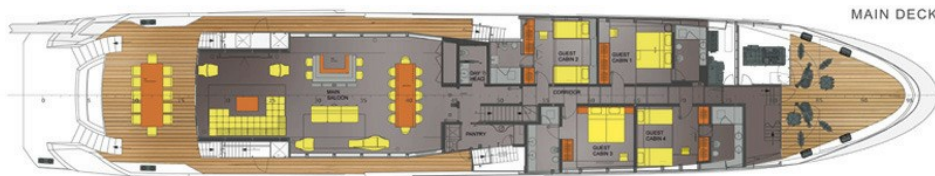
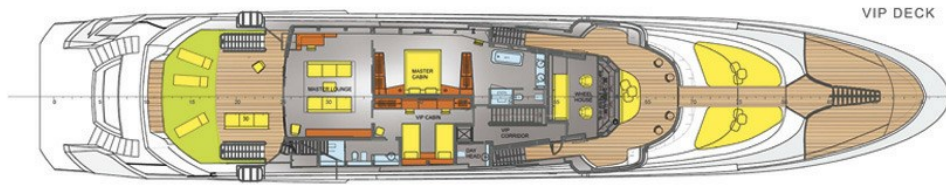


Pedal bike



Sauna





BURGESS

WORLD CLASS. WORLD WIDE.

London +44 20 7766 4300	Monaco +377 97 97 81 21	New York +1 212 223 0410	Miami +1 305 672 0150	Singapore +65 9665 8990	Beverly Hills +1 310 424 5112	Palma +34 971 495 413	Athens +30 210 967 1661
Dubai +971 4 425 5874	Phuket +66 7623 9739	Hong Kong +852 6496 2094	Tokyo +81 46 738 8612	Sydney +61 499 945 557	Mumbai +91 98211 67253	Shanghai +86 187 0898 6800	Rio de Janeiro +55 21 2553-3238

Advertising of these vessel(s) in printed publications, on the internet or in any other medium is not permitted without prior written permission from Burgess. All particulars are given in good faith and are believed correct but they cannot be guaranteed.

Last updated: 10 December 2024