

JOY



JOY

APERÇU.

A rare addition to the charter market, JOY is a masterful collaboration of two yachting powerhouses; Bannenberg and Rowell for her exquisite exterior lines and Dutch pedigree yard Feadship realised her. Covering five decks, her expansive outdoor space goes unrivalled and adds to her appeal as a luxury charter yacht. Beautiful concave lines and the artistic use of glass creates perfect harmony between the exterior and interior making her an ideal yacht for summertime cruising. Specifically, pockets of air conditioned indoor/outdoor zones known as 'winter gardens' were created to further enhance this feeling of space.

Inside, Studio Indigo was responsible for her vibrant interior that includes an extremely flexible cabin layout sure to sleep 12 guests comfortably. With eight cabins, an elevator servicing three of the five decks plus an array of facilities dedicated to wellness (expect a large gym, spa room and on board masseuse), JOY has quickly established herself as a popular yacht on the charter scene.

With a highly experienced and talented crew of 19, you can be sure that each and every need will be met and exceeded while on board this prestigious yacht.

Principales caractéristiques

Excellent wellness facilities including a large fully equipped gym with fitness instructor, spa room and on board masseuse

Beach club/disco

Large games deck forward

Carefully selected young and talented crew of 19

Sun deck BBQ and pool

Zero speed stabilisers to reduce any rolling motion while at anchor

JOY

Welcome on board



Main deck lounge



Main deck lounge



Master cabin



BURGESS

Discover the difference.
burgessyachts.com



JOY

Master cabin



Master cabin en suite (his)



Master cabin en suite (her)



Master office



BURGESS

Discover the difference.
burgessyachts.com



JOY

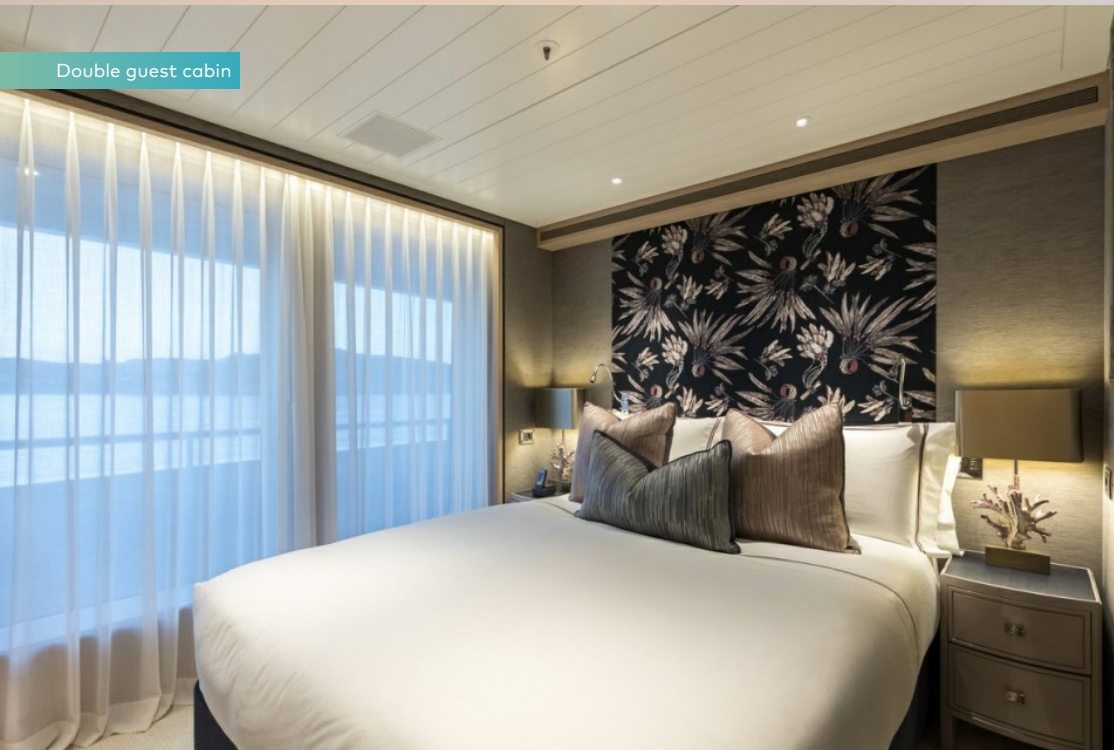
VIP guest cabin



Double guest cabin



Double guest cabin



Guest twin cabin



BURGESS

Discover the difference.
burgessyachts.com



JOY

Main deck aft seating area



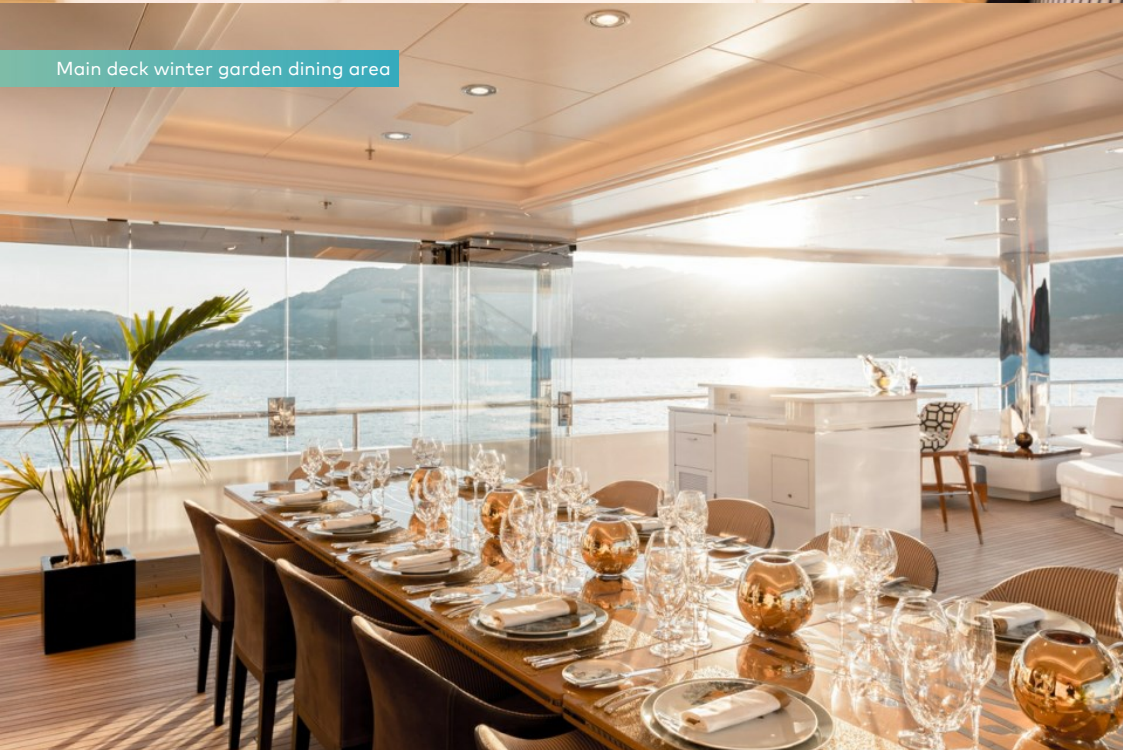
Main deck aft outdoor cinema



Main deck aft



Main deck winter garden dining area



JOY

Owner's deck aft



Owner's deck aft dining



Owner's deck forward basketball court



Bridge deck aft seating area



BURGESS

Discover the difference.
burgessyachts.com



JOY

Bridge deck gym



Spa



Sun deck



Beach club indoor cinema



BURGESS

Discover the difference.
burgessyachts.com



JOY

Tender ride



Beach set up



Aerial view



BURGESS

Discover the difference.
burgessyachts.com



JOY

SPÉCIFICATIONS.



Longueur
70m



Chantier
2016, Feadship, Royal Van Lent, The Netherlands



Designer d'intérieur
Studio Indigo



Largeur
11,5m



Tirant d'eau
3m



Tonnage brut
1 095



Vitesse de croisière
11,7 knots



Vitesse maximale
16 knots



Consommation de carburant en vitesse de croisière
600 litres par heure



Moteurs
2 x 1 850hp MTU



Invités
12



Nb de cabines invités
7 (6 x double, 1 x twin)



Équipage
19

Note

Fully licensed for charters in Spanish waters.

[Voir le yacht sur le site](#)

[Regarder la vidéo du yacht](#)



Annexes & jeux nautiques



1 x Towed tender



2 x Tenders



Pool



Waterslide



Inflatable platform



RYA training centre for jetskis & waverunners



2 x Waverunners



4 x SeaBobs



1 x Jetsurf



2 x eFoilers



4 x Kayaks



4 x Stand up paddleboards



Wakeboard



Wakesurf



Surfboard



Waterskis



Inflatable toys



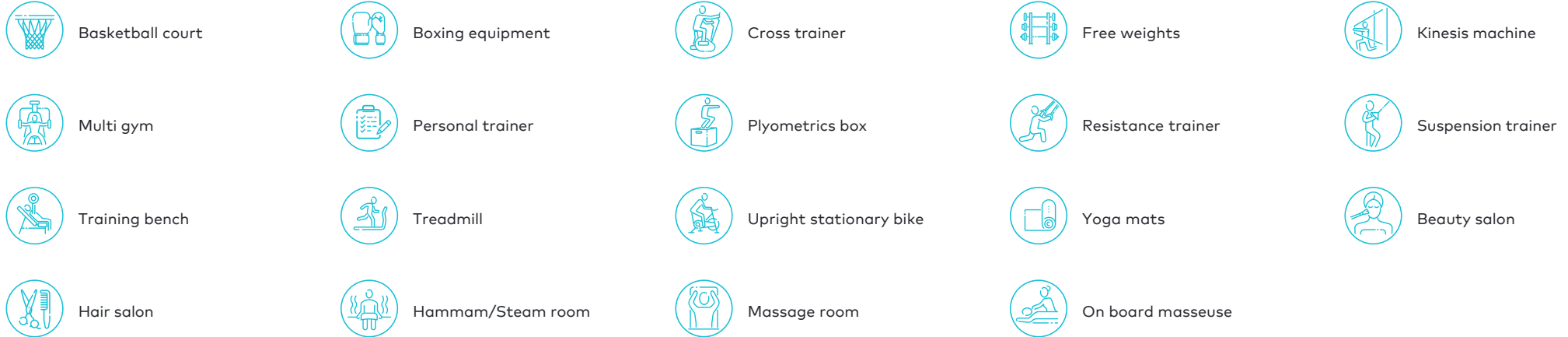
Fishing gear



Snorkelling gear

Tenders: Wajer 38' chase boat 11.3m (16 person) | Ribeye YT 8.1 RIB 7.9m (10 person) | Williams 285 Turbojet RIB 2.9m (3 person) Toys: 2 x Yamaha FX Cruiser 180hp Waverunners | 3 x SeaBob F5 S | 1 x Aquabana inflatable platform | 1 x Freestyle 10m Inflatable Slide (bridge-deck height) | 4 x Jobe Aero inflatable SUP Adult | 2 x Jobe Aero inflatable SUP Child | 2 x Aquaglide inflatable kayak 2 person | 2 x Aquaglide inflatable kayak 1 person | 2 x Jobe 1 person towable inflatable donut | 1 x Jobe 3 person towable inflatable biscuit | 1 x Jobe 6 person towable inflatable banana | 1 x Jobe 3 person towable inflatable sofa | 1 x towable wake surf | 1 x wakeboard | 1 x adult waterskis | 1 x child waterskis | 1 x Radinn electric surfboard | 1 x Fliteboard eFoil board | Snorkelling gear | Fishing gear | Basketball hoop | Badminton net

Remise en forme & bien-être



A professional level gym is located on the Bridge Deck Aft and comes with the following technical equipment: 1 x Peloton | 1 x Technogym treadmill | 1 x Technogym leg curl machine | 1 x Stairmaster | 1 x Kinesis exercise machine | 1 x Multi station gym | 1 x Olympic squat rack with full set of Olympic bars & weights | 1 x full set of Dumbbells ranging from 4kg – 20kg | 1 x incline/decline bench | 1 x punch bag (which can be used with the PT-boxing coach) | Medicine balls - 1kg-5kg | Kettle bells 8-12-16kg | TRX. The gym is one of the best in the industry, with it being high up on the bridge deck with wide open panoramic views afforded by the borderless winter garden windows. The glass can also consertina to the sides to provide an extended outdoor area; very popular with previous charter guests for early morning training. It is also worth noting the wide passage ways running down both sides of the owner's deck to the forward games deck, making it ideal for circuit running. Wellness facilities, including on board masseuse/beautician and spa, offering a range of exceptional treatments. Please enquire for the full menu.

Communication et divertissement

State-of-the-art audio visual system | Sky TV | Satellite TV | Kaleidescape system | Satcom & cellular communications facilities | VOIP, VSAT, Wi-Fi internet access. Other games include PlayStation 5 | Karaoke | Beach setup with wide selection of kids toys and large forward games deck with basketball, soccer, pickle ball, badminton and volleyball.

BURGESS

WORLD CLASS. WORLD WIDE.

London +44 20 7766 4300	Monaco +377 97 97 81 21	New York +1 212 223 0410	Miami +1 305 672 0150	Singapore +65 9665 8990	Beverly Hills +1 310 424 5112	Palma +34 971 495 413	Athens +30 210 967 1661
	Dubai +971 4 425 5874	Phuket +66 7623 9739	Hong Kong +852 6496 2094	Tokyo +81 46 738 8612	Sydney +61 499 945 557	Mumbai +91 98211 67253	

La publicité de ce(s) navire(s) dans des publications imprimées, sur Internet ou sur tout autre support n'est pas autorisée sans l'autorisation écrite préalable de Burgess.
Toutes les informations sont données de bonne foi et sont considérées comme exactes, mais elles ne peuvent être garanties.

Dernière mise à jour : 09 avril 2024