

# INVICTUS

---



# INVICTUS SPÉCIFICATIONS.



Prix demandé  
USD 94 000 000



Chantier  
2013 (refitted 2020), Delta Marine, United States  
Of America



Longueur  
66m



Largeur  
13,1m



Tirant d'eau  
4m



Tonnage brut  
1 943



Vitesse de croisière  
13,5 knots



Vitesse maximale  
16 knots



Autonomie  
5 000 nm



Pavillon  
Cayman Islands



Position  
Europe



Classe  
Lloyd's Register (LR)



Designer extérieur  
Delta Design Group



Designer d'intérieur  
Johnson, Wen/Mulder & Assoc.



Construction  
Hull - Steel, Superstructure - Composite



Équipage  
18



Invités  
20



Cabines  
9 (7 × double, 2 × twin, 2 × additional berths)



Moteurs  
2 × 2 280hp Caterpillar



Propulsion  
Twin screw diesel yacht

[Voir le yacht sur le site](#)

[Regarder la vidéo du yacht](#)



# INVICTUS

Main deck lounge



Main deck lounge



Owner's deck dining



Master cabin



INVICTUS



Double cabin en suite



Double cabin



Twin cabin



INVICTUS

Cinema



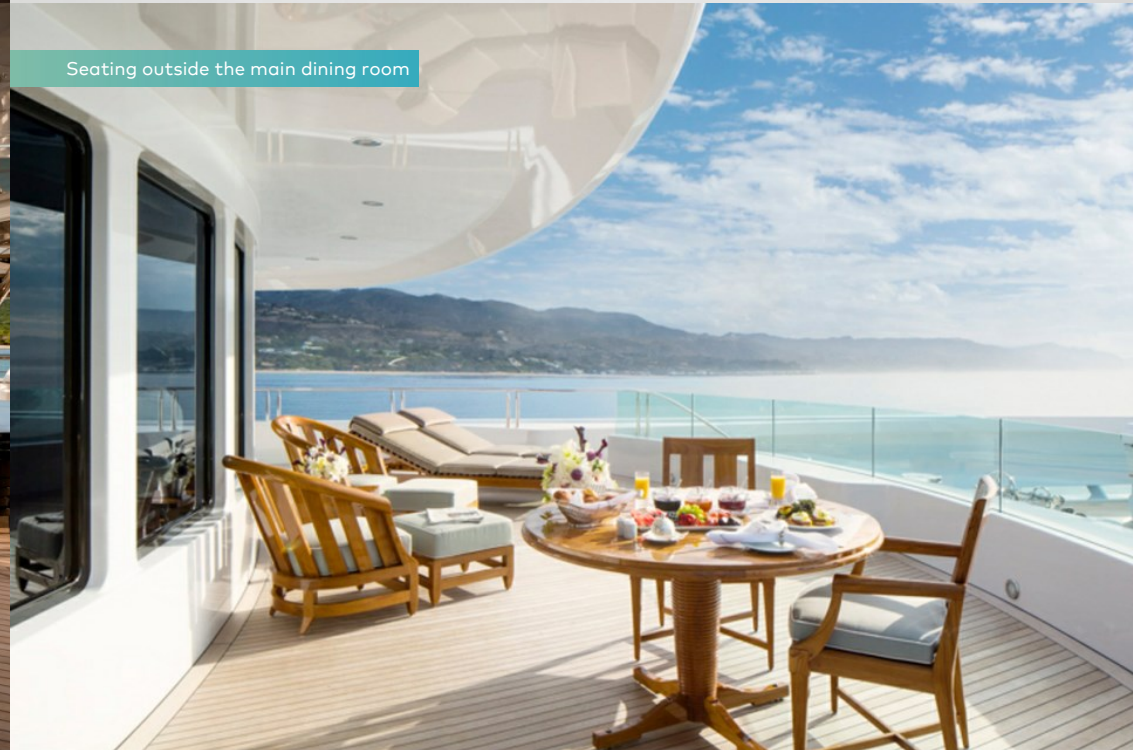
Sun deck



Private owner's deck



Seating outside the main dining room



BURGESS

Discover the difference.  
burgessyachts.com



## INVICTUS

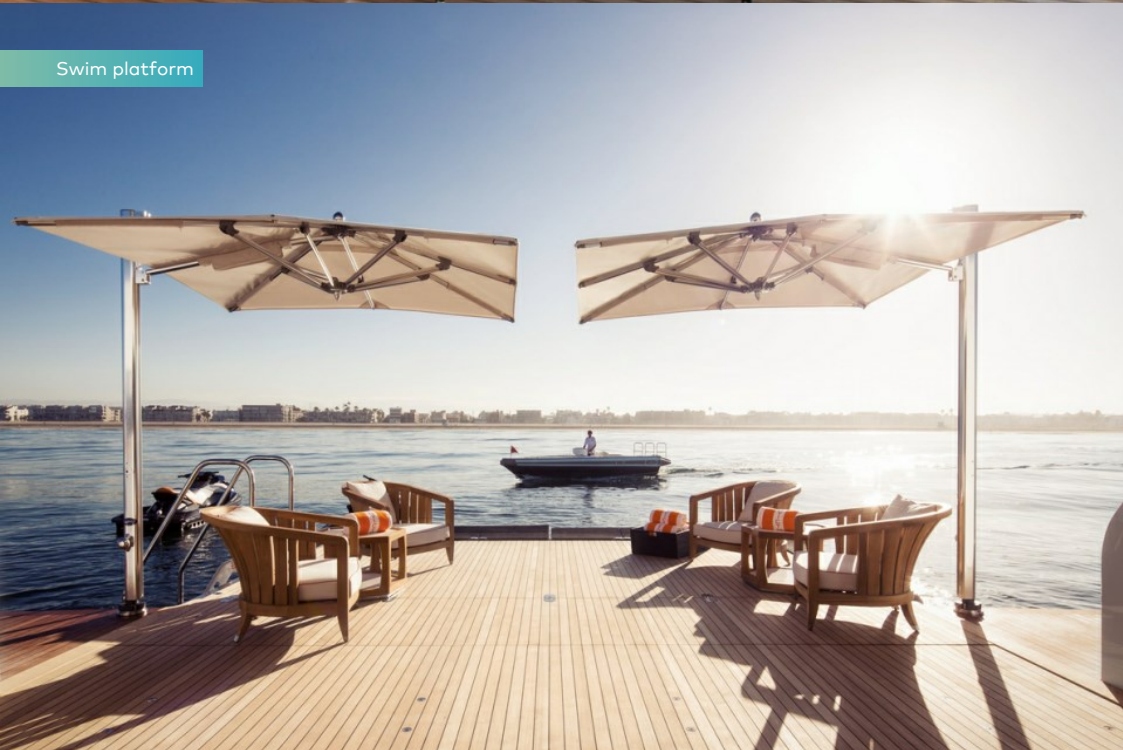
Bridge deck dining



Sun deck jacuzzi



Swim platform



Cruising



Aboard INVICTUS you find superyacht living at its finest with accommodation spread over six decks, offering you incredible inside-outside spaces. Her impressive 1,943GT gives her the internal volume of a 70-80m yacht. Designed and delivered by Delta Yachts in 2013, her interior comes courtesy of the design house Johnson, Wen/Mulder & Associates.

INVICTUS looks after her owner with a separate designated owner's deck that houses a magnificent master suite featuring full-length windows on three sides to show off panoramic views, an office, lounge and a private 'breakfast deck'. Forward is the owner's secluded sunbathing spot.

On board INVICTUS entertainment is key, with a bar on every deck. Sit down to formal dining with 20 guests and enjoy 180-degree sliding glass doors, leading out to wonderful seating areas and a magnificent Lalique bar. When it's time to party the sky lounge converts to a Parisian-style nightclub.

At sea level the transom opens to reveal a beach club and access to the watertoys and tenders. For those wanting a more conventional workout, there is also a fully equipped gym. The full-beam tender garage with port and starboard access is capable of housing two 8.2m (27ft) tenders. INVICTUS is wheelchair accessible and has an elevator linking all interior decks. The high-ceilinged main saloon is filled with light by picture windows flanking the sides of this elegant space. Next door the cinema recreates the full experience with tiered seating for 14 people, reclining armchairs and a huge screen.

On the top deck varied seating arrangements and sunbathing areas create a relaxed lounge around the glass-fronted jacuzzi. Under the hard top is a large sit-up bar for eight people, next to the outdoor dining table. It is no surprise that this yacht has won a raft of awards and recognition from the superyacht fraternity.

INVICTUS has twin-screw diesel engines that turn out an easy cruising speed 13.5 knots and top speed of 16 knots. At anchor the Quantum zero speed stabilisers act to mitigate any roll and discomfort. A successful charter yacht, managed by Burgess, INVICTUS has been well maintained by her original owner, with a complete repaint her most recent refurbishment.

## Principales caractéristiques

---

**Impressive gross tonnage of 1,943**

---

**Accommodation for 20 guests in nine guest cabins**

---

**Designated owners deck with forward facing cabin, study, his and her ensuite bathrooms, and an owners salon aft**

---

**Cinema with raised, stadium seating**

---

**Elevator accessing all interior decks**

---

**Fully equipped gym**

---

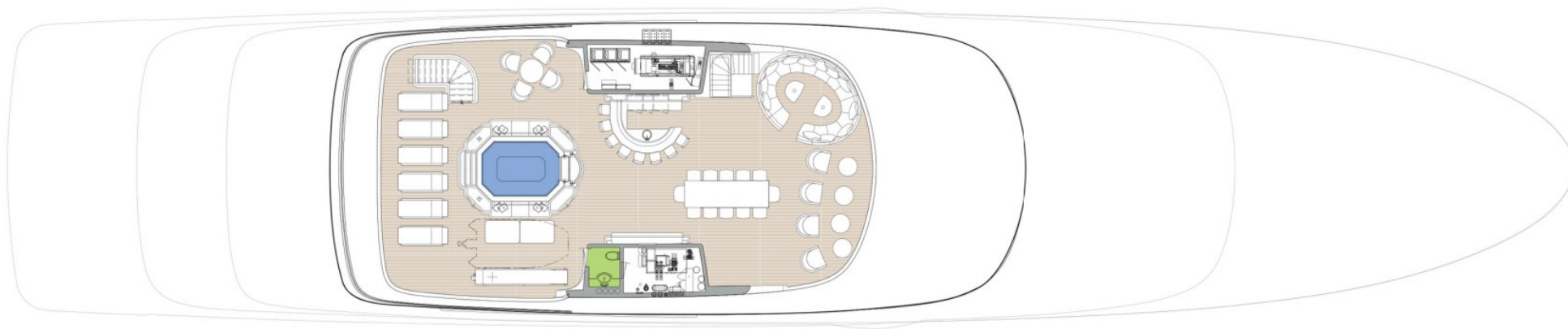
**Full beam tender garage with port and starboard access, capable of housing two 8.2m (27ft) tenders, four jet skis, and other water sports**

---

**Fold down transom with swim platform and beach club**

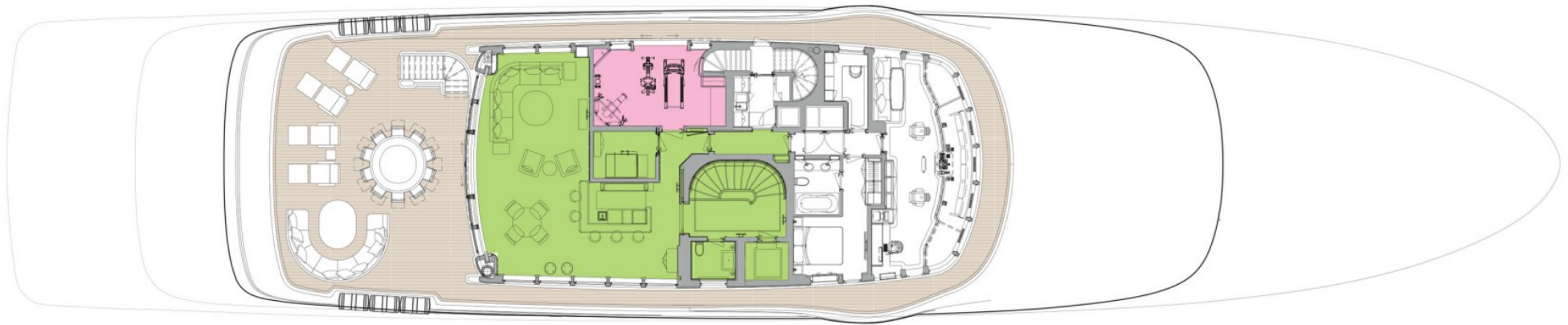
---

# SUN DECK



GUEST AREAS  OWNER'S SUITE  VIP SUITE  GUEST CABINS  OWNER'S OFFICE  CINEMA  GYM  JACUZZI

# BRIDGE DECK



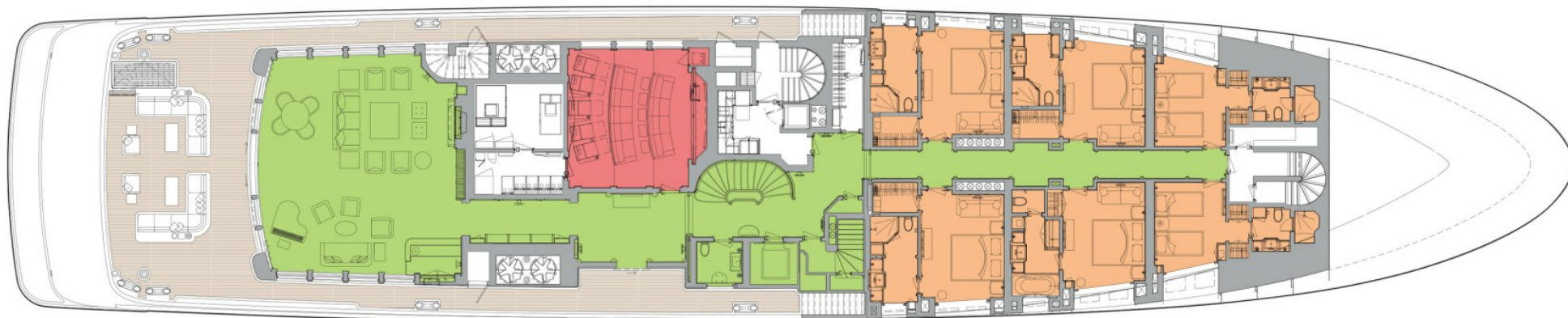
■ GUEST AREAS ■ OWNER'S SUITE ■ VIP SUITE ■ GUEST CABINS ■ OWNER'S OFFICE ■ CINEMA ■ GYM ■ JACUZZI

# OWNER'S DECK



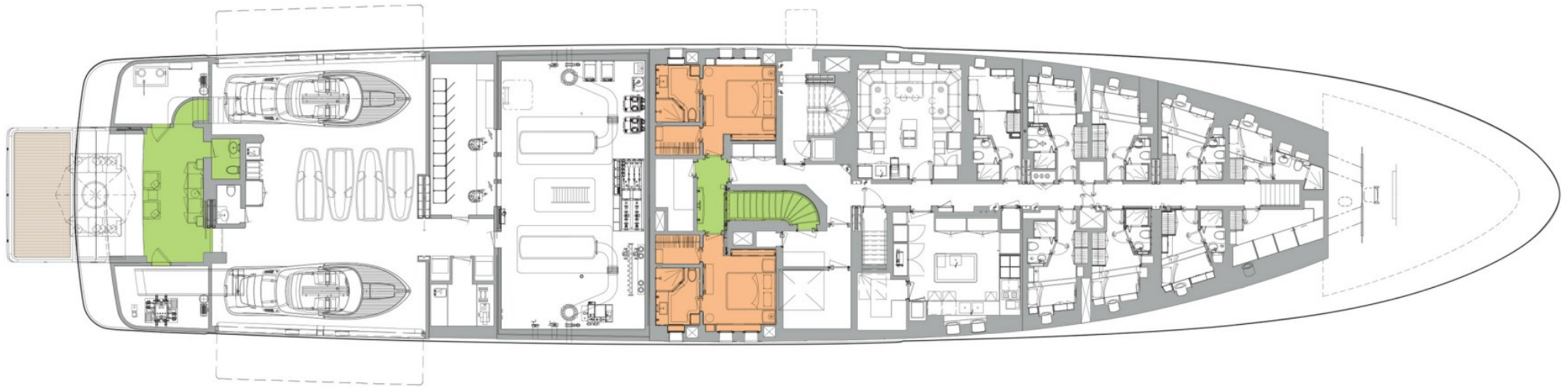
■ GUEST AREAS ■ OWNER'S SUITE ■ VIP SUITE ■ GUEST CABINS ■ OWNER'S OFFICE ■ CINEMA ■ GYM ■ JACUZZI

# MAIN DECK



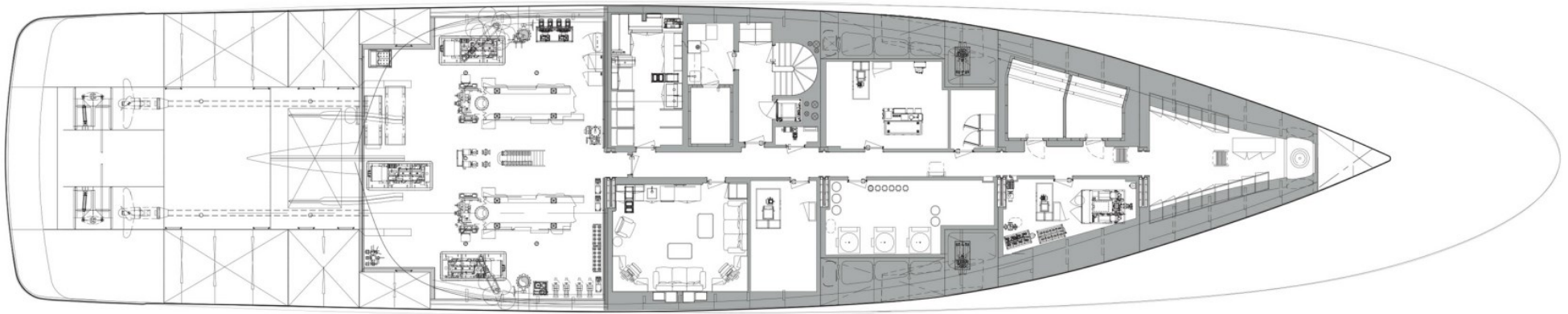
■ GUEST AREAS ■ OWNER'S SUITE ■ VIP SUITE ■ GUEST CABINS ■ OWNER'S OFFICE ■ CINEMA ■ GYM ■ JACUZZI

# LOWER DECK



■ GUEST AREAS ■ OWNER'S SUITE ■ VIP SUITE ■ GUEST CABINS ■ OWNER'S OFFICE ■ CINEMA ■ GYM ■ JACUZZI

# TANK DECK



GUEST AREAS    OWNER'S SUITE    VIP SUITE    GUEST CABINS    OWNER'S OFFICE    CINEMA    GYM    JACUZZI

# BURGESS

# WORLD CLASS. WORLD WIDE.

London +44 20 7766 4300	Monaco +377 97 97 81 21	New York +1 212 223 0410	Miami +1 305 672 0150	Singapore +65 9665 8990	Beverly Hills +1 310 424 5112	Palma +34 971 495 413	Athens +30 210 967 1661
	Dubai +971 4 425 5874	Phuket +66 7623 9739	Hong Kong +852 6496 2094	Tokyo +81 46 738 8612	Sydney +61 499 945 557	Mumbai +91 98211 67253	

La publicité de ce(s) navire(s) dans des publications imprimées, sur Internet ou sur tout autre support n'est pas autorisée sans l'autorisation écrite préalable de Burgess.  
Toutes les informations sont données de bonne foi et sont considérées comme exactes, mais elles ne peuvent être garanties.

Dernière mise à jour : 09 avril 2024