

ILLUSION V



ILLUSION V

OVERVIEW.

This one of a kind Benetti has everything you could possibly need for family fun.

Interior design by Green and Mingarelli is high contrast, contemporary and welcoming, bathed in natural light through large picture windows. Her outside spaces are perfectly designed for relaxation and entertainment and feature a large jacuzzi surrounded by sun pads, versatile space aft, a bar, BBQ and lounge area and climate controlled dining in the middle.

She has a variety of inside and outside spaces for dining, including a lounge and formal dining on the bridge deck aft, indulgences like a wine cellar and a humidor and a popular beach club lounge with bar on the lower deck. This is a great place from which to watch the family racing around on a variety of watertoys.

She welcomes up to 12 guests in six family friendly adaptable suites, three double suites including a main deck master suite and a full beam VIP double suite on the lower deck, along with three twin suites and one additional berth.

Key features

Recently refitted

Beach Club at sea level

Exercise equipment

PADI Dive instructor, beauty therapist, and masseuse on board

Jacuzzi on the sun deck

Zero speed stabilisers to reduce any rolling motion while at anchor

ILLUSION V

Cruising



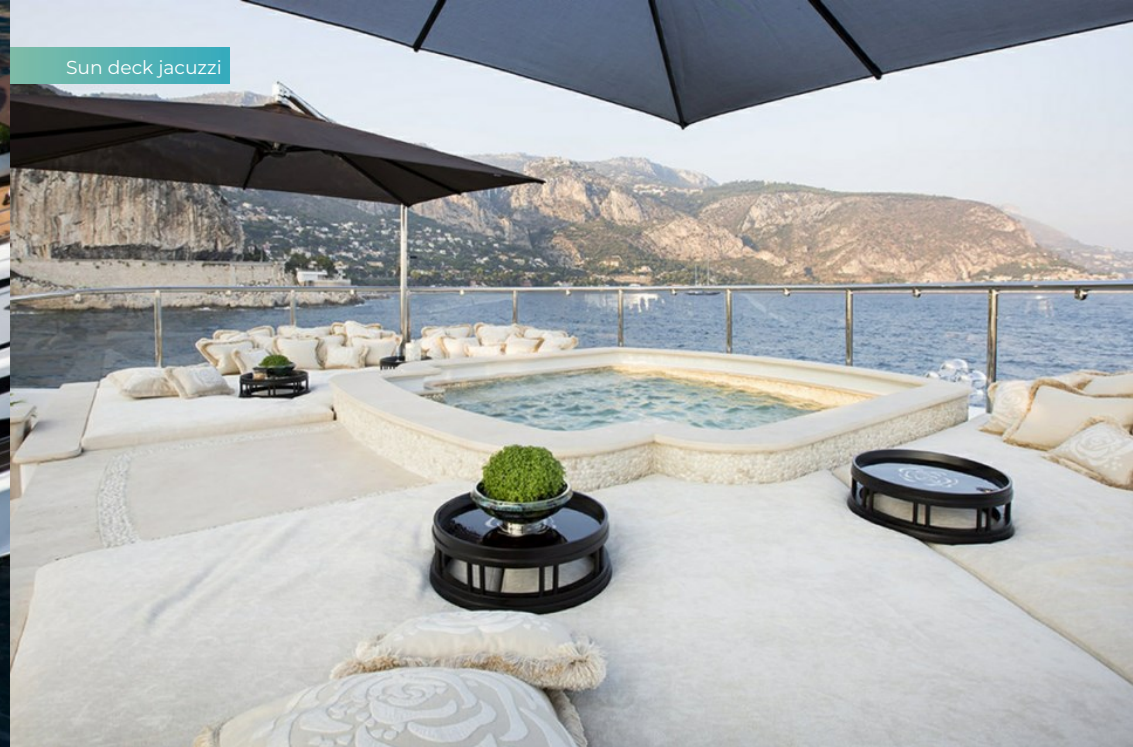
Waterslide



Aerial view



Sun deck jacuzzi



ILLUSION V

Sun deck



Sun deck bar and jacuzzi



Sun deck



Sun deck



ILLUSION V

Upper deck aft



Upper deck aft dining



Upper deck aft dining



Main deck aft



ILLUSION V

Main deck aft



Beach club



Main deck lounge



Main deck lounge



ILLUSION V

Main deck bar



Sky lounge



Sky lounge



Upper deck dining area



ILLUSION V

Master lounge



Main deck master cabin



Master bathroom en suite



Lower deck VIP cabin



ILLUSION V

VIP bathroom en suite



Lower deck double cabin



Lower deck twin cabin



Upper deck cinema



ILLUSION V

Toys

ILLUSION V



BURGESS

Discover the difference.
burgessyachts.com



ILLUSION V

SPECIFICATION.



Length
58m (190.2ft)



Built
2014 (refitted 2023), Benetti, Italy



Interior designer
Benetti



Beam
10.8m (35.4ft)



Draft
3.6m (11.8ft)



Gross tonnage
950



Cruising speed
12 knots



Maximum speed
15 knots



Fuel consumption at cruising speed
325 litres per hour



Engines
2 x 1,850hp Caterpillar



Guests
12



No. of guest cabins
6 (3 x double, 3 x twin)



Crew
14

[View yacht on website](#)

[Watch yacht video](#)



ILLUSION V

TENDERS & TOYS



2 × Tenders



1 × Deck jacuzzi



Waterslide



Climbing wall



Aquapark



Inflatable platform



2 × Waverunners



3 × SeaBobs



1 × Jetsurf



2 × Kayaks



2 × Stand up paddleboards



Wakeboard



Waterskis



Inflatable tows



Scuba diving equipment



Fishing gear



Snorkelling gear

ILLUSION V

FITNESS & WELLNESS



Cross trainer



Free weights



Jump ropes



Upright stationary bike

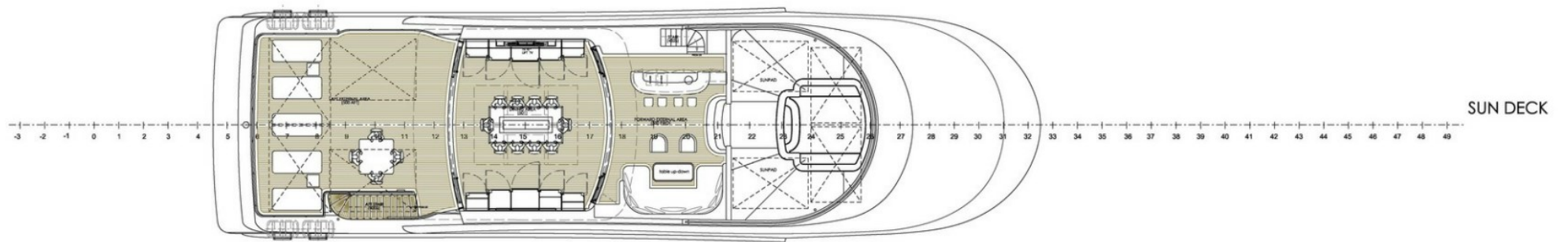
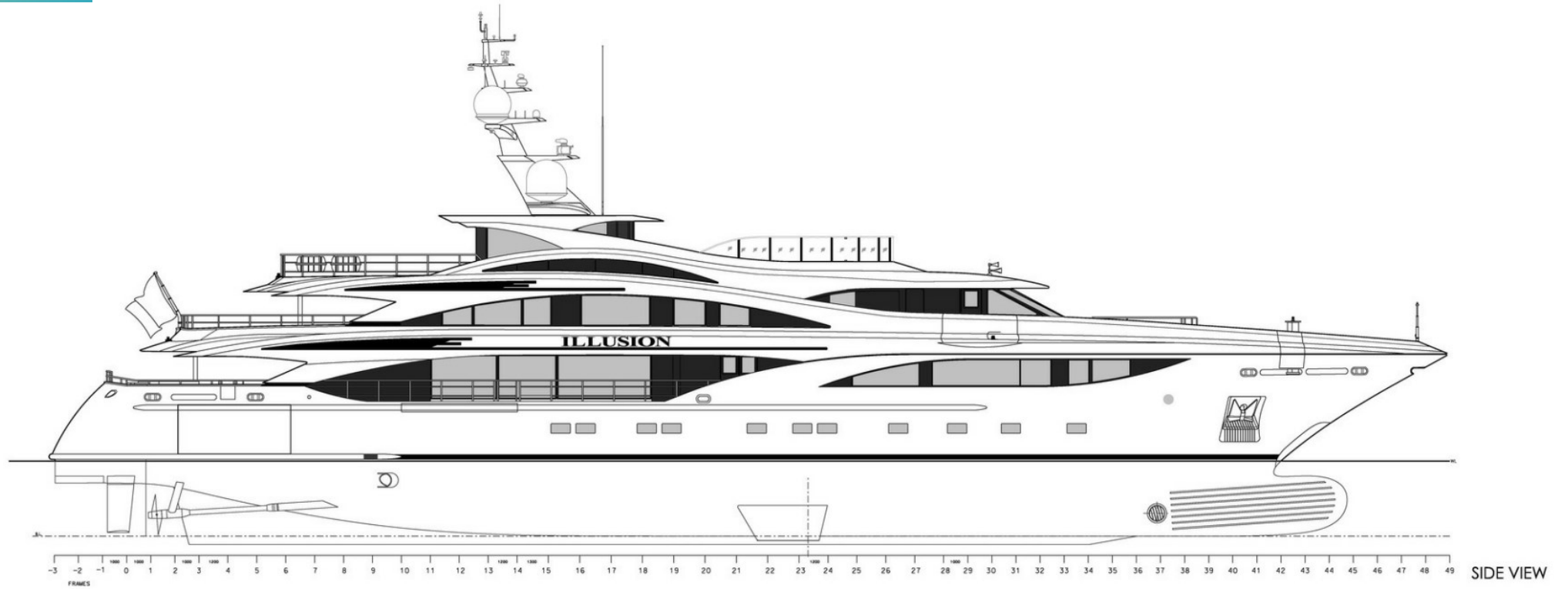


Yoga mats



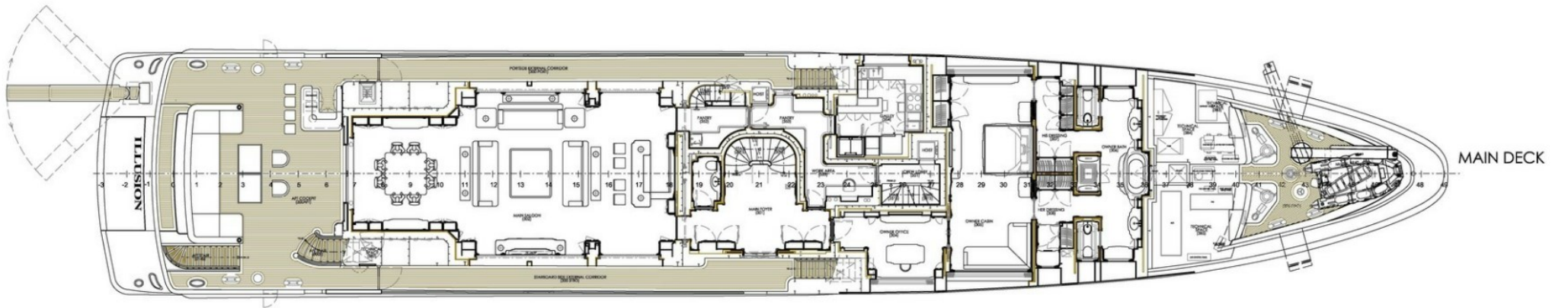
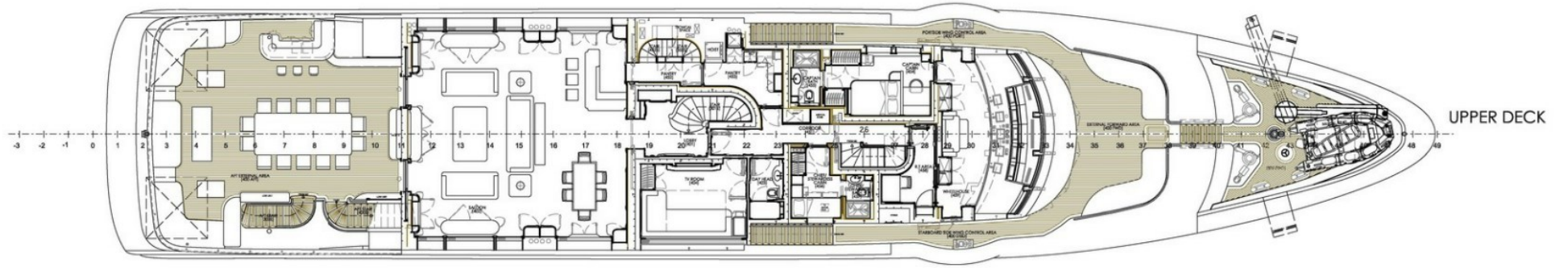
ILLUSION V

Profile and sun deck



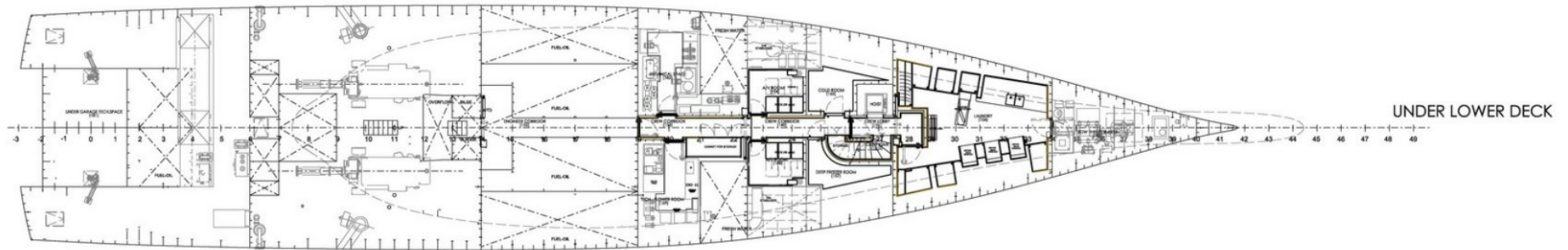
ILLUSION V

Upper and main decks



ILLUSION V

Lower and under lower decks



| | | | | | | | |
|-----------------|-------------|---|------------------------------|----------------|-------------|--|----|
| 05 | 22/07/2013 | General update (owner's request) | FA | | | | |
| 05 | 22/07/2013 | General update (owner's request) | | | | | |
| 04 | 26/02/2013 | General update (owner's request) | | | Composes | | |
| 03 | 16/10/2012 | General update (owner's request) | | | | | |
| 02 | 24/05/2012 | General update (owner's request) | FA | A.P. | Composes | | |
| 01 | 22/03/2012 | General update (based on Contractual G.A.) | A.P. | - | Composes | | |
| Agree/Disagree | Date/Date | Decision agreement / Update Decision | Drawn by | Checked by | Approved by | | |
| | | <small>Proprietario di ADMYT BENETTI S.p.A. Benetti S.p.A. è un'azienda a partecipazione paritetica. Il presente disegno non potrà essere utilizzato per la costruzione dell'oggetto senza autorizzazione scritta della Benetti S.p.A. e senza il consenso scritto del contraente. La società proprietaria è di proprietà a figure di legge. All proprietary rights reserved by ADMYT BENETTI S.p.A. This drawing shall not be reproduced, altered, copied or in any way utilized for the manufacture of the component or will be used without the written consent of Benetti S.p.A. and the written consent of the contractor. Any infringement will be legally pursued.</small> | | | | | A0 |
| | | 1:100 | Lloyd's Register of Shipping | Drawn by | M.G. | | |
| Design/Project: | | Motor Yacht 58 mt General arrangement Piano Generale | | Checked by | | | |
| | | | | Approved by | | | |
| | | | | Checked by | TEC-PRB | | |
| Contract/Code | Design/Code | Agreement/Code | Page/Sheet | File name | Scale | | |
| FB257 | 257-0101 | 05 | 1/1 | 257-0101-05-01 | 12/02/2010 | | |

BURGESS

WORLD CLASS. WORLD WIDE.

| | | | | | | | |
|-----------------------------------|-----------------------------------|------------------------------------|---------------------------------|-----------------------------------|---|--------------------------------------|---|
| London +44 20 7766 4300 | Monaco +377 97 97 81 21 | New York +1 212 223 0410 | Miami +1 305 672 0150 | Singapore +65 9665 8990 | Beverly Hills +1 310 424 5112 | Palma +34 971 495 413 | Athens +30 210 967 1661 |
| Dubai +971 4 425 5874 | Phuket +66 7623 9739 | Hong Kong +852 6496 2094 | Tokyo +81 46 738 8612 | Sydney +61 499 945 557 | Mumbai +91 98211 67253 | Shanghai +86 187 0898 6800 | Rio de Janeiro +55 21 2553-3238 |
| Aspen +1 970 710 2294 | | | | | | | |

Advertising of these vessel(s) in printed publications, on the internet or in any other medium is not permitted without prior written permission from Burgess. All particulars are given in good faith and are believed correct but they cannot be guaranteed.

Last updated: 21 January 2025