

ICE BEAR



ICE BEAR

SPÉCIFICATIONS.



Prix demandé
USD 9 950 000



Chantier
1988, Feadship, De Vries, The Netherlands



Longueur
52m



Largeur
9,3m



Tirant d'eau
3,1m



Tonnage brut
614



Vitesse de croisière
13 knots



Vitesse maximale
15 knots



Autonomie
4 850 nm



Pavillon
Cayman Islands



Position
USA



Designer extérieur
De Voogt



Designer d'intérieur
Paola D. Smith



Construction
Hull - Steel, Superstructure - Aluminium, Deck - Teak



Équipage
11



Invités
10



Cabines
5 (3 x double, 2 x twin)



Moteurs
2 x 1 175hp Caterpillar



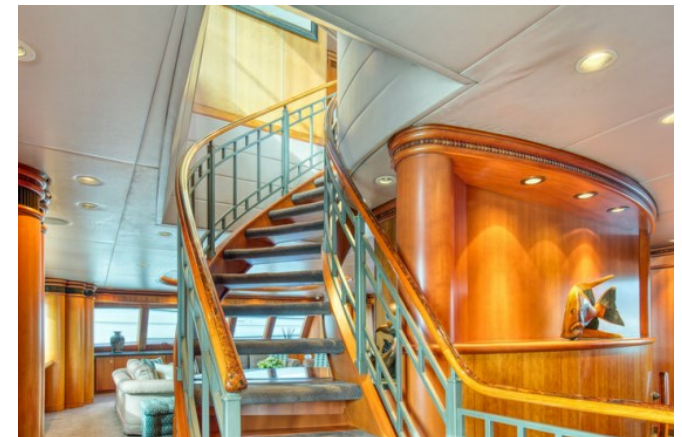
Propulsion
Twin screw diesel yacht

Note

Not available for sale to US residents while in US waters.

[Voir le yacht sur le site](#)

[Regarder la vidéo du yacht](#)



ICE BEAR

Exterior



Bridge deck lounge



Bridge deck foyer



Observation lounge



ICE BEAR

Observation lounge



Main deck foyer



Main deck dining



Master cabin office



ICE BEAR

Master cabin office



Master cabin



Master cabin



Master cabin en suite



ICE BEAR

Master cabin en suite



Lower deck foyer



Guest cabin



Guest cabin en suite



ICE BEAR

Guest cabin



Guest cabin en suite



Guest cabin



Guest cabin en suite



ICE BEAR

Bridge



Galley



Galley / stew pantry



Engine room



ICE BEAR

Main deck aft



Main deck aft



Cockpit



Crows nest



ICE BEAR

Bridge deck aft



Foredeck



Tender garage



Tender garage



ICE BEAR

Exterior



Exterior



At anchor



BURGESS

Discover the difference.
burgessyachts.com



ICE BEAR

APERÇU.

The 52m (170.6ft) yacht ICE BEAR was delivered in 1988 by the distinguished Dutch shipyard, Feadship De Vries, with exterior styling by De Voogt. At 614 gross tonnes, with a beam of 9.3m (30.5ft), the yacht offers plenty of spacious lounges and communal areas for guests to relax and enjoy quality time at sea.

There are 5 cabins on board which sleep a total of 10 guests. The master suite on the main deck is full beam and features a private study, his and hers en suite bathrooms, a walk-in wardrobe, and large windows providing plenty of light. The four remaining cabins on the lower deck have colourful themes, and are spacious with seating areas and en suite bathrooms.

Guests can enjoy relaxing while underway in the sky lounge, or gathering for a meal in the main saloon where they will find a soothing neutral colour pallet balanced by large windows for an airy feel. An observation lounge is also located on the upper deck, where guests can congregate over cocktails and take in the views after a long day on the water. The exterior main deck offers two fixed fishing chairs, a range of seating, and a crows nest with outdoor helm station.

Fitted with two 1,175hp Caterpillar engines ICE BEAR offers complete comfort at sea while reaching speeds up to 15 knots, and 13 knots cruising. She is also trans-Atlantic with a range of 4,850 nautical miles.

Principales caractéristiques

Professionally maintained by full time crew

Private usage only, never chartered

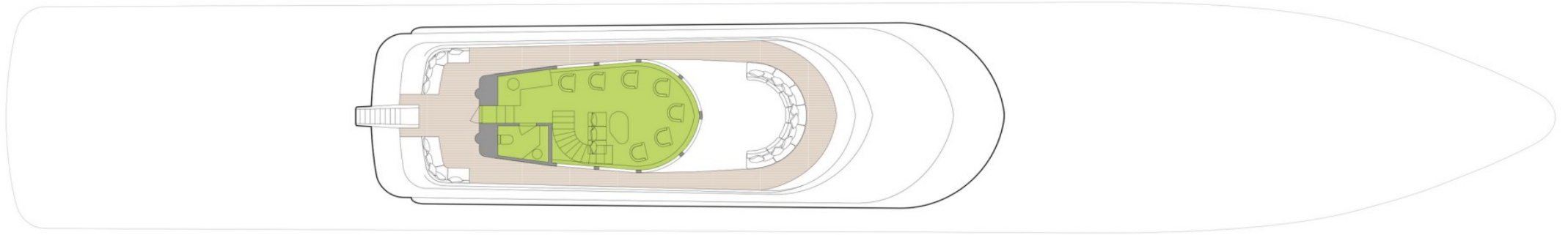
Recent ABS inspection completed

Vintage Feadship details and timeless design

Annexes

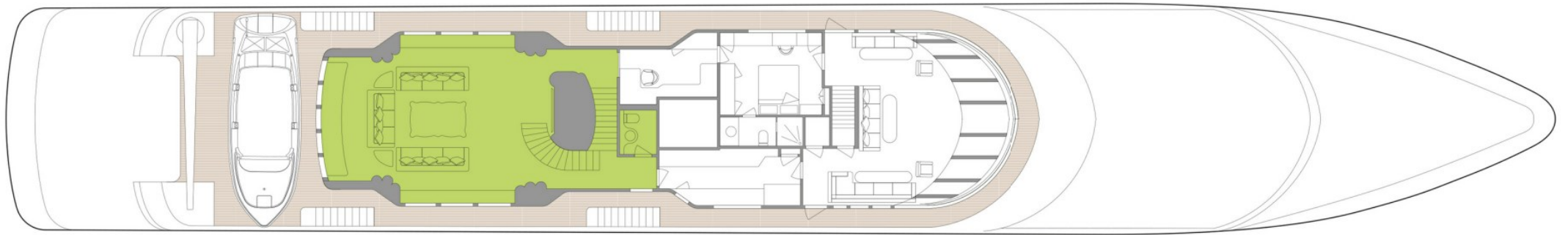
28ft Shamrock sportfisher, 18ft RIB

SKY LOUNGE



 GUEST AREAS  MASTER SUITE  GUEST CABINS

BRIDGE DECK



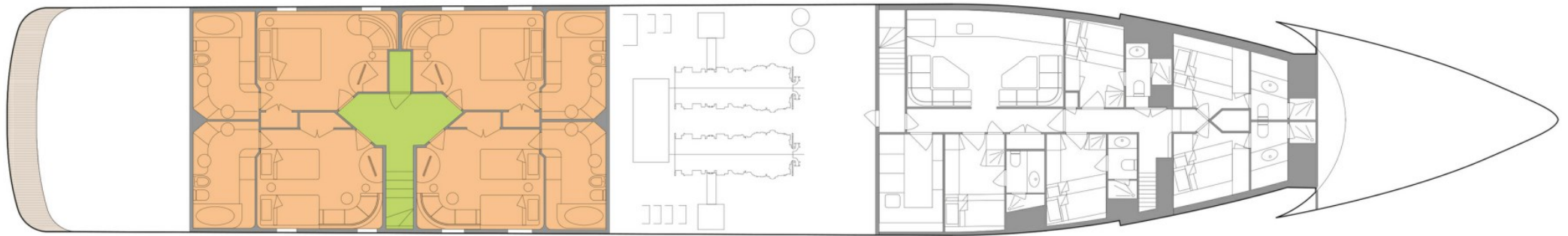
■ GUEST AREAS ■ MASTER SUITE ■ GUEST CABINS

MAIN DECK



■ GUEST AREAS ■ MASTER SUITE ■ GUEST CABINS

LOWER DECK



 GUEST AREAS  MASTER SUITE  GUEST CABINS

BURGESS

WORLD CLASS. WORLD WIDE.

London +44 20 7766 4300	Monaco +377 97 97 81 21	New York +1 212 223 0410	Miami +1 305 672 0150	Singapore +65 9665 8990	Beverly Hills +1 310 424 5112	Palma +34 971 495 413	Athens +30 210 967 1661
Dubai +971 4 425 5874	Phuket +66 7623 9739	Hong Kong +852 6496 2094	Tokyo +81 46 738 8612	Sydney +61 499 945 557	Mumbai +91 98211 67253	Shanghai +86 187 0898 6800	

La publicité de ce(s) navire(s) dans des publications imprimées, sur Internet ou sur tout autre support n'est pas autorisée sans l'autorisation écrite préalable de Burgess.
Toutes les informations sont données de bonne foi et sont considérées comme exactes, mais elles ne peuvent être garanties.

Dernière mise à jour : 15 avril 2024