

HOME



SPÉCIFICATIONS.



Prix demandé
EUR 29 500 000



Chantier
2017, Heesen, The Netherlands



Longueur
49,8m



Largeur
9m



Tirant d'eau
2,1m



Tonnage brut
499



Vitesse de croisière
13 knots



Vitesse maximale
16 knots



Autonomie
3 000 nm



Pavillon
Marshall Islands



Position
Caribbean



Classe
ABS + A1 Commercial Yachting Service+ AMS



Designer extérieur
Omega Architects



Designer d'intérieur
Cristiano Gatto Design



Construction
Hull - Aluminium, Superstructure - Aluminium



Équipage
10



Invités
12



Cabines
6 (4 × double, 1 × double/twin, 1 × twin)



Moteurs
2 × 805hp MTU



Propulsion
Hybrid

[Voir le yacht sur le site](#)

[Regarder la vidéo du yacht](#)





Main deck lounge



Main deck lounge



Main deck dining



HOME

Main deck dining



Master cabin



Double cabin



Double cabin



HOME

Double cabin en suite bathroom



Double cabin



Twin cabin



Sky lounge



HOME

Sky lounge



Sky lounge



Main deck aft lounge



Bridge deck aft dining



BURGESS

Discover the difference.
burgessyachts.com



HOME

Bridge deck aft dining



Sun deck bar and lounge



Sun deck bar



Sun deck Jacuzzi



HOME

Swim platform



Water toys



BURGESS

Discover the difference.
burgessyachts.com



APERÇU.

The 49m (160.7ft) HOME was built in full aluminium to ABS classification and delivered by Dutch shipyard Heesen in 2017. She is the first yacht to combine Van Oossanen's super-efficient FDHF hull design with hybrid propulsion, reducing fuel costs, emissions, noise and vibration. With a beam of 9m (29.5ft) and interior volume of 499GT, she is a popular charter yacht but would suit private use well.

HOME blends Northern European credentials with Italian style. Her exteriors are by Omega Architects and her minimalist Ibiza style interiors are by Cristiano Gatto, who has created spaces that blur the distinction between inside and out. Use of extensive floor to ceiling glass and interior teak decking in the sky lounge create a genuine beach club feel.

A large sun deck has sun loungers forward with privacy glass safety screens. Beneath the hardtop is a large sit-up bar to port and a lounge area to starboard, which could convert into a dining area. Aft is a jacuzzi. The upper deck aft has open air dining shaded by the overhang and a sun lounge aft, and walkaround sidedecks lead to the foredeck. The main deck aft has L-shaped banquettes port and starboard around coffee tables and a central staircase leads down to a huge swim platform that doubles as a sea level sun lounge. Behind a door, steps lead to an air conditioned gym and dayhead.

Her sky lounge has bean bags, daybeds and a bar with light cascading through huge windows onto the teak decking. The main saloon has dark hardwood flooring with a relaxed lounge aft and a formal dining area forward, both with fabulous light and views, a media lounge without full height windows.

The full beam main deck owner's suite also features full height windows for incredible views and natural light at anchor. The suite has a dressing room, en suite with shower, and a private office. On the lower deck a full beam VIP cabin, two double cabins and two twin cabins complete family friendly accommodation for 12 guests in six cabins. She also sleep up to 10 crew.

Twin 805hp MTU main diesel engines, two generators and two e-motors combine to give her four propulsion modes: from 'hybrid', where generators alone drive e-motors up to nine knots, to 'boost' for a top speed of 16.8 knots. Tenders and toys are stowed on the foredeck with a deck crane for launch. She has a maximum range of 2,760nm and Naiad zero speed stabilisers provide comfort at anchor on arrival.

Principales caractéristiques

Cutting-edge Oossanen exterior styling with eye-catching vertical bow

Heesen's first Hybrid propulsion system yacht with reduced vibration, less noise, efficient fuel & energy consumption

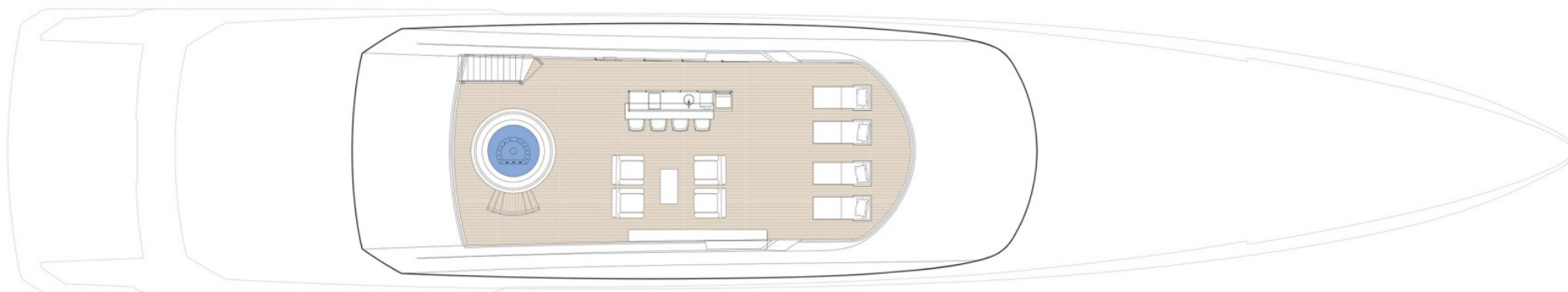
Northern-European pedigree

Contemporary sophisticated Cristiano Gatto interior with clean lines and edgy design

Annexes

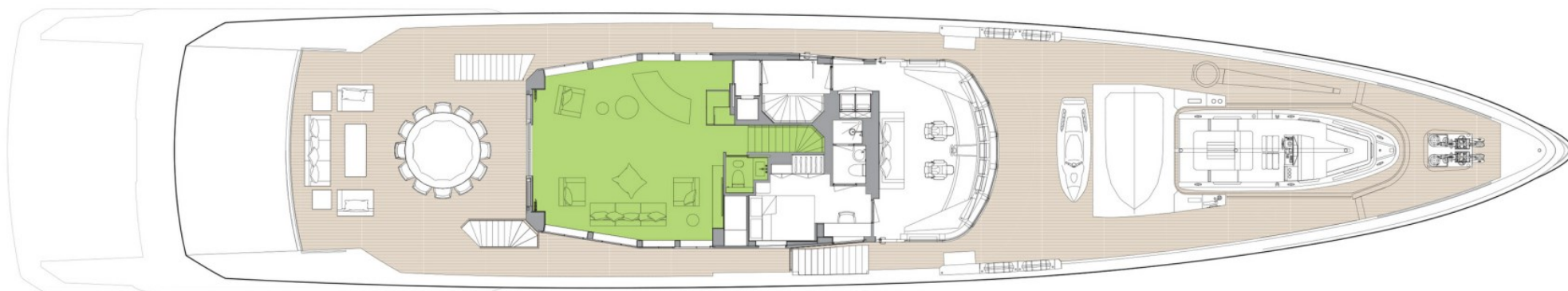
10.4m Jupiter tow tender (12 man), 6.3m Castoldi Jet Tender 21 (12 man), 3.4m Zodiac rescue tender

SUN DECK



 GUEST AREAS  OWNER'S SUITE  VIP SUITE  GUEST CABINS  GYM  OWNER'S OFFICE  SAUNA  JACUZZI

WHEELHOUSE DECK



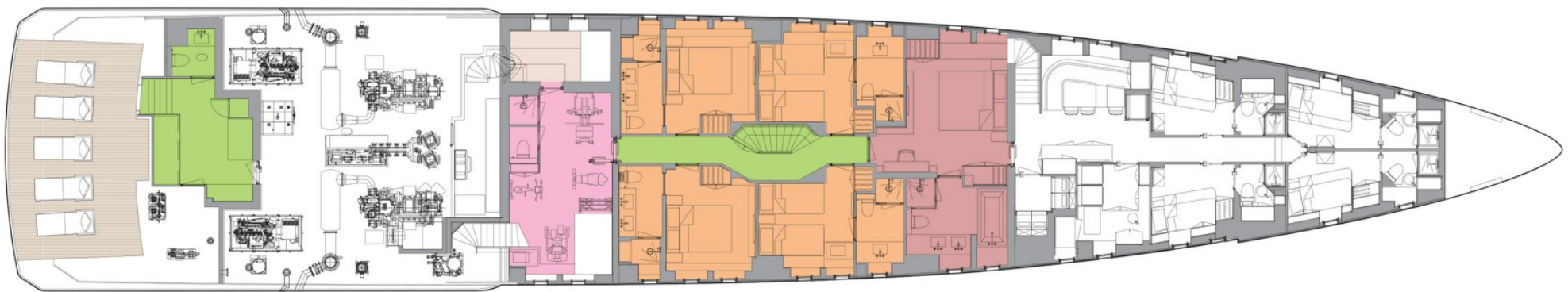
GUEST AREAS OWNER'S SUITE VIP SUITE GUEST CABINS GYM OWNER'S OFFICE SAUNA JACUZZI

MAIN DECK



GUEST AREAS OWNER'S SUITE VIP SUITE GUEST CABINS GYM OWNER'S OFFICE SAUNA JACUZZI

LOWER DECK



GUEST AREAS OWNER'S SUITE VIP SUITE GUEST CABINS GYM OWNER'S OFFICE SAUNA JACUZZI

BURGESS

WORLD CLASS. WORLD WIDE.

London +44 20 7766 4300	Monaco +377 97 97 81 21	New York +1 212 223 0410	Miami +1 305 672 0150	Singapore +65 9665 8990	Beverly Hills +1 310 424 5112	Palma +34 971 495 413	Athens +30 210 967 1661
	Dubai +971 4 425 5874	Phuket +66 7623 9739	Hong Kong +852 6496 2094	Tokyo +81 46 738 8612	Sydney +61 499 945 557	Mumbai +91 98211 67253	

La publicité de ce(s) navire(s) dans des publications imprimées, sur Internet ou sur tout autre support n'est pas autorisée sans l'autorisation écrite préalable de Burgess.
Toutes les informations sont données de bonne foi et sont considérées comme exactes, mais elles ne peuvent être garanties.

Dernière mise à jour : 01 mars 2024