

HEESEN 47



HEESEN 47

SPECIFICATIONS.



Prix demandé
USD 25 000 000



Chantier
2017 (refurbished 2023), Heesen, The Netherlands



Longueur
46,7m



Largeur
8,5m



Tirant d'eau
2,6m



Tonnage brut
499



Vitesse de croisière
14 knots



Vitesse maximale
17 knots



Autonomie
4 500 nm



Pavillon
Cayman Islands



Position
Asia



Classe
Lloyd's Register (LR) 100A1 SSC YACHT MONO G6 LMC LY3



Designer extérieur
Omega Architects



Designer d'intérieur
Bannenberg & Rowell Design



Construction
Hull - Steel, Superstructure - Aluminium, Deck - Teak



Équipage
9



Invités
11



Cabines
5 (3 × double, 2 × twin, 1 × additional berth)



Moteurs
2 × 1 340hp MTU



Propulsion
Twin screw diesel yacht

[Voir le yacht sur le site](#)



HEESEN 47



BURGESS

Discover the difference.
burgessyachts.com



HEESEN 47



BURGESS

Discover the difference.
burgessyachts.com



HEESEN 47



BURGESS

Discover the difference.
burgessyachts.com



HEESEN 47



BURGESS

Discover the difference.
burgessyachts.com



HEESEN 47



BURGESS

Discover the difference.
burgessyachts.com



HEESEN 47



BURGESS

Discover the difference.
burgessyachts.com



HEESEN 47

APERÇU.

This striking, individual yacht is the latest of the restyled 47-metre Heesen series designed by Frank Laupman at Omega Architects. Built in 2017 and refurbished in 2023, her well-engineered displacement steel hull with bulbous bow provides smooth and safe cruising in all sea conditions, while her classic-contemporary 499GT design delivers finesse and sophistication inside and out. As part of the recent works, HEESEN 47 completed her Lloyd's five-year special survey so is in pristine condition and ready for a new owner.

The 47-metre series is known for its outdoor spaces, devoting almost 185 square metres to exterior decks. Her's cosy bow seating area is the owners' preferred place for sunsets, cigars, and Mediterranean vistas, but the pièce de résistance is the sprawling sun deck. Taking up 83 square metres, it features a spa pool forward surrounded by sunpads, loose lounging chairs, a bar to port, and a large seating area aft. Versatile in nature, the sundeck has proven to be the ideal spot to host parties, friends and family.

HEESEN 47 boasts a highly optimised interior layout that intelligently uses every element of space on board. Elegantly decorated, a key feature is the expanse of glazing that lightens and opens up the space. During the recent refurbishments, the interiors were freshened and are now bright, airy, and inviting.

Principales caractéristiques

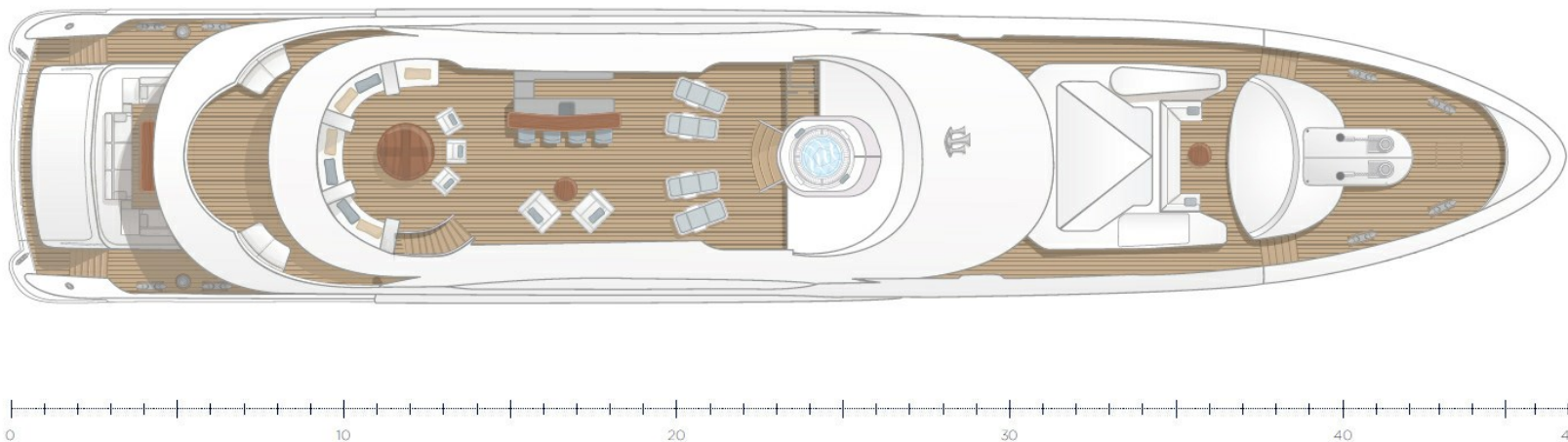
47 metre steel displacement with Bannenberg and Rowell interior design

Full-displacement hull with proven Trans-Atlantic range

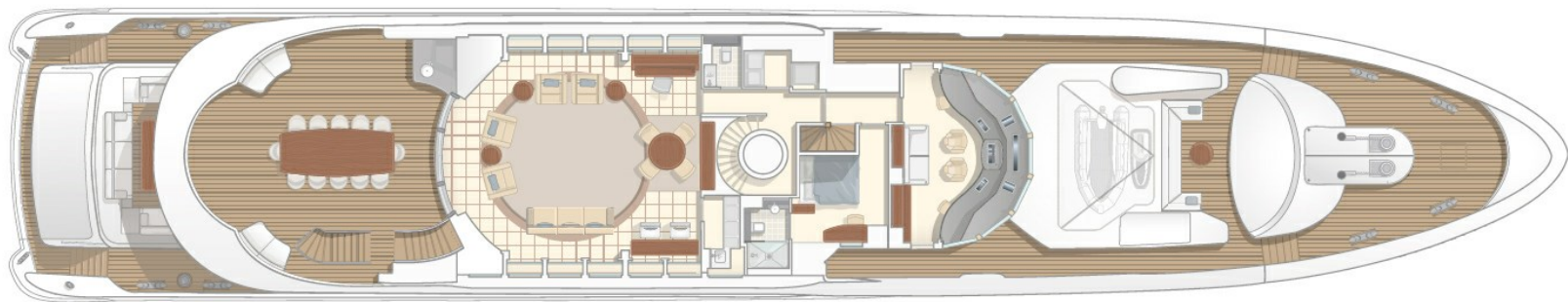
Maintained to Lloyd's Class and LY3 compliant

Just under 500 gross tonnage, she accommodates 10/12 guests in 5 staterooms

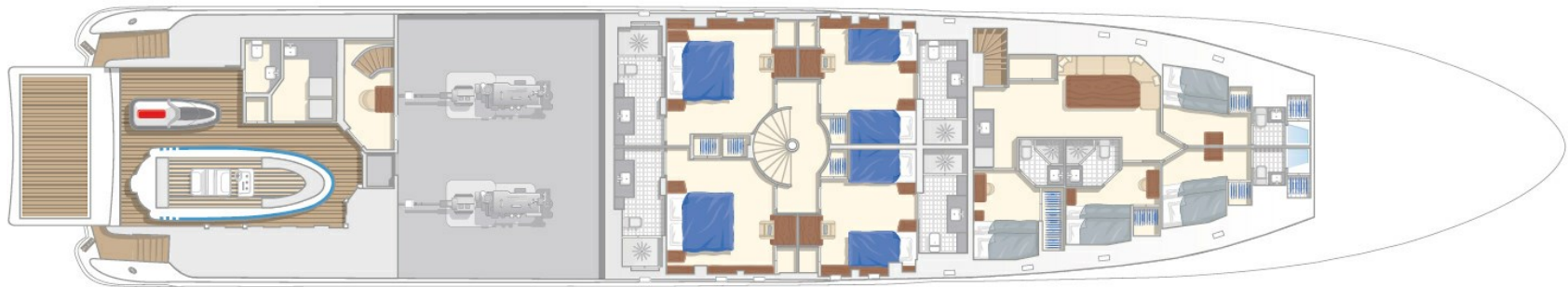
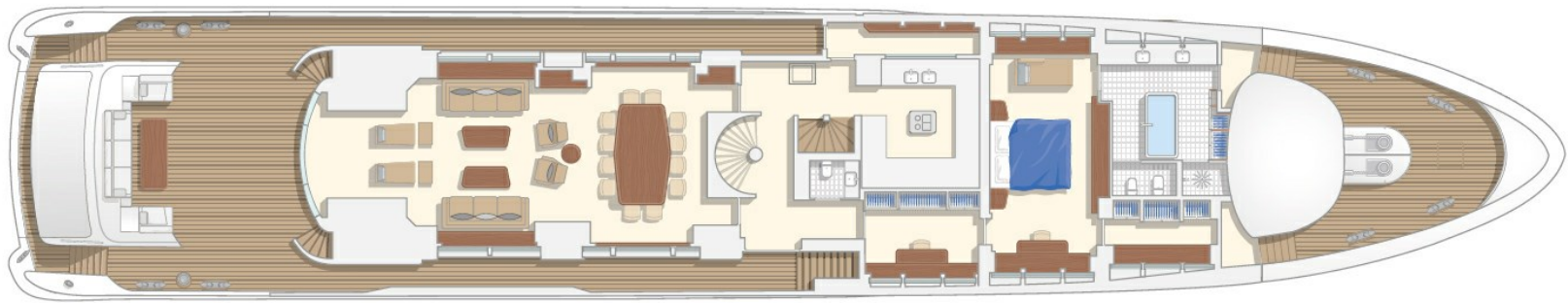
SUN DECK



UPPER DECK



MAIN DECK



LOWER DECK

BURGESS

WORLD CLASS. WORLD WIDE.

London +44 20 7766 4300	Monaco +377 97 97 81 21	New York +1 212 223 0410	Miami +1 305 672 0150	Singapore +65 9665 8990	Beverly Hills +1 310 424 5112	Palma +34 971 495 413	Athens +30 210 967 1661
Dubai +971 4 425 5874	Phuket +66 7623 9739	Hong Kong +852 6496 2094	Tokyo +81 46 738 8612	Sydney +61 499 945 557	Mumbai +91 98211 67253	Shanghai +86 159 0162 1898	Rio de Janeiro +55 21 2553-3238
Aspen +1 970 710 2294							

La publicité de ce(s) navire(s) dans des publications imprimées, sur Internet ou sur tout autre support n'est pas autorisée sans l'autorisation écrite préalable de Burgess.
Toutes les informations sont données de bonne foi et sont considérées comme exactes, mais elles ne peuvent être garanties.

Dernière mise à jour : 21 mai 2025